

17.7 Milestone integration



For video streaming with Milestone XProtect, Milestone SDK Runtime must be installed.



For streaming video from Milestone, you must install the Milestone SDK Redistributable 3.4 or later on each FFT CAMS Client machine that will stream video from Milestone.

The Milestone integration allows FFT CAMS 3 to trigger *manual events* defined in a Milestone XProtect system when zone alarms occur.

The Milestone integration uses two-way communication between FFT CAMS 3 and Milestone. Milestone and the devices it controls must be configured first.

- 1 Click **Connect** to connect to Milestone. The Milestone Configuration dialog box will close while FFT CAMS 3 establishes a connection to Milestone.

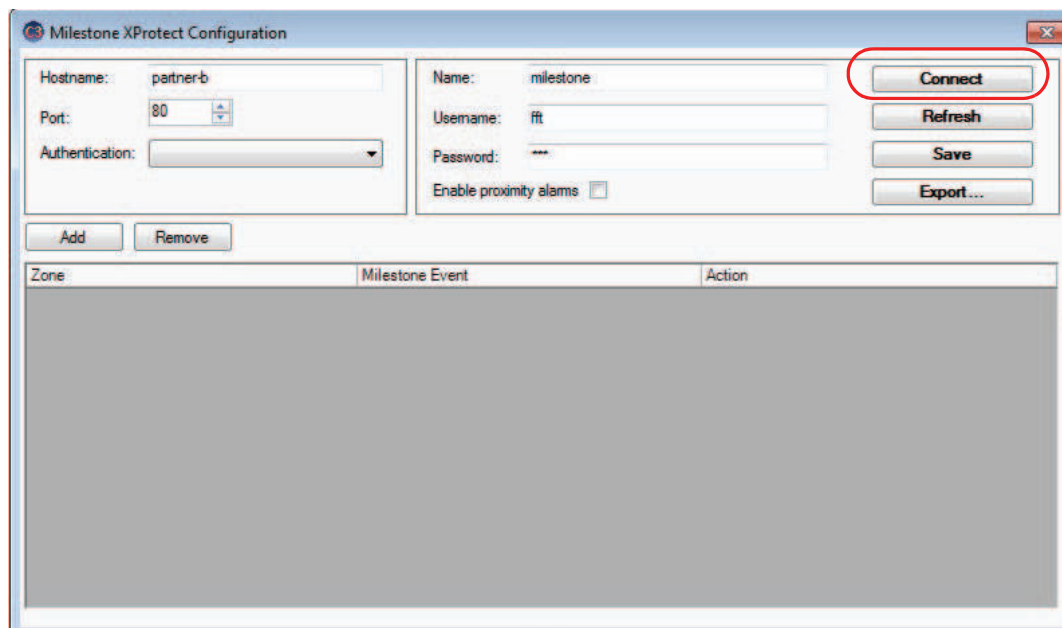


Figure 17-8 Milestone configuration window

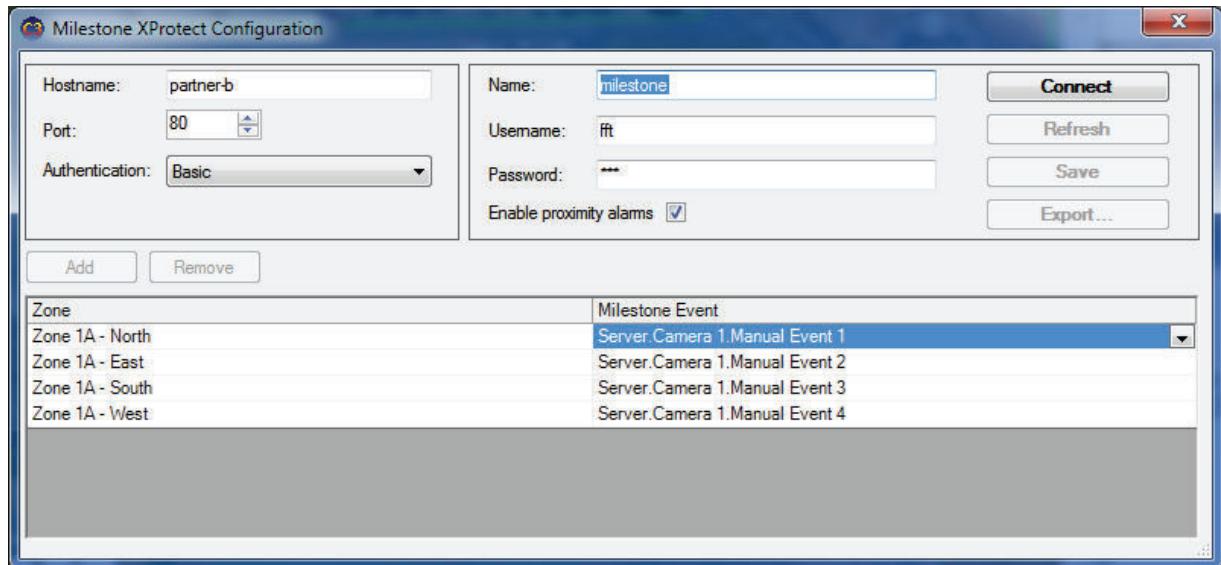


Figure 17-9 Milestone XProtect Configuration settings

- 1 Choose Milestone from the list of available integrations.
- 2 Enter the required settings.

Table 17-6 Milestone integrations settings

Setting	Description
Hostname	The host name of the Milestone XProtect server.
Port	The port the Milestone XProtect Server listens for requests on.
Authentication	One of [Basic , Windows , Windows Default]. This depends on the type of user-defined connectivity in Milestone. The current default authentication method in Milestone XProtect is Windows .
Name	The name of the Milestone integration as it will appear in Edit Mode.
Username	The user name of the Milestone account. For the Windows authentication method, the following formats are accepted: <user_name> <machine_name>\<user_name> but not <user_name>@<machine_name>.
Password	The password of the account created in the Milestone XProtect server.
Enable proximity alarms	If enabled, when the intrusion occurs near the border of two zones, a Milestone Event for both zones will be triggered.
Connect	Connects FFT CAMS 3 to the Milestone system so that FFT CAMS 3 can retrieve the list of Milestone Events.

Table 17-6 Milestone integrations settings (cont.)

Setting	Description
Refresh	If Milestone Events are added or removed while you are configuring FFT CAMS 3, click Refresh to obtain the updated list of Milestone events.
Save	Saves your settings to the FFT CAMS 3 server.
Export	Exports the Milestone integration configuration settings to a .csv file.

- 3 Click the Connect button. The Milestone form will close and after a few seconds you will see the following message.

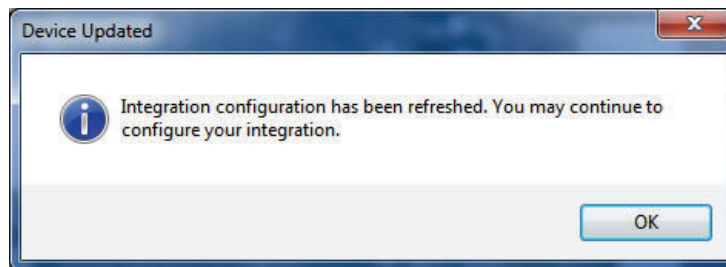


Figure 17-10 Milestone confirmation message

You can now re-enter the Milestone configuration dialog.

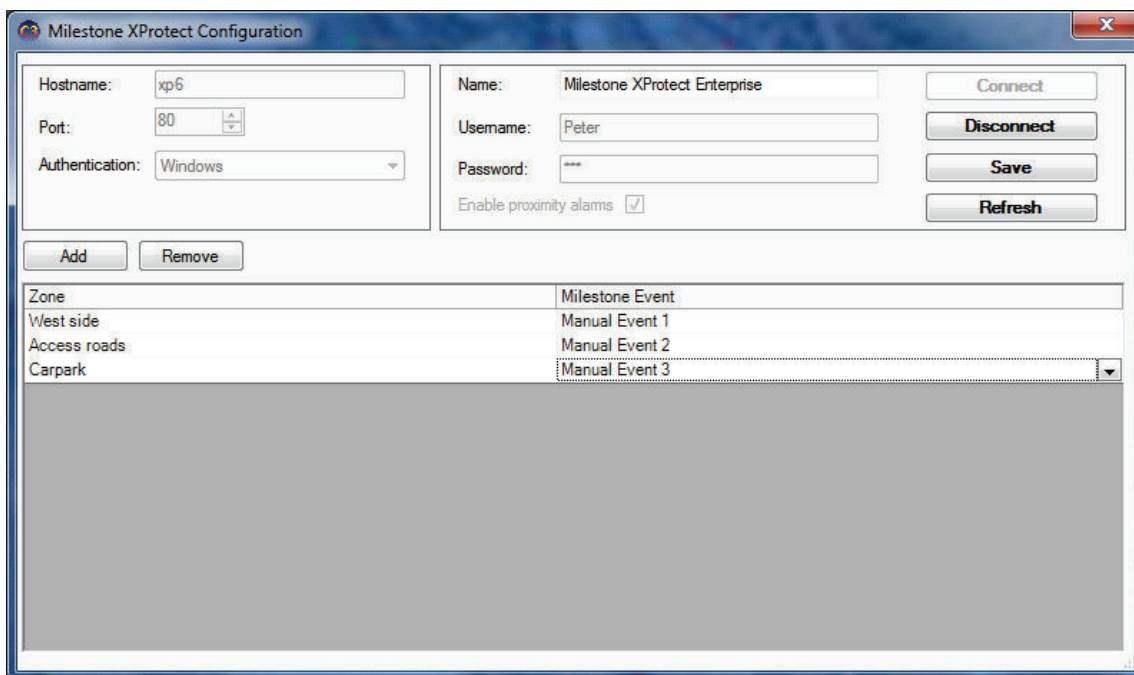


Figure 17-11 Connected to Milestone

You can now use the Add and Remove buttons to add entries. Each entry assigns an FFT CAMS 3 zone to a Milestone event. Milestone events are configured (in the Milestone software) to move cameras etc.

- 4 Click **Save** to save your settings to the FFT CAMS 3 Server.
- 5 If you need to update any of the connection parameters in the Configuration dialog, such as the Username and Password, click **Disconnect**. You will then be able to modify the parameters and reconnect with the new parameters using the **Connect** button.
- 6 If Milestone is reconfigured while you are modifying the Milestone XProtect Configuration dialog, click **Refresh** and an updated list of Milestone Events will be retrieved.
- 7 Click the **Add** button to add entries to the table.
- 8 Select a **Zone** from the new table entry then select a Milestone Event you wish to assign to that zone.
- 9 Click **Save** to save your modifications. This will close the form.

In this example, a zone alarm in **Zone 1A - North** will trigger the **Server.Camera 1.Manual Event 1** event on the Milestone XProtect server.

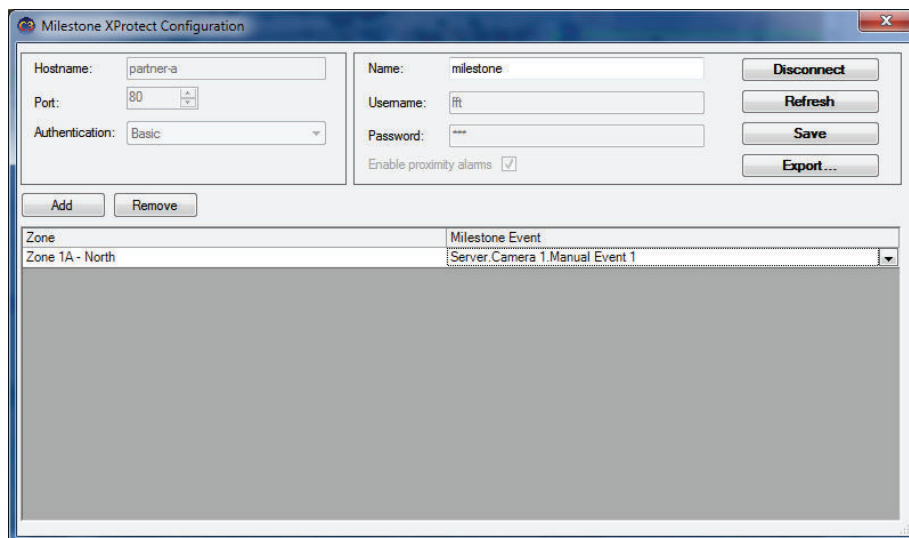


Figure 17-12 Connected Milestone integration



If the Milestone system has been reconfigured since the last modification to the Milestone integration in FFT CAMS, click the **Refresh** button. This closes the window while FFT CAMS retrieves an updated list of events from Milestone.

Exporting Milestone event data

The Export button creates a CSV file with the following applicable fields.

Table 17-7 Fields in exported csv file

Field	Description
Input/Output	Will always be Output .
Zone ID	Zone ID.
Zone Name	The name of the zone.
Milestone Manual Event ID	The ID of the Milestone event.
Milestone Manual Event Name	The name of the Milestone event.
Action	Will be one of Zone Alarm or Zone Alarm Cleared .