

maxlogic



ML-1636.3

**Maxlogic SPRVSR+ Plug-In
Graphical Monitoring Software,
XProtect Integration**

CONTENTS

- 1. INTRODUCTION..... 3
- 2. INSTALLATION OF THE SOFTWARE..... 3
 - 2.1. Installation..... 3
 - 2.2. Running the XProtect Smart Client Application..... 5
- 3. PROGRAM USAGE..... 9
 - 3.1. Program Areas..... 9
 - 3.2 Access to Event Logs Information..... 9
 - 3.3 Access to Map and Device Information..... 10
 - 3.4 Fire Situation and Remote Control Operations..... 11
- 4. RELATED PRODUCTS..... 12

1. INTRODUCTION

Maxlogic SPRVSR + Plug-In graphical monitoring software, Xprotect Integration; It enables the transmission of fire events from Maxlogic addressable fire alarm control panels to the XProtect software, and live images can be obtained from the ip cameras assigned to the device where the alarm is received.

With Maxlogic Sprvsr + Plug-In software, fire detection and fire alarm devices can be displayed graphically on the floor plan, and detailed map and device information of the location can be accessed. In addition, instant response to fire events can be provided by sending Alarm, Silence Alarm, Silence Buzzer, Reset commands.

Manufacturer Firms' Title, Address Details

Manufacturer Firm: MAVİLİ ELEKTRONİK TİCARET VE SANAYİ A.Ş.

Address: ŞERİFALİ MAHALLESİ, KUTUP SOKAK NO: 27/1-2-4 ÜMRANİYE / İSTANBUL

TEL: 0 216 466 45 05 **FAX:** 0 216 466 45 10

Web: www.mavili.com.tr

Authorized Service Title, Address Details

Authorized Service: TEKSİS TEKNİK ELEKTRONİK SİS. TİC. VE SAN. A.Ş.

Address: ŞERİFALİ MAHALLESİ, KUTUP SOKAK NO: 27/3 ÜMRANİYE / İSTANBUL

TEL: 0 216 313 60 60 **FAX:** 0 216 313 47 49

E-mail: destek@mavili.com.tr



Disposal of Packagings

Packaging materials consist of recyclable materials. For providing recycling, please dispose waste packagings to collecting points of authorized recycling facilities.

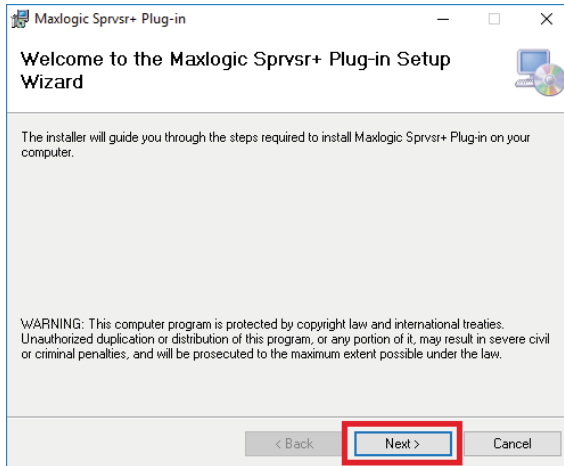
Disposal of E-Waste:

This device is in conformity with WEEE Directive and consists of recyclable materials. This product should not be disposed with general waste for preventing negative effects on environment and human health. This product should be disposed to collecting points of authorized recycling facilities. Further information can be reached from authorized unit.

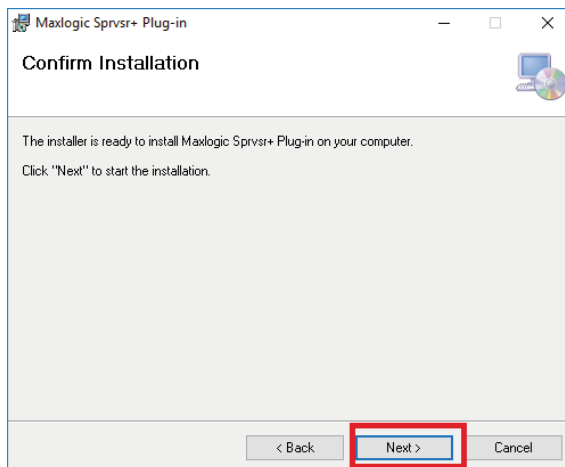
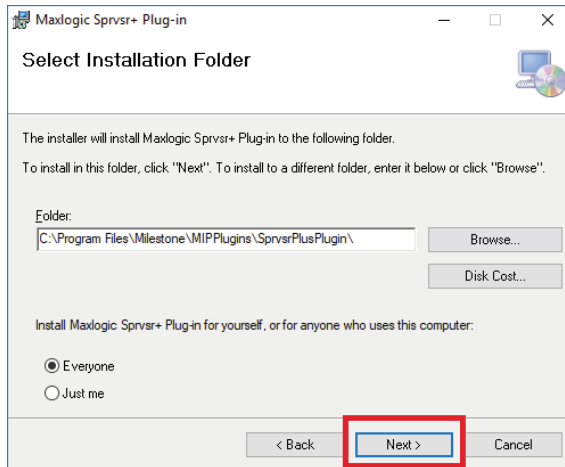
2. INSTALLATION OF THE SOFTWARE

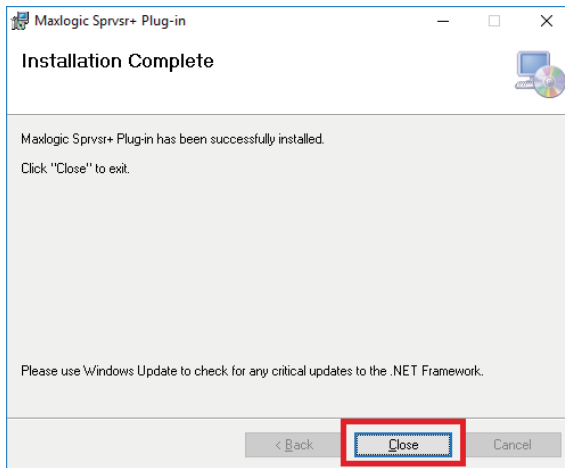
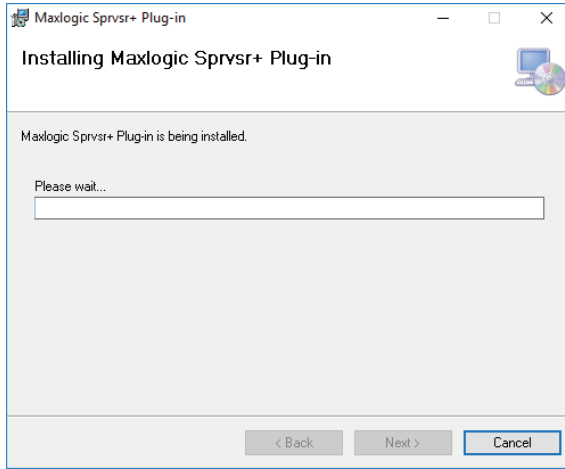
2.1. Installation

a. The setup.exe file is run with the "Run as administrator" option by right clicking and the "Next" button is clicked.



Select the directory where the Sprvsr + Plug-in application will be installed. The default directory is "**C:\Program Files\Milestone\MIPPlugins\SprvsrPlusPlugin**" in the installation. Milestone application will be installed in this directory unless otherwise specified during the installation phase. But; In case of installing it to a different directory, the relevant directory should be checked and the directory should be confirmed to end with "**..\Milestone\ MIPPlugins\SprvsrPlusPlugin**". Otherwise, the Sprvsr + Plug-in application will not work in the XProtect framework software. The installation is continued by clicking the "Next" button.



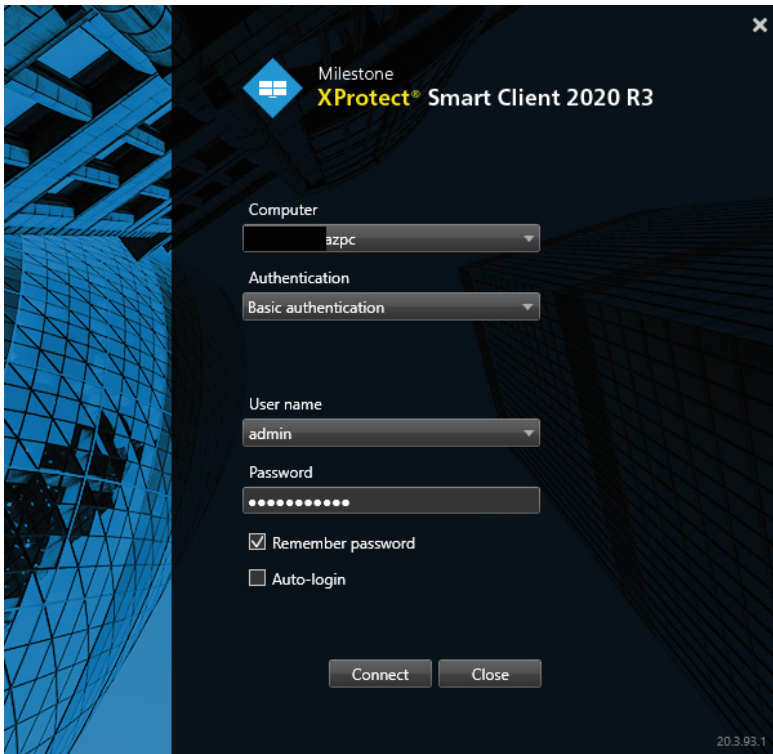


2.2 Running the XProtect Smart Client Application

The USB Dongle prepared for the Sprvsr + Plug-in application is plugged into the computer.

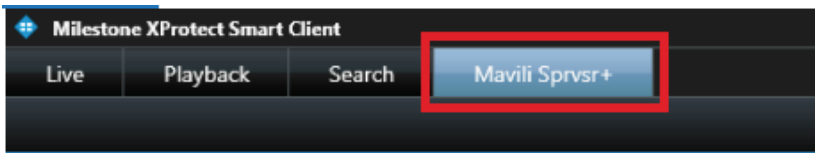


The XProtect Smart Client application is launched.

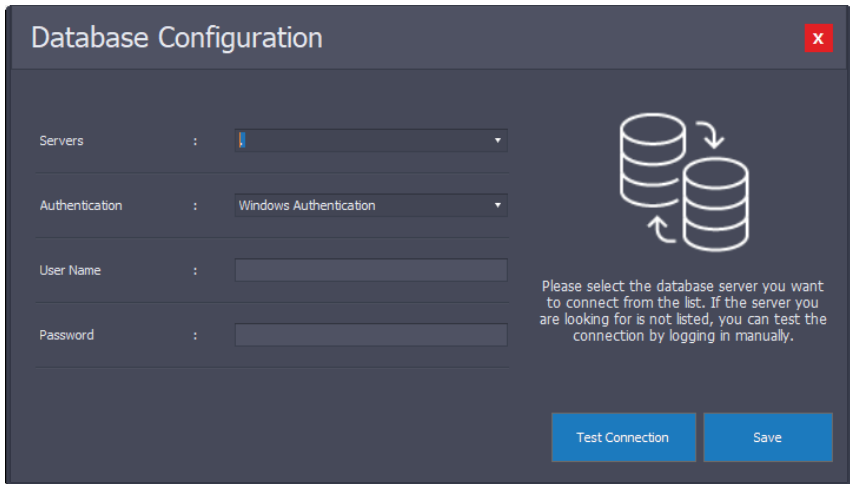


If there is no error during the installation, it should be seen that there is a tab named "Mavili Sprvsr +" in the framework software tabs. If the "Mavili Sprvsr +" tab is not visible, it means there is an error in the installation and the installation directory should be checked.

The "Mavili Sprvsr +" tab is clicked.



The database configuration window where the Sprvsr + Plug-in application will run is displayed. After entering the database configuration settings, click on the "Save" button.



The image shows a 'Database Configuration' window with a dark theme. It has a title bar with a close button (X). The window contains four input fields: 'Servers' (a dropdown menu), 'Authentication' (a dropdown menu set to 'Windows Authentication'), 'User Name' (a text box), and 'Password' (a text box). To the right of these fields is an icon of two database cylinders with arrows indicating a cycle. Below the icon is a text message: 'Please select the database server you want to connect from the list. If the server you are looking for is not listed, you can test the connection by logging in manually.' At the bottom right, there are two buttons: 'Test Connection' and 'Save'.

Database Configuration

Servers :

Authentication :

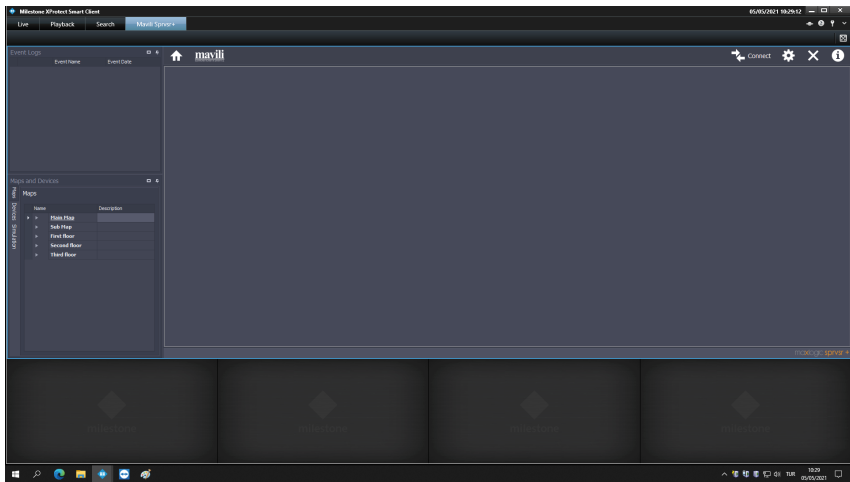
User Name :

Password :

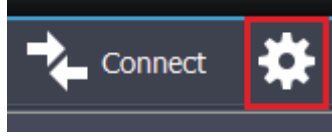
Please select the database server you want to connect from the list. If the server you are looking for is not listed, you can test the connection by logging in manually.

Test Connection Save

After entering the database configuration information, it should be seen that the Sprvsr + Plug-in application is opened.



By clicking on the gear icon in the upper-right corner, "SVController Connection Settings" is selected.



The IP address of the computer where the Sprvrs + application is running is entered.

SVController Connection Settings

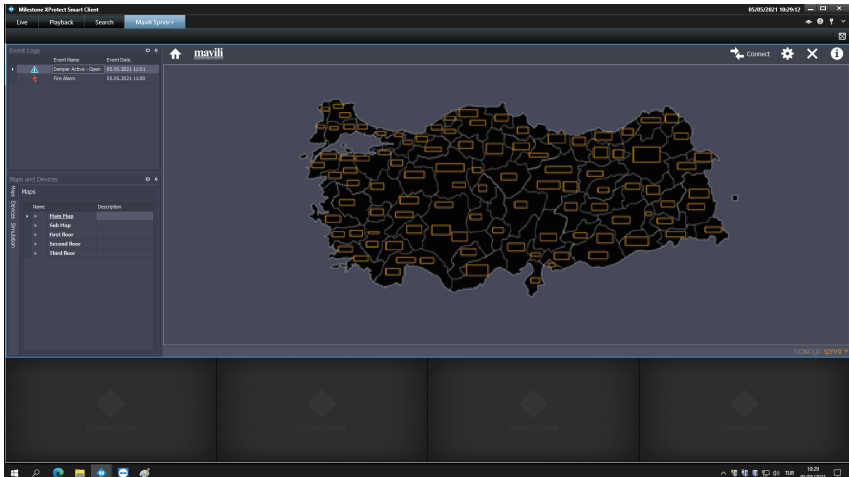
IP Address : 192.168.94.30

Send Port : 6061

Receive port : 6060

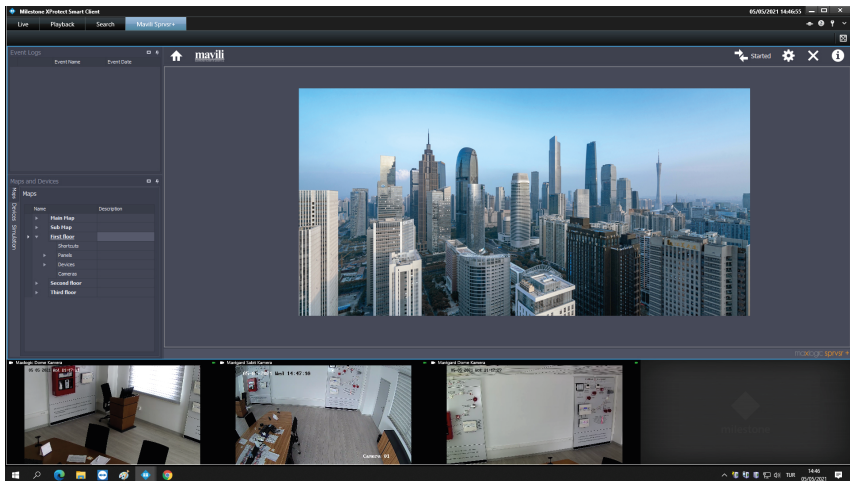
Save

The map and network list to be displayed by the Sprvrs + Plug-in application is selected from the "Client Authorization" settings in the Sprvrs + Admin module, and the settings are saved. The XProtect Smart Client application is restarted and the "Mavili Sprvrs +" tab is clicked. It can be seen that the Sprvrs + Plug-in application lists the relevant maps and networks.



3. PROGRAM USAGE

3.1 Program Areas



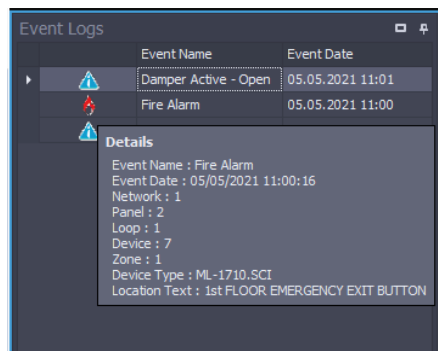
Event Logs Area: It is the area where all activities performed are instantly displayed. Instant device connection statuses, "Alarm", "Silence Alarm" etc. commands and all interventions made to the system, all fire events are instantly displayed in this area.

Maps and Devices Area: It is the area where the map and connected sub-maps are listed and all devices added to the configuration can be viewed. Switching between panels can be made as "Maps" and "Devices". In addition, by clicking on the simulation part, you can switch to a panel page where fault and fire events can be simulated.

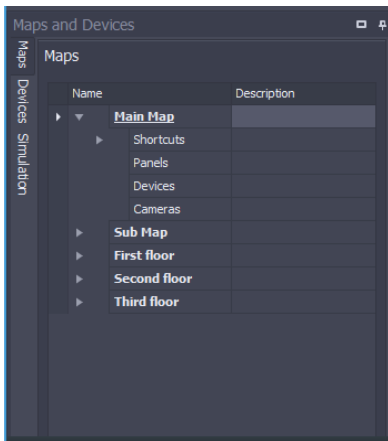
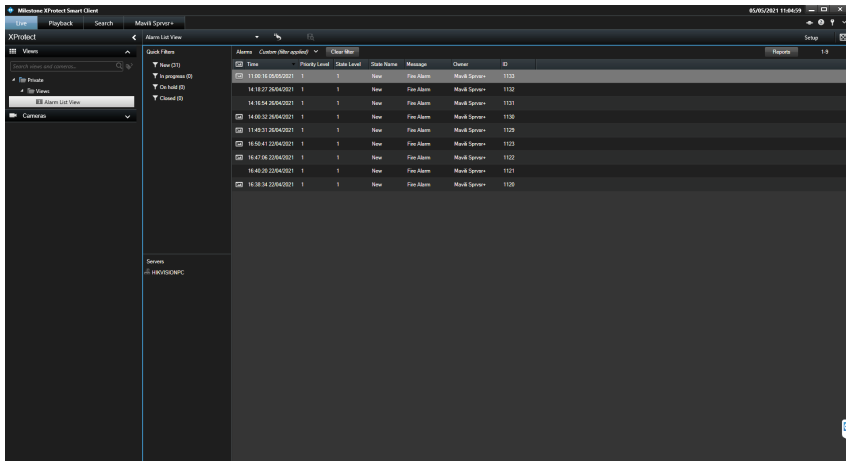
Main Screen Area: It is the area where maps and devices are graphically displayed. Where and from which devices the alarm comes from in case of fire is displayed here.

3.2 Access to Event Logs Information

In the event logs area, the system opening/closing, alarm, fault, etc. fire events are displayed. In addition, all interventions made to the system with buttons such as reset, silence alarm, etc. are also shown here. In order to access detailed information such as network, panel, loop, location, etc. where any fire incident or system intervention was made, it is sufficient to click on the relevant event log. The information screen will open automatically.



In addition, by clicking on the "Live" button in the program, all events occurring in the system are given in more detail according to their time. If desired, filtering can be done according to criteria such as date, time, priority level, etc.



3.3 Access to Map and Device Information

The main map is the area where the panel, camera and devices connected to the sub-maps and maps are listed. To switch between maps, it is sufficient to click on the map you want to view. The corresponding map transition will be provided on the main screen panel.

If devices are added to sub-maps via the Sprvrs + application, the locations of the relevant devices can be seen on the maps. Maps and devices can be easily examined by zooming and dragging to the desired location.



3.4 Fire Situation and Remote Control Operations

In case of fire, automatic switching from the main map to the sub-maps will be displayed on the main screen of the program from which device the fire comes from.

2. Case

1. Case



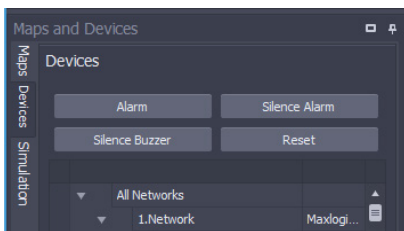
3. Case



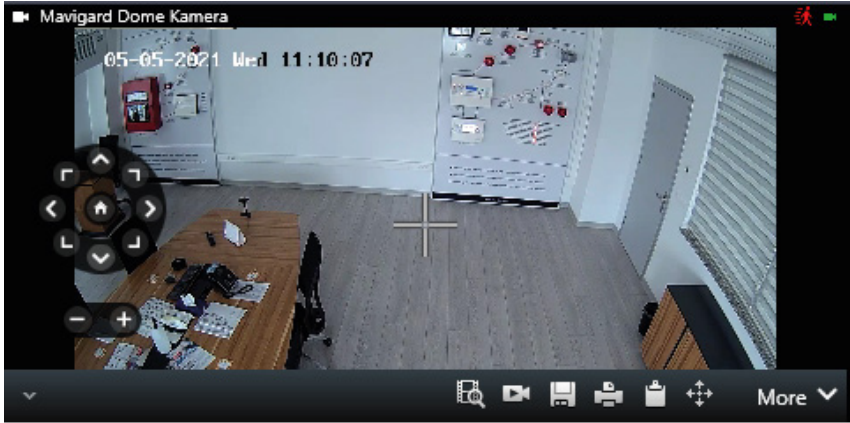
Images related to the camera or cameras that match the device that the fire alarm came from automatically start to be displayed at the bottom of the screen. When it is desired to intervene in the fire incident with remote control operations, it can be intervened with the commands "Alarm", "Silence Alarm", "Silence Buzzer" and "Reset" by going to the devices menu in the program, as well as accessing the interface of the panel on the map.

Panel Interface

Devices Menu



If the camera has PTZ feature for cameras that are opened just below the screen, the cameras can be controlled on this page. In addition to the PTZ feature, any digitally selected zone can be zoomed, instant photo recording and printing. For these operations, the tools at the bottom of the screen where the video image is displayed should be used.



4. RELATED PRODUCTS

Product Code	Product Description
ML-1636.3	Maxlogic SPRVSR + Plug-In Graphical Monitoring Software, XProtect Integration
ML-1661.3.3	Maxlogic Sprvsr + Plug-In USB Dongle, XProtect Authorization