

Orbnet Systems are proud to Present:

The RTSP Server



Table of Contents

Overview of the components	4
What is The RTSP Server?	4
Current list of features:.....	4
Installation	4
License.....	4
The RTSP Server Options.....	5
User Settings	5
How to Stream a camera out of Milestone XProtect.....	6
Testing.....	7
Debugging	7

Overview of the components

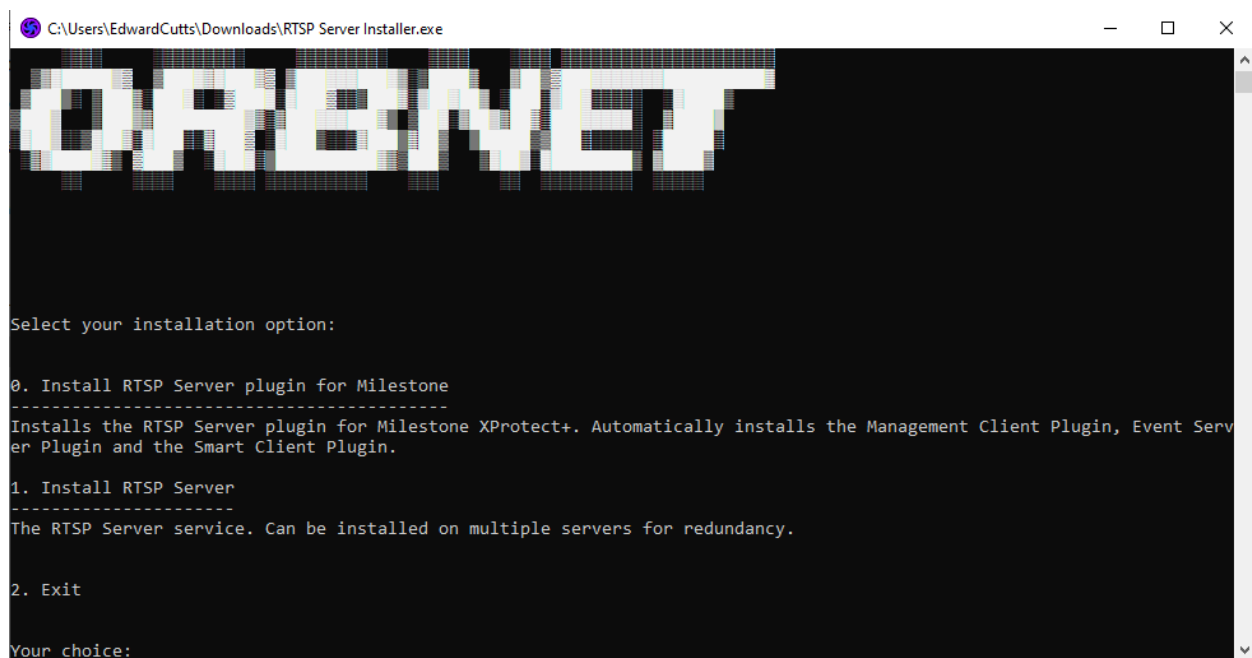
What is The RTSP Server?

Current list of features:

- The RTSP Server allows the outbound streaming of RAW video data from Milestone out to third party systems. This simply requires a single enabled outbound port 8554 and knowledge of the Milestone applied camera GUID.

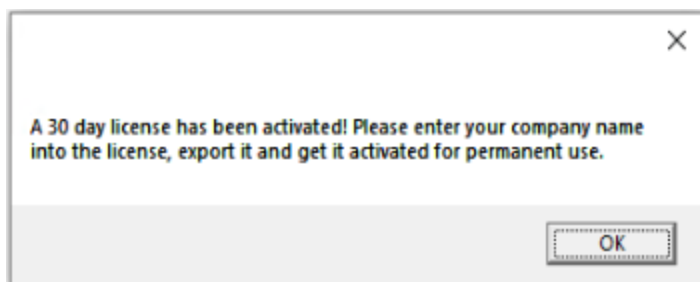
Installation

Everything you need to install The RTSP Server is self-contained in the “RTSP Server Installer.exe” - This takes the form of a two-pass installer. Run the executable and press “0” on your keyboard and hit “Return”. The installer will ask permission to kill the Event Server and/or management client. Run the installer again to then Select option 1 and install the RTSP Server itself.



License

After installing The RTSP Server, you automatically start a 30day trial as you open The RTSP Server tab for the first time in the Milestone XProtect Management Client. The number of testing days remaining in the trial will appear in a popup window every time you open this page. You must make sure the features you want to use are activated in the list below. If the page is blank, re-open the management client and run as “Administrator”.

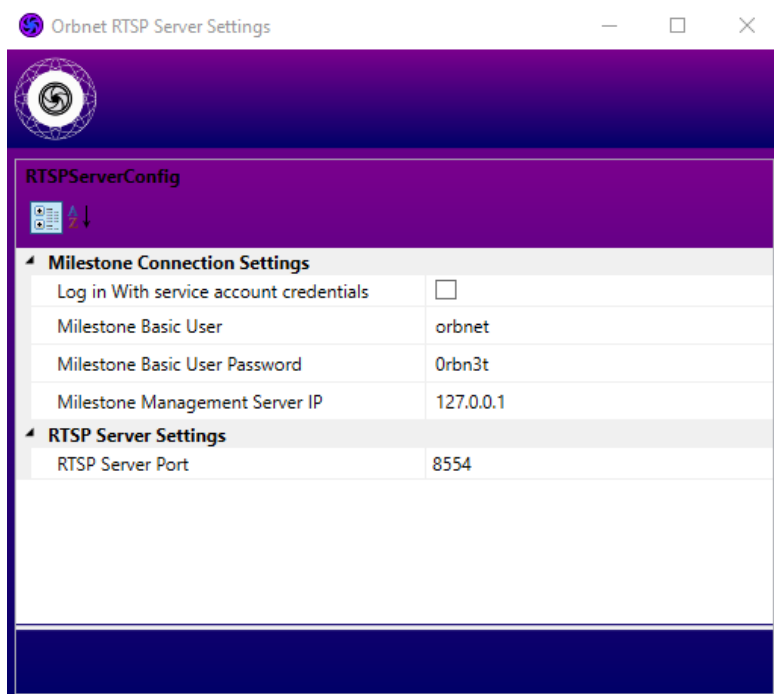


When you decide to purchase a license, simply select the features want to use, fill in the “Client Name” field and press the “Generate License Request File” button. This will prompt you to save the license on your hard drive. Email the license request to info@orbnet.com and we will send you an invoice, you can either pay via PayPal or request Bank Account Details. Once the payment is sent, please send another email to info@orbnet.com and allow 1 business day to deliver you the license to you. Credit terms can be arranged dependent upon project scope. A Pricing Excel is available to download from orbnet.com/pricing/prices2020.pdf

The RTSP Server Options

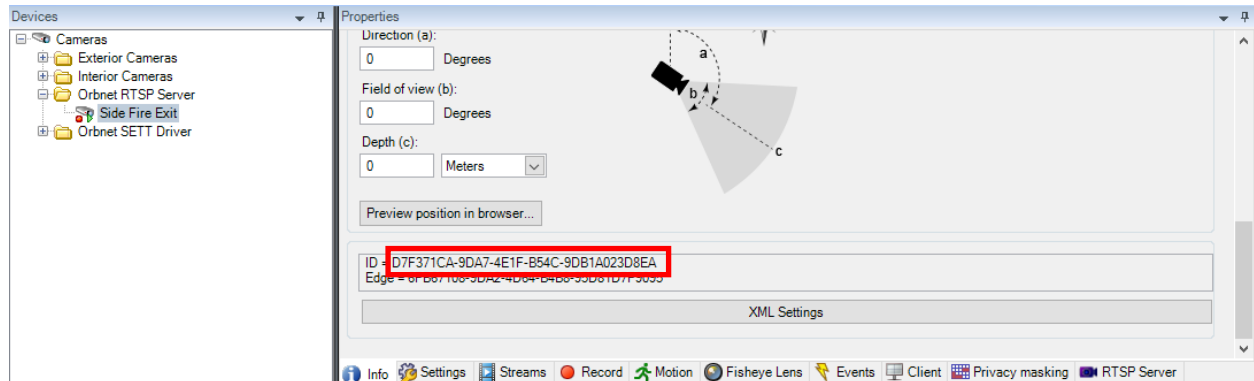
User Settings

To use the RTSP Server you must create basic user in the Milestone Management Client. The RTSP Server does have a predefined user created and you can if wish mirror these credentials in the Management Client and apply the user to a role with access to the cameras that you intend to be available via the RTSP Service.



How to Stream a camera out of Milestone XProtect

The method of connection is to use the camera GUID that Milestone assigns to the camera. To obtain this, in the Milestone Management Client <CTRL> Click the info tab, in the right window scroll to the foot of the information and you will see two values



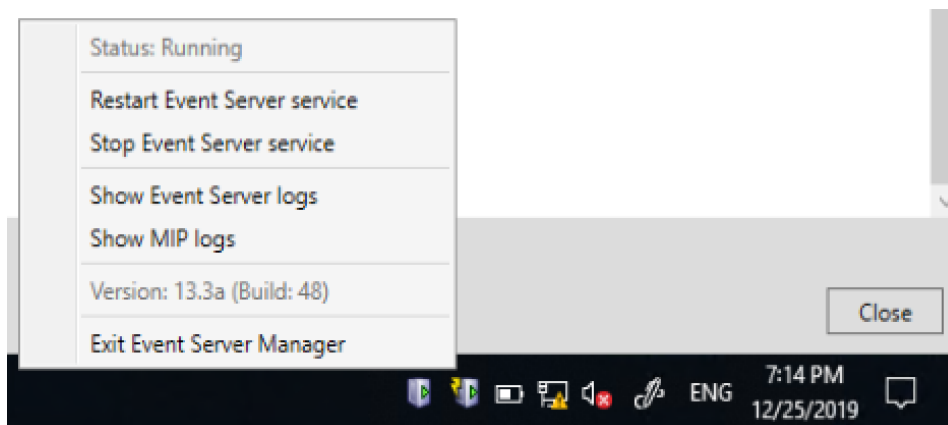
Testing

To test the outbound streaming of The RTSP Server we recommend using VLC - <https://www.videolan.org/vlc/index.en-GB.html>

Debugging

If you have connecting to streams output from the RTSP Server check the following.

Windows Firewall is set to allow connections on the defined port: 8554 by default.



Milestone XProtect Event Server and MIP logs are highly verbose and can provide useful information to debug the problem before contacting Orbnets Systems.