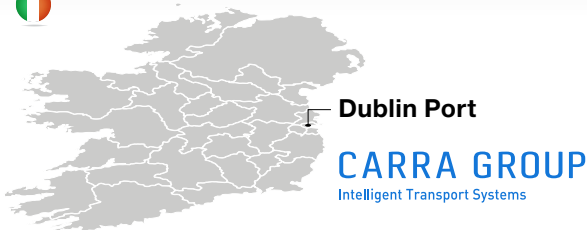


BREXIT: The departure of the UK from the EU has necessitated additional Customs checks and inevitable delays for hauliers passing through Irish ports.

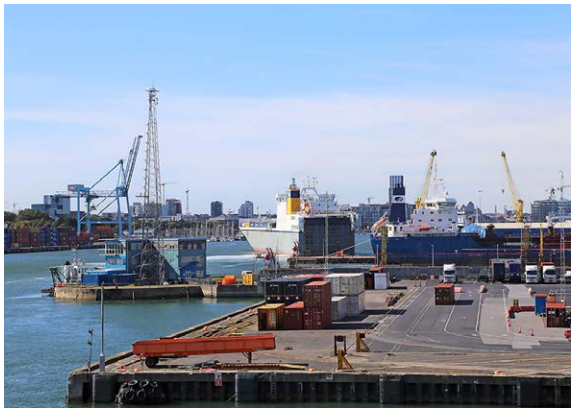


To prevent HGV congestion in Dublin City, Dublin Port Tunnel approaches to the port, Customs Clearance Areas have been constructed outside the City where HGVs can be processed before entering the port area.

How to ensure that HGVs actually visit the Customs Clearance Areas?

This difficult problem was solved by Carra ITS, our partner in Ireland. FF Group on-camera application Traffic CaMMRa has become part of the unique intelligent transportation system for the Dublin Port area.

Who is the customer: Irish Infrastructure & Port



Customer demands:

HGVs entering the Customs Clearance Areas are

- Whitelisted for entry to the Port
- Automatically issued a paper ticket

HGVs approaching the Port are checked against the Whitelist

- Vehicles not on Whitelist to activate a “Stop” audio/visual alert on the roadside.
- An update is sent to networked SmartTablets showing the vehicle to stop.
- Officers stop the vehicle and determine whether access to the Port is permitted.

Online reporting on all key performance indicators.

Solution architecture:

- 1 Traffic CaMMRa Application at each site recognizes vehicle license plates and its type, date, time and the registration country onboard the Axis Q1700LE Camera.
- 2 Carra’s ComsHub (ITS integration outstation) installed at each site implementing the distributed system:



Handling HTTP feeds from each local camera



Controlling ticket machines



Activating VMS / beacons / sirens

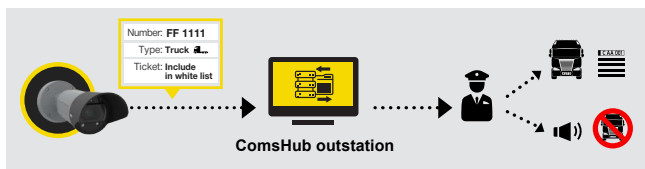


Peer-to-peer secure transmissions between sites (whitelists/reporting)



Serving out local WiFi – updating enforcement App on Officers’ Tablets in range

How the system works:



- 1 Each smart Axis camera with TraFFic CaMMRa captures the vehicle license plates and type (Truck) at each of the Customs Clearance Areas and Port.
- 2 Traffic data is sent via UTMC protocol to a local, peer-to-peer connected, ComsHub outstation for vehicle verification and inclusion on the daily whitelist. Trucks arriving at the Customs Clearance Areas trigger the system to print a unique ticket, featuring the truck's VRN, and transmits the updated whitelist to the Port entry point.
- 3 Recognized data from TraFFic CaMMRa at the Port entry point is sent via the UTMC protocol to its local ComsHub, which controls all truck-flow at that site. If the truck VRN is not matched on the daily whitelist, the officers see & hear an audio / visual alert & get a signal on their iPads / smartphones to speak to the driver approaching the Port

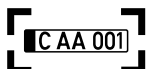
Benefits:



Truck recognition



Whitelist check



License plate recognition



Max. vehicle speed: up to 160 km/h



Truck statistics collection and analysis

Accuracy: above **>95%**



Reports are available 'per period'

Public comments:



Paul McCarthy, Integrations Specialist, Carra Group

“Very straight-forward to deploy & configure. We found the FF ANPR ServicePack reliable, versatile and good value for money”

Customize Your Needs

We know how to make LPR/MMR part of your projects useful and still cost-effective. Use **FF Group** expertise and order to discuss your customized product with our BDM **Jan Hazlbauer** J.hazlbauer@ff-group.org!

Follow us:



Site



Facebook



Twitter



LinkedIn