

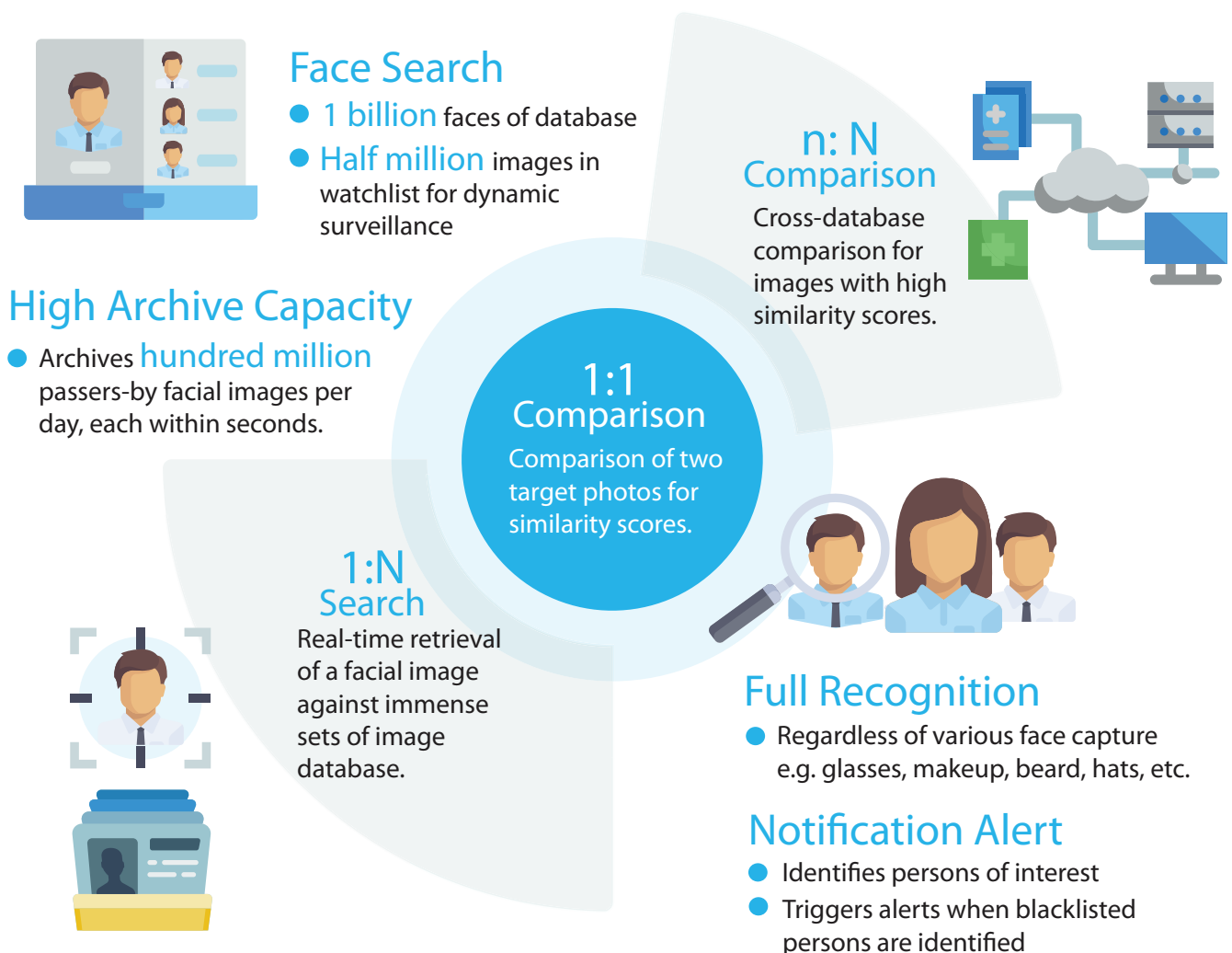
Public Safety & Security

Face-in-one

Border security
Transportation hub
Critical infrastructure
Community safety

Gigantic. Complex. Agile.

ScanVis **Face-in-one** is a powerful face search platform with a gigantic capacity of face dataset for community security at city and national level. It works with connected video to boost surveillance capabilities and improve officer safety. This municipal-grade security tool helps law enforcement agencies to efficiently react to, respond to, and solve incidents.



Keep the community safe

Protecting crowded spaces, prevent crime and secure sensitive locations

Real-time Surveillance

Face-in-one features push alerts when detecting persons-of interest in predetermined image database encroaching upon public or private spaces.

With operations center being constantly informed, officers and other first responders know exactly what or whom to look for. This not only improves their safety, but also enables more coordinated response with better chances of immediate arrests.



Cameras directing video feeds and data into operation centers for instant situational awareness.



As a highly scalable, efficient and secure face search platform, the solution also supports

Comprehensive **Log Management**

Logging, retention, viewing, and exporting of the logbook.

Multiple **Authorization Level** in backend control panel
E.g. system admin, security personnel, department admin.

Scalability of **System Architecture**

Cross-cluster data sharing, retrieval and surveillance within the area of operation.

Why Face-in-one?

Cross-location intelligence

Performs flawlessly across thousands of locations.



Creating a shared threat intelligence network.

Matching faces in a crowd

Enables group photos upload and process matching against those in the huge dataset of faces.



Speeding investigations and uncovering critical video evidence.

Easy deployment

Provides options of software and all-in-one server for scalability.



Giving efficiency and flexibility for wider range of scenarios.

Applications

For law enforcement agencies

Border security
Security checkpoints
Critical infrastructure
Transportation hub

For municipality

Community safety
Smart city

Please contact our sales team for case study material at sales@scanvis-ai.com. www.scanvis-ai.com

This information is subject to change without notice. Copyright © 2019 Comba Telecom Limited. All rights reserved. ScanVis and ScanVis logo are registered trademarks of Comba Telecom Limited. SVB-PSS-Face-in-one-1-0-0-2019

Comba