



GJD Knowledge Base Article Clarius Driver Integration with Milestone XProtect

Most Recent Update : 05/15/2020

Objective: This article describes the steps necessary to connect your GJD Clarius IP illuminator to Milestone XProtect VMS.

Note: This article assumes you have powered up & IP addressed your GJD IP enabled illuminators and have at minimum, Milestone XProtect 2019 R3.

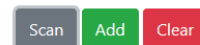
Models Supported: VM-CW-IP, IM-8-IP, IM-9-IP

Procedures

GJD Gateway Software Download and Installation

1. Download and install GJD Gateway software which can be found here, or by visiting our site:
www.gjdusa.com
2. Run and install GJD Gateway by following the onscreen prompts. An icon will appear on your desktop, or you may open a web browser and go to <http://localhost:5000/>
3. Press the **Scan** button to search your network for GJD IP Devices. If the device is located on another network or auto-discovery is prevented for any reason, click the **Add** button to manually configure the device. Once the scan has finished, discovered/added devices will now appear in the Devices list and are now ready to be added to Milestone.

Devices

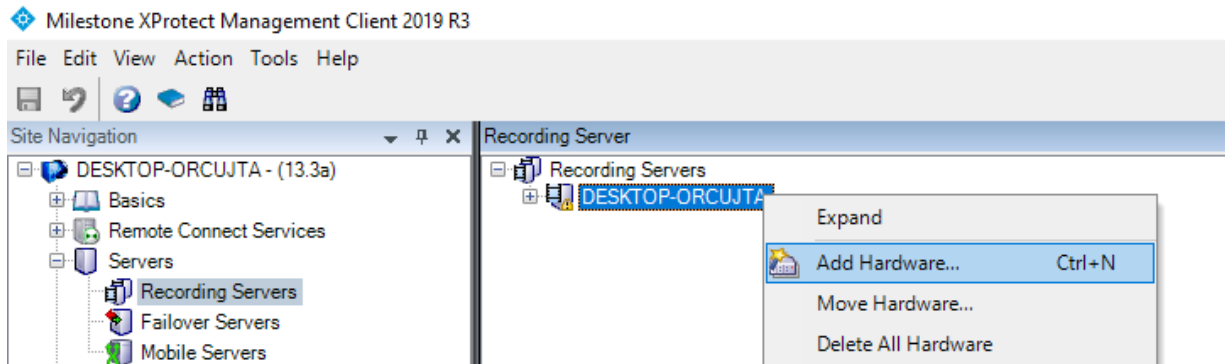


Device type	MAC	Host	Port	Milestone Host	Milestone Port	Paired with Milestone
clarius	70-B3-D5-D1-F6-D0	192.168.1.140	80	localhost-70-B3-D5-D1-F6-D0	5000	No
dtect	70-B3-D5-D1-FB-7D	192.168.1.131	80	localhost-70-B3-D5-D1-FB-7D	5000	No
clarius	70-B3-D5-D1-F6-3A	192.168.1.10	80	localhost-70-B3-D5-D1-F6-3A	5000	No
dtect	70-B3-D5-D1-F9-D1	192.168.1.160	80	localhost-70-B3-D5-D1-F9-D1	5000	No

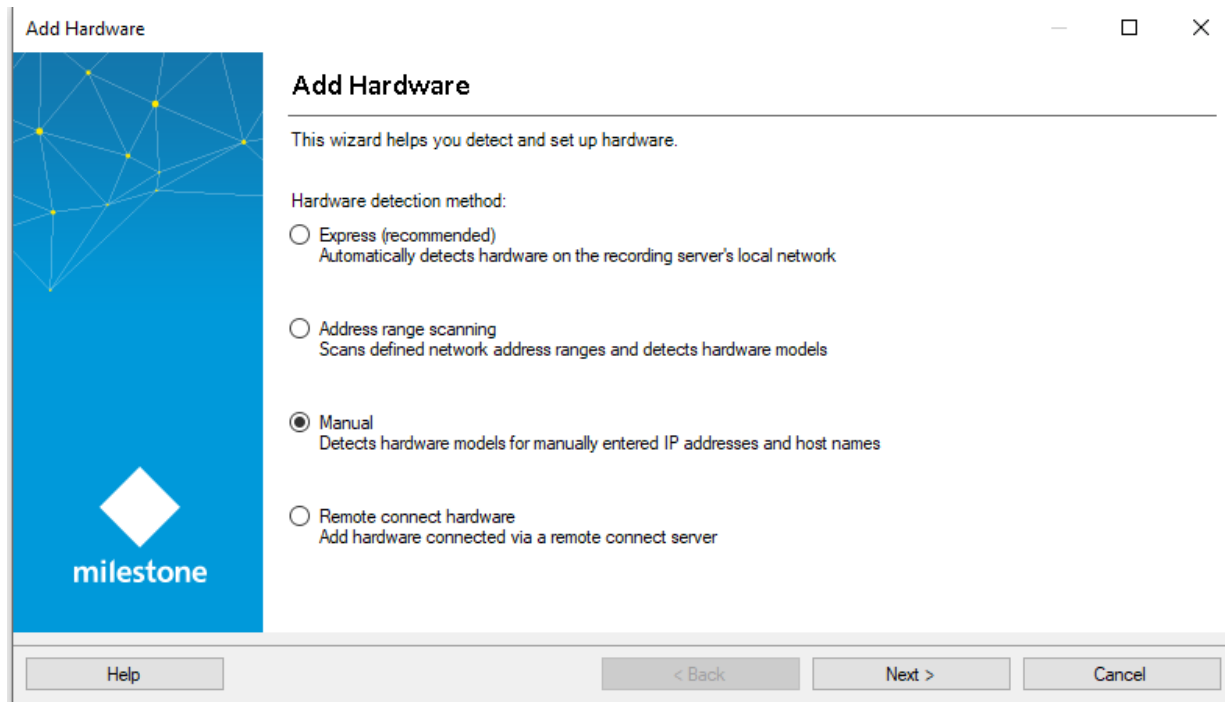
XProtect Management Client

Note: If not created already, you will need to make a new folder called 'MIPDrivers' under **C:/Program Files/Milestone**. Ensure you unzipped or copy and pasted the GJD drivers into this folder prior to moving forward in this walkthrough.

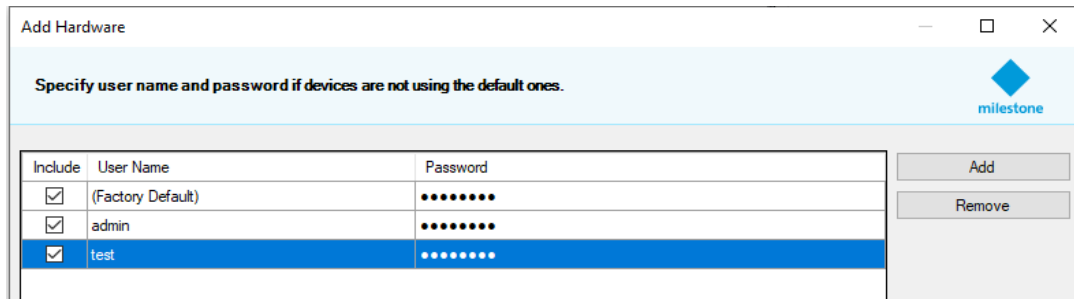
1. Launch Management Client then navigate to **Recording Servers** in the left pane and right click>**add hardware** to the desired recording server.



2. Select **Manual** and click **Next**



3. **Add/Select** the credentials used when setting up your GJD IP devices initially, then click **Next**.

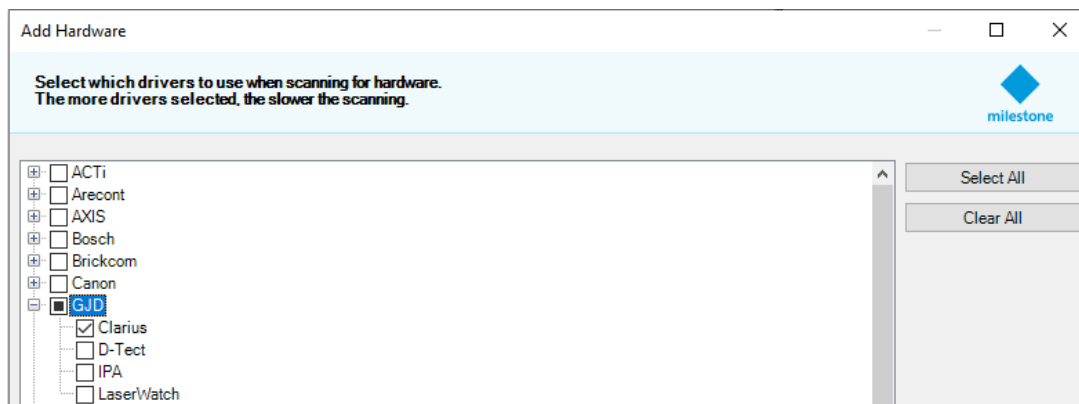


Specify user name and password if devices are not using the default ones.

Include	User Name	Password
<input checked="" type="checkbox"/>	(Factory Default)
<input checked="" type="checkbox"/>	admin
<input checked="" type="checkbox"/>	test

Buttons: Add, Remove

4. Scroll down to find **GJD** and expand the list to select the device(s) you are setting up. Select **Clarius** and click **Next**.

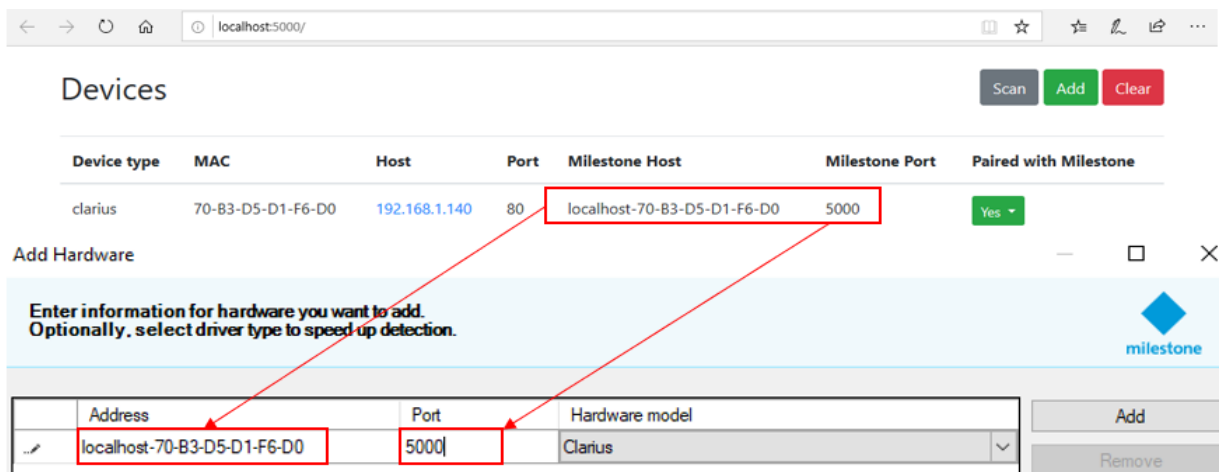


Select which drivers to use when scanning for hardware. The more drivers selected, the slower the scanning.

- ☐ ACTi
- ☐ Arecont
- ☐ AXIS
- ☐ Bosch
- ☐ Brickcom
- ☐ Canon
- ☒ **GJD**
 - ☒ Clarius
 - ☐ D-Tect
 - ☐ IPA
 - ☐ LaserWatch

Buttons: Select All, Clear All

5. It is Important to note that you must use the Milestone Address and Milestone Port located in the Gateway web page. Copy and paste the correct information from the Gateway to Management Client.



Devices

Device type	MAC	Host	Port	Milestone Host	Milestone Port	Paired with Milestone
clarius	70-B3-D5-D1-F6-D0	192.168.1.140	80	localhost-70-B3-D5-D1-F6-D0	5000	Yes

Add Hardware

Enter information for hardware you want to add. Optionally, select driver type to speed up detection.

Address	Port	Hardware model
localhost-70-B3-D5-D1-F6-D0	5000	Clarius

Buttons: Add, Remove



- After entering the Milestone Address and Port information, select **Clarius** from the **Hardware model** list, and click **Next**.

Add Hardware

Enter information for hardware you want to add.
Optionally, select driver type to speed up detection.

milestone

Address	Port	Hardware model
localhost-70-B3-D5-D1-F6-D0	5000	(Auto-detect)

- Milestone will then attempt to detect the added hardware. On **Success**, select the hardware you wish to add from the list and click **Next**.

Add Hardware

Wait while your hardware is being detected.
Once detection has completed, select which hardware to add.

milestone

Detected hardware:

Add	Address	Port	Hardware model	Status
<input checked="" type="checkbox"/>	localhost-70-B3-D5-D1-F6-D0	5000	Clarius	✓ Success

- After a successful detection, Milestone will then connect to each hardware device and collect information regarding the inputs & outputs available. When each device has a status of **Success**, click **Next**.

Add Hardware

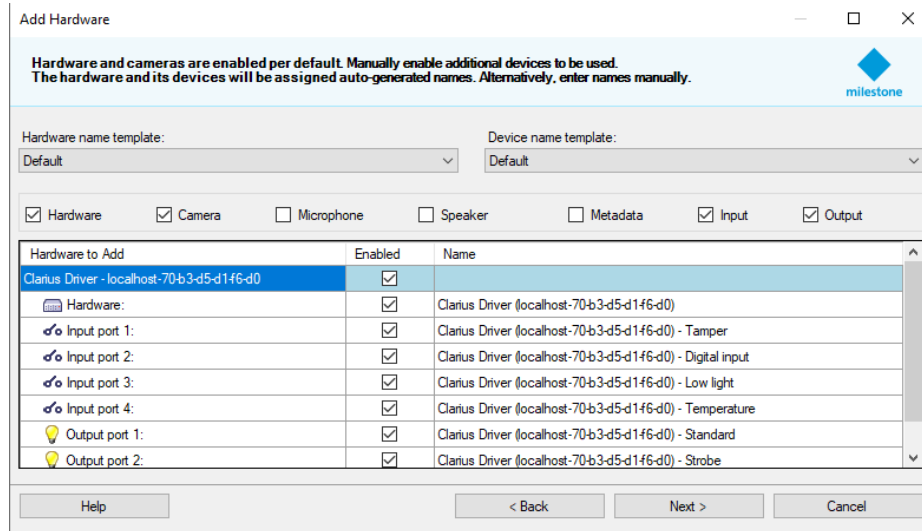
Wait while the system connects to each hardware and collects device specific information.
Successfully collected hardware will be added.

milestone

Collected hardware information:

Address	Port	Hardware model	Status
localhost-70-B3-D5-D1-F6-D0	5000	Clarius	✓ Success

9. Select the inputs and outputs from each device that you would like to use. If you are unsure which ones you will be using, you may select the Input and Output boxes, which will select all I/O's on all devices. Click **Next** when finished.



Add Hardware

Hardware and cameras are enabled per default. Manually enable additional devices to be used. The hardware and its devices will be assigned auto-generated names. Alternatively, enter names manually.

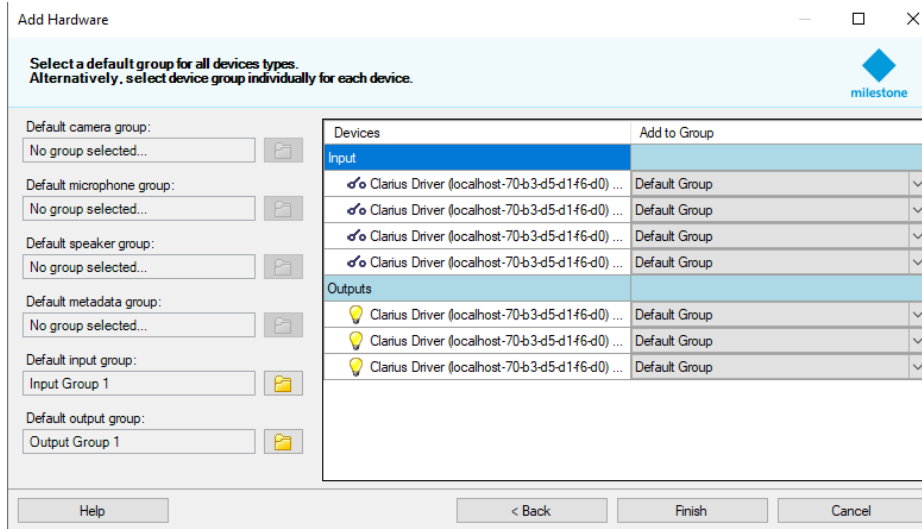
Hardware name template: Default Device name template: Default

☒ Hardware ☒ Camera ☐ Microphone ☐ Speaker ☐ Metadata ☒ Input ☒ Output

Hardware to Add	Enabled	Name
Clarius Driver - localhost-70-b3-d5-d1-f6-d0	<input checked="" type="checkbox"/>	Clarius Driver (localhost-70-b3-d5-d1-f6-d0)
Hardware:	<input checked="" type="checkbox"/>	Clarius Driver (localhost-70-b3-d5-d1-f6-d0)
Input port 1:	<input checked="" type="checkbox"/>	Clarius Driver (localhost-70-b3-d5-d1-f6-d0) - Tamper
Input port 2:	<input checked="" type="checkbox"/>	Clarius Driver (localhost-70-b3-d5-d1-f6-d0) - Digital input
Input port 3:	<input checked="" type="checkbox"/>	Clarius Driver (localhost-70-b3-d5-d1-f6-d0) - Low light
Input port 4:	<input checked="" type="checkbox"/>	Clarius Driver (localhost-70-b3-d5-d1-f6-d0) - Temperature
Output port 1:	<input checked="" type="checkbox"/>	Clarius Driver (localhost-70-b3-d5-d1-f6-d0) - Standard
Output port 2:	<input checked="" type="checkbox"/>	Clarius Driver (localhost-70-b3-d5-d1-f6-d0) - Strobe

Help < Back Next > Cancel

10. Select a default group for your I/O's to be part of, or create a custom group depending on your setup preferences. Click **Next** when finished.



Add Hardware

Select a default group for all devices types. Alternatively, select device group individually for each device.

Default camera group: No group selected...

Default microphone group: No group selected...

Default speaker group: No group selected...

Default metadata group: No group selected...

Default input group: Input Group 1

Default output group: Output Group 1

Devices	Add to Group
Input	
Clarius Driver (localhost-70-b3-d5-d1-f6-d0) ...	Default Group
Clarius Driver (localhost-70-b3-d5-d1-f6-d0) ...	Default Group
Clarius Driver (localhost-70-b3-d5-d1-f6-d0) ...	Default Group
Clarius Driver (localhost-70-b3-d5-d1-f6-d0) ...	Default Group
Outputs	
Clarius Driver (localhost-70-b3-d5-d1-f6-d0) ...	Default Group
Clarius Driver (localhost-70-b3-d5-d1-f6-d0) ...	Default Group
Clarius Driver (localhost-70-b3-d5-d1-f6-d0) ...	Default Group

Help < Back Finish Cancel

11. You have now successfully added your GJD IP devices to Milestone XProtect Management Client.

If you require additional assistance, please call our toll-free number at 1 (855) 241-2264 or email us at info@gjdusa.com