



# UNMONITORED CAMERAS DON'T PREVENT TRAGEDIES, THEY RECORD THEM.

## AVOID HARM WITH PROACTIVE SECURITY.

Maximize safety by adding a proactive layer of security to current surveillance with IntelliSee threat-detection. You've already invested in a camera system—strengthen it by adding IntelliSee active monitoring.

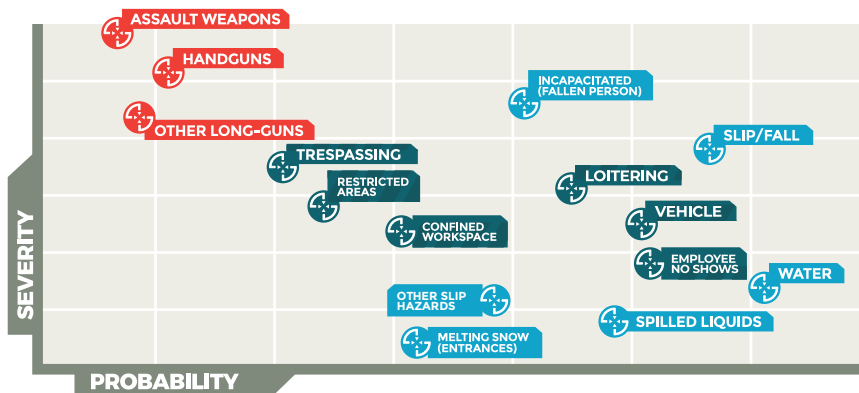
## HINDSIGHT IS 20/20. INTELLISEE IS 24/7/365.

Even the most dedicated staff may not notice the puddle under the drinking fountain, the person loitering in the parking lot, or the maintenance employee who fell in the hallway after hours.

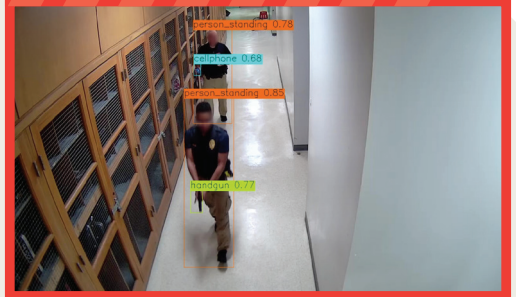
IntelliSee autonomously detects these risks and sends immediate alerts to designated contacts without storing footage, personally identifiable information (PII), or using facial recognition.

Meaning you have 24/7/365 situational awareness without violating FERPA or other privacy restrictions.

## STATE AND FEDERAL FUNDING OFFERS A HELPING HAND TOWARD SAFER SCHOOLS.



### ALERT - WEAPON DETECTED



### ALERT - SLIP RISK DETECTED



### ALERT - TRESPASS DETECTED



## LIABILITY DOESN'T END WHEN THE SCHOOL BELL RINGS.

Contact us today for a 10-minute demo!

[Intellisee.com/contact](https://intellisee.com/contact) or [sales@intellisee.com](mailto:sales@intellisee.com)