



6SS Eyewall® is a XProtect plug-in that allows the creation of an unlimited number of walls, presets and monitors including custom layout designs. It is also integrated with XProtect alarm manager in order to display pop-up alarm notifications on top of the camera feed.

6SS Eyewall® is initially deployed and configured by a system administrator in the Management Client which includes the presets related to the wall layout and the camera and monitor distribution.

Operators using the Smart Client will have the ability to apply the different presets and hence specify what is being displayed for smarter and more efficient monitoring.

## Data Flow

1. The XProtect Management Client retrieves the layouts from the management server.
2. The XProtect Management Client (Plugin Installed) inserts data in the SQL server of the Wall, monitor, presets, layouts, and rules created by the user.
3. The Smart client is connected to Management, Event, Log and SQL Server in order to push alarms, detect triggered rules and retrieve the walls and monitor.
4. The Recording Server will send frames of the cameras that are in monitors.
5. The chosen wall by the user will be sent to the videowall to be seen in full view.

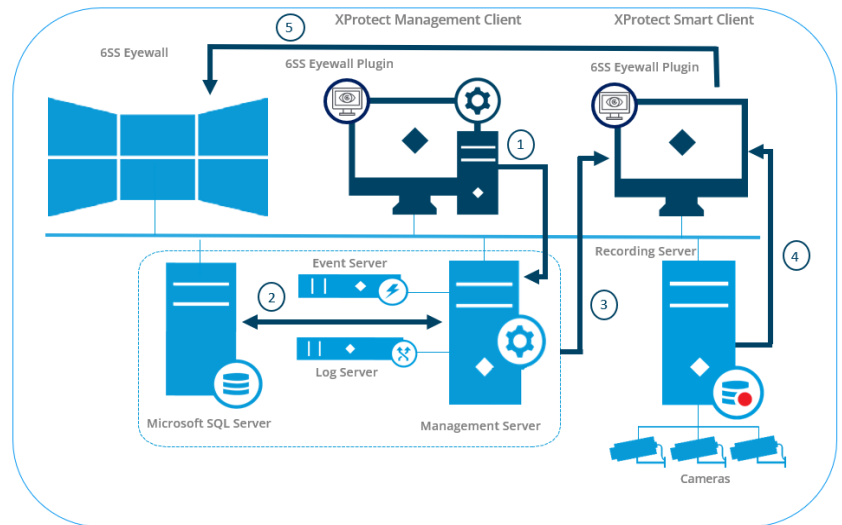
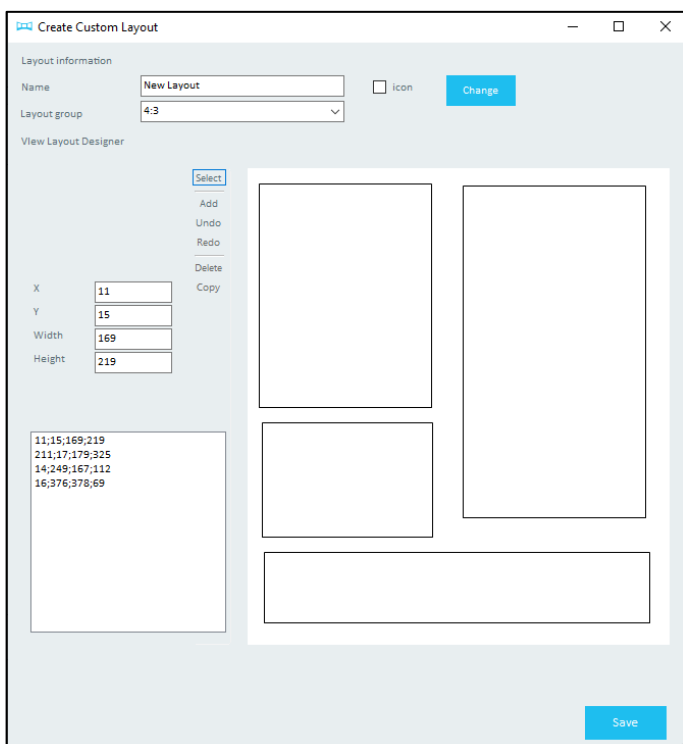
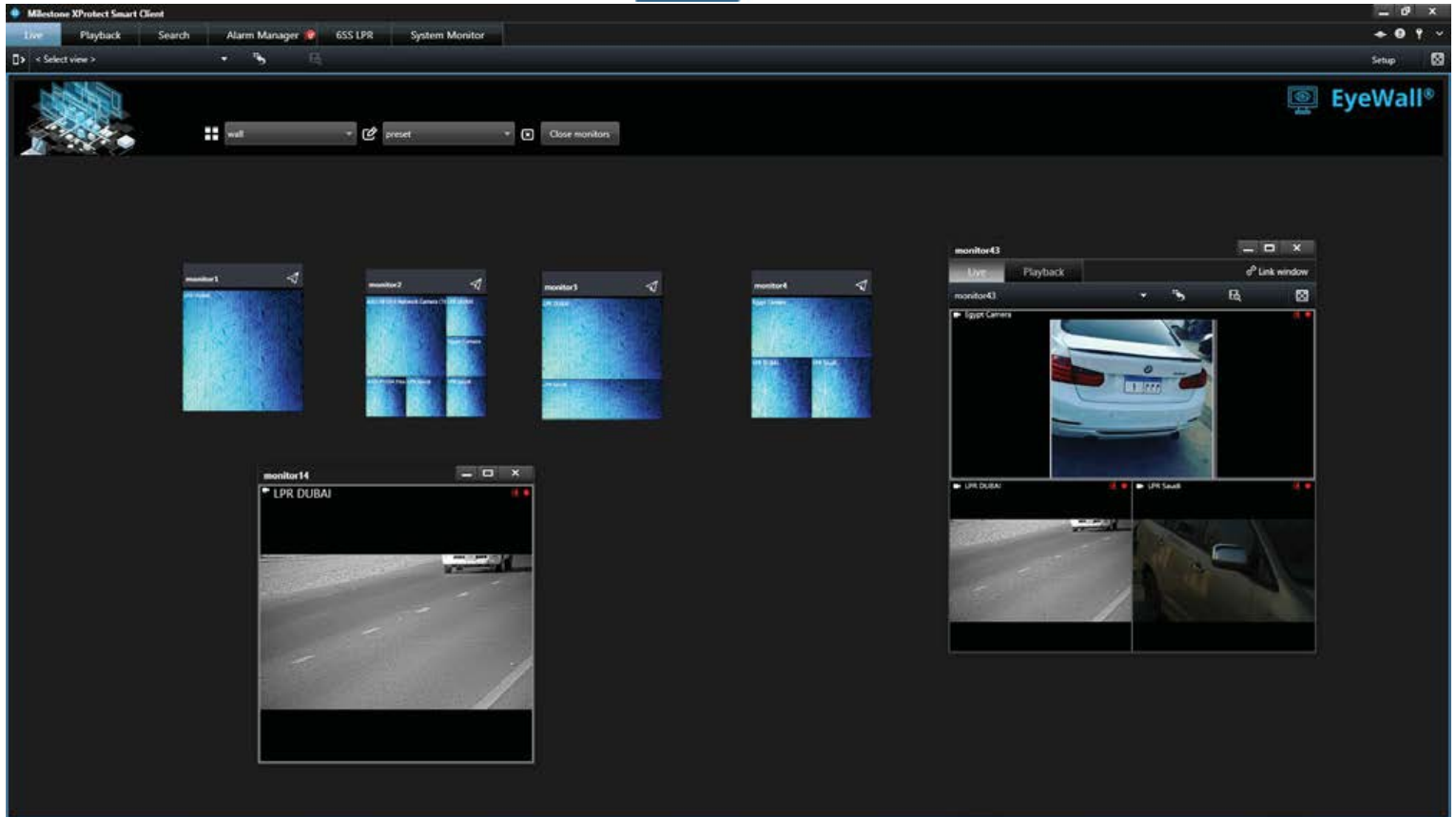


Figure 1 System Architecture



## Main Benefits

- Cost effective
- Simplified setup
- Reduced configuration time
- Increased operator visibility
- Improved decision making with alarm integration
- Simplified situation management high scalability
- Reduced IT resources
- Development team is always available to add customer-tailored features in case needed



## Features

1. Advanced add-on video wall for Milestone XProtect
2. Supports all XProtect versions (Essential+, Express+, Professional+, Expert and Corporate)
3. Easy to install and configure
4. Improves response time
5. Improves situational awareness
6. Complete overview of large surveillance systems.
7. Configured from XProtect Management Client
8. Integrated with XProtect Smart Client
9. Allows the creation of unlimited number of walls, presets, monitors
10. Ability to create custom layout designs
11. Easily switch between multiple walls and presets
12. Ability to send the whole view to a floating window
13. Ability to send the whole view to another screen in full mode
14. Floating window displaying live camera with the ability to switch to playback mode
15. Disconnect/Reconnect monitors
16. Integrated with Pop-up alarms to show latest alarm information along with event snapshot
17. Alarm pop-up timeout capability
18. Ability to close all opened windows in one click



19. Ability to display alarm notification text on top of the camera feed
20. Hardware independent by supporting standard servers and display monitors
21. Drag-n-drop single camera in a certain position of the monitor view layout
22. Drag-n-drop a whole view into monitor view
23. Drag-n-drop Text and HTML view into monitor view
24. Ability to Set Eye Wall to a previously defined Preset based on a defined rule
25. Ability to Show a specific Camera based on a defined rule
26. Ability to Set a Specific Wall Monitor to Show a text Message based on a defined rule
27. Ability to Remove Camera from a specific Eye wall Monitor based on a defined rule
28. Ability to create rules specific to 6SS EyeWall®

## System Minimum Requirements

### 1. Operating System

- Microsoft® Windows® 10 Pro
- Microsoft® Windows® 10 Enterprise
- Microsoft® Windows® 10 Enterprise LTSB (Long-Term Servicing Branch) 2016 (version 1607 or later)
- Microsoft® Windows® 10 Enterprise, version 1803 or later (64 bit), IoT Core
- Microsoft® Windows® 11 Pro
- Microsoft® Windows® 11 Enterprise
- Microsoft® Windows® Server 2016: Standard and Datacenter
- Microsoft® Windows® Server 2019: Standard and Datacenter
- Microsoft® Windows® Server 2022: Standard and Datacenter

### 2. Software

- Microsoft® .Net 4.7.2 Framework or newer
- DirectX 11.0 or newer

### 3. Hardware acceleration

- Hardware acceleration with Intel® Quick Sync requires an Intel® CPU from 6<sup>th</sup> generation, supporting Intel Quick Sync and Intel® GPU enabled in BIOS
- Using Intel® Quick Sync on Intel® CPU 12<sup>th</sup> generation, requires at least driver version 31.0.101.3413 from Intel
- Decoding with NVIDIA graphics card is supported with GPU capability version 6.x (Pascal) or newer

### 4. Milestone XProtect Version

- XProtect version 2018 R3 and above.

### 5. Microsoft SQL Version

- Microsoft SQL Server Express, Standard or Enterprise edition

## Business Value

No need to upgrade your Milestone XProtect product in order to use the Smart Wall feature. 6SS EyeWall® is compatible with all Milestone XProtect versions including Essential plus. You can save time and money by purchasing this simple and easy-to-use plug-in which comes loaded with many important features that are a must in today's complex surveillance networks.