

FEDERATOR Manual



6SS

6SS L.L.C.

Bryant Ave N-Brooklyn Park-MN 55444 USA

Tel: +1-651-233-0977

E-mail: info@6ss.co

Web: www.6ss.co

May 2020

TABLE OF CONTENTS

1.	INTRODUCTION	4
2.	GETTING STARTED	5
2.1	System Requirements	5
2.2	Quick Start	5
2.3	System Introduction	5
3.	FEDERATOR SETUP	6
3.1	DB Setup	6
3.2	Federator Plugin Setup	8
4.	MANAGEMENT CLIENT MIP PLUG-IN.....	10
4.1	Camera Model Settings	11
4.2	Rules/Events/Alarms.....	12
4.3	Server Logs	14
4.4	Reports	15
4.5	System Monitor	16

TABLE OF FIGURES

Figure 1: Fedearator Architecture	5
Figure 2: Open Federator Setup Location.....	6
Figure 2: DBSetup Welcome Page	6
Figure 3: Specify SQL Server Name	7
Figure 4: Select DBSetup Installation Folder	7
Figure 5: Confirm DBSetup Installation.....	8
Figure 6: FederatorSetup Welcome Page	8
Figure 7: Select Federator Plugin Installation Folder	9
Figure 8: Installation Complete	9
Figure 9: XProtect management Client- Federator Plugin.....	10
Figure 10: Device settings	11
Figure 11: Models sub node	11
Figure 12: Update Device Model Settings.....	12
Figure 13: Rules and Events	12
Figure 14: Rule Context Menu	13
Figure 15: Copy Rule	13
Figure 16: Rule Creation Status.....	13
Figure 17: Rule/Event/Alarm Logs	14
Figure 18: Server Logs	14
Figure 19: Camera Report	15
Figure 20: HW Inventory Report.....	15
Figure 21: Recording Days Report	16
Figure 22: System Monitor	16

1. INTRODUCTION

6SS Federator® is a Milestone Management Client Plug-in that was developed by 6SS lead Software Engineers in order to act as an additional layer to Milestone XProtect to make the management of Milestone XProtect more efficient and much easier. With an embedded plugin you can save hours of time, provide better customer support by centralizing all XProtect sites operations including configuration and reporting in one centralized interface eliminating the need to login to each site which can be time consuming especially in multisite environment and huge deployments. This Plug-in allows the administrators to manage and configure multiple XProtect sites, visualize XProtect with dashboards and create beautiful customer ready reports.

FEDERATOR Main Features

Management/Configuration

- Copy rules, events and alarms from HQ site to all/selected sites
- Enable/Disable rules, events and alarms per site
- Delete rules, events and alarms from all/selected sites
- Change Camera name and password (custom or auto-generated)
- Add/Remove Cameras per site
- Change Camera settings (fps, resolution, codec) for all/selected models and apply to all/selected sites
- Create/Delete Users and Roles
- Copy time, smart client, management client, and evidence lock profiles to all/selected sites
- Restart all/selected Milestone services for all/selected sites
- Create and edit camera groups
- Add Camera to a group
- Add/Remove additional sites that do not belong to the federation architecture
- Remote assistance for federated sites with access privilege
- Apply the user name on top of live/recorded video
- Access smart client and Management client by using Face recognition and/or Fingerprint

Monitoring

- View the added rules, events and alarms for each federated site
- View all Cameras per site
- View rules, events and alarms log file
- View and filter the log file (system, audit, rule-triggered) for all federated sites
- Check the recording of devices over all sites including the database, storage path, recording start date, recording hours and retain hours
- View live feed from any camera
- Dashboards and Charts with live statistics for federated sites, recording servers, cameras, models, device groups, device status, rules and alarms

Reporting

- Hardware Inventory report for all/selected sites
- Recording servers, recording and archive storage disk sizes, used space and free space reports
- Milestone configuration reports
- Camera report (Name, IP, MAC Address, Status, login ID, Password)
- Ability to search the reports
- Ability to export the reports in Excel/PDF format

2. GETTING STARTED

2.1 System Requirements

- Windows OS 8.1 or above
- Microsoft SQL Server 2012 SP1 or above
- Milestone XProtect Corporate, XProtect Expert, XProtect Professional+, or XProtect Express+
- FEDERATOR Plugin v1.0 or above

2.2 Quick Start

- Milestone XProtect Management client already installed.
- Run the DBSetup.msi and enter HQ SQL server name.
- Run the FederatorSetup.msi.

2.3 System Introduction

The below figure describes the Federator architecture which consists of one main site and unlimited number of child sites. With the Federator setup installed on the main site you can directly use the federator plugin from Milestone XProtect Management Client, without the need to login to the child site for any configuration.

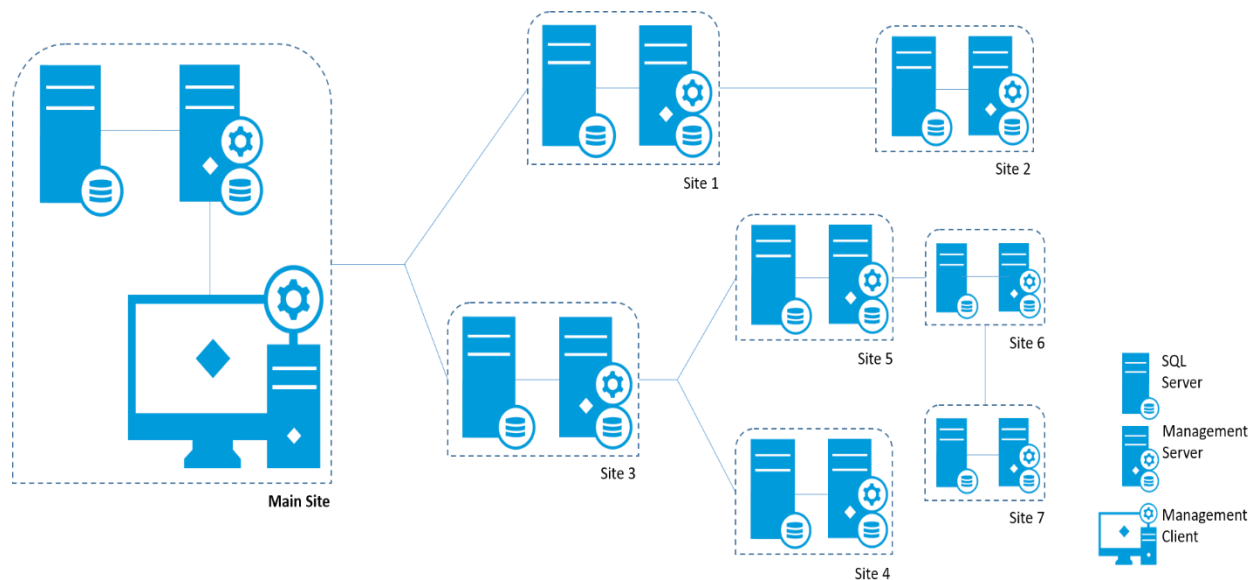


FIGURE 1: FEDERATOR ARCHITECTURE

3. FEDERATOR SETUP

3.1 DB Setup

First open the copied folder received 6SS-Federator and double click on **DBSetup**.

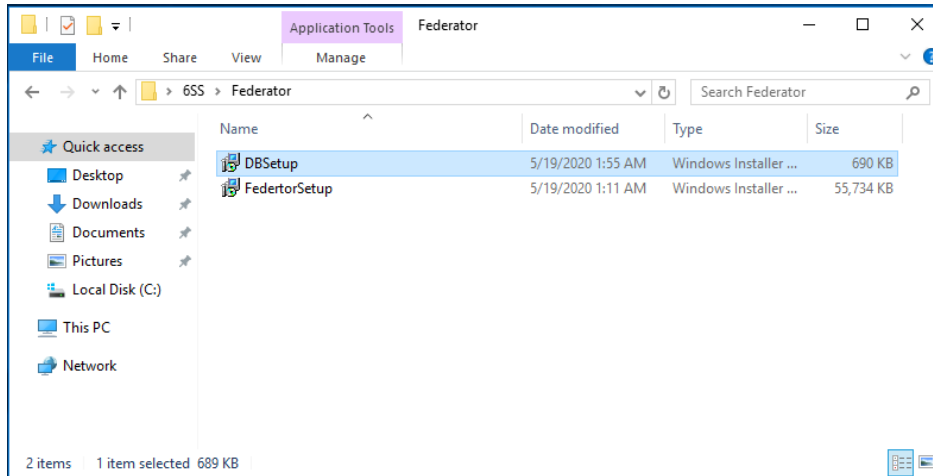


FIGURE 2: OPEN FEDERATOR SETUP LOCATION

The DBSetup wizard opens, click **Next** to continue.

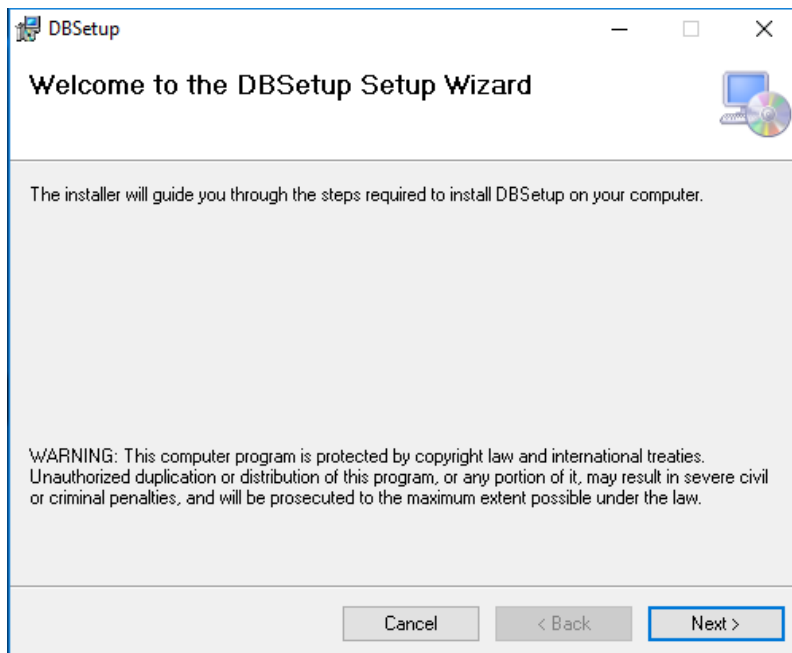


FIGURE 3: DBSETUP WELCOME PAGE

Enter the SQL server name of the headquarter site and click **Next**.

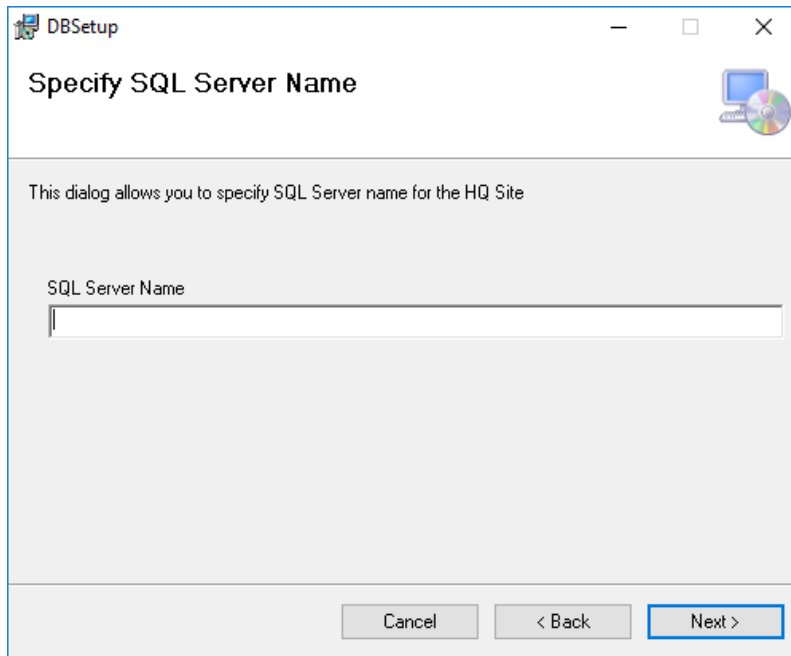


FIGURE 4: SPECIFY SQL SERVER NAME

Choose the installation folder path and click **Next**.

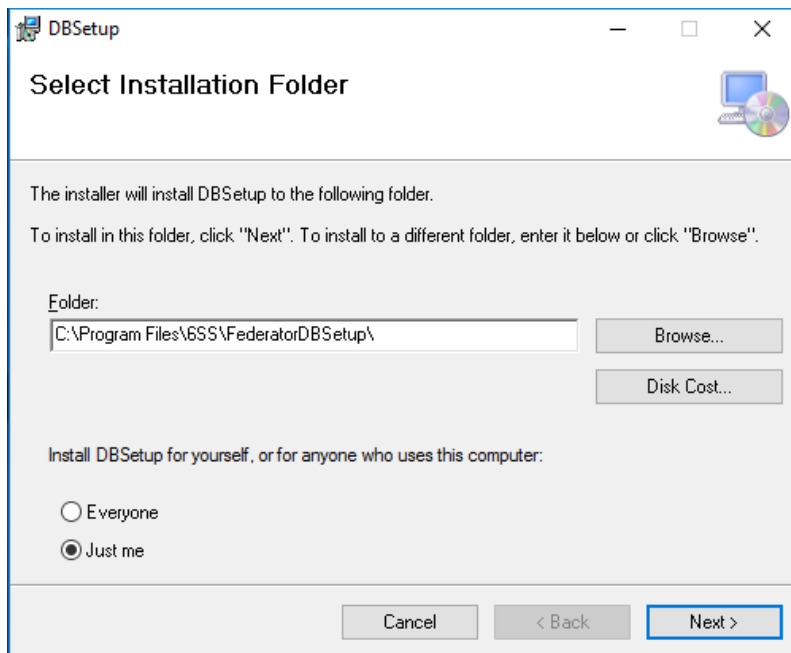


FIGURE 5: SELECT DBSETUP INSTALLATION FOLDER

Click **Next** to start the installation. Once successfully installed click **Close**.

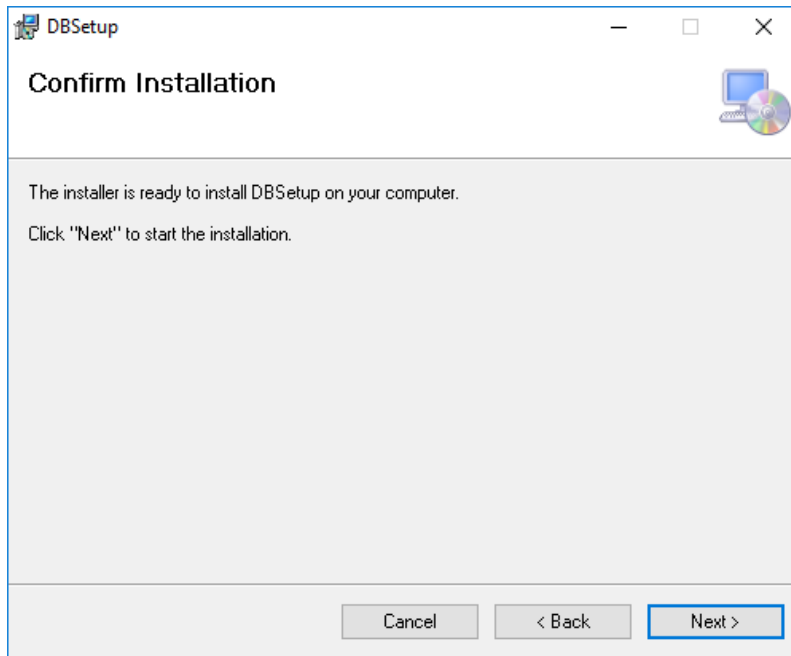


FIGURE 6: CONFIRM DBSETUP INSTALLATION

3.2 Federator Plugin Setup

Double click on **FederatorSetup** (as in **Figure 2**), and click **Next** to continue.

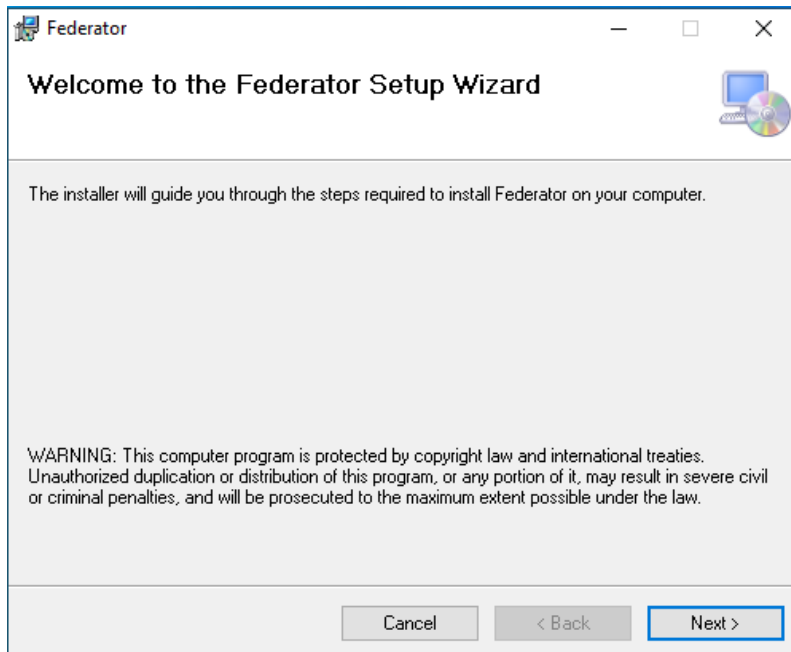


FIGURE 7: FEDERATORSETUP WELCOME PAGE

Click **Next** to continue the installation in the default folder “C:\Program Files\Milestone\MIPPlugins\Federator” as shown below.

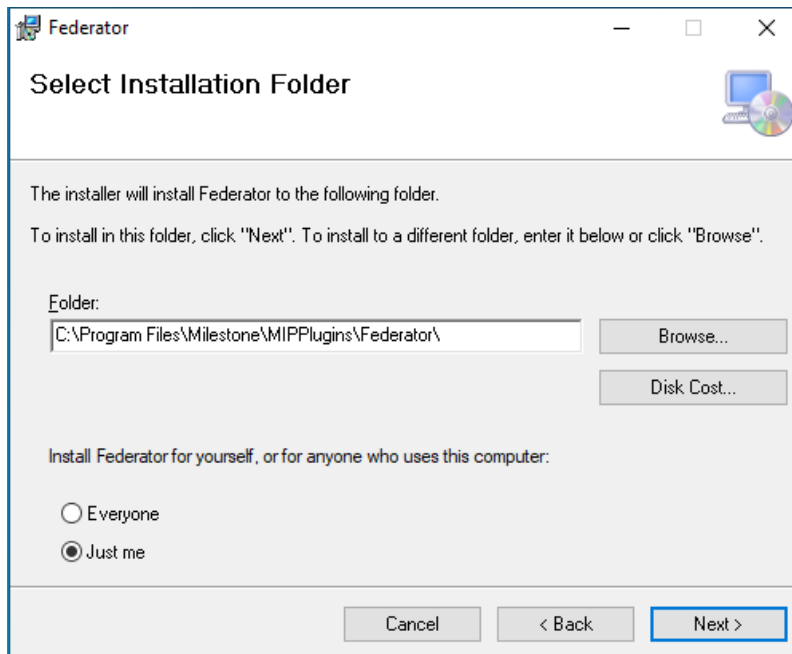


FIGURE 8: SELECT FEDERATOR PLUGIN INSTALLATION FOLDER

Confirm the Installation by clicking **Next** and check that the plugin has been successfully installed.

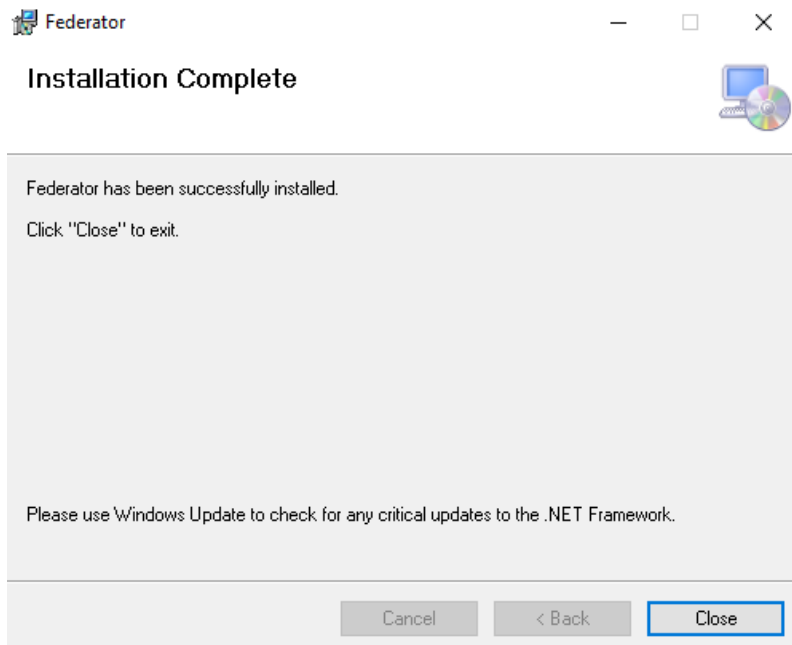


FIGURE 9: INSTALLATION COMPLETE

4. MANAGEMENT CLIENT MIP PLUG-IN

Open the main server where Milestone XProtect Management Client is installed. In the *Site Navigation* Pane, open the **MIP Plug-ins** node. Then select **FEDERATOR**. Click on the **FEDERATOR** sub-node. Use the **Navigation** pane under the Federator plugin to check all the functionalities.

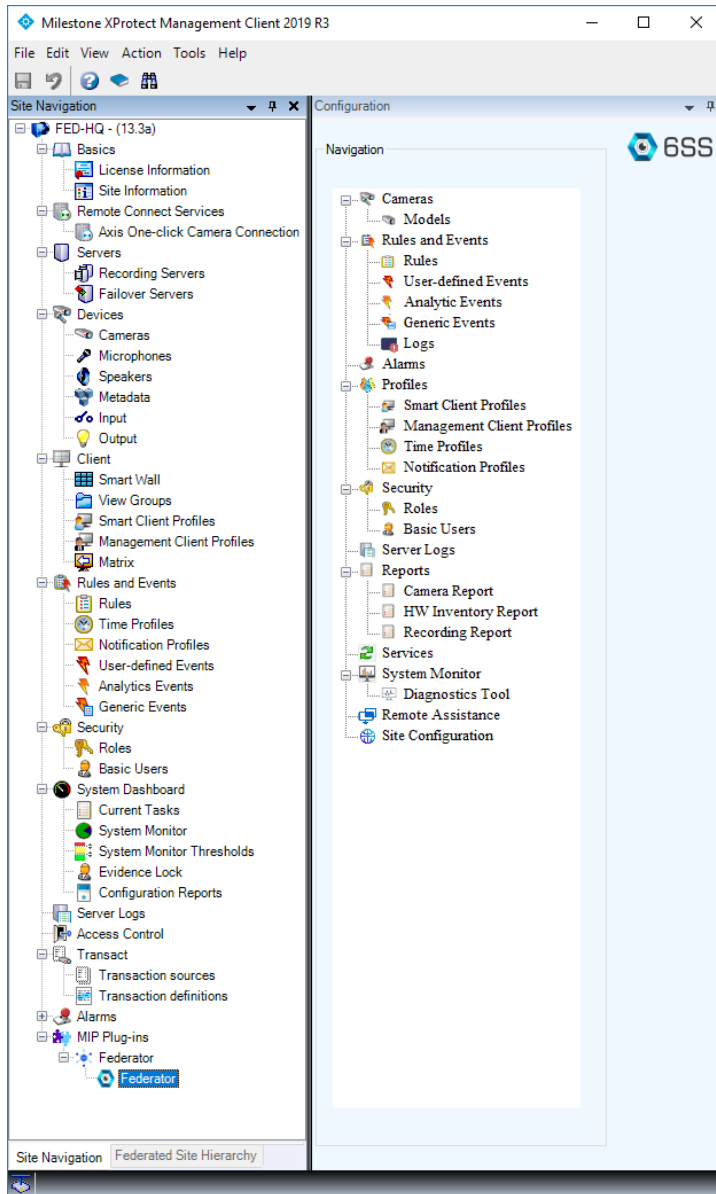


FIGURE 10: XPROTECT MANAGEMENT CLIENT- FEDERATOR PLUGIN

4.1 Camera Model Settings

Start first by adjusting the settings needed for each device model. In this example the frame per second is set to 15.

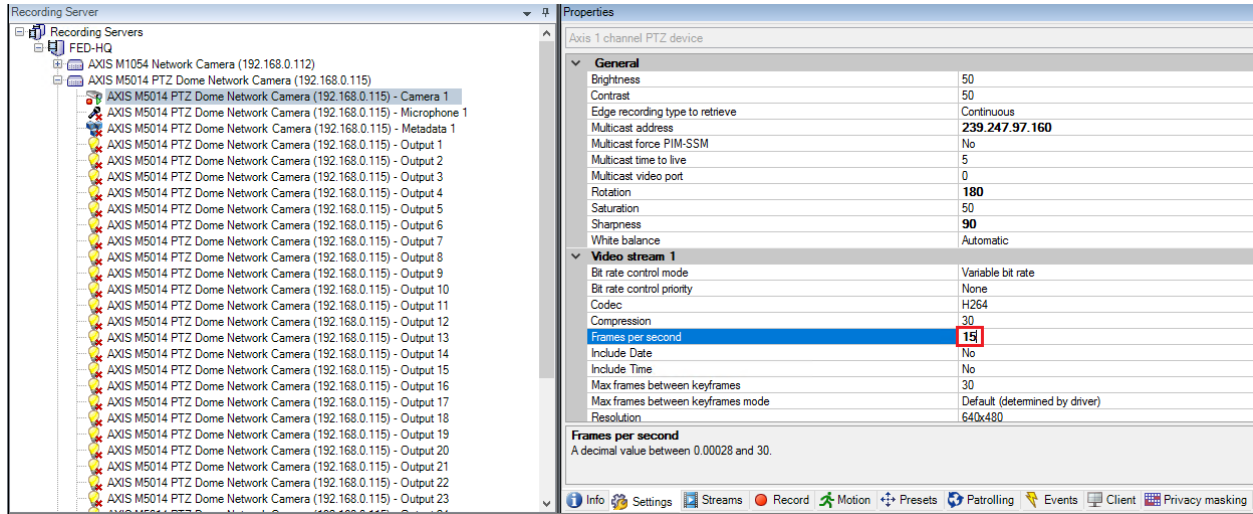


FIGURE 11: DEVICE SETTINGS

Once the settings are properly set, navigate to Camera- Models as shown in **Figure 12**, right click on the device model, choose **Update Settings** and select the target sites as in **Figure 13**. Once successfully updated, navigate to these sites and notice the settings (in this example 15 frame per second) are change for the devices with the chosen model.

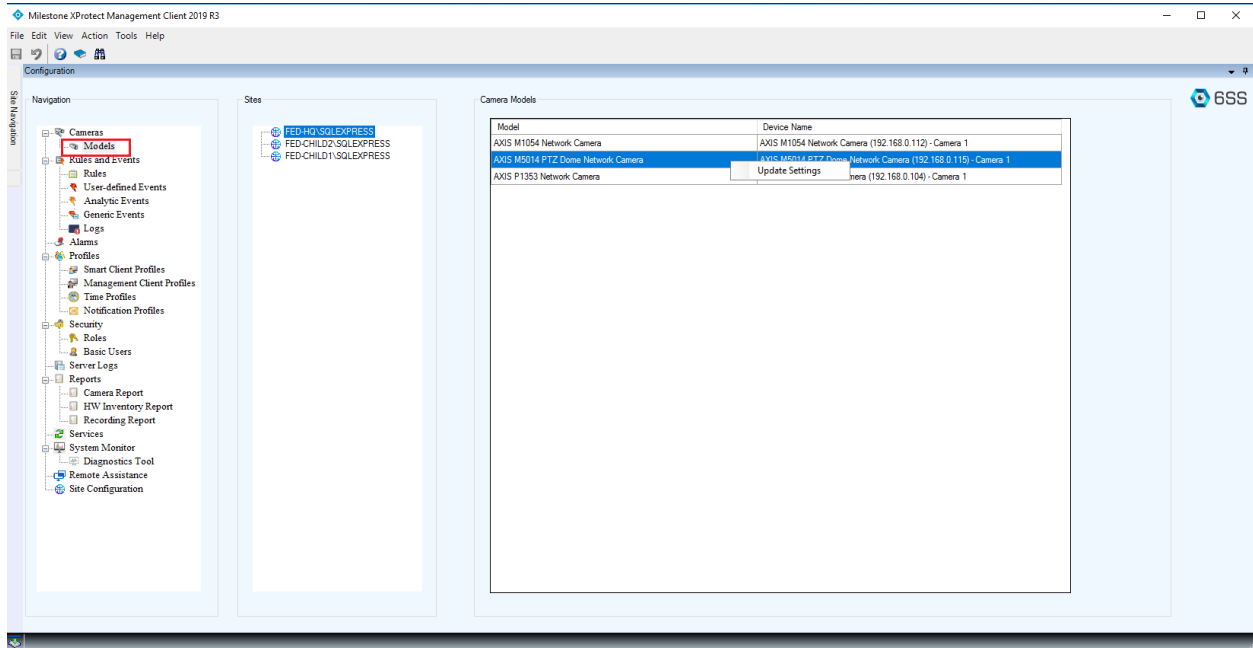


FIGURE 12: MODELS SUB NODE

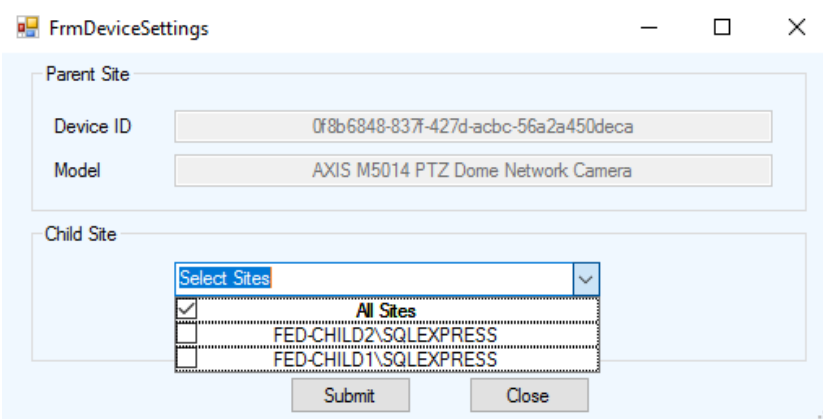


FIGURE 13: UPDATE DEVICE MODEL SETTINGS

4.2 Rules/Events/Alarms

Under **Rules and Events** nodes, you can view the added rules, events (user-defined, analytic, and generic) for each federated site as shown in the below **Figure 14** figure. You can as well change the rule name, description, and status (active/inactive) for each site.

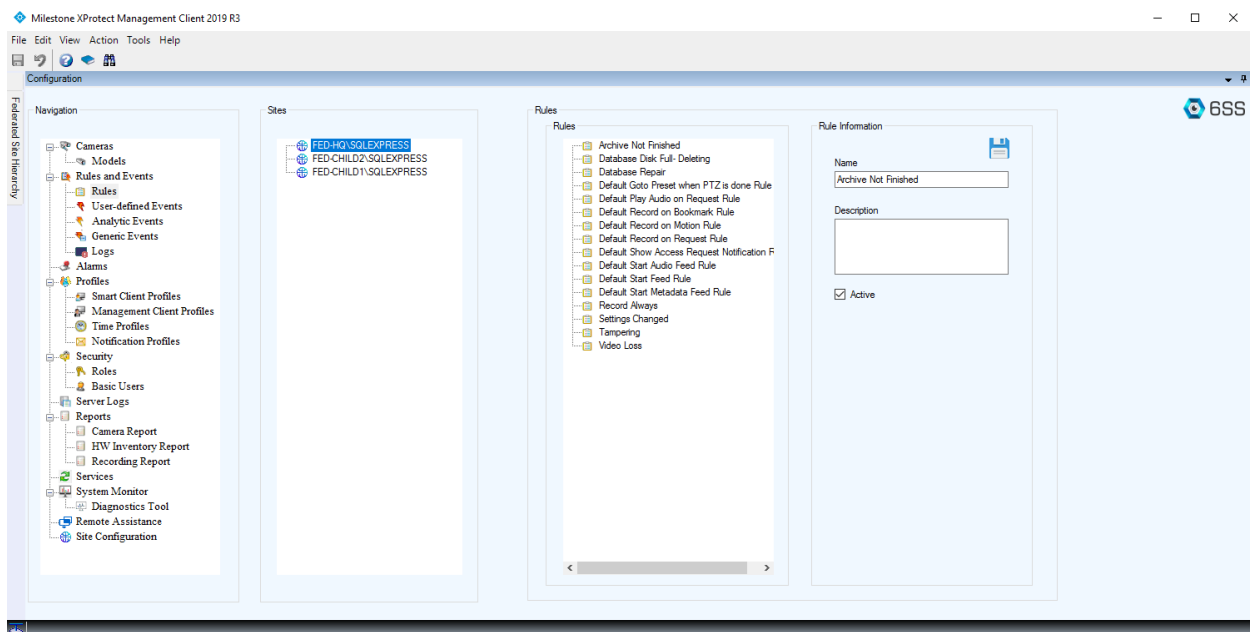



FIGURE 14: RULES AND EVENTS

To copy a rule to a federated site, right click on a rule and choose  **Copy Rule...**

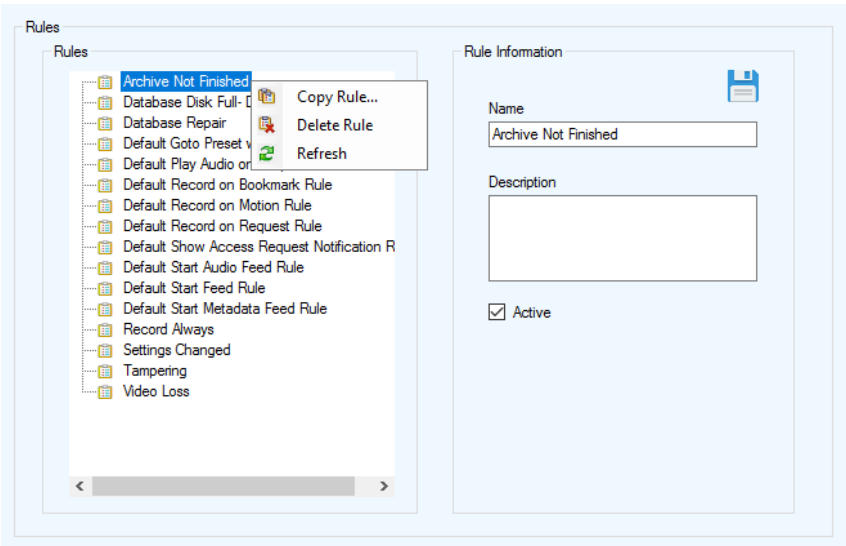


FIGURE 15: RULE CONTEXT MENU

In the copy rule window, select the federated sites/All sites for this rule to be added for and click **Submit**.

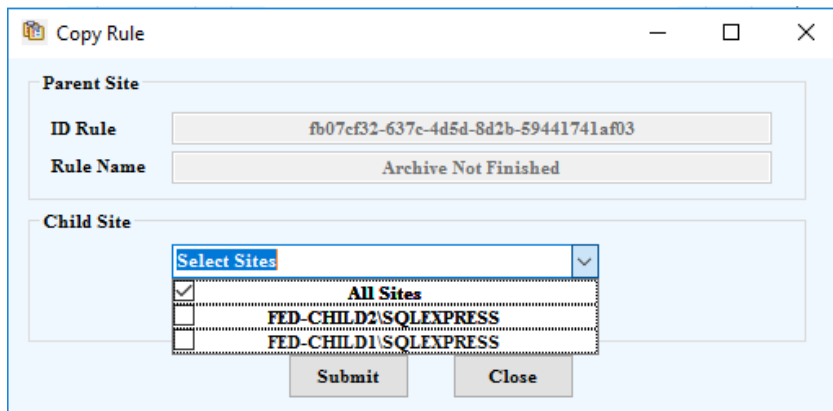


FIGURE 16: COPY RULE

A pop up message appears to show the creation status of the rule. In **Figure 17**, the rule was successfully created for all the previously selected site(s). In case of any failure, you can check the rule logs as shown in **Figure 18**.

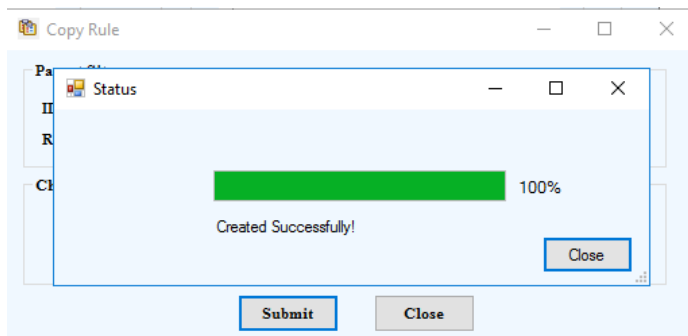


FIGURE 17: RULE CREATION STATUS

Under **Logs**, you can track the creation status of rules, events and alarms, and easily check the reason for failure (Machine is down, or SQL Service not running).

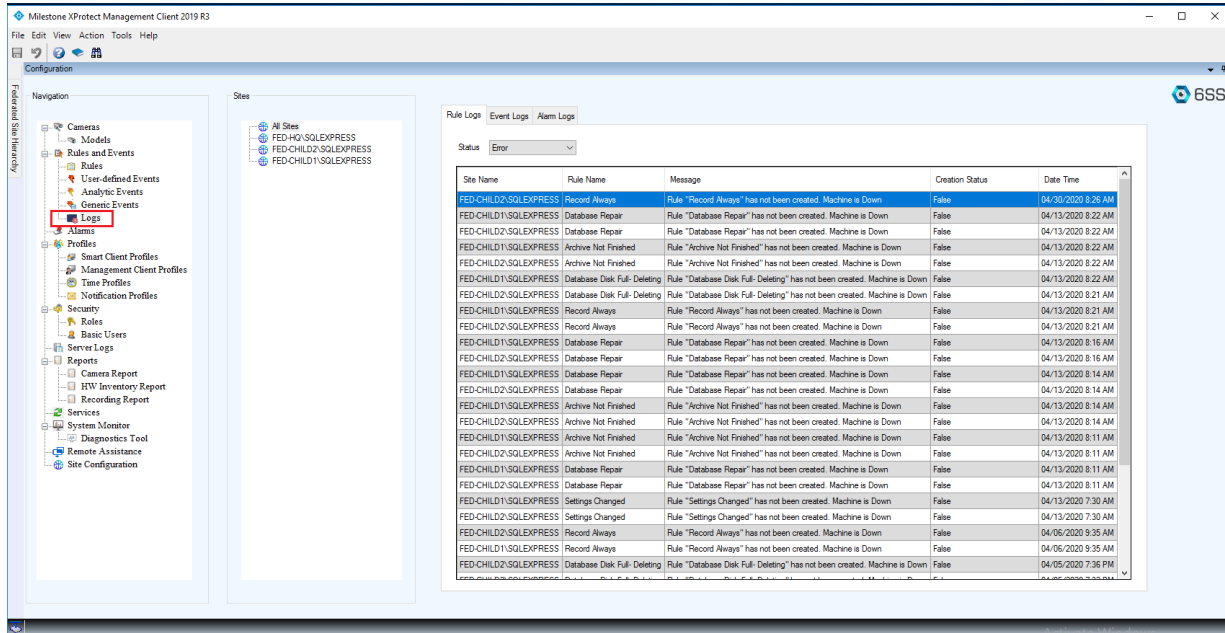


FIGURE 18: RULE/EVENT/ALARM LOGS

4.3 Server Logs

Under **Server Logs** node, you can easily check the log file (system, audit, rule-triggered logs) related to each federated site and from a selected period of time as shown in the below figure, as well as to export the filtered log list either as pdf or excel format.

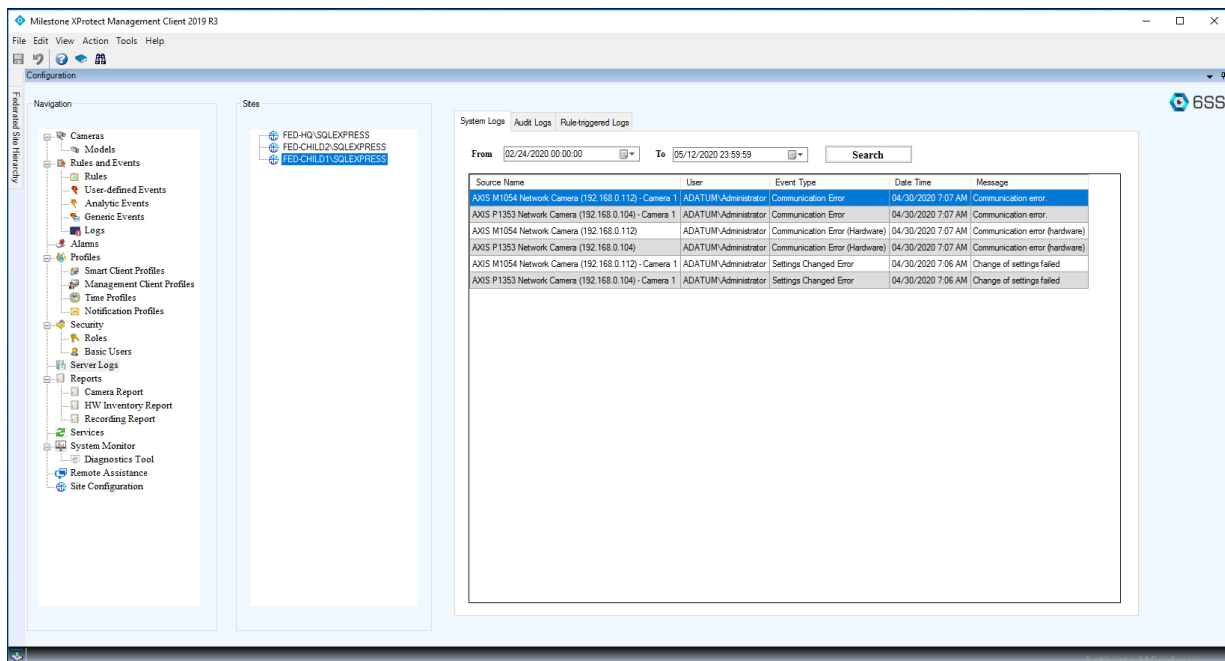
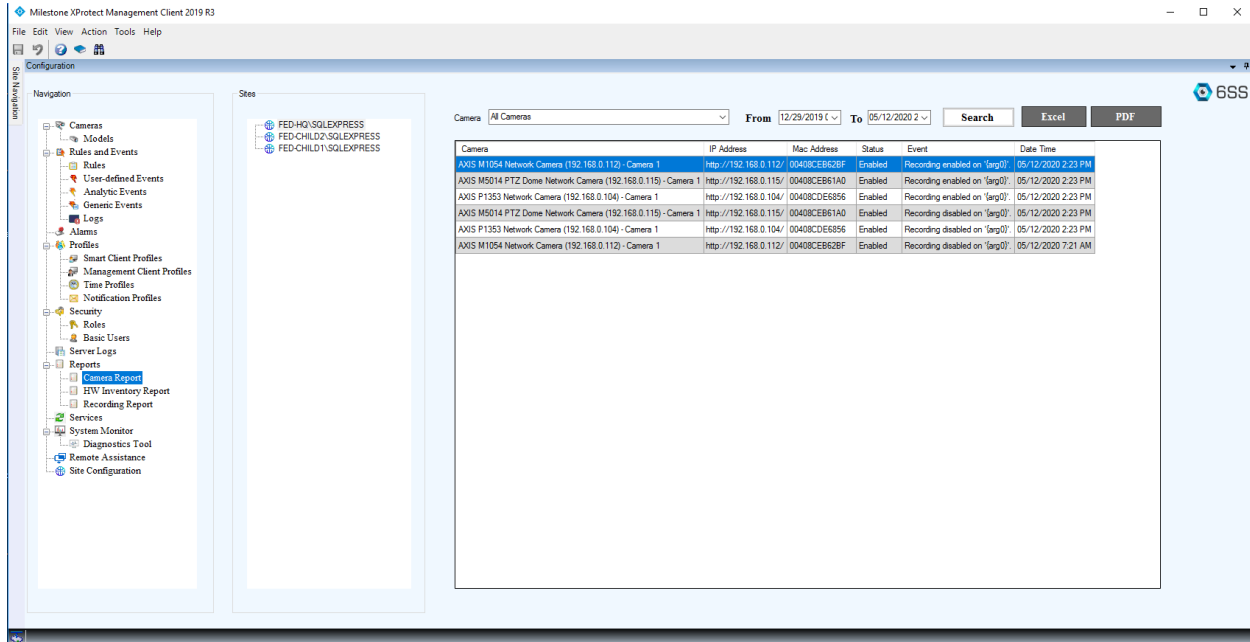


FIGURE 19: SERVER LOGS

4.4 Reports

Camera Report

Under **Camera Report**, select the federated site and the relevant camera to check its recording status and the event occurred on this camera (recording enabled/disabled) at a specific date and time.



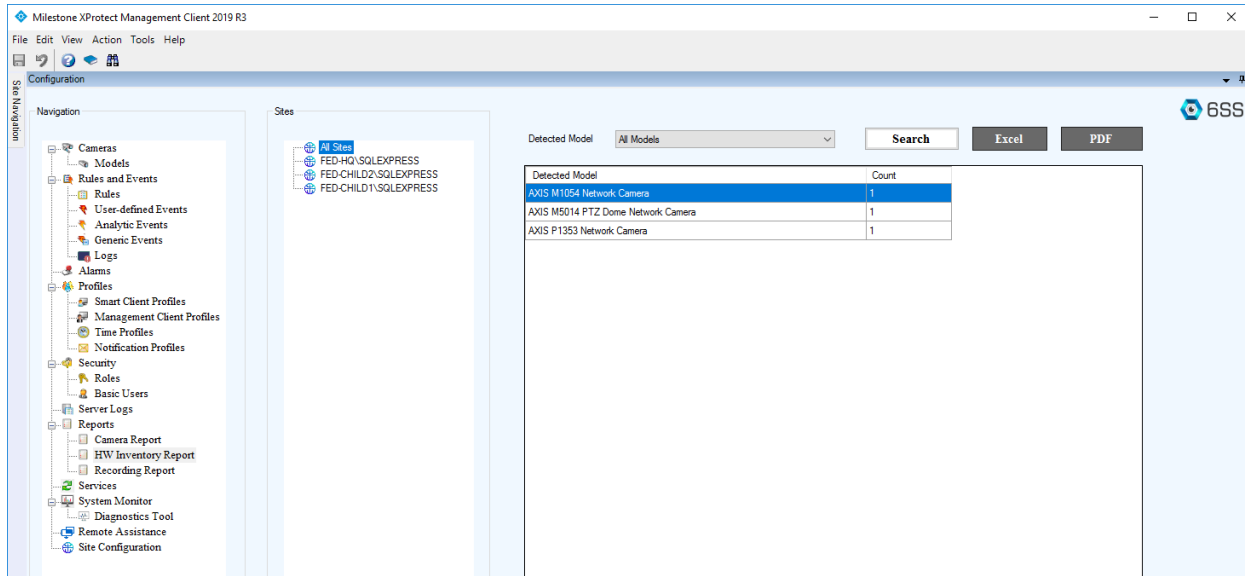
The screenshot shows the Milestone XProtect Management Client 2019 R3 interface. The left sidebar contains a navigation tree with the following items: Cameras, Models, Rules and Events, Rules, User-defined Events, Analytic Events, Generic Events, Logs, Alarms, Profiles, Smart Client Profiles, Management Client Profiles, Time Profiles, Notification Profiles, Security, Roles, Basic Users, Server Logs, Reports, Camera Report (selected), HW Inventory Report, Recording Report, Services, System Monitor, Diagnostics Tool, Remote Assistance, and Site Configuration. The main area displays the 'Camera Report' table, which includes columns for Camera, IP Address, Mac Address, Status, Event, and Date Time. The table lists several cameras and their recording status changes.

Camera	IP Address	Mac Address	Status	Event	Date Time
AXIS M1054 Network Camera (192.168.0.112) - Camera 1	http://192.168.0.112/	00408CEB62BF	Enabled	Recording enabled on 'arg0'	05/12/2020 2:23 PM
AXIS M5014 PTZ Dome Network Camera (192.168.0.115) - Camera 1	http://192.168.0.115/	00408CEB61A0	Enabled	Recording enabled on 'arg0'	05/12/2020 2:23 PM
AXIS P1353 Network Camera (192.168.0.104) - Camera 1	http://192.168.0.104/	00408CEB6856	Enabled	Recording enabled on 'arg0'	05/12/2020 2:23 PM
AXIS M5014 PTZ Dome Network Camera (192.168.0.115) - Camera 1	http://192.168.0.115/	00408CEB61A0	Enabled	Recording disabled on 'arg0'	05/12/2020 2:23 PM
AXIS P1353 Network Camera (192.168.0.104) - Camera 1	http://192.168.0.104/	00408CEB6856	Enabled	Recording disabled on 'arg0'	05/12/2020 2:23 PM
AXIS M1054 Network Camera (192.168.0.112) - Camera 1	http://192.168.0.112/	00408CEB62BF	Enabled	Recording disabled on 'arg0'	05/12/2020 7:21 AM

FIGURE 20: CAMERA REPORT

HW Inventory Report

This report allows users to check all available models for all or single site(s).



The screenshot shows the Milestone XProtect Management Client 2019 R3 interface. The left sidebar contains a navigation tree with the following items: Cameras, Models, Rules and Events, Rules, User-defined Events, Analytic Events, Generic Events, Logs, Alarms, Profiles, Smart Client Profiles, Management Client Profiles, Time Profiles, Notification Profiles, Security, Roles, Basic Users, Server Logs, Reports, Camera Report, HW Inventory Report (selected), Recording Report, Services, System Monitor, Diagnostics Tool, Remote Assistance, and Site Configuration. The main area displays the 'HW Inventory Report' table, which includes columns for Detected Model and Count. The table lists three models: AXIS M1054 Network Camera, AXIS M5014 PTZ Dome Network Camera, and AXIS P1353 Network Camera, each with a count of 1.

Detected Model	Count
AXIS M1054 Network Camera	1
AXIS M5014 PTZ Dome Network Camera	1
AXIS P1353 Network Camera	1

FIGURE 21: HW INVENTORY REPORT

Recording Days Report

Easily check the device recording status, database on which the devices are being recorded, as well as the storage path, recording start date, the recording hours till date, and the retain hours.

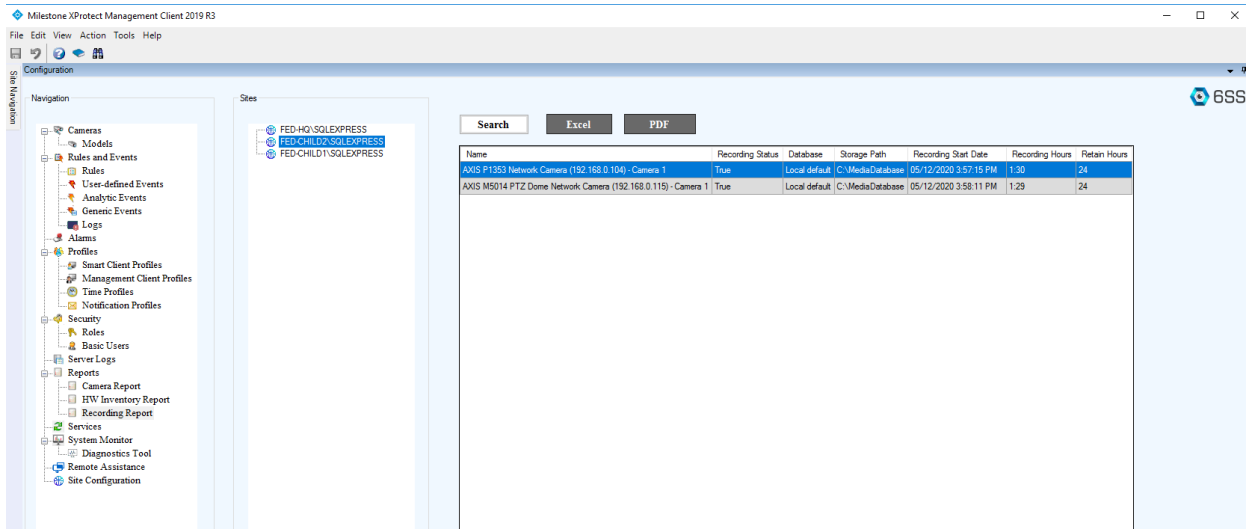


FIGURE 22: RECORDING DAYS REPORT

4.5 System Monitor

Under **System Monitor**, you can easily view and check the system status. Select **Site Overview** under chart type to check the sites' state, the programs installed, and the services configured with their related addresses.

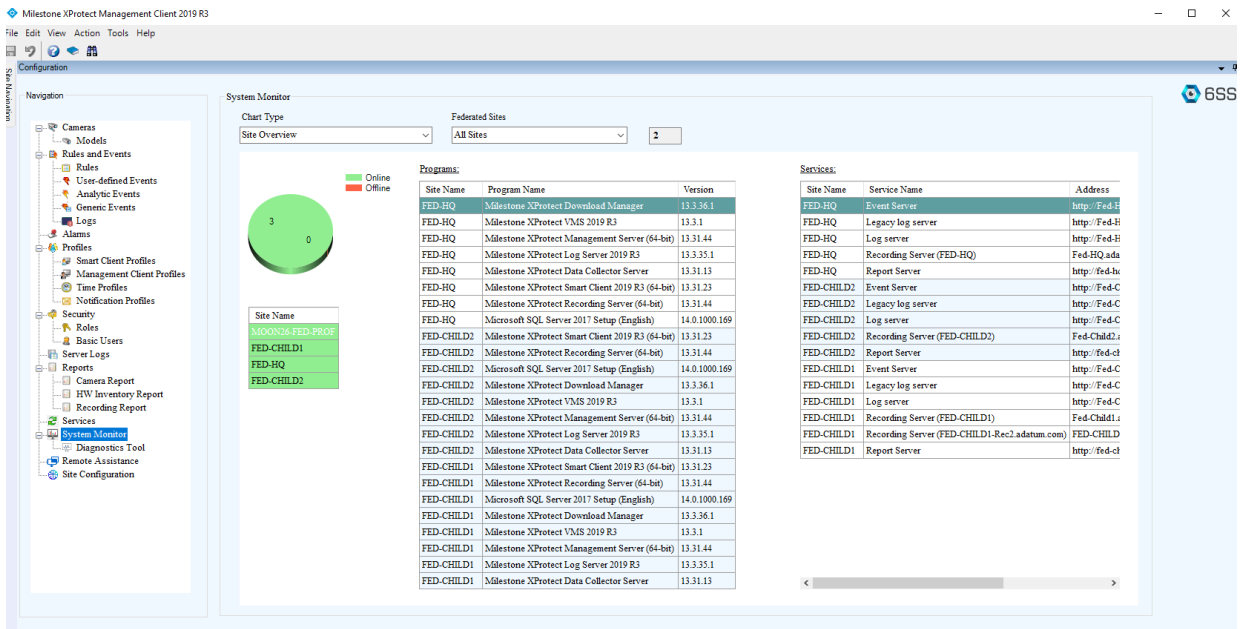


FIGURE 23: SYSTEM MONITOR