



Milestone Certified Solution



6SS LPR

Date certified: 2018-11-20

Table of Contents

About 6SS	3
About Milestone Systems.....	3
Executive Summary	4
Certified Products	4
Test Setup	5
Features Tested Described	7
System Requirements	7
Conclusion	8
Resources.....	8

GENERAL DISCLAIMER:

All information, to include but not limited to, documentation, configuration calculations, installation and trouble-shooting advice, consultancy and support services which may be provided within this document is delivered 'as is' without warranty of any kind. Unless otherwise agreed in writing between you and Milestone Systems A/S or its Affiliates, you, as the recipient, agree to assume the entire risk as to the results and performance achieved or not achieved by reliance on such information. Milestone Systems A/S and its Affiliates shall, to the extent allowed by law, assume no liability for the Recipient's reliance on such information and disclaims all warranties, whether express or implied, including but not limited to, the implied warranties of merchantability, fitness for a particular purpose, title and non-infringement, or any warranty arising out of any proposal, specification or sample with respect to the document. Furthermore, Milestone Systems A/S and its Affiliates shall not be liable for loss of data, loss of production, loss of profit, loss of use, loss of contracts or for any other consequential, economic or indirect loss whatsoever in respect of delivery, use or disposition from the content of this document.

About 6SS

6SS is a technology consultancy and training firm specialized in Video Surveillance and Security Systems, geared to provide full design, solution architecture, project management, professional services and customized software development & integration. In addition, we have our in-house License Plate Recognition Software 6SS LPR (Global license plate recognition software for traffic and access control).

Founded in 2013 in Minnesota, United States of America, operating in North America, Middle East and Africa.

In the MEA Region 6SS is the exclusive training partner and professional services provider for Milestone Systems and Parking Spotter and the official training partner and professional services provider for Technoaware, OODA by Axone Systems and Prysm Software.

We have all the experience needed in systems design, integration, troubleshooting and use across practically every vertical you can name, we have the knowledge and experience to help you ensure that you get the most out of your security and surveillance investment.

More than 100 clients have put trust in the solution we design, supply and install. From consultancy and Trainings to services (Start to Finish), we have become part of the success of our customers daily operations and transaction decisions, contributing significantly to their bottom line.

Organizations around the world, whether public or private, and even individuals, need subject matter experts who can fill in the inevitable gaps in their own knowledge as systems technologies improve and become more complex. We are those Subject Matter Experts, working hard every day to exceed the expectations of our customers and partners.

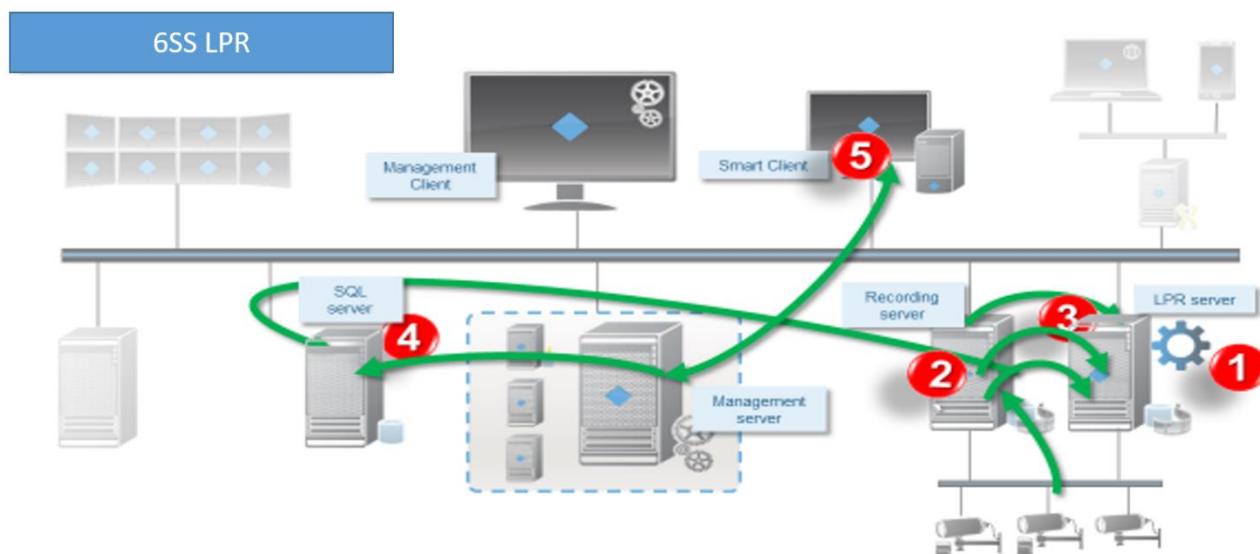
About Milestone Systems

For over 15 years, Milestone Systems has been the consistent global leader in providing easy-to-use, powerful, *open platform* IP video surveillance & security software that is being used in more than 200,000 installations, worldwide. *Open platform* means you have much more choice in third-party hardware and software components. With literally the largest ecosystem of third-party hardware and software solutions in the world, Milestone's video and security management solution the obvious choice whether you want the best available system components, or the most affordable or a combination of both. Milestone gives you the ability to tailor your system to *your* priorities and needs, all while obtaining the lowest cost of ownership as you continue to meet those needs because you can maintain, expand, update and improve your system from the largest range of choices available, both today and tomorrow.

Visit www.milestonesys.com for more information

Executive Summary

6SS LPR is a global license plate recognition software for traffic and access control, regardless of traffic speed. Our solution is fully integrated with Milestone XProtect Management Client components, processing live in real time in Smart Client.



1. LPR Server listens to all LPR query streams
2. LPR Cameras send video streams to the LPR recording servers from all LPR licensed cameras
3. Multi streaming and multi-threading occurs between Recording servers and LPR Servers for all LPR licensed cameras
4. Results are stored in SQL or any other Database, and trigger alarms if so desired.
5. Results are also sent to the Smart Client display

Certified Products

- 6SS LPR Version 5.1.9
- Milestone XProtect Corporate 2018 R2
- Milestone XProtect Smart Client 2018 R2

The 6SS LPR is compatible with Milestone XProtect VMS version 2016 or above

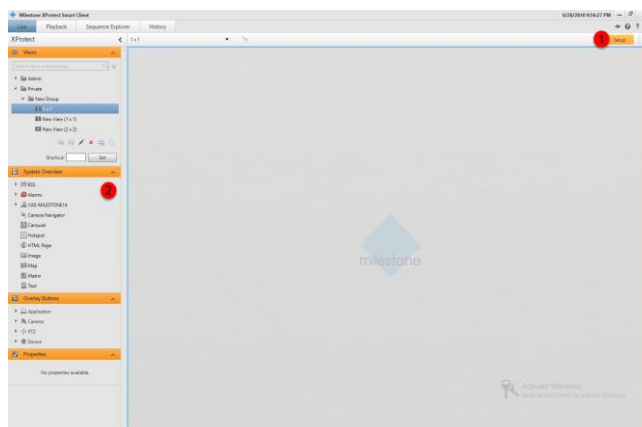
Test Setup

Activating Stream View

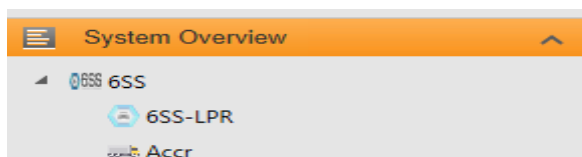
- Live Mode

Below are the steps to enable live monitoring inside the MSC

1. Click **Setup**

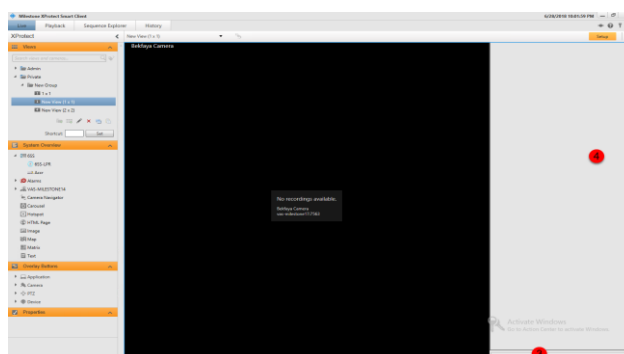


2. Expand **6SS**, Drag **6SS-LPR** and drop it on the empty view on the right

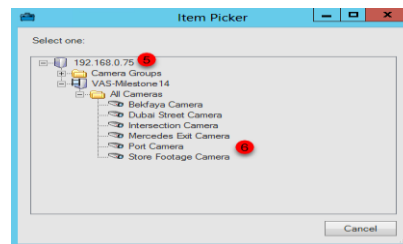


3. After obtaining the above screen, or a similar one depending on the number of live cameras you desire to view. Click on **Select Camera**

Note: The camera selection button is only visible in the Setup Mode (in case it wasn't visible immediately, try toggling the setup mode)

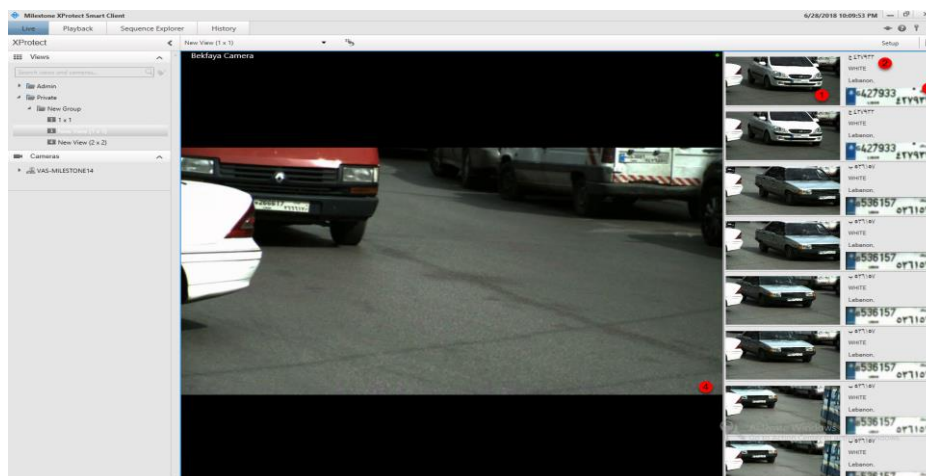


4. This brings you to a screen with the available Milestone servers and cameras, which you can expand to find the desired camera



5. Click on the camera name
6. The camera Live Streaming will start, and if the camera is activated the LPR the results will start to appear on the right

Once the camera and the processing are active, you will have something similar to the below view

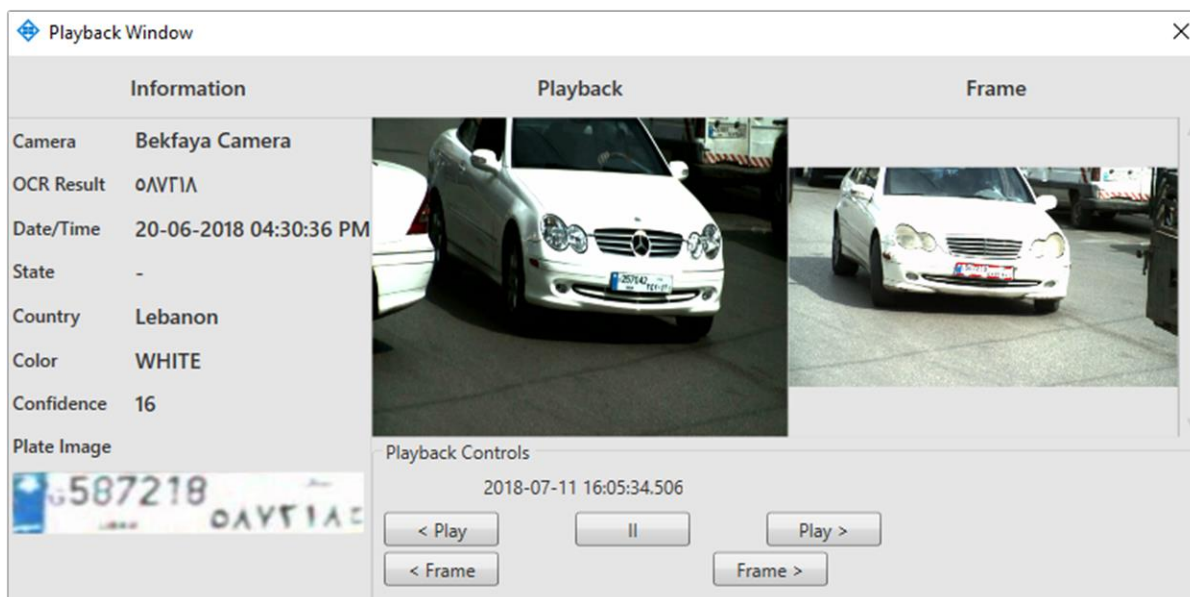


You can view the following information:

1. The full frame received when the plate was recognized
2. The recognized license plate's text, color, and country of origin
3. The cropped plate
4. The camera live stream view

Note: in this scenario the Duplicate filter isn't activated on the recognition server, this causes the system to have more than 1 result for the same plate.

The information is live streamed after being processed from the recognition server. Double clicking on any of the displayed results, opens a new window with the ability to view more detailed information along with the playback option as shown below.



- Playback Mode

Playback viewing is the same as live mode viewing using the Milestone default playback mode with the recording time selector. As the playback time changes, the results displayed on the right are the Latest based on the selected time, in other words, if the playback is left running normally the displayed results will be displayed as if it is live processing.

All simulated video streams used in this test were configured at 30 frames per second (FPS). All video streams were configured to use the H.264 video codec. The image resolutions used in this test included the following:

Features Tested Described

- Fully integrated with All Milestone XProtect versions
- Supports all cameras supported by Milestone VMS (approximately 6700 camera types)
- One click data Export (PDF, Excel)
- Scheduled reports (Daily, Weekly, Monthly)
- Alarming capabilities (Email, SMS)

System Requirements

- Windows OS 7 or above
- Milestone Smart Client (2016 or above)
- 6SS-LPR Management (V5.1.5 or above)
- ARH Carmen FreeFlow (version 7.3.11 or above)

Conclusion

6SS LPR by 6SS reads license plates from many image sources remarkably fast and with the highest recognition accuracy in its class. It offers country-independent recognition of not only of Latin characters, but also Arabic, Cyrillic, Chinese, Korean, Thai and many more, as well as reflective, non-reflective, personalized and special interest plates that are typical in many U.S. states.

Regardless of country, state or province, plate or character type differences, 6SS LPR adapts to environmental changes for reliable 24/7 operation. It is fast and easy to use with any hardware, and compatible with any image source (analog, digital, still images MJPEG video streams). It operates equally well on Windows or Linux platforms. 6SS development libraries allow flexible integration through their SDK, and in server mode 6SS LPR is able to perform parallel processing and handling of unlimited camera inputs.

Resources

Headquarter Number +1 (651) 233-0977

MEA Number +961 6 740281

Email info@6ss.co

Product Links

<http://www.6ss.co/Services.php?id=4>

<https://www.youtube.com/watch?v=0Dz7pgWPb8A&t=3s>

<https://www.youtube.com/watch?v=pnzF8UUkNCo&t=13s>