



FACIT IDENTITY CLOAK

USER MANUAL

VERSION 1.0

15/05/2018

INTRODUCTION TO THIS GUIDE

This guide provides a comprehensive overview of the Facit Identity Cloak application. It is a step by step instruction guide for the installation, setup and user interface of our video analytics software.

INTENDED AUDIENCE

This manual is intended for users seeking information on the installation, features and user interface of the Facit Identity Cloak application.

Table of Contents

- FACIT IDENTITY CLOAK 1
- USER MANUAL 1
- INTRODUCTION TO THIS GUIDE 2
- INTENDED AUDIENCE 2
- 1. INTRODUCTION TO FACIT IDENTITY CLOAK 4
 - 1.1. FEATURES 4
- 2. Installation Guide 5
 - Step 1: Download..... 5
 - Step 2: Install 5
- 3. User Guide 9
 - 3.1. Enter license key..... 9
 - 3.2. Load Video 10
 - 3.2.1. Clip Video 11
 - 3.3. Tag & Track..... 12
 - 3.4. Zoom 15
 - 3.5. Preview..... 16
 - 3.6. Export 17
- 4. FURTHER DETAILS 18

1. INTRODUCTION TO FACIT IDENTITY CLOAK

Under the new GDPR regulation, (Chapter 3, Articles 13, 14 and 15), any person whose image is recorded on a CCTV system has a right to seek and be supplied with a copy of their own personal data from the footage. However, the identity of any other individuals who also feature in any part of that footage needs to be protected when the recording is shared with a third party.

The data collected through CCTV surveillance cameras, identity based physical access data, biometric information and personal information are fully governed by the GDPR regulations from 25 May 2018.

Facit Identity Cloak application is a fully featured tool to hide identities of people in CCTV videos, which can be further shared with any third party.

1.1. FEATURES

Facit Identity Cloak is a user-friendly video analytics tool, designed to automatically cloak identities of people in a CCTV recorded video. Following are the main features of this software

- **Automatic Face Blur**
- **Full Body Blur**
- **Blur/Unblur a specific person by identifying his track**
- **Zoom region in a video sequence between a defined time slot**
- **Display recorded time stamp**
- **Manual Blur/Unblur**
- **Clip Video**
- **Preview Video before exporting**

2. Installation Guide

This section provides a step by step approach to download and installation the Facit Identity Cloak application.

STEP 1: DOWNLOAD AND REGISTER

To get the application installation file please visit the following link

<http://identitycloak.facitdatasystems.com/>

After you enter your specifics on the registration page, you will be redirected to a download link from where you will be able to download the application installation file. You will also be provided a license key, depending upon the package that you have selected.

STEP 2: INSTALL

Launch the setup file.

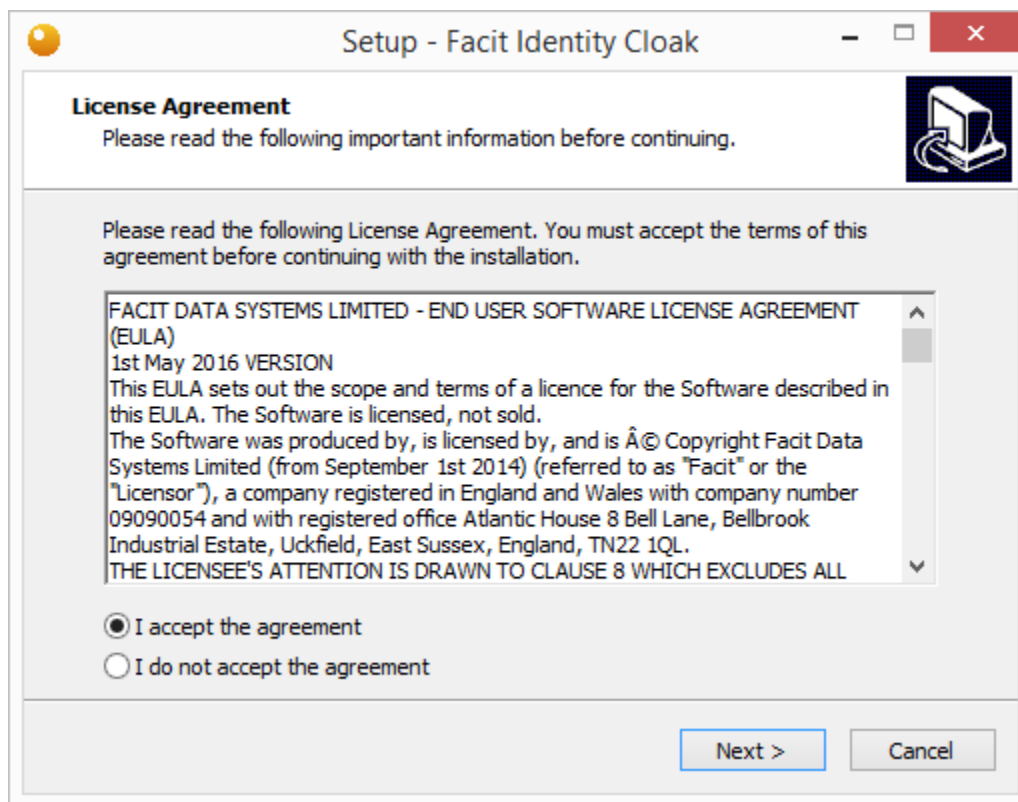


Figure 1: License Agreement

Read the license agreement and Select **I accept the agreement** to click next

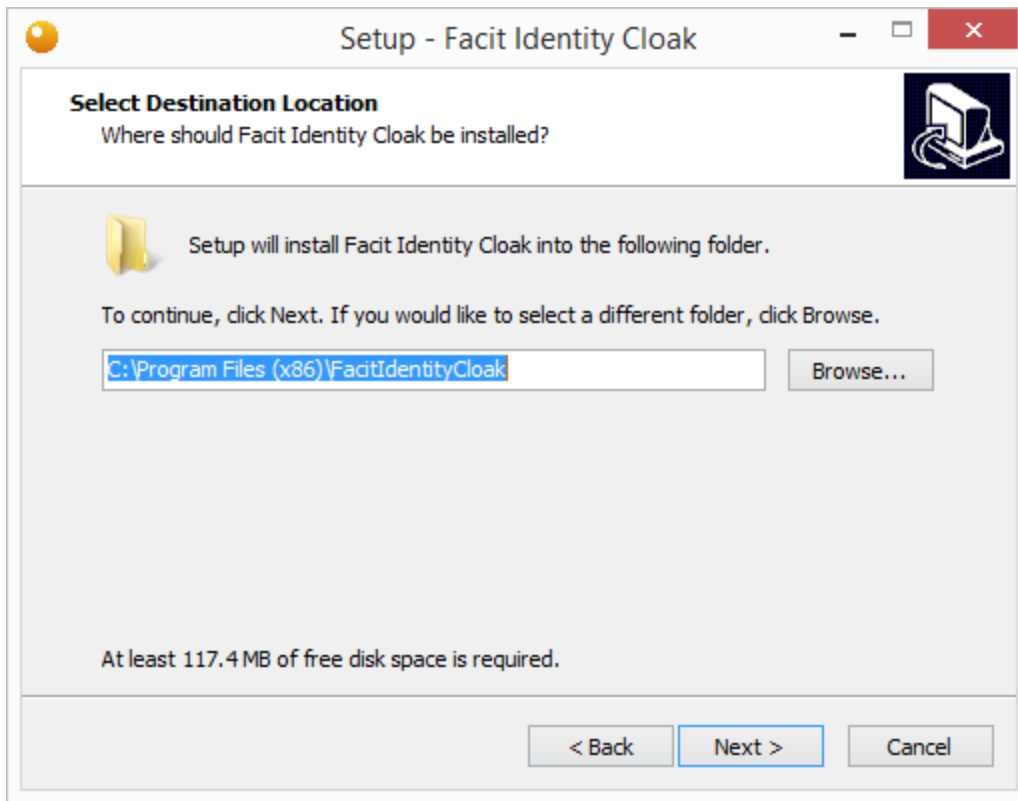


Figure 2 : Installation Location

Select the installation location and click next.

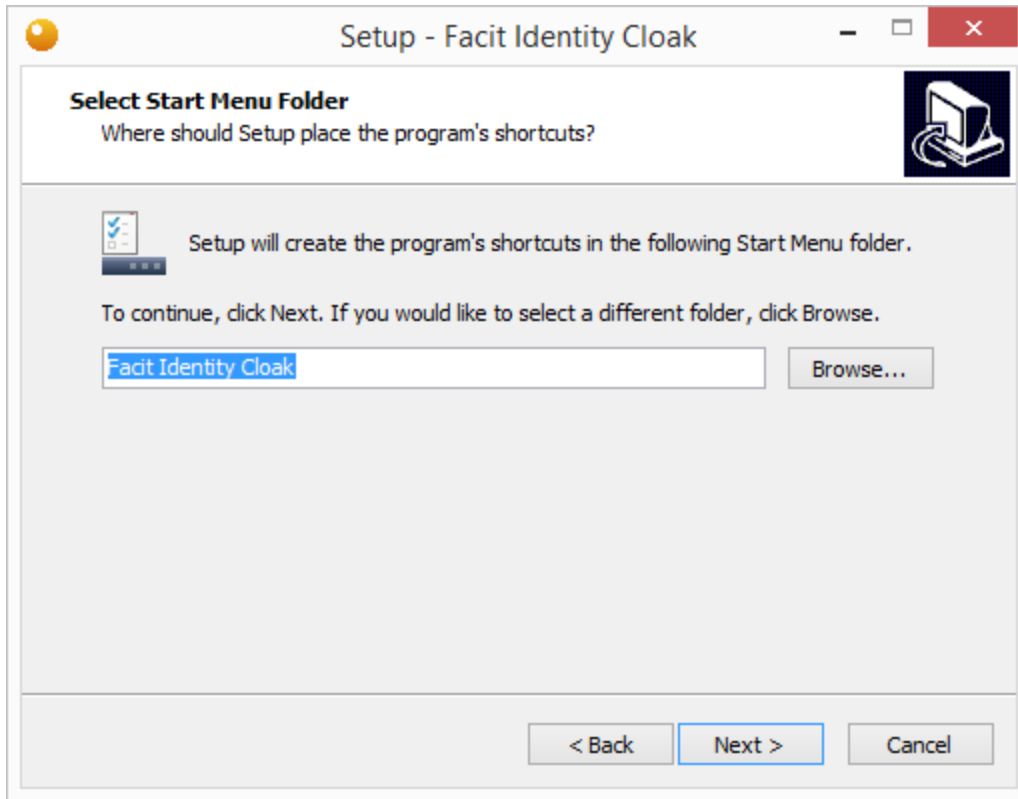


Figure 3: Start Menu Folder

Enter the name of start menu folder name and click next.

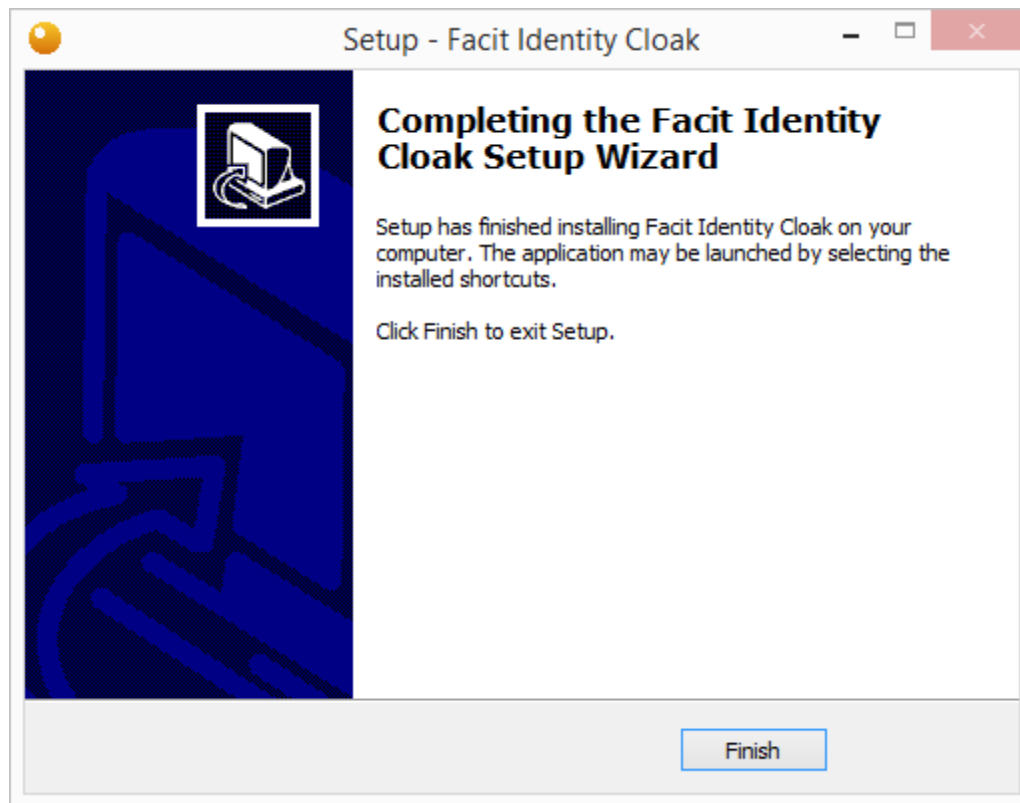


Figure 4 : Installation Complete

Your Installation is complete now. Click on **Finish** to close this window. A shortcut link will be created on your desktop. You can launch the application from there.

3. User Guide

This section contains a comprehensive overview on how to use this application. Click on Facit Identity cloak shortcut created on your desktop to launch the application. To blur a video, you must go through the following steps.

- Import Video
- Clip Video
- Tag and Track person to selectively blur or unblur
- Zoom
- Preview
- Export

3.1. ENTER LICENSE KEY

If you are using the application for the first time you will be prompted for a license key.

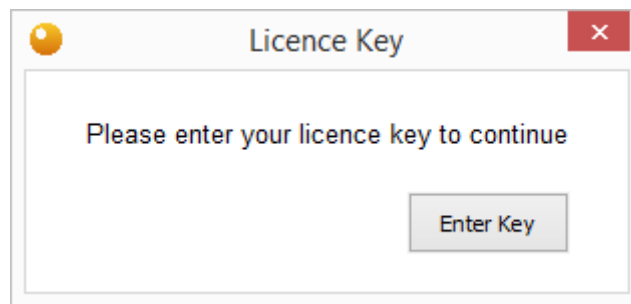


Figure 5 : Enter Licence Key

Click on Enter Key

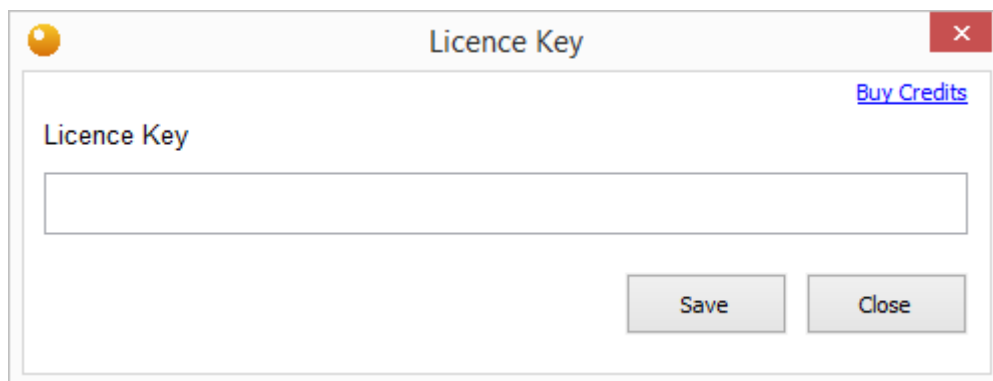


Figure 6: Save License Key

Enter the license key that was provided to you when you downloaded the application and click **Save**. Your PC must be connected to the internet for the license verification.

3.2. LOAD VIDEO

Select the video to be processed either by drag/drop or by clicking the Import button. On the top of the window you will see an activity chart. This chart shows your current progress status and the remaining steps that you will go through to complete the cloaking progress.

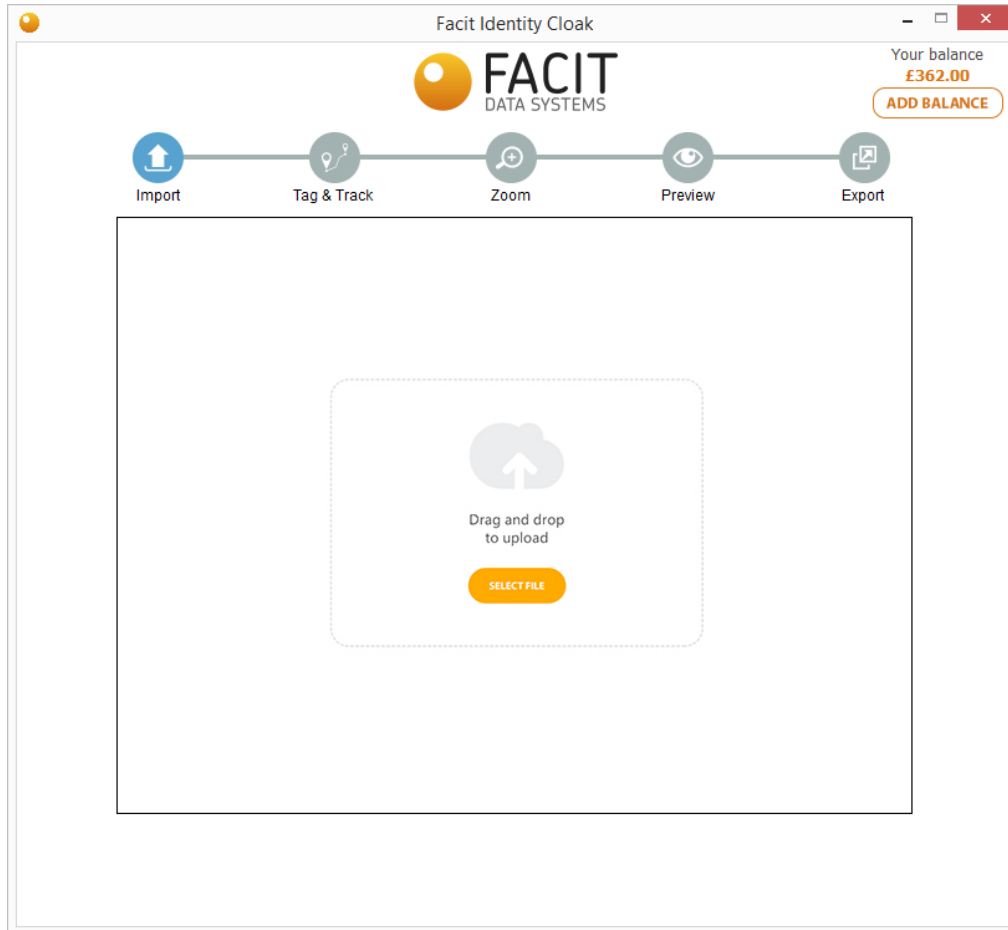


Figure 7 : Load Video

When you load a video a query window will appear which will ask you to allow for codec conversion

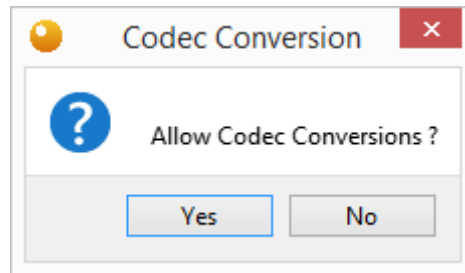


Figure 8 : Allow Codec Conversion

For some video formats we need to convert them to another format which is friendly to our application. For this purpose, the application may sometime require codec conversion.

3.2.1. CLIP VIDEO

After the video is loaded you will get the following window as shown in Figure 9. Select the starting point and ending point by moving the progress bar below the video and click on **clip**. Enter the time stamp of the actual time when this video was recorded. This time stamp will appear on top of the video.

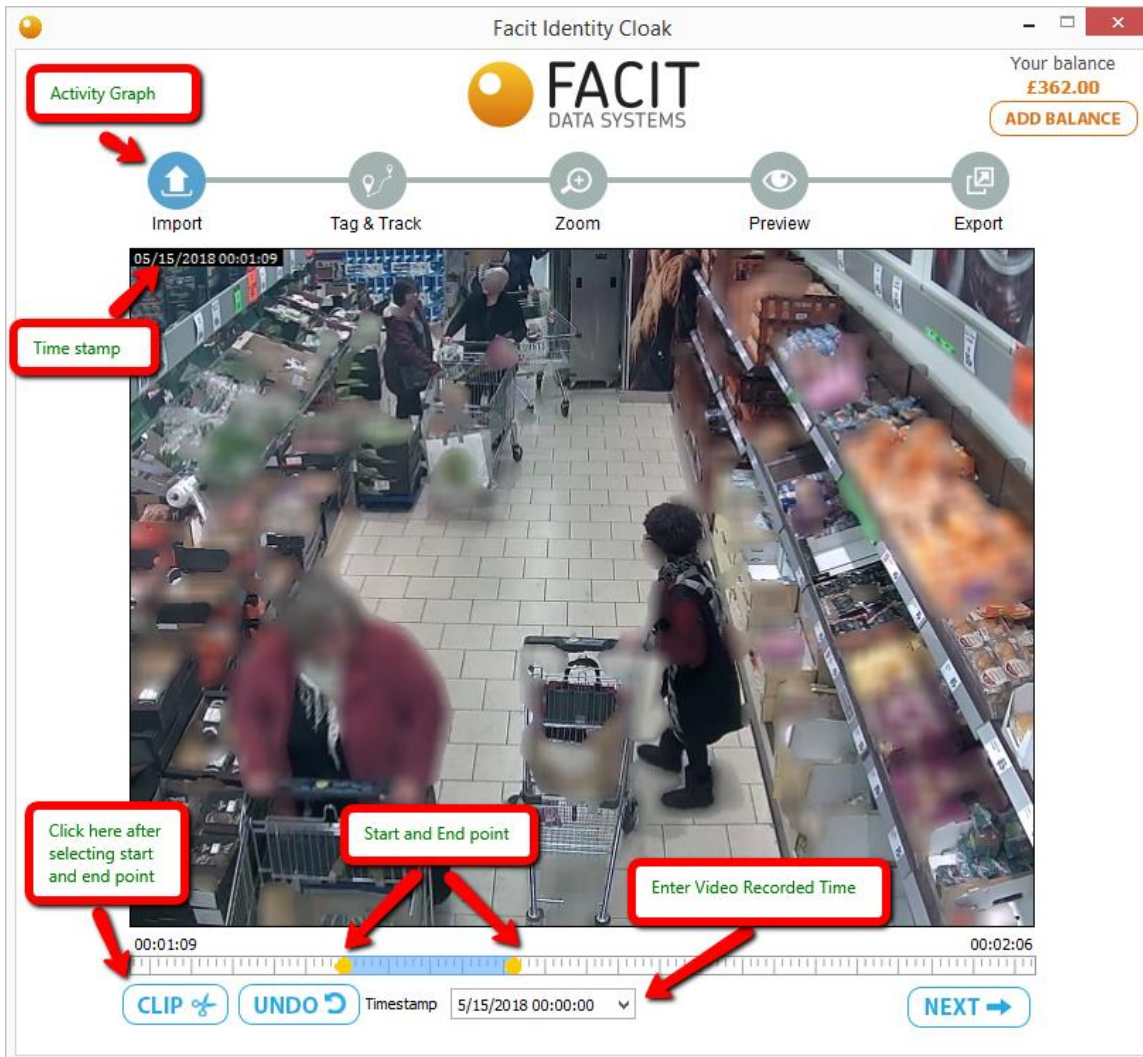


Figure 9: Import window

Click on next after entering time and clipping the video.

3.3. TAG & TRACK

After clicking next you will be directed to the Tag & Track process and a new side window will appear as shown in Figure 10. In this stage a certain person can be tagged along his path in various key frames by clicking or drawing a region across him. This selected track can be blurred or unblurred according to the requirement.

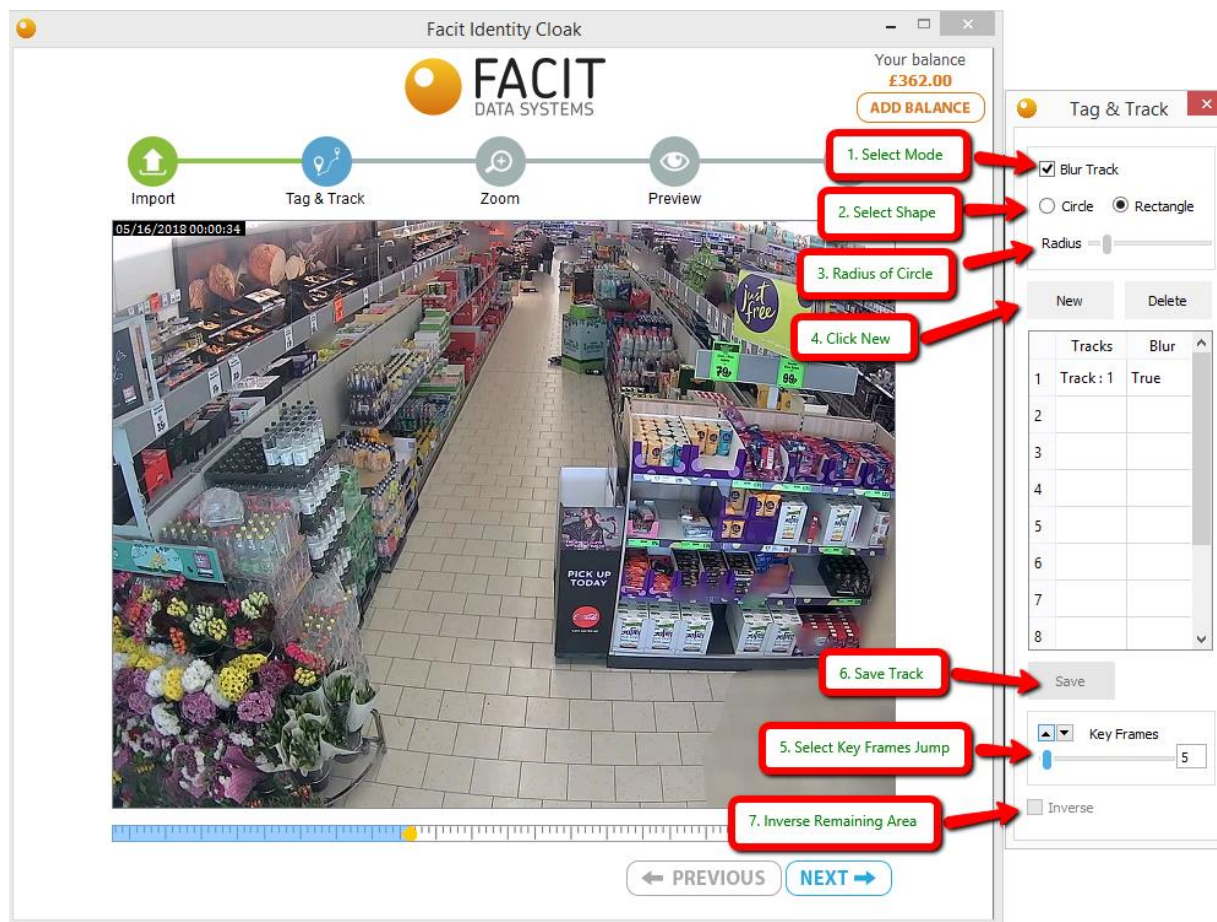


Figure 10 : Tag & Track window

Following are the steps of the tag and track process

Step 1: Mode Selection

In the first step you choose what you want to do with the track. If you want to blur the track check the **Blur Track option**, or if you want to unblur this part and keep the remaining part blurred, keep it unchecked.

Step 2: Inverse Selection

At the bottom of the Tag & Track window there is an **Inverse** check button. If you select this option, the track will be blurred and rest of frame will be clear. If you do not select this option and select the **Blur Track option** from top, the track area will be blurred specifically and automatic face or full body blur will be applied to the remaining region. The full body blur option is in preview stage.

Step 3: Shape Selection

Select the shape of your object. For faces, the recommended shape is circle and for full body use rectangle. If you select circle, you will be able to change the radius of from the **Radius slider**. In case of rectangle you can select the region by drawing a rectangle.

Step 4: Key Frames

Key frames define the frame jumps between two tag points. It is recommended to keep its value low for precise object selection.

Step 5: Draw Track

After you complete the above selections, now you are ready to draw the track. Click on **New Button** to start drawing. During this process you select a region in your key frames on which you want to apply the blur or unblur. After you select a region in the key frame, you will be taken to the next key frame automatically. Repeat this process until you select the person in all key frames. Click **Save** when the process is complete. Saved tracks can be reviewed by selecting the track from table as shown in Figure 11.

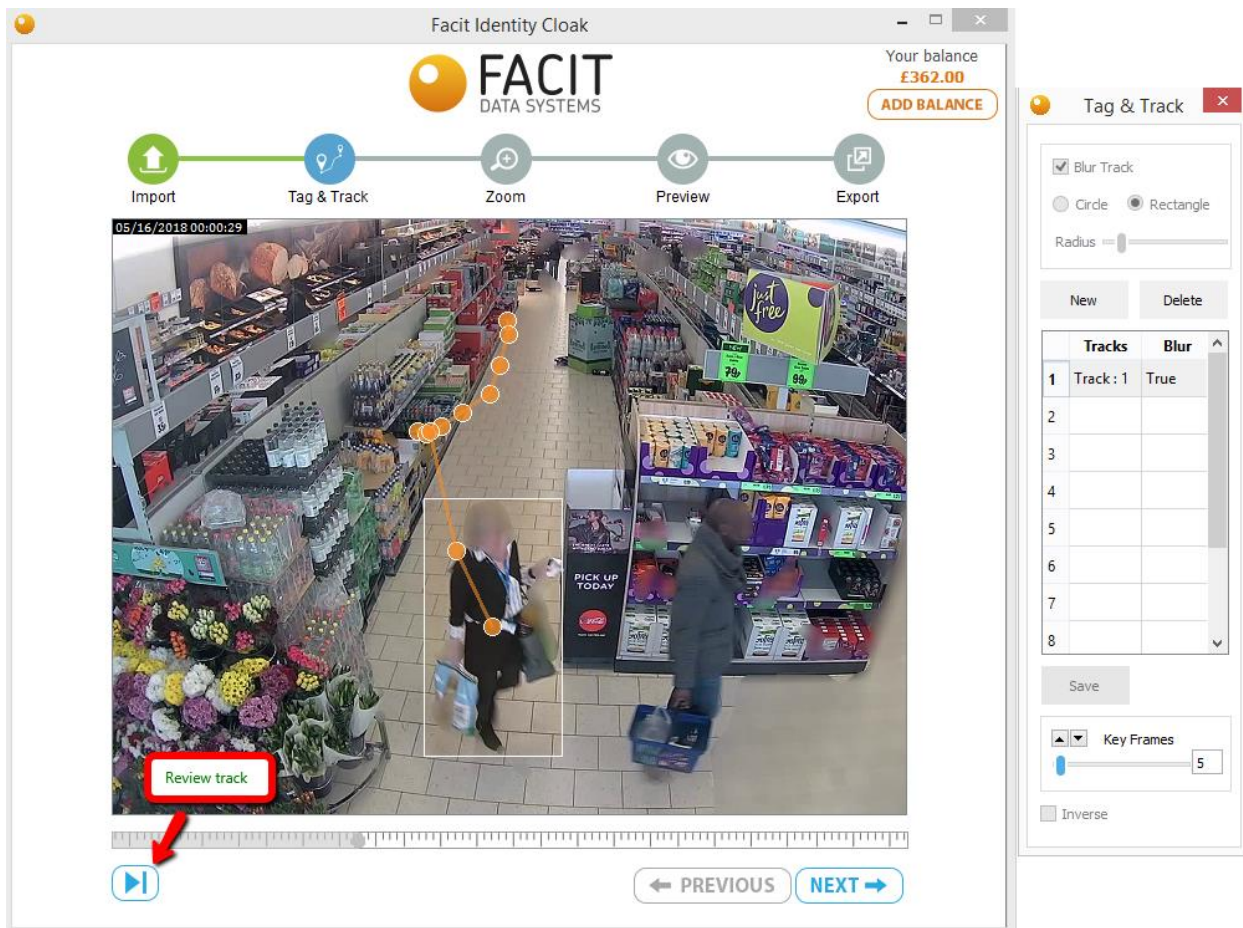


Figure 11 : Showing track drawn

Click next when the Tag & Track process is complete.

3.4. ZOOM

In this step, you can zoom a certain region in video for any certain time frame. Following are the steps

- i. Select Zoom Level
- ii. Draw Region
- iii. Select Start and End Point
- iv. Save

These steps are shown in Figure 12.

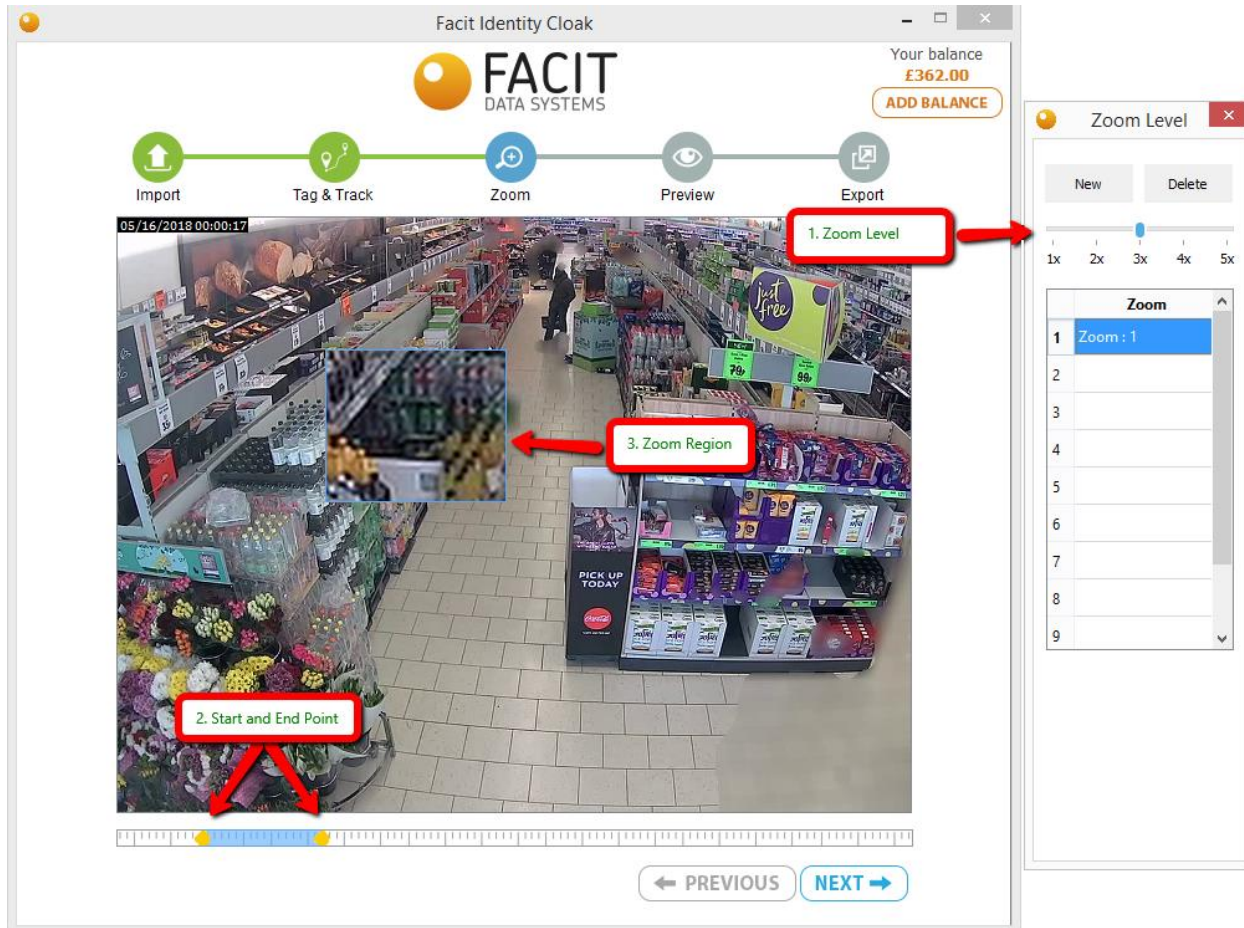


Figure 12: Zoom Section

Multiple areas can be zoomed at different time spans. Click after completing the zoom process and wait for the **create preview process** to complete.

3.5. PREVIEW

Please refer to the following image for this section.

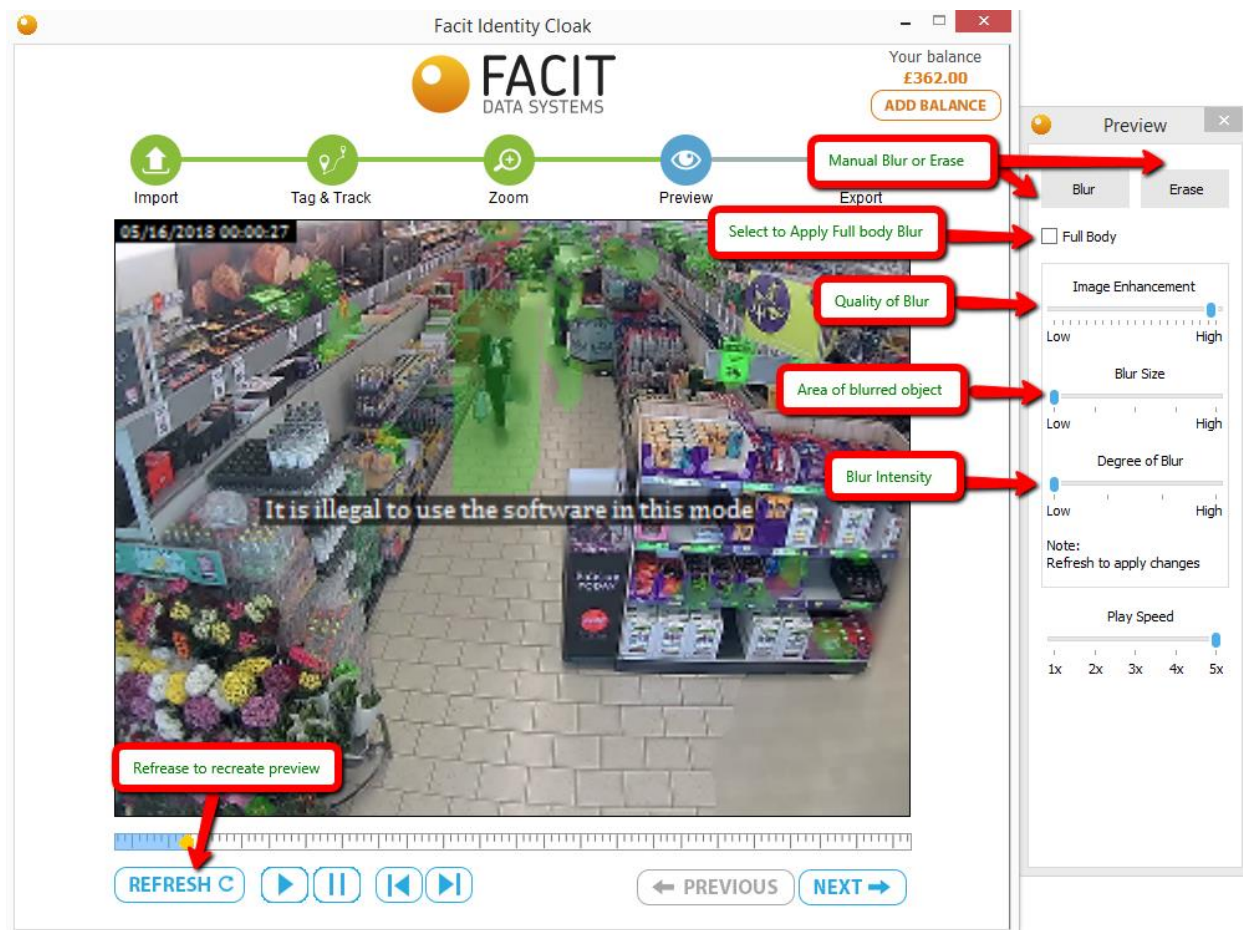


Figure 13 : Preview window

The preview stage contains the following features

1. View video before exporting

Video can be played to view the output before exporting. The preview comes with the Green semi-transparent shading in the areas to be blurred.

2. Apply manual blur

Manual blur or unblur can be applied on the current frame by selecting blur or erase button.

3. Select Full Body Blur

By default, faces are blurred, however by selecting the **Full Body** option, full body blur can be applied. Please note that the preview will be recreated to complete this process.

4. Alter the quality of masking

By increasing the **image enhancement**, the blur quality is improved however, some unrequired regions may also get blurred. So, it has a trade-off. It is recommended to keep it at a moderate level.

5. Increase or Decrease Blur Size

By increasing the **Blur Size** level, area of blurred object is increased. It is recommended to keep it at a moderate level.

6. Increase or Decrease Blur Intensity

Blur intensity can be increased or decreased by increasing or decreasing **Degree of Blur** slider.

Please note that the preview has to be recreated after applying changes from the **Refresh** button.

Click Next to move to the export window after finalizing everything.

3.6. EXPORT

Browse to the location where you want to save file, select the name of file and click next to generate the final video.

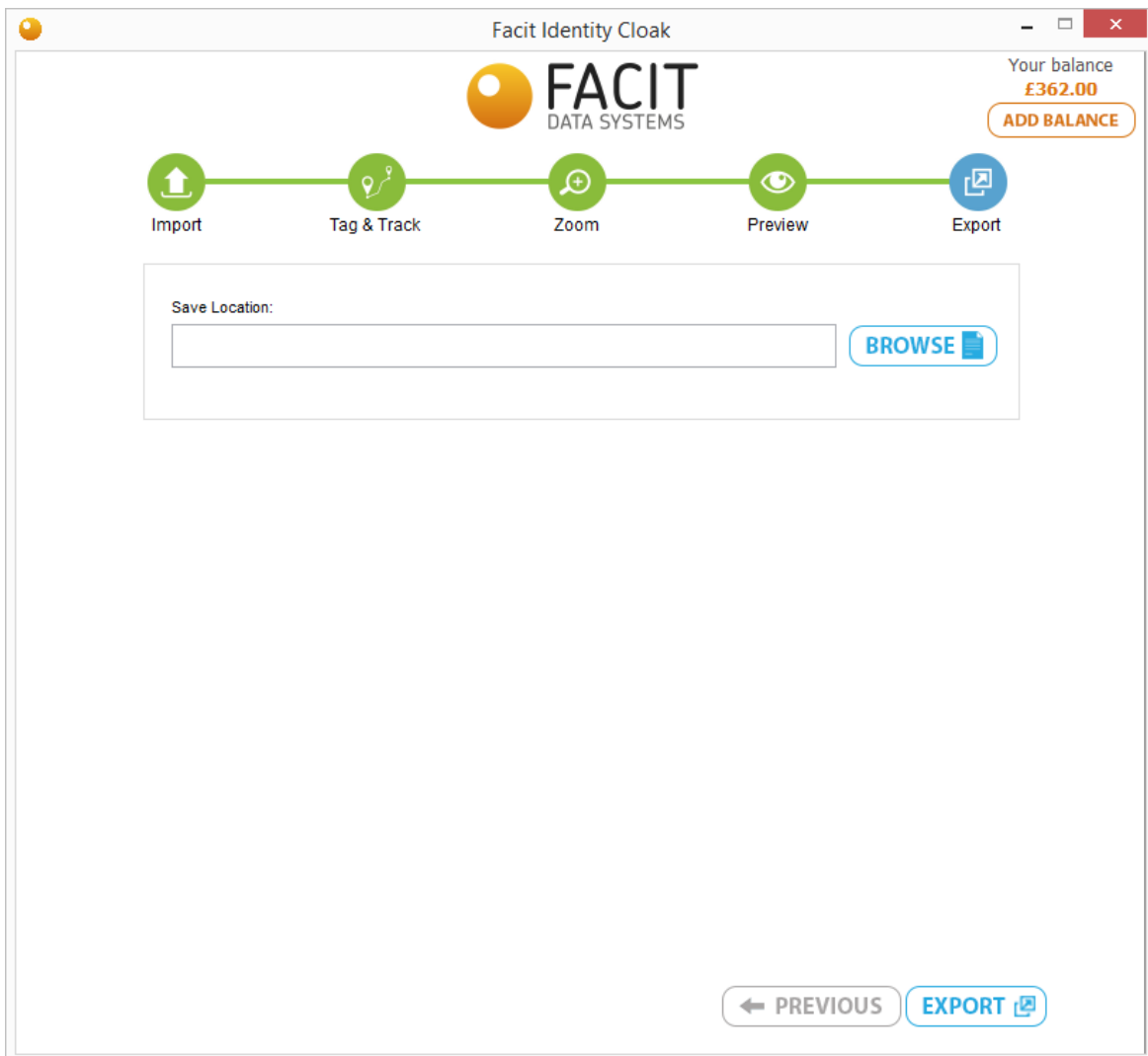


Figure 14 : Export window

4. FURTHER DETAILS

For any further assistance, please contact the Facit Data Systems technical support team at support@facitdatasystems.com.