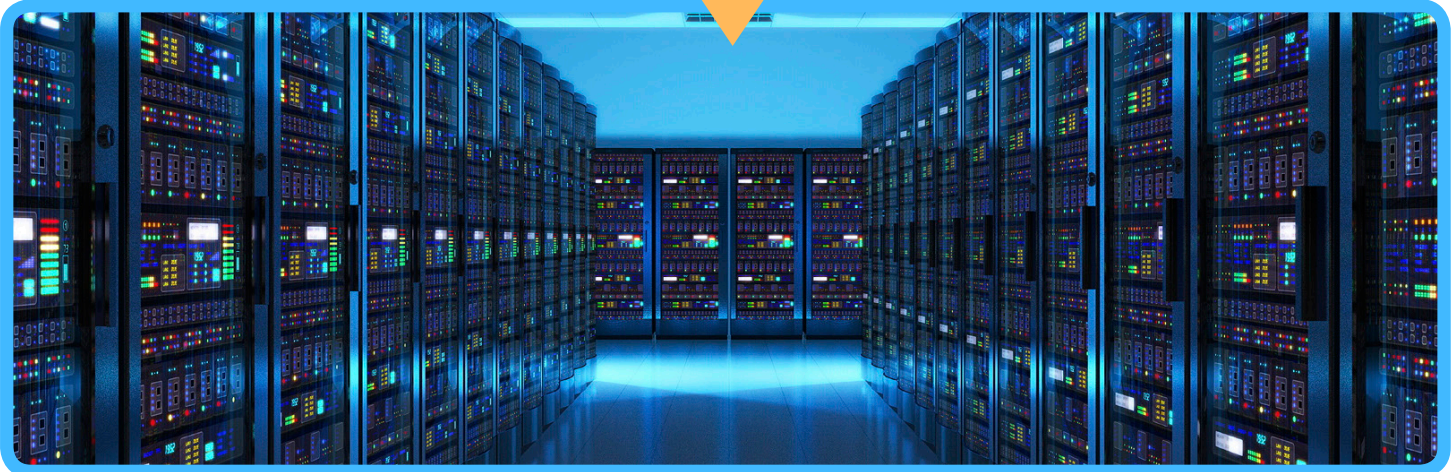


# VIDEO SURVEILLANCE STORAGE



## ARXYS | SHIELD-CORE

### Storage | Orchestrated



At the heart of successful security and surveillance solutions is high performance, scalable data access and protection. Arxys | Shield-Core delivers the intense multi-streaming throughput & data resilience required by advanced Video Management Systems at the lowest Total Cost of Ownership of any solution in the industry.

Arxys | Shield-Core delivers solid high availability protection with high performance access to video surveillance data. Software Orchestrated Storage 128 bit ZFS technology delivers breakthrough performance & pay as you grow scalability to power video surveillance solutions. Leveraging the core performance and scalability features of Arxys | Sentio SDS to solve surveillance needs

Arxys | Shield-Core is the protected security and surveillance platform of choice when security matters.



Genetec



### Advantages

- Highest multi-streaming bandwidth available
- Compatible with all leading Video Management Servers
- Lowest Total Cost Of Ownership storage server
- Scale-up technology delivers future-proof security

### Storage | Optimized



Arxys | Shield-Core high-density storage servers are designed for mid to large enterprise security installations. Advanced caching, high-performance enterprise grade drives and 128 bit ZFS technology deliver leading edge performance with efficiency.

The combination of high throughput & advanced data protection makes the Shield Core optimized for video streaming and archiving.

- Optimized for Private Clouds
- Guaranteed data protection
- Hardware independence
- Flexible scalability

With advanced hardware failover mechanisms, video surveillance systems built on Shield Core ensure sensitive video data is accessible. Shield-Core is optimized for high performance and scalability for high bandwidth applications where maximum uptime is not critical. All of the Core features without the advanced protection and disaster recovery features.

## Storage | Secured



IP surveillance requires a reliable, high performance storage infrastructure. Video Surveillance data requires secure, and guaranteed access for evidence and proof. Private Clouds that involve on-site data content for additional security are the leading choice. Arxys | Shield-Core delivers the 24x7 high availability and streaming performance required by law enforcement, public sector security deployments where security is paramount. Security & surveillance solutions that demand performance and scalability rely on Arxys | Shield-Core.

### Hardware Resilience:

- Hot-swap, redundant Platinum power
- Multiple iSCSI or NAS connections
- Hot-Swap SAS Enterprise hard drives



**High Accessibility**  
Network connectivity via iSCSI or SMB over Ethernet & SAS.

**Data Protection**  
RAID 6 & 60 delivers double parity protection, ZFS & ECC technology ensures data integrity

**Data Virtualization**  
Thin & Over Provisioning w/ pooled storage, & scale as you grow storage capacity

**Scalability**  
Up to about 5PB in single namespace with the ZFS technology on Linux OS



## Storage | Defined



The Arxys | Shield-Core running Sentio Software Defined Storage (SDS) platform, is purpose-built to scale-up to make storage management disruptively simple while reducing storage costs and complexity. Sentio has verified support for all major SAN/NAS protocols including iSCSI/FC and NFS/CIFS/SMB and a high availability scale-up 128bit ZFS file system with fault-tolerant technologies. Arxys | Sentio delivers a full array of enterprise features and capabilities for file, block and object storage at the lowest TCO in the industry.

Powered by:   
**JovianDSS**

### Software Orchestrated Storage:

- RAID6 or 60 delivers double parity
- Scale to fit: Scale-up to 5PB
- 128bit optimized Storage OS
- Tiered cache delivers performance
- Scale-up storage pools as you grow



| Storage Controller   | Single Controller  | Chassis 3U Appliance  | RoHS Compliant, UL/cUL/CB/CE/BSMI/CCC   |
|----------------------|--|-----------------------|---|
| CPU's / Cache Memory | Intel® Xeon® processor E5-1620 v4- 4 Cores / Up to 128GB ECC, 288pin DDR4 SDRAM  | Dimensions            | 17.2" (437mm) x 5.2" (132mm) x 25.5" (647mm) (W x H x D)  |
| System Drives        | Mirrored Storage OS SSD controller drives  | Gross Weight          | Gross Weight: 72 lbs (32.66 kg), Full HDDs: 100lbs gross  |
| Internal Storage     | Up to (16) Sixteen Enterprise SAS Helium 12Gb HDD's 3.5"                         | Power Specifications  | Hot-swap redundant 800W digital power supplies, 100 - 240Vac / 50-60Hz Titanium Level Certified |
| Networking           | Quad 1Gbit Ethernet, Virtual Machine Device Queues Reduce I/O, IPMI v2.0 support | Operating Environment | 5°C to 35°C (41°F to 95°F) 5% to 95% (non-condensing)   |
| Host Connectivity    | iSCSI or NAS (SMB)   | Warranty              | 5-year limited warranty, Optional Gold Support  |

| Storage Capacity         | Arxys   Shield 3U Expander Chassis   | Chassis 3U expander   | 16 hot-swap 3.5" drive bays in 3U  |
|--------------------------|--|-----------------------|--|
| Expander Chassis         | Up to one (1) 3U expander chassis  | Dimensions: (W, H, D) | 174.8mm x 424mm x 1110mm / 6.88in. x 16.69in. x 43.7in. (with cable management arms)             |
| RAW TB (per 4u expander) | 160TB per 3U expander (Using 10TB enterprise drives)                                   | Gross Weight          | Gross Weight: 72 lbs (32.66 kg), Full HDDs: 100lbs gross   |
| Appliance Connectors     | 4 x 12Gbps Mini-SAS (4 per I/O Module), Fully compliant with 12Gb/s SAS 3 interconnect | Power Specifications  | Hot-swap redundant 1000W digital power supplies, 100 - 240Vac / 50-60Hz Titanium Level Certified |
| Hot-Swap FRU's           | Redundant power supplies, N+1 Fans, Drive Modules,                                     | Warranty              | 5-year limited warranty, Optional Gold Support   |



# ARXYS | SHIELD-CORE