

NEW VERSION 2.2 WITH

SURVEILLANCE LICENCE

MILESTONE XPROTECT PLUGIN

AUTOMATIC CHANGE OVER



NEXT GENERATION VIDEO WALL MANAGEMENT

eyevis™ eyeUNIFY Video Wall Software answers the flexible requirements of modern video walls and information display systems in control rooms, collaboration rooms, board rooms, crisis rooms and corporate signage applications. The software's modular, web-based concept allows for operation across platforms, different operating systems and a freely scalable number of clients.

Compatible with nearly every visual data and video source, eyevis eyeUNIFY Software provides the freedom to capture, display and share visual information across the video wall, control rooms and the entire enterprise.



Control of sources and displays



Encrypted communication



Comprehensive user management



Responsive web-based GUI



Open interfaces



Simple to maintain



Easy scalability

Main Features at a Glance



FREE POSITIONING AND SCALING

Resize and position the content source freely on the desktop area.



LAYOUT MANAGEMENT

Easily save a configuration of sources as a layout. Layouts can be used as a source groups or recalled as a window configuration on the entire video wall.



AUTOMATIC CHANGE OVER

Connections to executor devices can be monitored and linked to actions according to their status, e.g. switch automatically to a backup controller in case of fault detection.

NEW



REMOTE DESKTOP PROTOCOL (RDP)

Open and display any MS RDP remote session directly on the video walls and combine with other type of sources in video wall layouts.

NEW



REMOTE CONTROL

Access keyboard and mouse control of any controller driving the video walls and displays from any web client.

NEW



REMOTE DESKTOP CAPTURE & SOFTWARE KVM

The eyeUNIFY.cast service is a software for remote control, transfer, and distribute desktop content over the network.



FLOW SCHEDULER

Automate the management of your video wall with time-controlled triggers and associated tasks. Opening of sources and layouts, send commands, execute linked commands, and upstream switchers control.

NEW



LOGGING

The advanced logging provides a comprehensive overview of the activities on your video wall system, such as system events, user accesses and actions.



PANORAMA VIEW

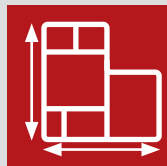
Get an even more intuitive overview by uploading a photo or plan of your room or building and placing your existing video walls and displays on it.

NEW



USER MANAGEMENT

Connect eyevis eyeUNIFY Software to your existing LDAP/Active Directory and make use of role based user management and centralized user authentication.



MULTI-DISPLAY MANAGEMENT

eyevis eyeUNIFY Software can scale from single screen installations, to multi-screen controllers or distributed video wall systems without limitations.



OPEN INTERFACES

Easily integrate eyevis eyeUNIFY Software into your system architecture and connect existing and new components over the API.



WALL SYNC

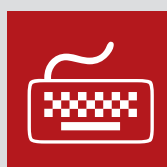
Synchronize two video walls and let them display the same content at a given time: any change on the layout of one of the two walls will automatically be mirrored on the second display wall.

NEW



AUDIO MANAGEMENT

Control the sound level of any HDMI or DP source from any client.



HOTKEY MANAGER

Freely define your individual hotkeys and keyboard shortcuts for every operator workstation. Users can immediately respond to a situation by pressing a button.



MULTI-LANGUAGE

Chose between English, German, Italian and French. More languages can easily be integrated based on customer's needs.



OFFLINE LAYOUT

Create or to modify a layout offline, that is to say without impacting the video wall display

NEW



WEB PAGES AUTO-REFRESH

Parameter the automatic refresh of a Web Page displayed on the video wall, using the Browser type of source.

NEW

The eyeUNIFY User Interface at a Glance

The web-based graphical user interface can be opened from any device with any browser within the system. After entering your user credentials you will receive an intuitive user interface enabling quick access to all functions assigned to that user.

Walls - List of available video walls/displays in the system

Panorama - Panoramic previews of your room or building

Sources - List of available sources within the system

Layouts - Shows the predefined layouts of windows/sources

Send Command - List of user-defined commands that can be sent by eyeUNIFY

Remote Control - Take K&M control of the executing controllers

Clean Wall - Closes all windows

Setup - Enter system setup to create sources, commands, walls, users, etc.

Logout

Wall Sync - Synchronize windows/sources on two or more video walls

Layout Mode - Switch to layout mode (offline mode) to create layouts without changing the active layout

Preview - Activate preview mode to show wall content (available for selected source types)

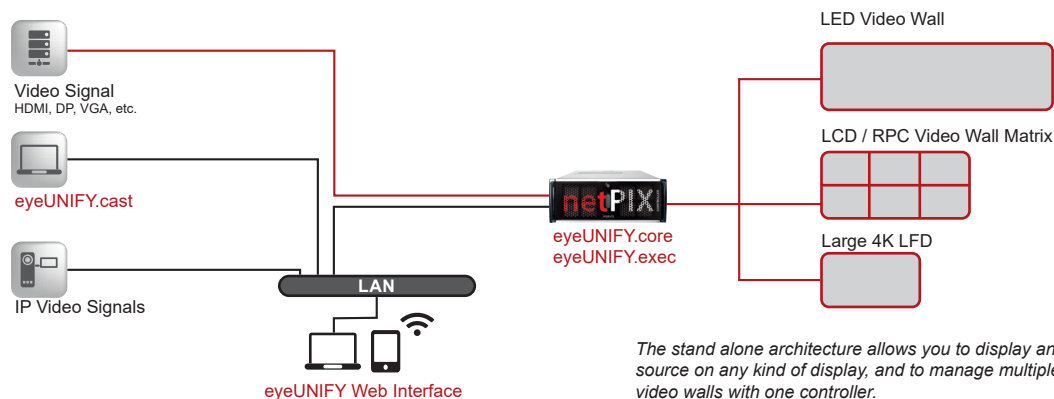
List area shows available feature items

Wall preview area for sources, layouts, etc.

CONFIGURATIONS EXAMPLES

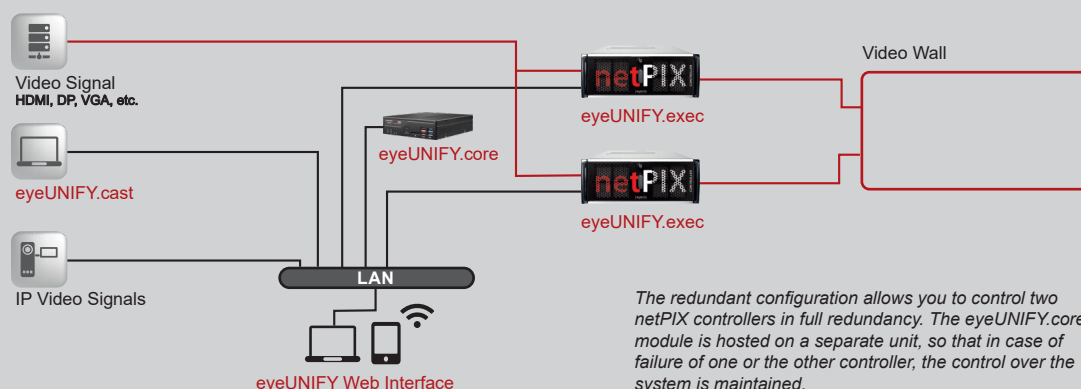
■ Stand-alone configuration

eyeUNIFY.core and eyeUNIFY.exec on the same controller



■ Redundant Configuration

eyeUNIFY.core is executed on a separate control unit



New eyevis eyeUNIFY Surveillance Licence

With the new eyevis eyeUNIFY Surveillance licence available from version 2.2, we close the gap between video management and wall management. As a first development, an integration of the leading video management suite XProtect® by Milestone is available. Either a plugin can be used to control the eyeUNIFY wall management in the XProtect Smart Client interface or you can integrate your Milestone XProtect Server as a source in eyeUNIFY, whereby the available Milestone sources are automatically made available as new window sources in eyeUNIFY.

Two levels of integration with Milestone XProtect VMS:

- eyeUNIFY Plug-in allows you to control the video wall directly from Milestone XProtect Smart Client
- The Milestone video player is embedded on our decoding appliances EPU-300 and netPIX-range



Calderdale Council CCTV Centre, UK

eyevis eyeUNIFY Plugin for Milestone XProtect® VMS



TECHNOLOGY
PARTNER
PROGRAM

The new eyevis eyeUNIFY plugin available on the Milestone Marketplace allows Milestone users to seamlessly control any Leyard/Planar/eyevis video wall and any other connected displays, directly from the Milestone XProtect Smart Client.

Milestone XProtect® is a global market leading Video Management Software (VMS) that brings the puzzle pieces of a video surveillance installation together in a perfect combination to create a solution that keeps people, premises and property safe today – and tomorrow. With XProtect as the foundation of your video surveillance, you get the freedom to build the entire system just the way you like it. Built on an open platform architecture you can customize your surveillance system and integrate other business applications into it for increased usability and performance. With +20 years in the market, XProtect has proven to be the right answer for more than 500,000 installations worldwide – from flower shops to universities, stadiums and cities. With the market's broadest device support, XProtect VMS is compatible with more than 8,500 devices.

Control your video wall from Milestone XProtect Smart Client

The eyevis video wall control plugin provides operators of the XProtect Smart Client easy and seamless access to an array of functions for changing the content on the eyevis video wall(s).

- Select the video wall or display you wish to control
- Select the preset you wish to launch on the video wall
- Select any window within that preset layout that you wish to change the source content
- Select the new source that you wish to be displayed from the wide range of available sources including IP & analogue video, graphic workstation data, web data or collaboration data from mobile devices
- Send commands to any 3rd party device (TCP/UDP)



Layout Selection:

Choose a pre-defined video wall layout from the from the list of layouts in eyeUNIFY



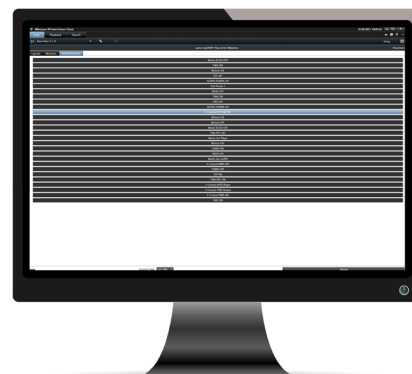
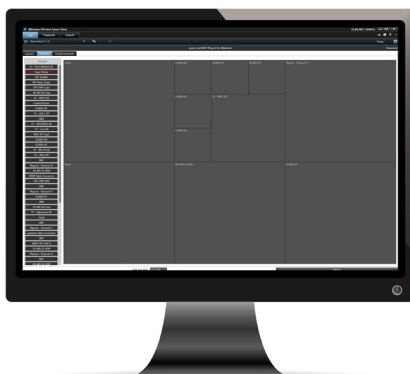
Source Selection:

Select a source from the source list to be displayed in a defined area



Send Command

Send any predefined command through eyeUNIFY interfaces, e.g. turn the video wall on/off



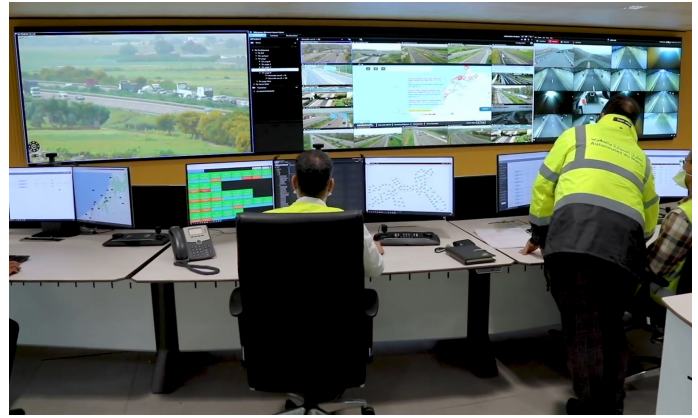
The benefits of eyevis Milestone XProtect Plugin

Based on years of experience in providing video wall systems within security control room applications, eyevis has developed a unique video wall Plugin within the Milestone XProtect system.

This allows Milestone users to seamlessly control any eyevis video wall(s) and any other connected displays, directly from the Milestone XProtect Smart Client.

The benefits include:

- Seamless control of any number of eyevis video walls or displays from XProtect
- XProtect users now have direct access to the unique features of eyevis video wall technology
- Display on the video wall of the widest range of security control room sources including:
 - IP & analogue video
 - Workstation graphic sources e.g. access control, alarm monitoring, mapping
 - Web/intranet based data
 - Live TV news feeds
 - RSS news & organisational status feeds
 - Collaborative data from mobile devices such as iPad, Android & phones



Autoroutes du Maroc Highway Control Centre

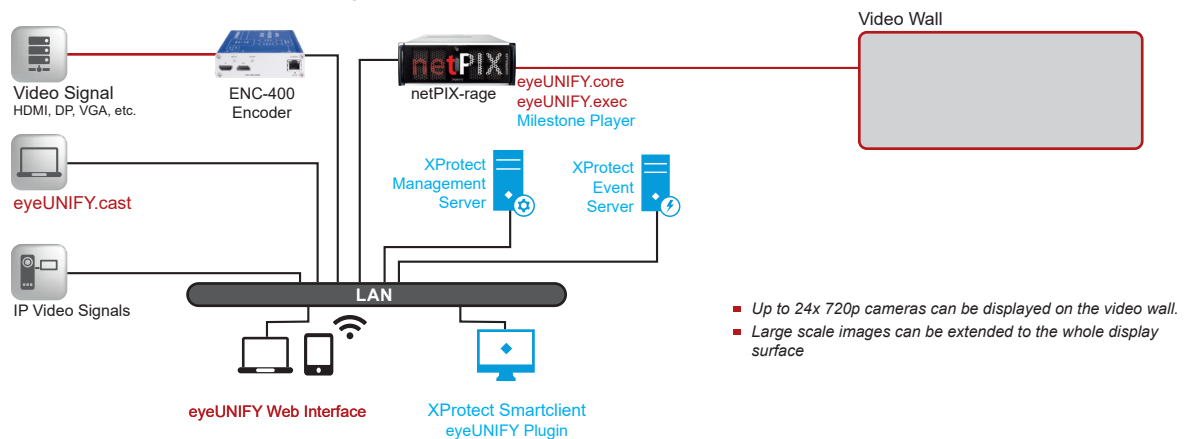


Eurotunnel Control Room Calais

CONFIGURATIONS EXAMPLES

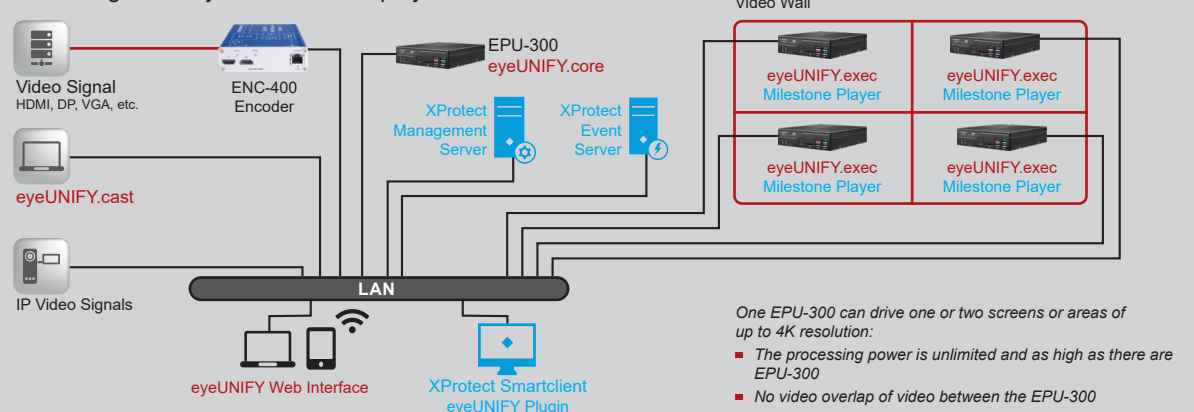
■ Milestone Player with nePIX Rage

Recommended for small to medium size projects with all network sources



■ Milestone Player with EPU Configuration

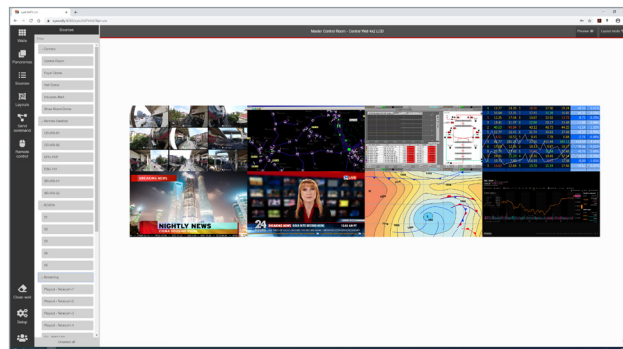
Recommended for high density of cameras displayed



eyevis eyeUNIFY Sources, Licences, Environment

MANAGEABLE SOURCE TYPES

- **Applications:** Any type of software running on the wall controllers
- **Browser:** For the display of URLs, websites, and various file types
- **Carousel:** Looping sequence of selected available sources
- **Clock:** Digital clock that can be freely scaled and positioned
- **Message Box:** Displays definable text messages or RSS feeds
- **Milestone Camera:** Available Milestone Cameras or sources
- **RDP:** RDP remote sessions displayed directly on the video wall
- **RGB:** Physical inputs on the controller (HDMI, DP, Analog, etc.)
- **Stream:** IP video streams encoded on the controllers or EPU's
- **eyeUNIFY.cast:** Content from workstations connected through the LAN



New eyevis eyeUNIFY Software 2.2 GUI

AVAILABLE LICENCES

Features	eyeUNIFY Licence Type		
	Professional	Enterprise	Surveillance
All Main Features Including Hotkey Manager, API, flows (Auto Change over)	✓	✓	✓
Capture Service Remote desktop capture (CAST), RDP, Wall Sync		✓	✓
Surveillance Features Milestone Integration			✓

eyeUNIFY HARDWARE ENVIRONMENT



eyevis™ netPIX™ Video Wall Controllers

- Highly flexible Video Wall Controller solution
- Wide range of input connections, large number of outputs
- Simple system architecture
- Expandable for future system upgrades
- High performance



eyevis Processing Unit EPU-300

- Industrial-standard small form factor PC
- Flexible use as application server for the eyeUNIFY.core or as decoding device for one or several displays in an eyeUNIFY Infinity Wall installation



Teracue Video Encoders

- Reliable 24/7 video transmission via IP networks
- Supports common HD-SDI and HDMI standards
- Fully integrated in the eyeUNIFY Infinity Wall concept