



## ADMINISTRATOR MANUAL

V2.6.2.5 | HALO 2.0, 2C AND 3C MODELS

Brought to you by:



1490 North Clinton Ave, Bay Shore NY 11706  
[www.ipvideocorp.com](http://www.ipvideocorp.com) • [info@ipvideocorp.com](mailto:info@ipvideocorp.com) • 631.969.2601





About This Document, Legal Considerations, Liability, Intellectual Property Rights, & Equipment Modification .....	3
Trademark Acknowledgments & Regulatory Information: Electromagnetic Compatibility .....	4
Safety Information .....	5
Electrical Safety .....	5
Laser Safety Notice .....	6
Battery, Disposal and Recycling .....	7
Support .....	7
Introduction .....	8
Hardware Overview 2.0 / 2C / 3C .....	9
Setup Prerequisites .....	14
Finding HALO Smart Sensors on a Network .....	14
First Time Setup .....	15
Connection to a HALO Smart Sensor / Dashboard .....	19
Live Views .....	20
Live View: Image Settings .....	21
About / Device Info / Legal .....	22
Device Management .....	23
Network (Ethernet, WiFi, HTTP / HTTPS, & CLOUD) / Certificates .....	26
Downstream PoE .....	28
Cloud Registration .....	29
User Management .....	30
Events / Pause / Hysteresis .....	31
Actions / Wave Files.....	33
LED Pattern.....	35
Notifications / Email .....	36
Integrations / External Messaging / Heartbeat / RTSP / Paths .....	38
BACnet, Protocol Implementation Conformance (PIC) Statement .....	42
Image Settings.....	47
Relays & Factory Reset for HALO 2.0 and 2C.....	48
Relays & Factory Reset for HALO 3C.....	49
External Inputs.....	50
Maintenance & Testing .....	51
End User License Agreement .....	53





## ABOUT THIS DOCUMENT

This manual is intended for administrators and users of IPVideo HALO Smart Sensor, and is applicable to hardware versions 2, 2C, and 3C, HALO firmware version 2.6 and later. It includes instructions for using and managing the product on your network. Previous experience of networking will be of use when using this product. Some knowledge electrical circuitry and alarm panel connection may be useful in certain types of installations. Later versions of this document will be posted at [www.halodetect.com](http://www.halodetect.com). See also the product's online help, available through the web-based interface.

## LEGAL CONSIDERATIONS

### WARNING

**HALO Smart Sensors are NOT a LIFE SAFETY device. They do NOT replace LIFE SAFETY devices such as carbon monoxide monitors or smoke detectors.**

### ATTENTION

**HALO Smart Sensors n'est pas un appareil LIFE SAFETY. Il ne remplace PAS les dispositifs LIFE SAFETY tels que les moniteurs de monoxyde de carbone ou les détecteurs de fumée.**

Environmental and behavioral monitoring can be regulated by laws that vary from country to country. HALO has been designed to prohibit any direct monitoring or recording of video or audio, please check your local laws to ensure compliance.

## LIABILITY

Every care has been taken in the preparation of this document. Please inform your local IPVideo Corporation office of any inaccuracies or omissions. IPVideo Corporation cannot be held responsible for any technical or typographical errors and reserves the right to make changes to products and manuals without prior notice. IPVideo Corporation makes no warranty of any kind with regard to the material contained within this document including, but not limited to, warranties of merchantability and fitness for a particular purpose. IPVideo Corporation shall not be liable nor responsible for incidental or consequential damages in connection with the furnishing, performance, or use of this material. This product is only to be used for its intended purpose.

## INTELLECTUAL PROPERTY RIGHTS

IPVideo Corporation has intellectual property rights relating to technology embodied in the product described in this document. In particular, and without limitation, these intellectual property rights may include on one or more patents or pending patent applications in the US and other countries.

This product contains open source and licensed 3rd party software components.

The complete list of open source and licensed 3rd party software components can be found through the Dashboard web page of HALO by navigating to: About > Legal > View Licenses.

## EQUIPMENT MODIFICATION

This equipment must be installed and used in strict accordance with the instructions given in the user documentation. This equipment contains no user-serviceable components. Unauthorized equipment changes will invalidate all applicable regulatory certifications and approvals.



## TRADEMARK ACKNOWLEDGMENTS

IPVIDEO CORPORATION is a registered trademark. All other company names and products are trademarks or registered trademarks of their respective companies.

Vista and WWW are registered trademarks of the respective holders. Java and all Java-based trademarks and logos are trademarks or registered trademarks of Oracle and/or its affiliates. SD, SDHC and SDXC are trademarks or registered trademarks of SD-3C, LLC in the United States, other countries or both. Also, miniSD, microSD, miniSDHC, microSDHC, microSDXC are all trademarks or registered trademarks of SD-3C, LLC in the United States, other countries or both.

## REGULATORY INFORMATION:

### ELECTROMAGNETIC COMPATIBILITY

This equipment has been designed and tested to fulfill applicable standards for:

- Radio frequency emission when installed according to the instructions and used in its intended environment.
- Immunity to electrical and electromagnetic phenomena when installed according to the instructions and used in its intended environment.

### USA

This equipment has been tested using a shielded network cable (STP) and found to comply with the limits for a Class A digital device, pursuant to part 15 of the FCC Rules. These limits are designed to provide reasonable protection against harmful interference in a residential installation. This equipment generates, uses and can radiate the radio frequency energy and, if not installed and used in accordance with the instructions, may cause harmful interference to radio communications. However, there is no guarantee that interference will not occur in a particular installation.

If this equipment does cause harmful interference to radio or television reception, which can be determined by turning the equipment off and on, the user is encouraged to try to correct the interference by one or more of the

- Reorient or relocate the receiving antenna.
- Increase the separation between the equipment and receiver.
- Connect the equipment into an outlet on a circuit different from to which the receiver is connected.
- Consult the dealer or an experienced radio/TV technician for help.



## SAFETY INFORMATION

The following convention is used within this manual. French translations of the critical levels are included.

### Hazard Levels

**DANGER**

Indicates a hazardous situation which, if not avoided, will result in death or serious injury.

**WARNING**

Indicates a hazardous situation which, if not avoided, could result in death or serious injury.

**CAUTION**

Indicates a hazardous situation which, if not avoided, could result in minor or moderate injury.

**NOTICE**

Indicates a situation which, if not avoided, could result in damage to property.

**DANGER**

Indique une situation dangereuse qui, si elle n'est pas évitée, entraînera la mort ou des blessures graves.

**ATTENTION**

Indique une situation dangereuse qui, si elle n'est pas évitée, pourrait entraîner la mort ou des blessures graves.

**MISE EN GARDE**

Indique une situation dangereuse qui, si elle n'est pas évitée, pourrait entraîner des blessures mineures ou modérées.

**REMARQUER**

Indique une situation qui, si elle n'est pas évitée, pourrait entraîner des dommages matériels.

### Other Message Levels

**IMPORTANT**

Indicates significant information which is essential for the product to function correctly.

**NOTE**

Indicates useful information which helps in getting the most out of the product.

## ELECTRICAL SAFETY

### HALO 2.0, 2C

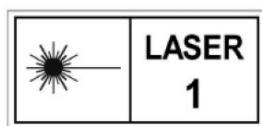
This product complies with IEC/EN/UL 60950-1, Safety of Information Technology Equipment. The product shall be grounded either through a shielded network cable (STP) or other appropriate method. The power supply used with this product shall fulfill the requirements for Safety Extra Low Voltage (SELV) and Limited Power Source (LPS) according to IEC/EN/UL 62368-1 or IEC/EN/UL 60950-1.

### HALO 3C

This product is pending UL CSA/IEC/EN 62368-1 Safety testing.

## LASER SAFETY NOTICE

### CAUTION



HALO Smart Sensors contain a **CLASS 1 LASER PRODUCT** in accordance with standard **IEC60825-1:2014**. This product complies with **21 CFR 1040.10 and 1040.11** except for conformance with **IEC 60825-1 Ed. 3.**, as described in Laser Notice No. 56, dated May 8, 2019.

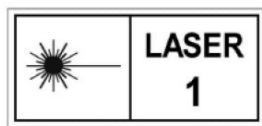
**Caution – use of controls or adjustments or performance of procedures other than those specified herein may result in hazardous radiation exposure.**

No regular maintenance is required to keep this product in compliance.

### Level 1 Maintenance Considerations

Level 1 Maintenance procedures for the HALO Smart Sensors do not require removal of any components that would expose the Class 1 Laser Assembly.

### MISE EN GARDE



HALO Smart Sensors contient un **PRODUIT LASER DE CLASSE 1** conforme à la norme **IEC60825-1: 2014**. Ce produit est conforme aux normes **21 CFR 1040.10 et 1040.11**, à l'exception de la conformité à la norme **IEC 60825-1 Ed. 3.**, tel que décrit dans l'Avis laser n ° 56 du 8 mai 2019.

**Attention - L'utilisation de commandes ou de réglages ou la réalisation de procédures autres que celles spécifiées dans le présent document peut entraîner une exposition à des radiations dangereuses.**

Aucun entretien régulier n'est requis pour maintenir ce produit en conformité.

### Considérations de maintenance de niveau 1.

Les procédures de maintenance de niveau 1 pour le capteur intelligent HALO ne requièrent pas le retrait de composants susceptibles d'exposer l'assemblage laser de classe 1.

## BATTERY

These products use a lithium battery as the power supply for its internal real-time clock (RTC). Under normal conditions this battery will last for a minimum of five years. Low battery power affects the operation of the RTC, causing it to reset at every power-up. The battery should not be replaced unless required, but if the battery does need replacing, contact IPVideo Corporation support for assistance. Lithium coin cell 3.0 V batteries contain 1,2-dimethoxyethane; ethylene glycol dimethyl ether (EGDME), CAS no. 110-71-4.

### WARNING

- Risk of explosion if the battery is incorrectly replaced.
- Replace only with an identical battery or a battery which is recommended by IPVideo Corporation
- Dispose of used batteries according to local regulations or the battery manufacturer's instructions.

### ATTENTION

- Risque d'explosion si la batterie est remplacée de manière incorrecte.
- Remplacez uniquement avec une batterie identique ou une batterie recommandée par IPVideo Corporation.
- Éliminez les piles usagées conformément aux réglementations locales ou aux instructions du fabricant.

## DISPOSAL AND RECYCLING

When these products have reached the end of their useful life, dispose of it according to local laws and regulations. For information about your nearest designated collection point, contact your local authority responsible for waste disposal. In accordance with local legislation, penalties may be applicable for incorrect disposal of this waste.

## SUPPORT

Should you require any technical assistance, please contact your IPVideo Corporation Authorized Reseller. If your questions cannot be answered immediately, your reseller will forward your queries through the appropriate channels to ensure a rapid response. If you are connected to the Internet, you can download user documentation and software updates.

**Technical Support via Telephone:** (631) 647-9970

**Technical Support via Email:** [techsupport@ipvideocorp.com](mailto:techsupport@ipvideocorp.com)

**Live technical support is available Monday through Friday (excluding holidays) between the hours of 8 AM and 5 PM Eastern Standard Time.**

©2022 IPVideo Corporation. All Rights Reserved. This manual or parts thereof may not be reproduced in any form unless permitted by contract or by written permission of IPVideo Corporation.



## INTRODUCTION

HALO Smart Sensors are IoT devices that detect environmental changes that occur in many locations including privacy concern areas where surveillance cameras can't be installed. HALO Smart Sensors are capable of detecting many things such as vaping, smoke, vaping with THC, specific key words, gunshots, air quality, and aggression in areas a camera cannot be placed. Additional sensors give HALO the ability to monitor air quality index (AQI), temperature, humidity, many hazardous chemicals and more. When the sensor values exceed threshold levels, HALO Smart Sensor can send alerts to responders.



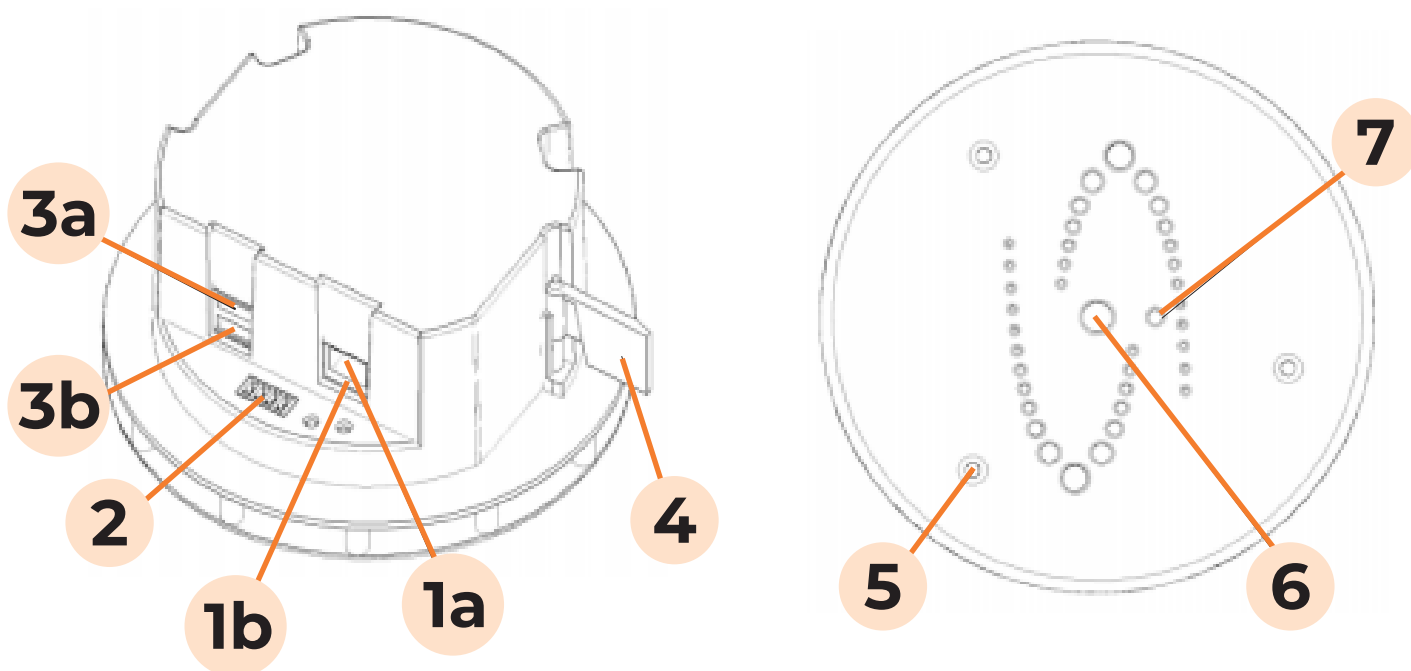
## HALO 2.0 AND HALO 2C HARDWARE OVERVIEW

### NOTICE

The product shall be connected using a shielded network cable (STP). All cables connecting the product to the network shall be intended for their specific use. Make sure that the network devices are installed in accordance with the manufacturer's instructions. For information about regulatory requirements, see Electromagnetic Compatibility (EMC) on page 4.

### REMARQUER

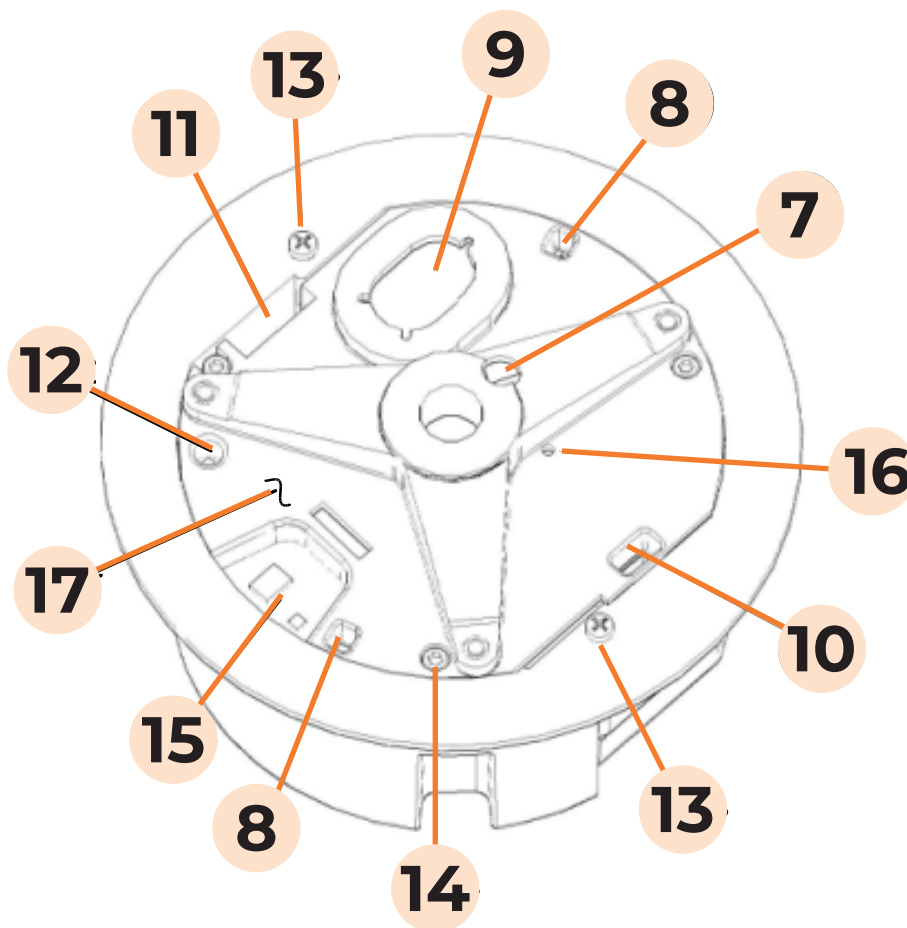
Le produit doit être connecté à l'aide d'un câble réseau blindé (STP). Tous les câbles reliant le produit au réseau doivent être destinés à leur utilisation spécifique. Assurez-vous que les périphériques réseau sont installés conformément aux instructions du fabricant. Pour plus d'informations sur les exigences réglementaires, voir Compatibilité électromagnétique (CEM) à la page 4.



- 1a. (HALO-V2.0) Network Connection (RJ-45) – requires 802.3af Power over Ethernet
- 1b. (HALO-2C) USB Ports – currently unused
- 2. Relay Connection (Plug supplied)
- 3a. (HALO-V2.0) USB Ports – currently unused
- 3b. (HALO-2C) Network Connection (RJ-45) – requires 802.3af Power over Ethernet
- 4. Locking Wing – see installation guide
- 5. Cover Securing Screws (3) – T10 Torx driver required
- 6. Multi-color LED Indicator
- 7. Light Sensor

## HALO 2 OUTER COVER REMOVED

The outer cover must be removed (by removing the three T10 TORX screws [5] with the provided wrench) during installation and to perform a manual factory reset. The figure below shows details exposed when the Outer Cover is removed.

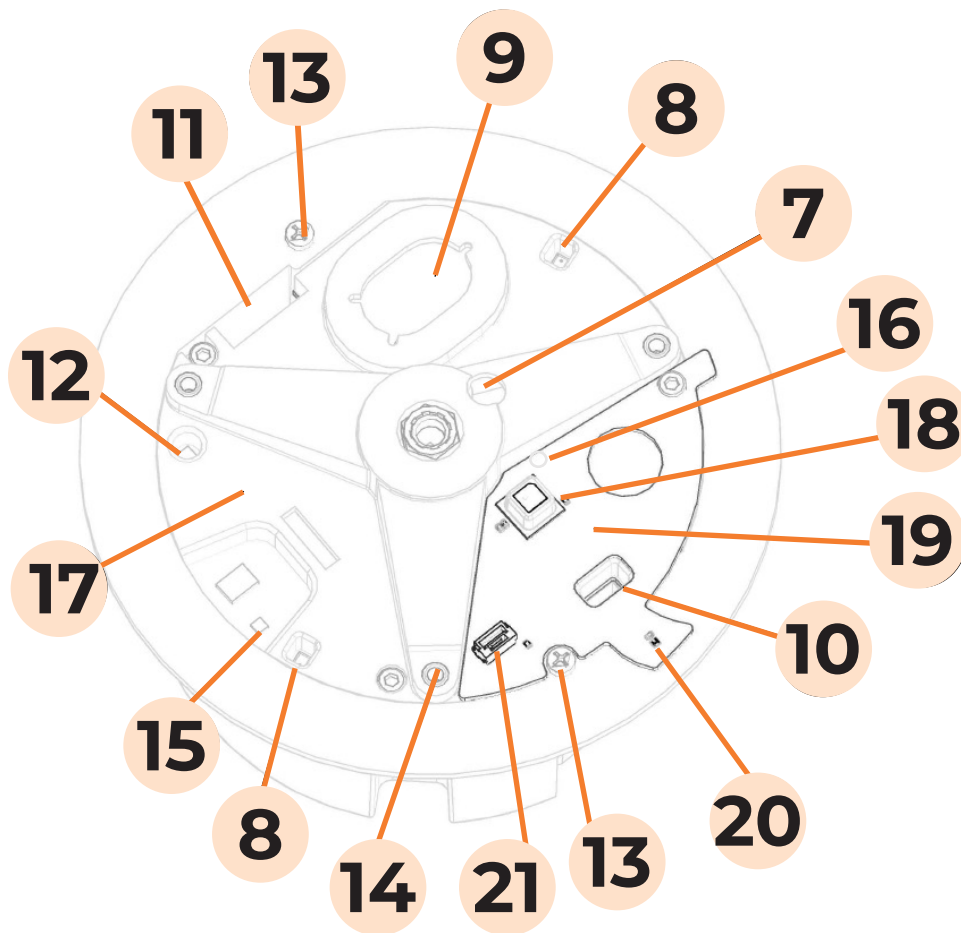


- 7. Light Sensor on PC board
- 8. Microphones
- 9. Loudspeaker
- 10. Particle Air Intake Port
- 11. Particle Air Exhaust Port
- 12. Temperature and Humidity sensor

- 13. Clamping Screws
- 14. Inner Cover Mounting Screws (3)
- 15. Gas Sensors
- 16. Reset Button on PC Board
- 17. Inner Cover

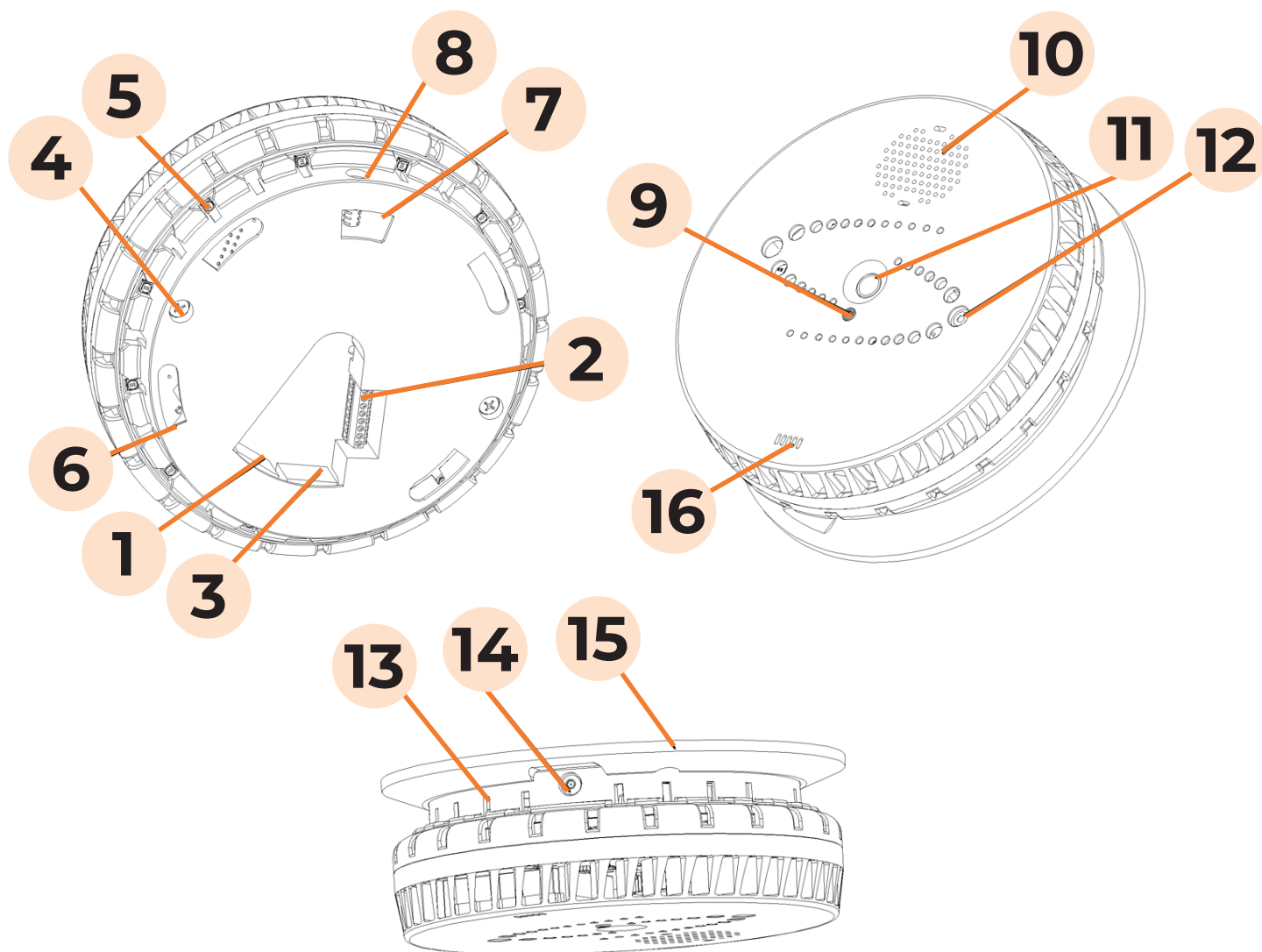
## HALO 2C OUTER COVER REMOVED

The outer cover must be removed (by removing the three T10 TORX screws [5] with the provided wrench) during installation and to perform a manual factory reset. The figure below shows details exposed when the Outer Cover is removed.



- |                                     |                                  |
|-------------------------------------|----------------------------------|
| 7. Light Sensor on PC board         | 15. Gas Sensors                  |
| 8. Microphones                      | 16. Reset Button on PC Board     |
| 9. Loudspeaker                      | 17. Inner Cover                  |
| 10. Particle Air Intake Port        | 18. Gas Sensor                   |
| 11. Particle Air Exhaust Port       | 19. HALO 2C Expansion Board      |
| 12. Temperature and Humidity sensor | 20. Temperature/ Humidity Sensor |
| 13. Clamping Screws                 | 21. Plug Connector               |
| 14. Inner Cover Mounting Screws (3) |                                  |

## HALO-3C HARDWARE OVERVIEW

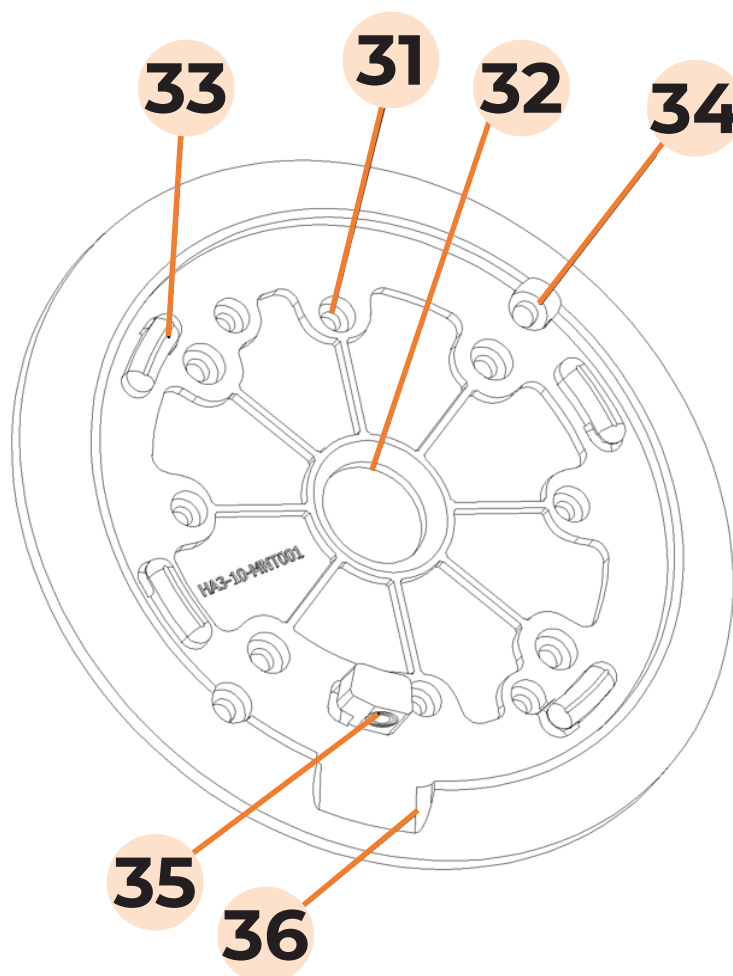


- |  |   |
|--|---|
| 1. Input Network Connection (RJ45) – requires 802.3AT or 802.3AF Power over Ethernet | 8. Security Screw Slot for Locking Mechanism  |
| 2. External Connector Terminal Block   | 9. Lux Sensor                                 |
| 3. Downstream Network Connection – Supplies 802.3AF Power over Ethernet              | 10. Speaker Grill                             |
| 4. Screw for Unit Assembly   | 11. PIR Sensor                                |
| 5. Multi-color LED light (12)  | 12. People Counting Sensor                    |
| 6. Slot for Mounting Plate (4)   | 13. Slot for Air                              |
| 7. Slot for Mounting Plate Locking Mechanism   | 14. Security Screw Slot for Locking Mechanism |
|  | 15. Mounting Plate                            |
|  | 16. Particle Sensor Port                      |



### HALO 3C MOUNTING PLATE REMOVED

The device must be separated into two halves by undoing one security [6] then twist the device apart to perform a manual factory reset. The figure below shows details exposed when the Mounting Plate is removed.



31. Mounting Screw Hole

32. Opening for Ethernet External Connection  
Wires

33. Mounting Plate Lock

34. Mounting Screw Hole

35. Security Screw Locking Mechanism

36. Clearing for Security Screw

Please refer to the HALO-3C Installation Guide found on <https://halodetect.com/resources/manuals-guides/> for more information on installation.

## SETUP PREREQUISITES

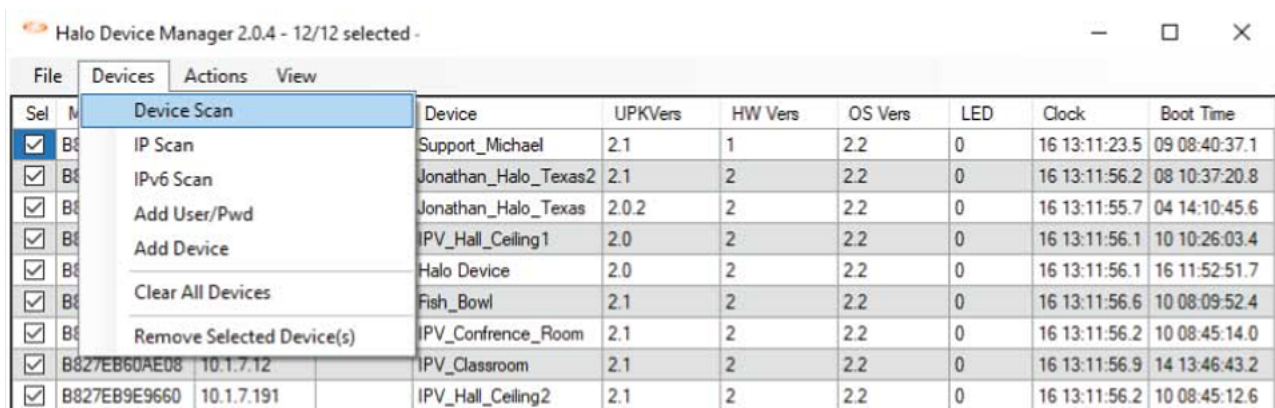
1. One or more HALO Smart Sensor devices connected to a standard office network where the steps in the HALO Installation Procedure have been followed resulting in confirmation that the device is operating and physically connected to the network.
2. Use one of three ways to find HALOs on the network.
  - Supply at least a temporary DHCP Server to provide an initial IP Addresses
  - Use self-assigned APIPA addresses
  - IPv6 Scan
3. If static addressing is planned, then the correct subnet mask, gateway address, and DNS address must be known.
4. An accessible Windows 10 PC connected to the same network with the Chrome web browser installed and must have the HALO Device Manager (HDM) installed, available at:  
<https://halodetect.com/resources/software-tools/>

## FINDING HALO SMART SENSORS ON A NETWORK

Start HALO Device Manager (HDM) on the PC by double clicking the program icon. Please refer to the HDM Guide for connection instructions, available at:

<https://halodetect.com/resources/manuals-guides/>

There should be an IP address for each HALO device on the network (for example, 192.168.1.X ).



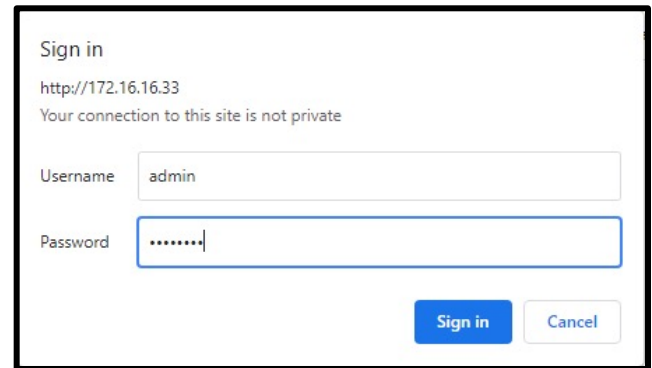
The screenshot shows the Halo Device Manager 2.0.4 application window. The title bar reads "Halo Device Manager 2.0.4 - 12/12 selected". The menu bar includes "File", "Devices", "Actions", and "View". A context menu is open over the "Devices" tab, showing options: "Device Scan", "IP Scan", "IPv6 Scan", "Add User/Pwd", "Add Device", "Clear All Devices", and "Remove Selected Device(s)". The main table displays a list of devices with columns: "Sel", "Device", "UPKVers", "HW Vers", "OS Vers", "LED", "Clock", and "Boot Time".

Sel	Device	UPKVers	HW Vers	OS Vers	LED	Clock	Boot Time
<input checked="" type="checkbox"/>	Support_Michael	2.1	1	2.2	0	16 13:11:23.5	09 08:40:37.1
<input checked="" type="checkbox"/>	Jonathan_Halo_Texas2	2.1	2	2.2	0	16 13:11:56.2	08 10:37:20.8
<input checked="" type="checkbox"/>	Jonathan_Halo_Texas	2.0.2	2	2.2	0	16 13:11:55.7	04 14:10:45.6
<input checked="" type="checkbox"/>	IPV_Hall_Ceiling1	2.0	2	2.2	0	16 13:11:56.1	10 10:26:03.4
<input checked="" type="checkbox"/>	Halo Device	2.0	2	2.2	0	16 13:11:56.1	16 11:52:51.7
<input checked="" type="checkbox"/>	Fish_Bowl	2.1	2	2.2	0	16 13:11:56.6	10 08:09:52.4
<input checked="" type="checkbox"/>	IPV_Conference_Room	2.1	2	2.2	0	16 13:11:56.2	10 08:45:14.0
<input checked="" type="checkbox"/>	B827EB60AE08 10.1.7.12 IPV_Classroom	2.1	2	2.2	0	16 13:11:56.9	14 13:46:43.2
<input checked="" type="checkbox"/>	B827EB9E9660 10.1.7.191 IPV_Hall_Ceiling2	2.1	2	2.2	0	16 13:11:56.2	10 08:45:12.6

## FIRST TIME SETUP: Establishing Connection

Connecting to a HALO device can be done in two separate ways. It can be done with the HALO Device Manager HDM (see HDM Manual) which is the preferred method for setting up multiple HALOs at once.

It can also be done by typing the HALO device's IP address in Google Chrome. A popup will appear asking for a username and password. Type **"admin"** for the username and **"changeme"** for the password. Click "Sign in".



Sign in

http://172.16.16.33

Your connection to this site is not private

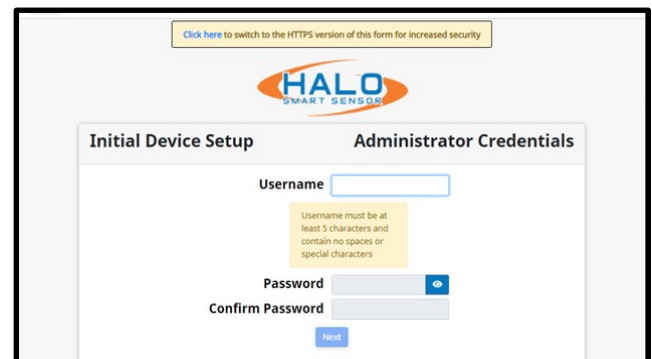
Username

Password

[Sign in](#) [Cancel](#)

## Initial Device Setup

The following prompt will pop up. For security reasons it is recommended to click the blue text saying, "Click here". This will ensure passwords are not visible on the network.



[Click here to switch to the HTTPS version of this form for increased security](#)

**HALO SMART SENSOR**

**Initial Device Setup** **Administrator Credentials**

Username

Username must be at least 5 characters and contain no spaces or special characters

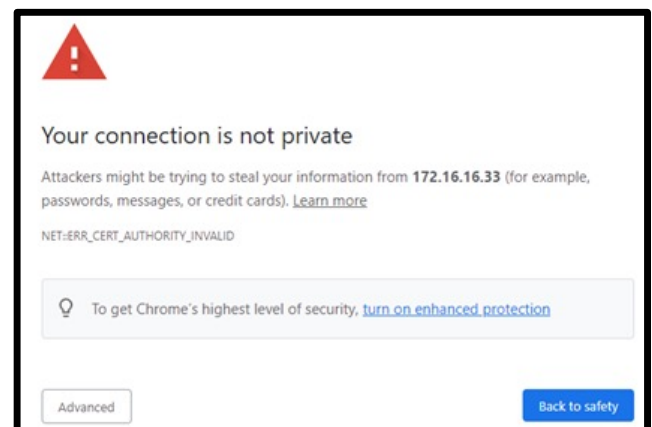
Password

Confirm Password

[Next](#)

If you follow the security recommendations a popup from Chrome will give a warning saying, "Your Connection is not private". The warning means the browser does not know who the server is, but the connection is secure.

Click "Advance", then click "Proceed to <ip address> (unsafe)".



**! Your connection is not private**

Attackers might be trying to steal your information from **172.16.16.33** (for example, passwords, messages, or credit cards). [Learn more](#)

NET:ERR\_CERT\_AUTHORITY\_INVALID

To get Chrome's highest level of security, [turn on enhanced protection](#)

[Advanced](#) [Back to safety](#)



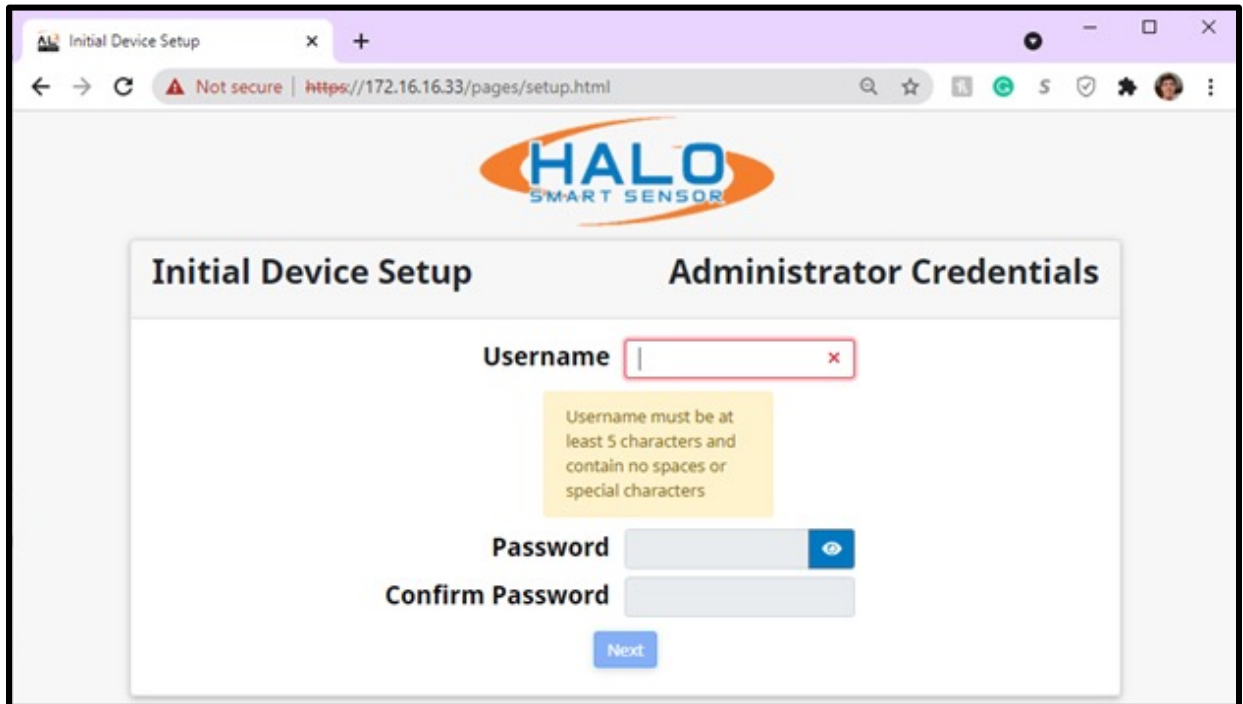
[Hide advanced](#) [Back to safety](#)

This server could not prove that it is **172.16.16.33**; its security certificate is not trusted by your computer's operating system. This may be caused by a misconfiguration or an attacker intercepting your connection.

[Proceed to 172.16.16.33 \(unsafe\)](#)

## FIRST TIME SETUP: Initial Device Setup CONTINUED

The search bar will say “Not secure | https”. Again, this in fact is safe and preferred. Under “Initial Device Setup” type in the username “admin” and “changeme” which was used earlier.



Initial Device Setup Administrator Credentials

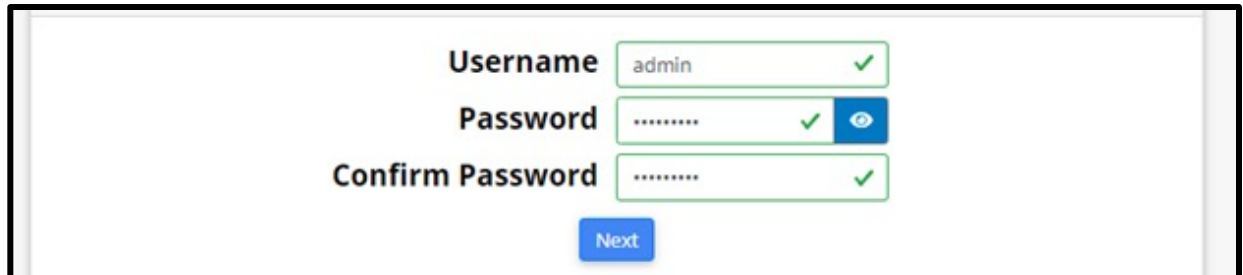
Username

Username must be at least 5 characters and contain no spaces or special characters

Password

Confirm Password

Next



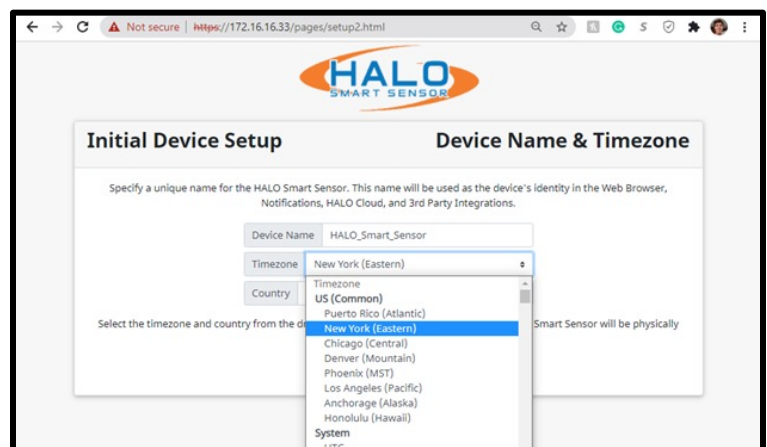
Username

Password

Confirm Password

Next

Click “Next”. The following Device Setup prompt will appear. Fill in the information Device Name, time zone, and country.



Initial Device Setup Device Name & Timezone

Specify a unique name for the HALO Smart Sensor. This name will be used as the device's Identity in the Web Browser, Notifications, HALO Cloud, and 3rd Party Integrations.

Device Name

Timezone

Country

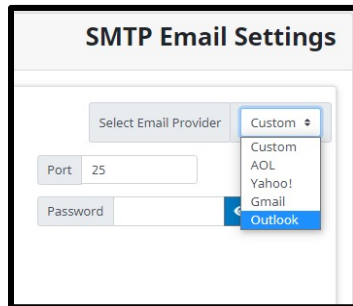
Select the timezone and country from the dropdown menu.

Smart Sensor will be physically

Next

## FIRST TIME SETUP: Initial Device Setup CONTINUED

Another Initial Device Setup prompt will appear. This is the last one. Start by clicking “Select Email Provider” in the top right corner and select the email provider to use with the HALO device.

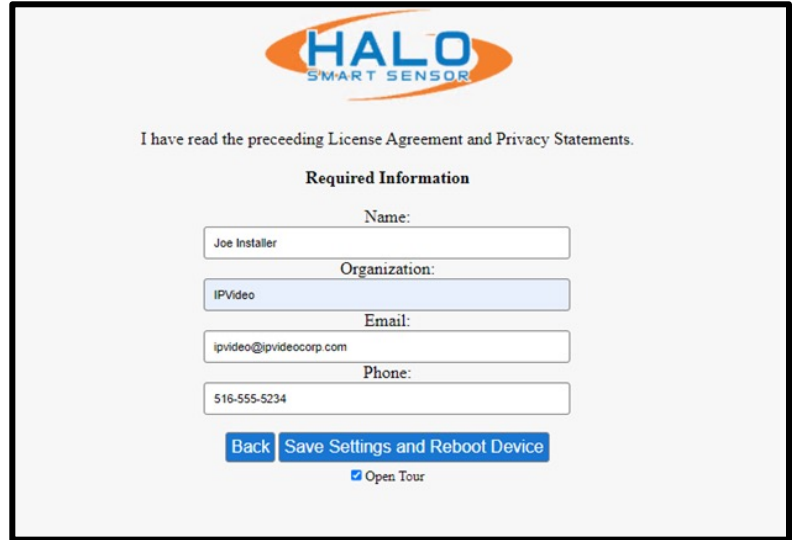


Once an Email Provider is selected, information on Host, Port, Security, and Auto Correct will update. In most cases “Auto Correct” will not be necessary as the server may block the email due to “Auto Correct” trying many ways to find the correct settings. Fill in other requested information then click “Save and Test Connection” then click “Next”.

IPVideo Corporation’s License Agreement and Privacy Policy will pop up next. After reading the following information click “I have read the above” and then “Next”.

## FIRST TIME SETUP: Initial Device Setup CONTINUED

Whoever read the last two forms shall fill out the required information. Once filled out click “Save Settings and Reboot Device”. Upon click an information webpage will pop-up to give the user more information on how to effectively use their device. A loading screen will appear of the HALO Smart Sensor rebooting. Once the device is rebooted the webpage will open.



I have read the preceding License Agreement and Privacy Statements.

**Required Information**

Name:  
Joe Installer

Organization:  
IPVideo

Email:  
ipvideo@ipvideocorp.com

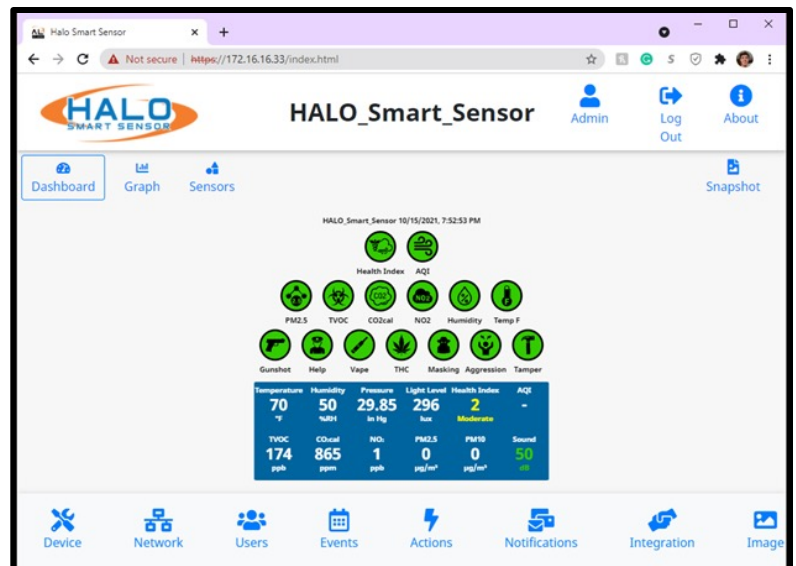
Phone:  
516-555-5234

[Back](#) [Save Settings and Reboot Device](#)

☒ Open Tour



The HALO device has been setup for the first time.





## CONNECTION TO A HALO SMART SENSOR

Navigate to the desired HALO by either selecting the HALO in HDM and Open Web Page from the Actions drop down menu (Chrome must be default browser) or navigating directly to the IP address in the Chrome web browser. The default Username is “admin” and the default password is “changeme”. HALO contains a security feature that requires a user to generate a new means of authentication before access is granted to the device for the first time.

**\*If the HALO that is updated from a version prior to 2.2 and has the default password it will change the existing password to “changeme” and require a password change on first login.**

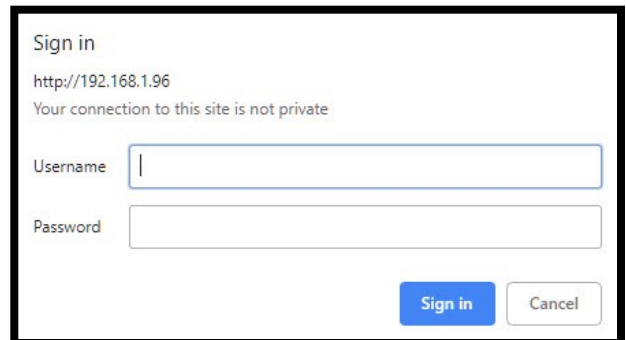
HALO restricts access to the built-in web server by usernames and passwords at two different levels, “admin” and “viewer”.

Username Requirements for Admins:

- 5+ Characters
- No Spaces or Special Characters

Password Requirements for Admins:

- 8+ Characters
- 1+ Lowercase Letter
- 1+ Uppercase Letter
- 1+ Numeric Character
- 1+ Special Character (!@#\$%^&\*\_- are allowed)
- Cannot Contain Username



Sign in

http://192.168.1.96

Your connection to this site is not private

Username

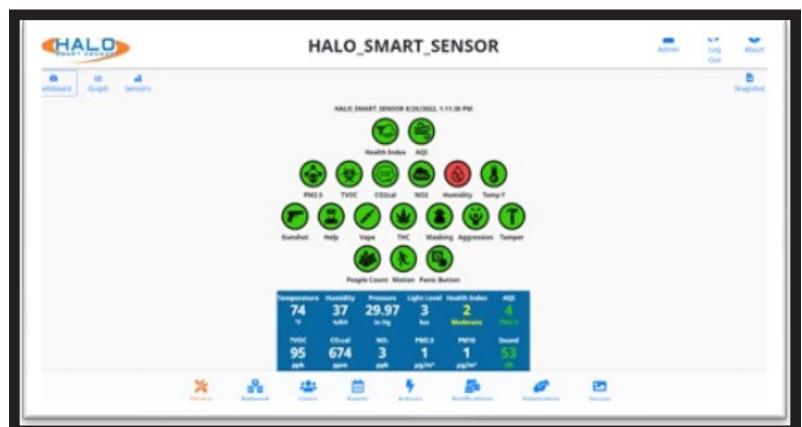
Password

An END USER LICENSE AGREEMENT (EULA) has been provided at first login to every HALO to ensure proper utilization of the HALO software and present important terms, restrictions on use, limits on liability of IPVideo to the end-user, and other useful clauses. At login, the user will be required to add the end username, email address, organization and title to acknowledge.

## DASHBOARD

From this dashboard you can navigate to various display and configuration pages including:

- Graph
- Sensors
- About
- Device
- Network
- Users
- Events
- Actions
- Notifications
- Integration
- Image



## LIVE VIEW

The dashboard has three different views that can be displayed. These views include Dashboard, Graph, and Sensors.

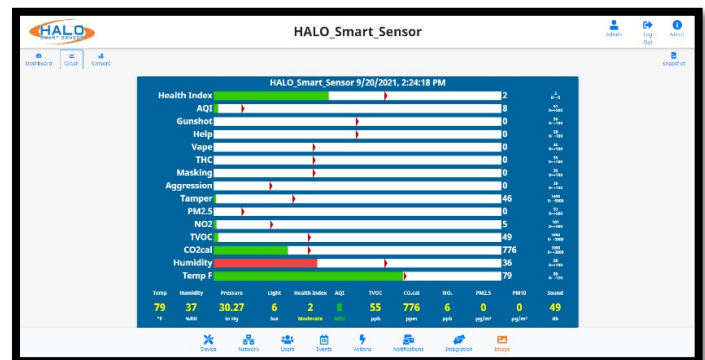
### Dashboard

Live information presented including “Normal” and “Alert” state display through color changing indicator icons as well as live readings of specific signatures. This can be configured from the “Image” button.



### Graph

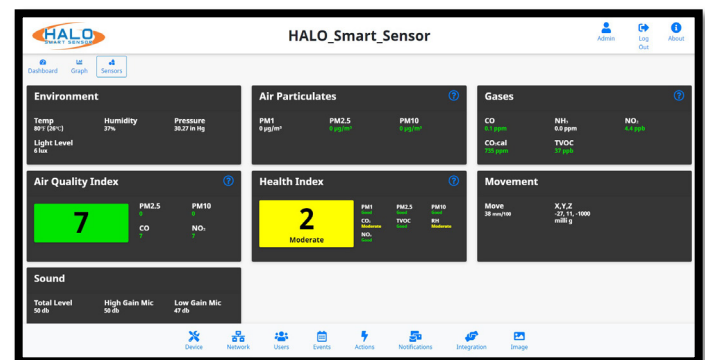
HALO's graph display showing live readings of sensors and signatures, graph readings are color coded for signature state. This can be configured from the “Image” button.



### Sensors

The raw sensors displayed in numerical values, including AQI (Air Quality Index). (Note: AQI is a normalized value generated over a long period of time and will not appear for at least an hour after a reboot or power cycle.)

For HALO 2C and HALO 3C, CO2cal will be displayed instead of CO2eq. The HALO 2C and HALO 3C incorporates a calibrated sensor to accurately detect CO2 levels within a room.





## LIVE VIEW CONTINUED

### Image Settings

**Main Colors**
Background:
Text:

**General**
☒ Show Date  
☒ Show Time  
☐ Use UTC Time  
☐ Use Metric

**Image Size**

Image Size 1280 X 720 (16:9) ▼

	Show	Min	Max	Color	Order	End Row
Health_Index	<input checked="" type="checkbox"/>	0	5	<div></div>	▼	<input type="checkbox"/>
AQI	<input checked="" type="checkbox"/>	0	500	<div></div>	▲ ▼	<input checked="" type="checkbox"/>
Gunshot	<input checked="" type="checkbox"/>	0	100	<div></div>	▲ ▼	<input type="checkbox"/>
Help	<input checked="" type="checkbox"/>	0	100	<div></div>	▲ ▼	<input type="checkbox"/>
Vape	<input checked="" type="checkbox"/>	0	100	<div></div>	▲ ▼	<input type="checkbox"/>
THC	<input checked="" type="checkbox"/>	0	100	<div></div>	▲ ▼	<input type="checkbox"/>

## LIVE VIEW GRAPH DISPLAY

Signatures can be shown or hidden by selecting the checkbox in the “Show” column. Graph “Min” and “Max” determine the scale for the graph to represent the values of the event signature. This range must include the threshold value of the individual signature. Color of the individual signature graph can be selected; the signatures can be sorted using the “Order” column sending the selected signature up or down from its current position. Selecting “End Row” will put the signature icon on the dashboard on a new row.

## SAVING SETTING CHANGES

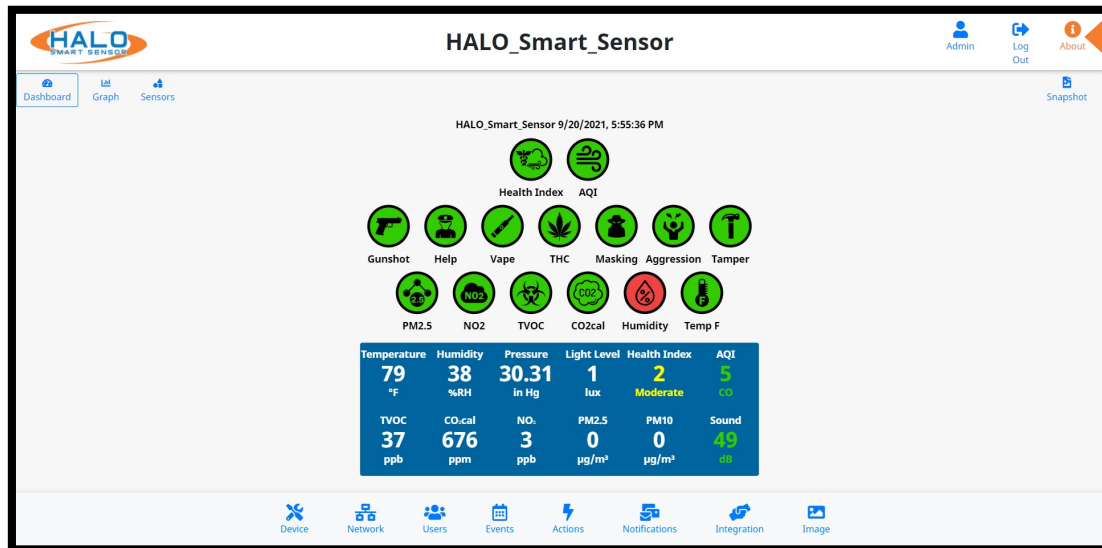
All setting changes performed in this section are committed by clicking the “Save Changes” button.

Settings can be restored to their default values by clicking the “Defaults” button.

[Save Changes](#)
[Defaults](#)
[Close](#)

## ABOUT

Navigate to the About page, from here the selection options are “Device Info” and “Legal.”



## DEVICE INFO INCLUDES:

- Model Version
- Firmware Version
- Device MAC
- Device Serial #
- Ethernet MAC
- IPV4 & IPV6 IP Addresses
- If Wi-Fi is enabled:
  - IP of Wi-Fi Adapter
  - MAC of Wi-Fi Adapter
- CO2 Serial # (Depending on Model)

## LEGAL

Selecting the “Legal” link will open a pop-up. This pop-up includes a link to “View Licenses” opening a new page to view all third-party licenses.

Device Info

**Halo Smart Sensor**  
**Model: HALO-2C**

Firmware version: 2.6  
Build: 14.173-3  
MAC address: b0-b3-53-d0-31-b1  
Serial number: 25AA210819-129

Ethernet:  
IPv4: 172.16.16.36 mask 255.255.255.0  
IPv6: fe80::9d5b:79ee:5634:dd02 prefixlen 64  
MAC: b0:b3:53:d0:31:b1

WIFI:  
MAC: e4:5f:01:99:f4:48

Calibrated CO2 sensor ser# 165435144616727

Halo code built: Fri 29 Apr 2022 08:39:46 PM EDT  
HW Rev: 2.5  
FW Base: 3.2  
Flash Info: SD 11/2020 hw:8 fw:0 man:3 n:SA16G oem:21316 #:706793610  
Firmware installed: 5/2/2022, 4:47:44 PM  
Last bootup: 5/7/2022, 8:54:57 AM

Copyright © 2018-2022, IPVideo Corporation  
Patent [www.ipvideocorp.com/patents](http://www.ipvideocorp.com/patents)

Close

## DEVICE MANAGEMENT

The Device Settings page provides access and adjustment to Date and Time, Device Name, Presets, Reset Config, Reboot Device, Firmware Upload, Config Upload and Download, Temperature Offset, Cloud Connection, and Log Download.

### DEVICE NAME

The Device Name is going to appear in every notification and is used to identify the location of the HALO. Choosing a name that makes this identification easy is important. Ex.: High School Boys West Bathroom

### PRESET

Preset includes the current default events and live view. Load a preset option after a firmware update for current signatures updates. Loading a preset will erase any custom Live View, Events, and Actions made prior.

### RESET CONFIG

Resets the HALO back to the current firmware default settings.

### REBOOT DEVICE

Reboots the HALO Device. Do NOT remove power while HALO is rebooting.

### COUNTRY

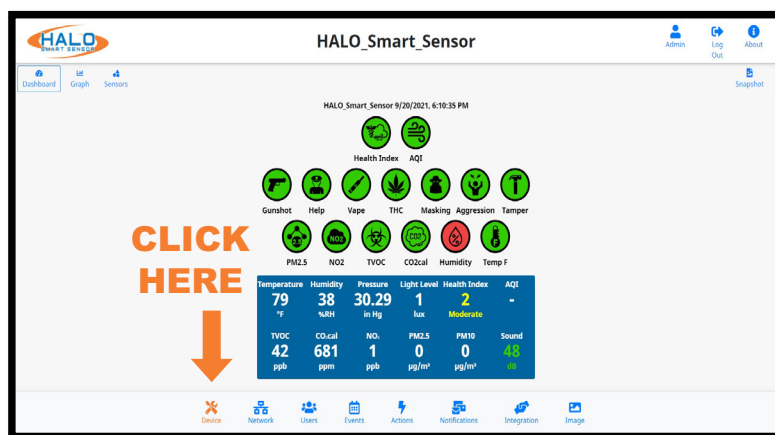
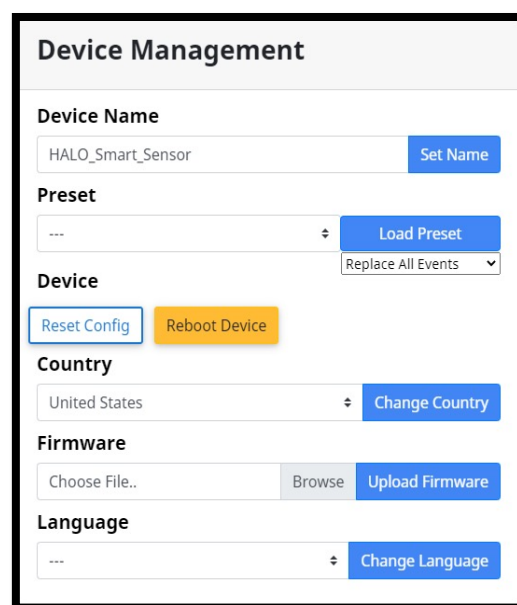
Sets the HALO to standards for selected Country

### FIRMWARE

Prior to updating firmware, it is best practice to document any changes made to thresholds and advanced conditions.\* These changes can be re-programmed into HALO once the update is complete. Choose the current firmware file and select "Upload Firmware," this firmware can be downloaded from: <https://halodetect.com/resources/software-tools/>. After upgrade, click the dropdown menu next to the "Load Preset" button and select "Security\_And\_AQI" then click the "Load Preset" button. Firmware can be updated to multiple HALOs at once using the HALO Device Manager, see separate HDM guide.

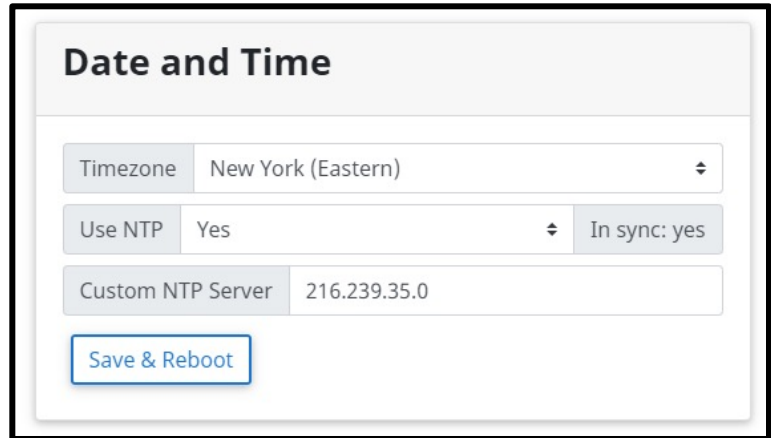
### LANGUAGE

Depending on which Firmware the HALO device is running, English, Japanese, and other languages are available.

## DATE AND TIME

Setting the date and time can be done by manually setting it or using an NTP server. If that server is online the HALO must have internet access. Once settings are input, select the “Save & Reboot” button to commit the settings and reboot the HALO.



**Date and Time**

Timezone: New York (Eastern)

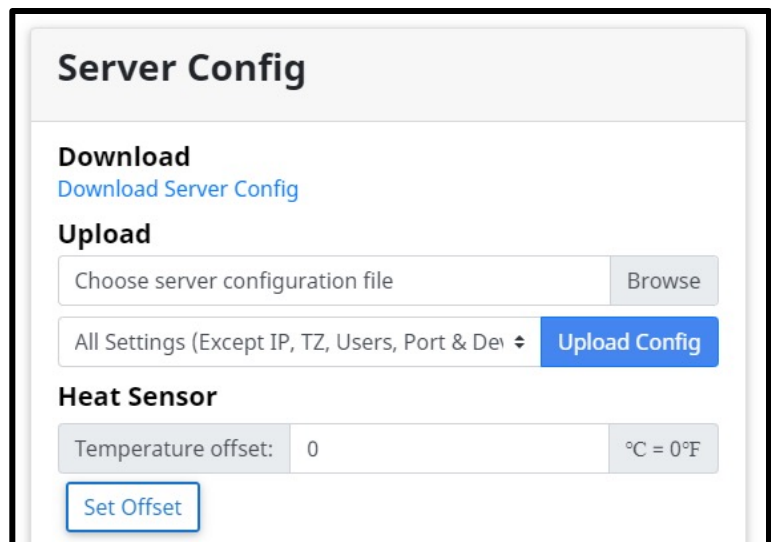
Use NTP: Yes In sync: yes

Custom NTP Server: 216.239.35.0

[Save & Reboot](#)

## SERVER CONFIG

The “Download Server Config” button will download all HALO settings except User, Time Zone, and IP information to a file. This file can be used as a backup or template for other HALOs. The “Upload Config” button will load selected settings from a file that was previously downloaded from a HALO. Choosing from the settings dropdown will identify what is loaded into the HALO from that file.



**Server Config**

**Download**  
[Download Server Config](#)

**Upload**  
Choose server configuration file Browse

All Settings (Except IP, TZ, Users, Port & Dev) [Upload Config](#)

**Heat Sensor**  
Temperature offset: 0 °C = 0°F

[Set Offset](#)

## HEAT SENSOR

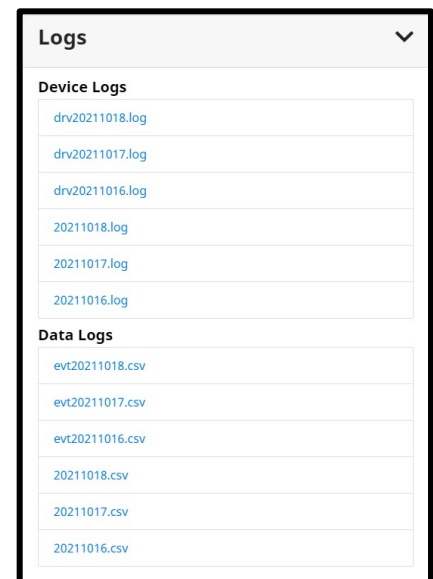
Used to offset temperature displayed, measured in Celsius. Positive or negative numbers can be used. Commit the value by selecting “Set Offset.”

For units placed in the ceiling, it is strongly advised to add a temperature offset to more accurately reflect the room temperature. Air circulation is less prominent on ceilings which allows warmer air to pool around the sensor.

## DEVICE LOGS

All logs are saved as csv files. They are kept for two days and deleted on the third, hence every type of log file has three downloads for three separate days. These files are stored in the volatile memory so they will be lost if power is removed from the device. Log files are named with the Year, Month, and Date for when the data was saved.

Under “Device Logs” there is data saved at “drvYYYYMMDD.log” for sensor driver log files and “YYYYMMDD.log” for main HALO log files.



**Logs**

**Device Logs**

- drv20211018.log
- drv20211017.log
- drv20211016.log
- 20211018.log
- 20211017.log
- 20211016.log

**Data Logs**

- evt20211018.csv
- evt20211017.csv
- evt20211016.csv
- 20211018.csv
- 20211017.csv
- 20211016.csv

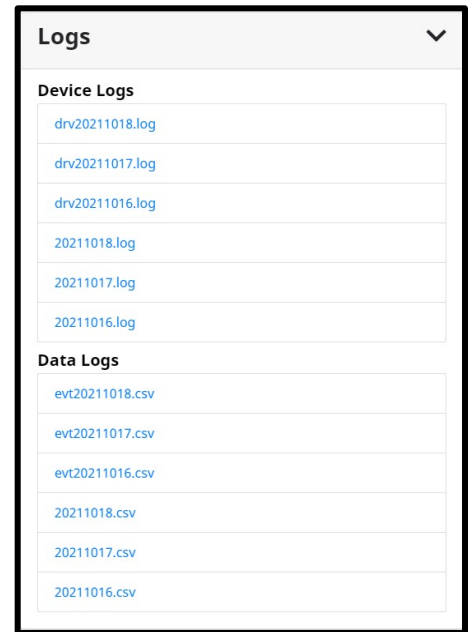
## DATA LOGS

Data Logs save data from every sensor and every signature. Data logs with the “evt” prefix will display a record of data every second and is converted to an easy-to-read format. Each of the three files contains 24 hours of data and is composed of over 1 million data points. The log files without the “evt” prefix are made of raw data, their recording interval is every 15 seconds by default. These are typically going to be used for diagnostic review as they are not as easily interpreted.

Signatures contain a “Set” column next to the core data point indicating if the threshold was met for that event.

### Set Values:

The set column in data logs is useful for quick analysis of events. It is next to the sensor reading in an evtYYMMDD.csv log and tells the user if the value passed its threshold to trigger an event. The possible values for the set column are 0, 1, 3, 4, or 8 for a real event.



Threshold for PM2.5 is 60, Vape is 58

Time	Timestamp	e-PM2.5	e-PM2.5-set	e-Vape	e-Vape-set
10/27/202	1.64E+12	72	3	57.23	0
10/27/202	1.64E+12	71	3	59.13	1

- If there is no event the set value equals **“0”** for **no event**.
- If an event goes off the set value equals **“1”** for **start of event**.
- After an event goes off the set value equals **“3”** for **continue**. This lasts 30 seconds and is in place to make it hard to miss an event when watching the data during a live view.
- If an event is occurring for more than 30 seconds the set value equals **“4”** for **stretched event**.
- Once an event ends the value equals **“8”** for **end**.

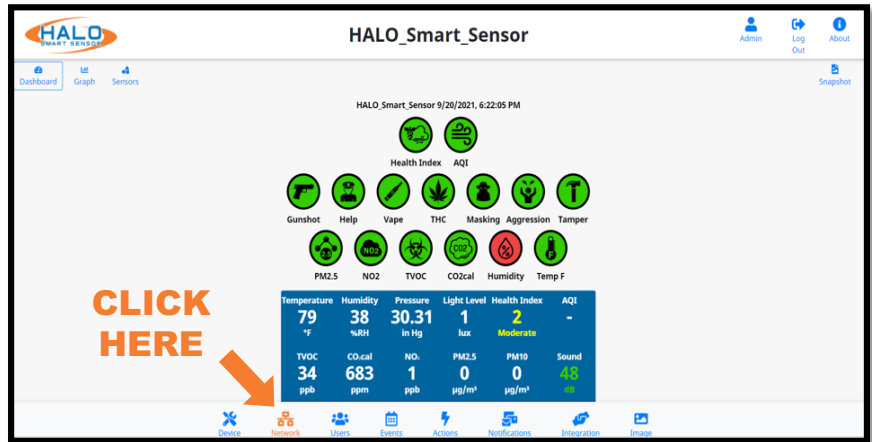
### Test Set Values:

It is possible to test an event as seen in the “Actions” settings discussed later on page 33. For a test event, the set value will be ten times the value of a normal event. For example, when a test occurs the set value “10” will indicate a “test event has started”. Even though tests only last 10 seconds the value 30 for “continued test event” will last 30 seconds. As stated earlier this is to give someone viewing the data live enough time to see data changes. There will never be a 40- set value for a test event because tests end after 10 seconds but there will be an “80” value for the “end of a test event”.

If a real event happened to occur at the same time as a test event the regular value and the test value will be added together. For instance, if an event and test happened to start at the same time the value would be 11 (10 + 1). If a true event occurred while a test event was underway the value would be 31, then 33 or 83 a second later.

## NETWORK

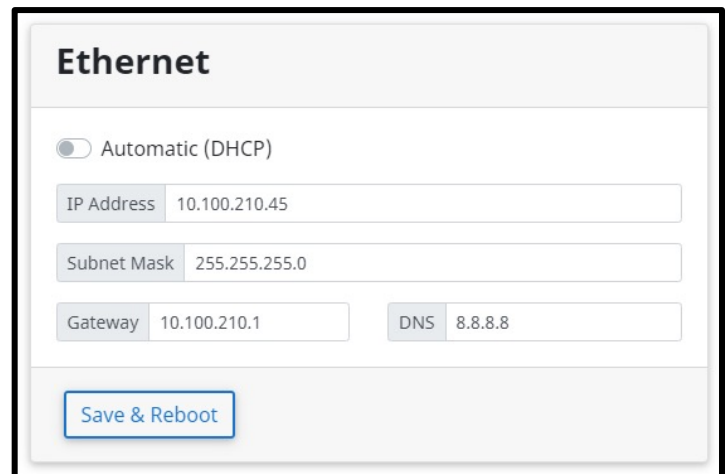
The “Network” page provides access and adjustment to Ethernet, Wi-Fi, HTTP / HTTPS, BACnet, and Cloud settings.



## ETHERNET

If the facility network requires the use of Static IP Addresses, obtain the IP address, Sub-net Mask, Gateway, and DNS to be used for this specific Device, and follow these steps.

- Set the Automatic (DHCP) to Off to enable use of a Static Address.
- Enter the desired IP Address, Netmask (Sub-net Mask), & Router (Gateway) in the format shown.
- Enter the DNS Server IP Address or Domain in the format shown.
- Click “Save & Reboot” to commit these settings.

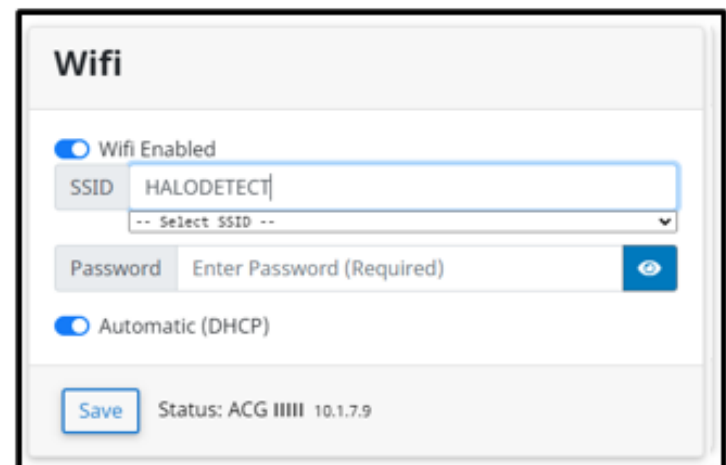


## WI-FI

Wi-Fi is turned off by default and can be enabled, this can be set up as Automatic (DHCP) or Static. The SSID must be typed in exactly and is case sensitive, as is the password.

Click “Save & Reboot” to commit these settings.

If successful connection to a Wi-Fi network is completed, the “About” Page will show an assigned IP address for Wi-Fi.



## HTTP / HTTPS

HTTP / HTTPS settings specify the communication port for the devices webpages and the authentication protocol used to secure the connection. All browser connections and API calls will have to adhere to these definitions.

HTTP Port 80 is defined by default and HTTPS Port 443 is defined by default; however, these settings can be edited to define the preferred port.

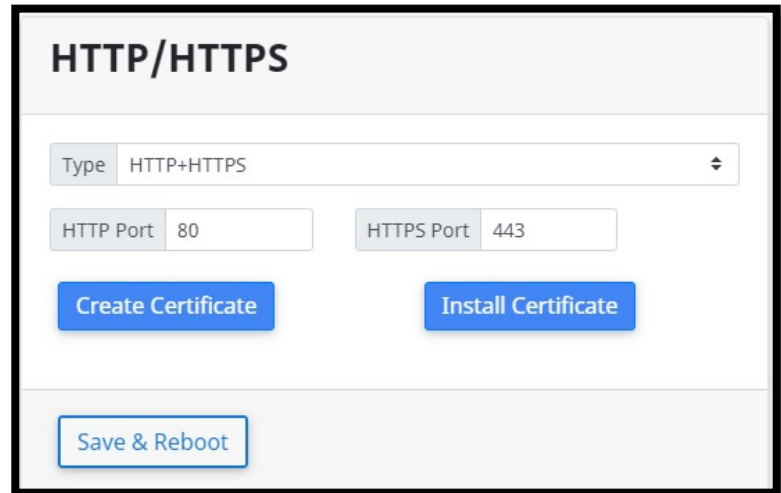
Selecting the HTTPS or HTTP+HTTPS Type reveals the Create Certificate and Install Certificate buttons.

## CREATE CERTIFICATE

HALO will always create a self-signed certificate, so HTTPS is available. The certificate contains IPv4 and IPv6 addresses, and the HALO device name. Create Certificate updates the certificate in case the HALO device name or IP addresses change.

## INSTALL CERTIFICATE

Install Certificate allows user to upload a certificate and private key PEM file pair.



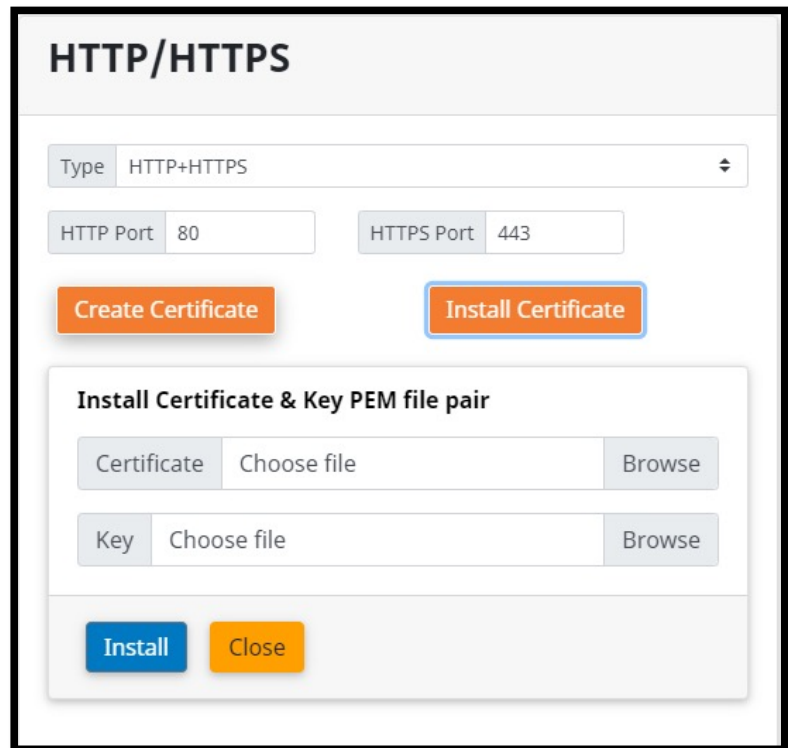
**HTTP/HTTPS**

Type: HTTP+HTTPS

HTTP Port: 80      HTTPS Port: 443

Create Certificate      Install Certificate

Save & Reboot



**HTTP/HTTPS**

Type: HTTP+HTTPS

HTTP Port: 80      HTTPS Port: 443

Create Certificate      Install Certificate

**Install Certificate & Key PEM file pair**

Certificate: Choose file      Browse

Key: Choose file      Browse

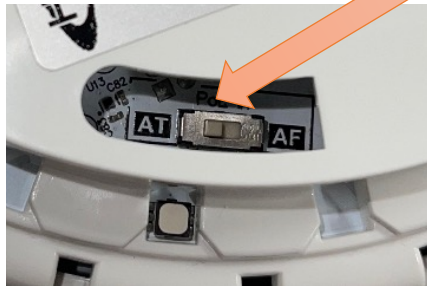
Install      Close



## DOWNSTREAM POE

The HALO-3C provides a port which supplies 802.3af power and network to a downstream device.

To ensure PoE downstream allocation, confirm the dip switch is set to AT power on the upstream HALO-3C. If it is necessary to toggle the switch in either direction be certain to **REMOVE THE DEVICE FROM POWER.**



With the upstream HALO-3C in AT power mode, you can connect an ethernet cable from the output RJ45 into an 802.3 af PoE device.

The downstream device won't power up until the upstream HALO-3C has initialized.

You can confirm this by clicking the About Box in the HALO-3C GUI and viewing the state of Downstream PoE.

**NOTE:** In a rare case, if a power source does not recognize an AT PoE request. This will require the manual switch to be set to AF on the HALO.

**NOTE:** If the upstream HALO-3C is set to AF it does not support downstream PoE devices.

\*Check to be sure the downstream device is 802.3af compliant.

## Device Info

Halo Smart Sensor  
Model: HALO-3C

Firmware version: 2.6.2

Build: 5.212-3

MAC address: b0-b3-53-d1-00-ec

Serial number: 32220811-038

### Ethernet:

IPv4: 10.1.6.172 mask 255.255.248.0

IPv6: fe80::3e90:dc1b:ea32:918c prefixlen 64

MAC: b0:b3:53:d1:00:ec

### WIFI:

MAC: e4:5f:01:53:3b:95

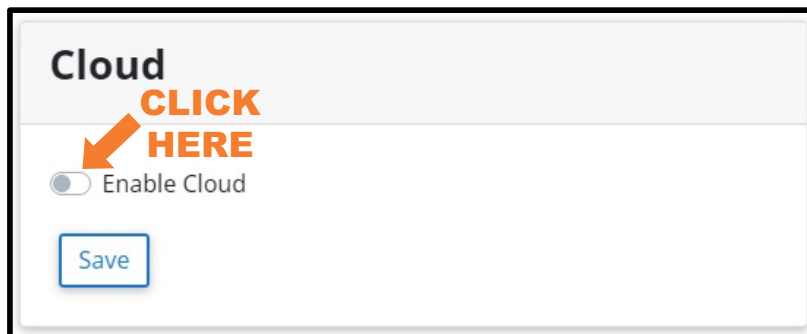
Downstream Ethernet Power: On



## CLOUD REGISTRATION

To connect the HALO to the Cloud Portal, contact your Authorized Reseller to register the HALOs.

1. Once you receive your Registration String via email use the steps below to connect.
2. Click "Enable Cloud"
3. Click "Register"
4. Confirm Pop-up "Are you sure you want to register this HALO on the cloud?" by pressing "OK"
5. Enter the "Registration String". Click "OK"
6. A popup will appear notifying you the registration is successful. Click "Save"
7. All HALOs that are part of a single site would share the same HALO Registration String.
8. Repeat for all HALOs that are being enrolled (this can be done using HDM as well to multiple HALOs at one time).
9. Initial Login Information and instructions will be sent to you.

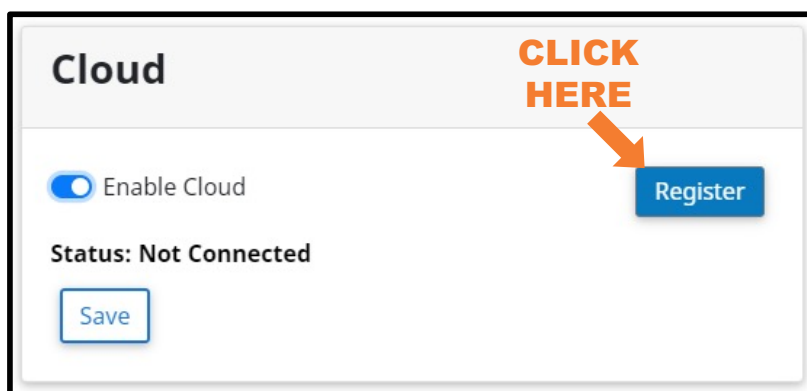


**Cloud**

**CLICK HERE**

☐ Enable Cloud

Save



**Cloud**

**CLICK HERE**

☒ Enable Cloud

Status: Not Connected

Register

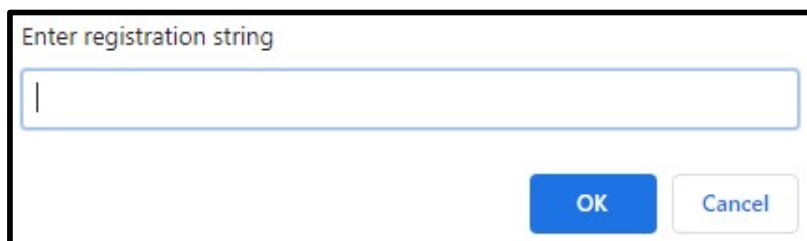
Save



Are you sure you want to register this Halo on the cloud?

**CLICK HERE**

OK Cancel

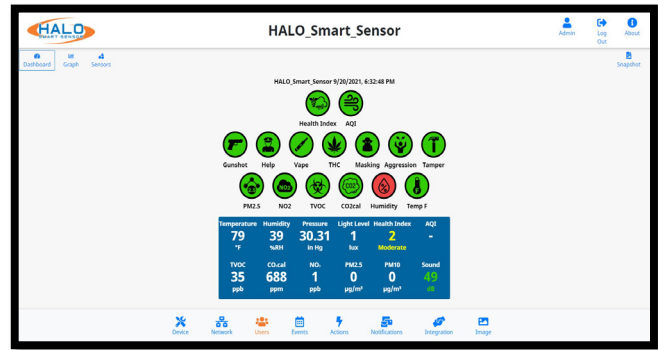


Enter registration string

OK Cancel

## USER MANAGEMENT

The “Users” page is where users can be added and removed. The user-name and password assigned here will be required to access the HALO. If the admin user-name and password is forgotten, a factory reset must be done for recovery. Users can be assigned either the role of Admin or Viewer. Selecting the role will indicate the username and password requirements. The default Username is “admin”, and the default password is “changeme”. HALO contains a security feature that requires a user to generate a new means of authentication before access is granted to the device for the first time.



↑  
**CLICK  
HERE**

### Admin:

Full Control, can make any configuration changes.

### Viewer:

Can view Dashboard, Graphs, and Sensors only. Cannot make any configuration changes. Snapshots and limited view of the “About” page are also available.

HALO restricts access to the built-in web server by usernames and passwords at two different levels, “Admin” and “Viewer”.

Username Requirements for Admins:

- 5+ Characters
- No Spaces or Special Characters

Password Requirements for Admins:

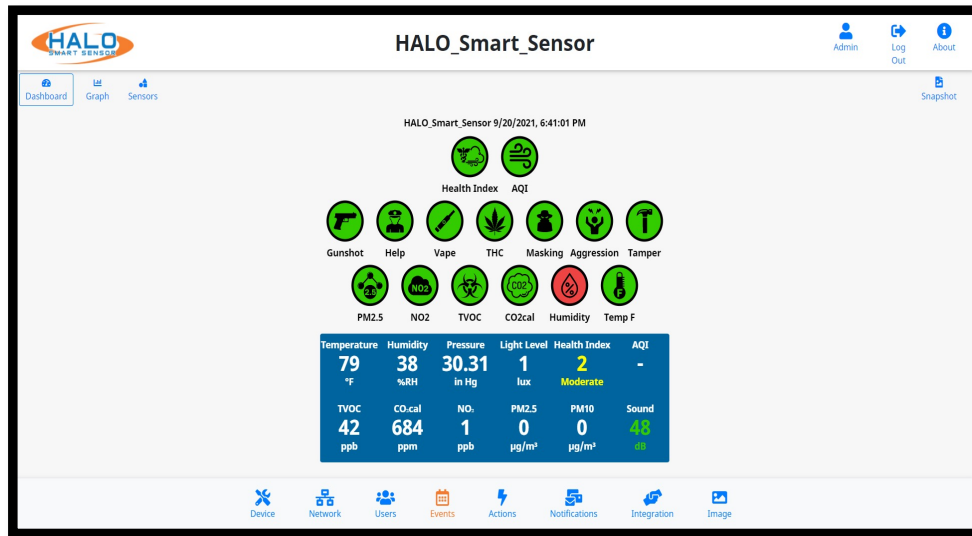
- 8+ Characters
- 1+ Lowercase Letter
- 1+ Uppercase Letter
- 1+ Numeric Character
- 1+ Special Character (!@#\$\$%^&\*\_- are allowed)
- Cannot Contain Username

### Administrator Timeout:

Administrators are automatically timed out with no activity after a specified time period set in “User Management.” This field is measured in minutes and is defaulted to “10” minutes. Changing this field to “0” will disable the timeout feature.

## EVENTS

The “Events” page is where event signatures are added, removed, and adjusted. Signatures are created from individual or multiple data sources, thresholds, timing, and machine learning algorithms.



↑  
**CLICK  
HERE**

Adding a new event is done by Clicking “Add Event” > Fill in an event identifier “Unique ID” > Selecting a data source from the drop down > Setting a “Threshold” > “Click “Save Changes” to apply. The Event Identifier “Unique ID” must not contain special characters or spaces.

The screenshot shows the 'Events' management interface. It features a table with columns: Event Identifier, Data Source, Threshold, and Pause. The 'Add Event' button is circled in red. Below the table, there is a note: 'Advanced conditions can be entered here'.

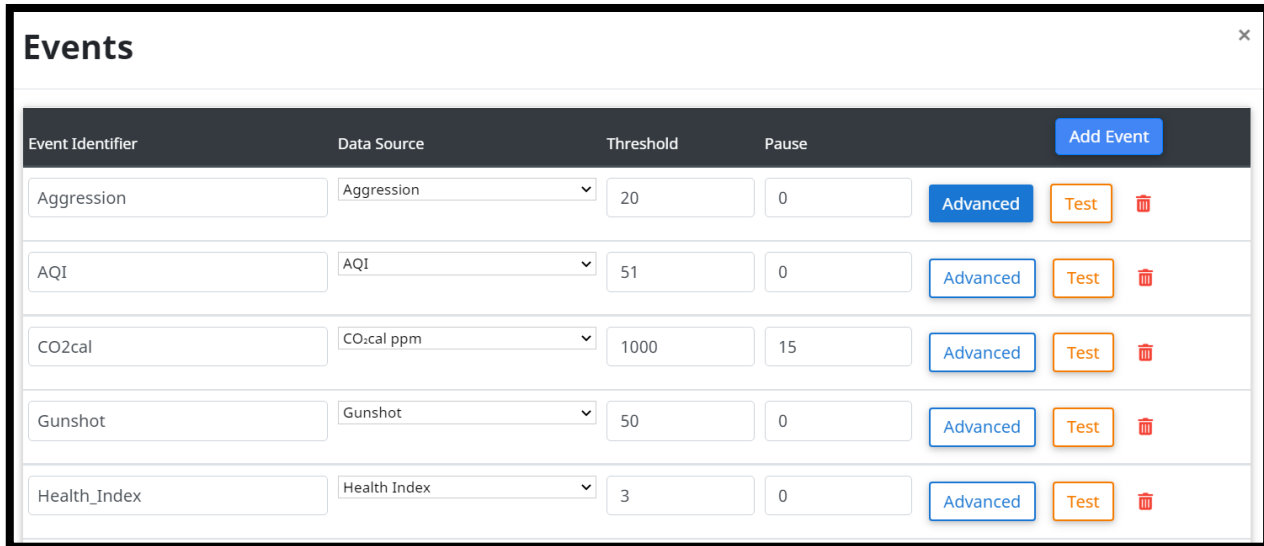
Event Identifier	Data Source	Threshold	Pause	
Unique id (no prefix)				Advanced Test
Aggression	Aggression	20	0	Advanced Test
AQI	AQI	51	0	Advanced Test

Each event has a corresponding advanced condition associated to it. When the “Advanced” button is filled in blue, the event has an existing condition applied. Click the blue question mark to reveal a detailed guide on available conditions. These can be edited and allow for filtering and combining values numerically and logically. “Click “Save Changes” to apply.

## EVENTS CONTINUED

### Pause Option

A Pause option has been introduced to the Events Menu. This will allow users to define a pause value (in minutes) between a reoccurring event caused by teetering above and below the set threshold.

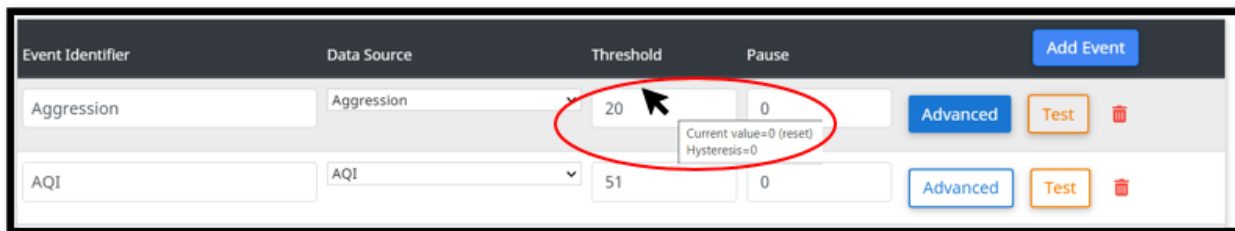


Event Identifier	Data Source	Threshold	Pause	Add Event		
Aggression	Aggression	20	0	Advanced	Test	
AQI	AQI	51	0	Advanced	Test	
CO2cal	CO2cal ppm	1000	15	Advanced	Test	
Gunshot	Gunshot	50	0	Advanced	Test	
Health_Index	Health Index	3	0	Advanced	Test	

**Hysteresis** Further aiding in the reduction of repeating teetering events a default hysteresis for each sensor type has been implemented in the Events Menu. Once an event is triggered a new event will not occur until the sensor value drops below the trigger value minus the hysteresis value and then once again exceeds the trigger value.

### Examples:

- hysteresis 0 (prior versions): Temp threshold 80 triggers when temp is  $\geq 80$ , stops when temp  $< 80$ .
- hysteresis 2: Temp threshold 80 triggers when temp is  $\geq 80$ , stops when temp  $< 78$ .

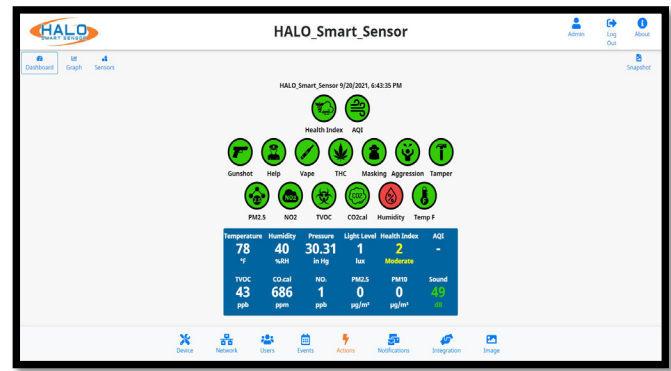


Event Identifier	Data Source	Threshold	Pause	Add Event		
Aggression	Aggression	20	0	Advanced	Test	
AQI	AQI	51	0	Advanced	Test	

Current value=0 (reset)  
Hysteresis=0

## ACTIONS

The “Actions” page is used to create an action plan for each event. Each event has an individual action plan. Check the box or drop-down to activate each action.



↑  
**CLICK HERE**

Event Identifier	Email		Integration		Cloud Enable	Relay	LED			Sound	Actions
	Set	Reset	Set	Reset			Color	Pattern	Priority		
Aggression	<input checked="" type="checkbox"/>	<input type="checkbox"/>	<input checked="" type="checkbox"/>	<input type="checkbox"/>	<input checked="" type="checkbox"/>	---	White	Steady	High	---	<a href="#">Test</a>
AQI	<input checked="" type="checkbox"/>	<input type="checkbox"/>	<input type="checkbox"/>	<input type="checkbox"/>	<input checked="" type="checkbox"/>	---	---	Steady	High	---	<a href="#">Test</a>
CO2cal	<input checked="" type="checkbox"/>	<input type="checkbox"/>	<input type="checkbox"/>	<input type="checkbox"/>	<input checked="" type="checkbox"/>	---	---	Steady	High	---	<a href="#">Test</a>
Gunshot	<input checked="" type="checkbox"/>	<input type="checkbox"/>	<input type="checkbox"/>	<input type="checkbox"/>	<input checked="" type="checkbox"/>	---	Blue	Strobe	High	---	<a href="#">Test</a>
Health_Index	<input checked="" type="checkbox"/>	<input type="checkbox"/>	<input type="checkbox"/>	<input type="checkbox"/>	<input checked="" type="checkbox"/>	---	---	Strobe	High	---	<a href="#">Test</a>

**Email Set (SMTP):** Notification via email (or text) that a signature met the threshold.

**Email Reset (SMTP):** Notification via email (or text) that a signature has receded below the threshold.

**Integration Set (TCP / HTTP):** Message to 3rd party system that a signature met the threshold.

**Integration Reset (TCP / HTTP):** Message to 3rd party system that a signature has receded below the threshold.

**Relay 1 or 2:** Select for the relay to change state when the threshold is met. Options include “ON” for the duration of the threshold being

met or a selected time period ranging from 5 – 60 seconds.

**LED Color / Pattern / Priority:** Set the color that the multicolor LED on the front of HALO changes to and the behavior of the LED pattern.

**Sound:** Select a preloaded .wav sound file or upload a custom .wav file for selection. Speaker volume can also be selected here, this setting applies to all actions.

**Cloud:** Notification via cloud portal that an event has occurred.

**NOTE: Cloud column is only available when the HALO is actively registered and connected to the Portal.**

## WAV FILES MANAGEMENT

Wav files can be played when an event is triggered. Not every event will have this set by default. Wav files can be chosen by selecting the pulldown under Sound. NOTE: the wav file will play from the HALO device.

Event Identifier	Email		Integration		Cloud Enable	Relay	LED			Sound	Actions
	Set	Reset	Set	Reset			Color	Pattern	Priority		
Aggression	<input checked="" type="checkbox"/>	<input type="checkbox"/>	<input checked="" type="checkbox"/>	<input type="checkbox"/>	<input checked="" type="checkbox"/>	---	White	Steady	High	---	<a href="#">Test</a>
AQI	<input type="checkbox"/>	<input type="checkbox"/>	<input type="checkbox"/>	<input type="checkbox"/>	<input type="checkbox"/>	---	---	Steady	High	<div> <div>---</div> <div> 440hz.wav  AQI_Levels_Exceeded.wav  Aggression_Detected.wav  Carbon_Dioxide_Levels_Exceeded.wav  Carbon_Monoxide_Levels_Exceeded.wav </div> </div>	
CO2cal	<input type="checkbox"/>	<input type="checkbox"/>	<input type="checkbox"/>	<input type="checkbox"/>	<input type="checkbox"/>	---	---	Steady	High		

## CUSTOM WAV FILE

HALO can accommodate custom wav files. At the bottom of the Actions page at Upload Sound File select Browse to import a custom wav file.

Vape
☒
☐
☒
☐
☒
---
Greer
Steady
High
Particulate\_Levels\_Exceeded.wav
[Test](#)

Speaker Volume: 84%

Upload sound file

Choose Sound File
Browse
Upload

Delete sound file

---File To Delete---
Delete

[Save](#)
[Close](#)

Speaker volume can be adjusted, and custom sound files can be uploaded or deleted. Sound files must be in .wav file format.

## LED PATTERN

LED Patterns can be displayed when an event is triggered. Not every event will have this set by default. LED Patterns can be chosen by selecting the pulldown under LED Pattern.

**Steady:** The LED stays on for the duration of the event

**1, 2, 5 Sec Blink:** The LED flashes on and off every 1,2,5 seconds

**1/2, 1, 2, 5 Sec, 1 min Once:** The LED flashes once for 1/2,1,2,5 seconds and then turns off

**Chase Right:** The LED spins in a clockwise circle with a fading tail. **(HALO-3C exclusive)**

**Chase Left:** The LED spins in a counter-clockwise circle with a fading tail. **(HALO-3C exclusive)**

**Breathe:** The LED fades on and off in a smooth curve. **(HALO-3C exclusive)**

**Strobe:** The LED flashes on for a fraction of a millisecond every second. **(HALO-3C exclusive)**

## Actions

Event Identifier	Email Set	Email Reset	Integration Set	Integration Reset	Cloud Enable	Relay	Color	LED Pattern	Priority	Sound	Actions
Aggression	<input checked="" type="checkbox"/>	<input type="checkbox"/>	<input checked="" type="checkbox"/>	<input type="checkbox"/>	<input checked="" type="checkbox"/>	---	White	Steady	High	---	<a href="#">Test</a>
AQI	<input type="checkbox"/>	<input type="checkbox"/>	<input type="checkbox"/>	<input type="checkbox"/>	<input type="checkbox"/>	---	---	Steady	High	---	<a href="#">Test</a>
CO2cal	<input type="checkbox"/>	<input type="checkbox"/>	<input type="checkbox"/>	<input type="checkbox"/>	<input type="checkbox"/>	---	---	1 Sec Blink	High	---	<a href="#">Test</a>
EXTERNAL_INPUT	<input type="checkbox"/>	<input type="checkbox"/>	<input type="checkbox"/>	<input type="checkbox"/>	<input checked="" type="checkbox"/>	---	Red	2 Sec Blink	High	---	<a href="#">Test</a>
Gunshot	<input type="checkbox"/>	<input type="checkbox"/>	<input type="checkbox"/>	<input type="checkbox"/>	<input type="checkbox"/>	---	Blue	5 Sec Blink	High	---	<a href="#">Test</a>
								1/2 Sec Once			
								1 Sec Once			
								2 Sec Once			
								5 Sec Once			
								1 Min Once			
								Chase Right			
								Chase Left			
								Breathe			
								Strobe			

## NOTIFICATIONS

The “Notifications” page has all fields necessary to edit email contents and connect to an email account using SMTP. The Email Contents section dictates what the notification will look like when sent via email and email to text.

The Subject and Body fields can be populated with information to be extracted from the HALO upon an event and can also include character for character information. By placing the specified fields in “%” it will select them and place the current value in that position.

The **Set Delay** (measured in seconds) will reduce the possibility of getting multiple messages around the same event. The measured values must recede below the established threshold for this time period and then increase above the threshold again for a 2nd alarm.

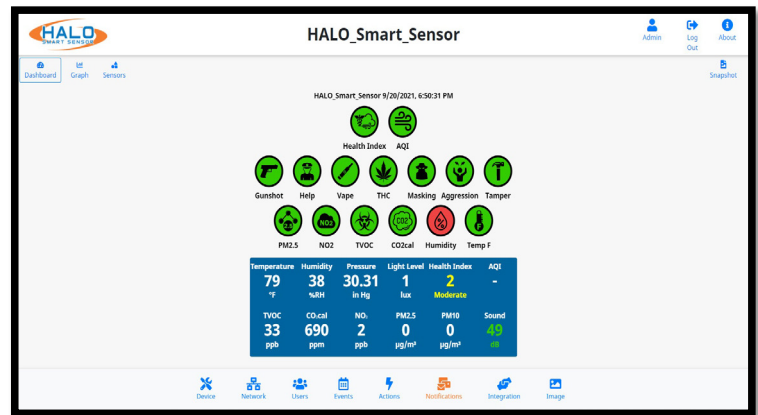
The HALO uses SMTP (simple mail transfer protocol) to send out alarms.

- We recommend using your own email providers SMTP.
- If you are a Gsuite user, we recommend using the SMTP relay service.
  - <https://support.google.com/a/answer/176600?hl=en>

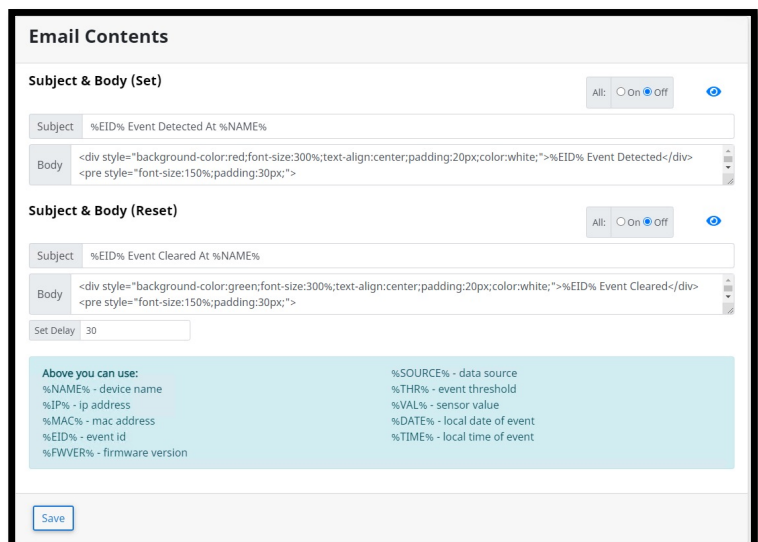
**Do not use your personal email for SMTP username. Having or creating a new email address to send the emails for this purpose is recommended.**

If you cannot make an SMTP account through your email provider. There are several different free SMTP providers. Gmail currently has a free SMTP account with several different restrictions. See section “*Use the Gmail SMTP server*” section here <https://support.google.com/a/answer/176600?hl=en>.

One of the restrictions is that less secure apps will turn off when Gmail sees it's not in use for a certain period <https://myaccount.google.com/lesssecureapps>



↑  
**CLICK  
HERE**



**Email Contents**

**Subject & Body (Set)** Alt: On Off

Subject: %EID% Event Detected At %NAME%

Body: <div style="background-color:red;font-size:300%;text-align:center;padding:20px;color:white;">%EID% Event Detected</div><pre style="font-size:150%;padding:30px;">

**Subject & Body (Reset)** Alt: On Off

Subject: %EID% Event Cleared At %NAME%

Body: <div style="background-color:green;font-size:300%;text-align:center;padding:20px;color:white;">%EID% Event Cleared</div><pre style="font-size:150%;padding:30px;">

Set Delay: 30

**Above you can use:**

%NAME% - device name	%SOURCE% - data source
%IP% - ip address	%THR% - event threshold
%MAC% - mac address	%VAL% - sensor value
%EID% - event id	%DATE% - local date of event
%FWVER% - firmware version	%TIME% - local time of event

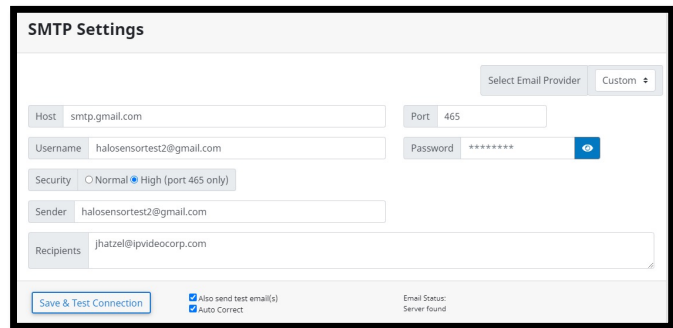


The HALO uses SMTP (simple mail transfer protocol) to send out alarms.

- Select the email provider you use to see if there is a template to help fill out information.
- You can use your internal SMTP server.
- If you are using an external SMTP server, please follow their SMTP setup documentation. If you are a GSuite user, we recommend using Google SMTP relay service.
- If your SMTP service is set for port 25 (usually no credentials) be sure to leave username and password clear.
- Recipients can be comma-separated and can be emails or phone numbers; If you have issues sending SMS or MMS over SMTP, please make sure the number and format is correct. Contact the cell provider if you still have issues.

ex: example@gmail.com, example2@gmail.com

ex: HALO@ipvideocorp.com, 9171231234@txt.att.net



Provider Email-to-SMS Address Formats:

**AT&T:** number@txt.att.net (SMS) **AND** number@mms.att.net (MMS)

**Sprint:** number@messaging.sprintpcs.com (SMS) **AND** number@pm.sprint.com (MMS)

**T-Mobile:** number@tmomail.net (SMS **AND** MMS)

**Verizon:** number@vtext.com (SMS) **AND** number@vzwpx.com (MMS)

Check “Also Send Test Email(s)” and click “Save & Test Connection.” If test passes, you should get email/text, if test failed look at the options below.

- Firewall is blocking the communication between HALO and SMTP server.
- SMTP setting parameters are wrong.
- HALO might not have internet access (external SMTP)
- IMAP is disabled on your Gmail account (external SMTP)
- Gmail is suspicious of login. Simply login into Gmail and confirm that it was you that signed in.
- HALO has bad / wrong DNS, router, gateway, IP

## Email Contents

Administrators can choose to enter their own specific text in the Subject and Body fields and use the built-in placeholders to automatically generate informative messages. The placeholder strings that can be used are:

- %NAME%** Device name as specified in device settings
- %IP%** IP address assigned to HALO Smart Sensor unit
- %EID%** The event ID as specified on the event tab
- %THR%** The threshold of the event that was surpassed (numerical value)
- %VAL%** The sensor value
- %DATE%** Current date of the event
- %TIME%** Local time of the event

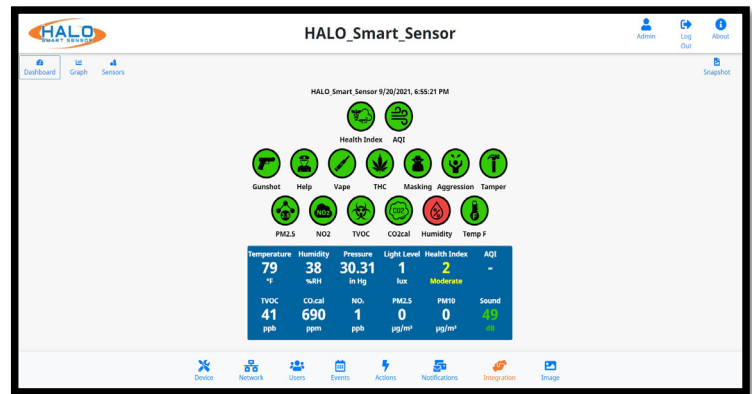
## INTEGRATION

The “Integration” page is where HALO makes connections to 3rd party products.

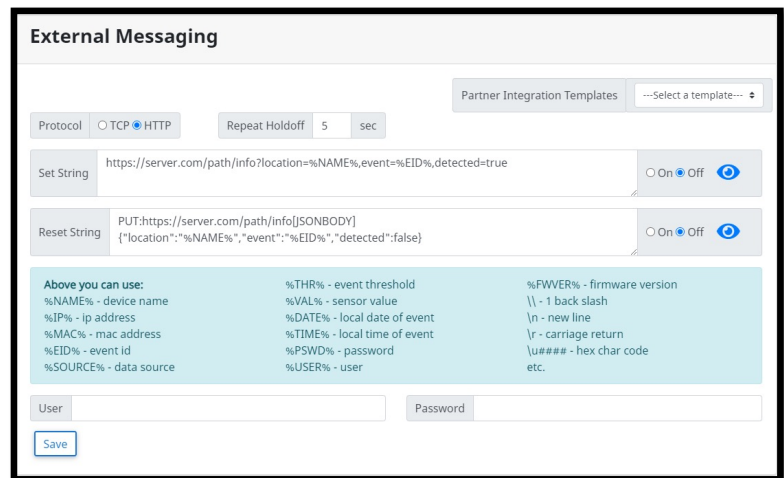
HALO has an open API and works with many 3rd party products including Surveillance, Access Control, Cloud, Building Management Systems, LED Lighting, Network Switching and many others. More details can be found in “Basic API and Advancement API documents”.

Integration works with the connections to 3rd party products and sends specified information upon an event. Individual product guides are available on the “Partner Integration Guides” section of the website.

HALO Smart Sensor can send ASCII Messages via TCP/IP Socket or HTTP to supported 3rd party platforms, <3IPVidea method of triggering defined “Events,” and associating HALO Smart Sensor “Events” with other products such as cameras.



CLICK  
HERE



**External Messaging**

Partner Integration Templates: ---Select a template---

Protocol: ☐ TCP ☒ HTTP Repeat Holdoff: 5 sec

Set String: `https://server.com/path/info?location=%NAME%,event=%EID%,detected=true` ☐ On ☒ Off

Reset String: `PUT:https://server.com/path/info[JSONBODY]` ☐ On ☒ Off

Below you can use:

%NAME% - device name	%THR% - event threshold	%FWVER% - firmware version
%IP% - ip address	%VAL% - sensor value	\\ - 1 back slash
%MAC% - mac address	%DATE% - local date of event	\n - new line
%EID% - event id	%TIME% - local time of event	\r - carriage return
%SOURCE% - data source	%PSWD% - password	\\##### - hex char code
	%USER% - user	etc.

User:  Password:

Select a template under **Partner Integration Templates** to input product specific settings such as Port and Protocol making the integration process easier.

Repeat Holdoff prevents multiple messages being sent from the same event. Its default value is 5 seconds so an event will not cause a message to be sent if it occurs less than 5 seconds from the start of a previous event.

Enter a **Set String** and click the **On** or **Off** radio button to enable or disable this notification. The **Set String** should identically match one that is defined in the 3rd party product. This will send a notification to the 3rd party product that an “Event” has been triggered.

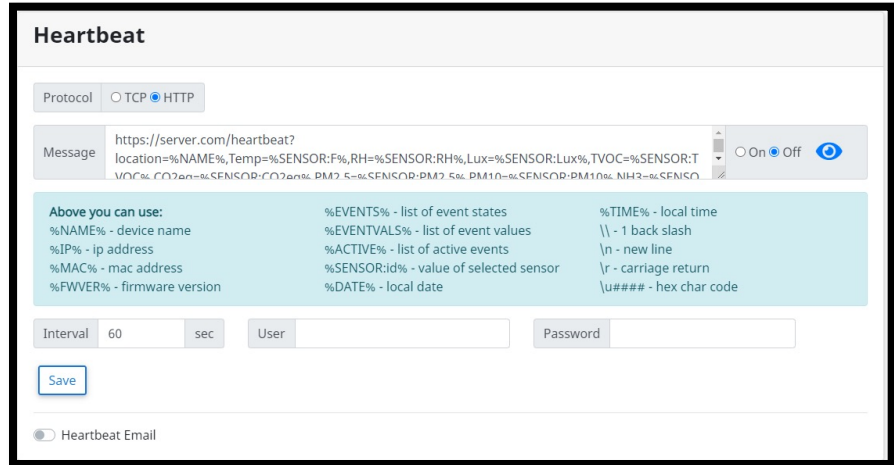
Enter a **Reset String** and click the **On** or **Off** radio button to enable or disable this notification. The **Reset String** should identically match one that is defined in the 3rd party product. This will send a notification to the 3rd party product that a sensor(s) defined in an Event has been reset.

Enter the IP Address of the 3rd party product in the **Address** field.

## HEARTBEAT


Heartbeat works with the connections to 3rd party products and sends specified information on a specified time interval. Individual product guides are available on the “Partner Integration Guides” section of the website.

Specify the **Protocol** used to transmit the event notification by clicking the TCP or HTTP radio buttons.



**Heartbeat**

Protocol ☐ TCP ☒ HTTP

Message `https://server.com/heartbeat?location=%NAME%,Temp=%SENSOR:F%,RH=%SENSOR:RH%,Lux=%SENSOR:Lux%,TVOC=%SENSOR:TVOC%,CO2an=%SENSOR:CO2an%,PM2.5=%SENSOR:PM2.5%,PM10=%SENSOR:PM10%,NH3=%SENSOR:PM10%` ☐ On ☒ Off 

Above you can use:		
%NAME% - device name	%EVENTS% - list of event states	%TIME% - local time
%IP% - ip address	%EVENTVALS% - list of event values	\\ - 1 back slash
%MAC% - mac address	%ACTIVE% - list of active events	\n - new line
%FWVER% - firmware version	%SENSOR:id% - value of selected sensor	\r - carriage return
	%DATE% - local date	\u#### - hex char code

Interval 60 sec User Password

☐ Heartbeat Email

Enter a **Message** to be sent, using the wildcards as listed below:

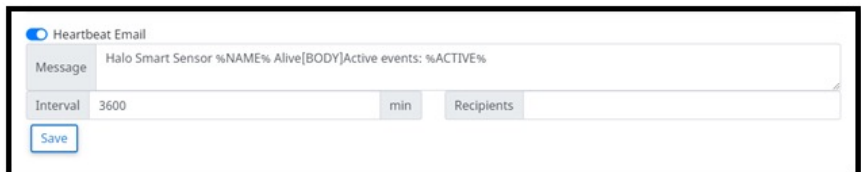
<b>%NAME%</b>	Device name as specified in device settings
<b>%IP%</b>	IP address assigned to HALO Smart Sensor unit
<b>%MAC%</b>	MAC address of the HALO Smart Sensor
<b>%EVENTS%</b>	List of current event states
<b>%DATE%</b>	Current date of the event
<b>%TIME%</b>	Local time of the event

Enter the Interval Seconds. This setting determines the frequency at which the Heartbeat message is sent, default value is 60 seconds.

Enter the IP Address of the Destination (listening) Server in the **Address** field.

Enter the **Port** that is set to listen to events on the Destination (listening) Server.

Turning on **Heartbeat Email** sends the user an update daily by default. This is in place for those who want to be constantly updated. It is also in place because certain email providers such as Gmail turn off less secure apps after an extended period with no email connection. As stated under Notifications, Gmail accounts need less secure apps turned on for email notifications. Heartbeat Email turned on prevents the connection from dying.



☒ Heartbeat Email

Message Halo Smart Sensor %NAME% Alive[BODY]Active events: %ACTIVE%

Interval 3600 min Recipients

### Less secure apps & your Google Account

If an app or site doesn't meet our [security standards](#), Google might block anyone who's trying to sign in to your account from it. Less secure apps can make it easier for hackers to get in to your account, so blocking sign-ins from these apps helps keep your account safe.

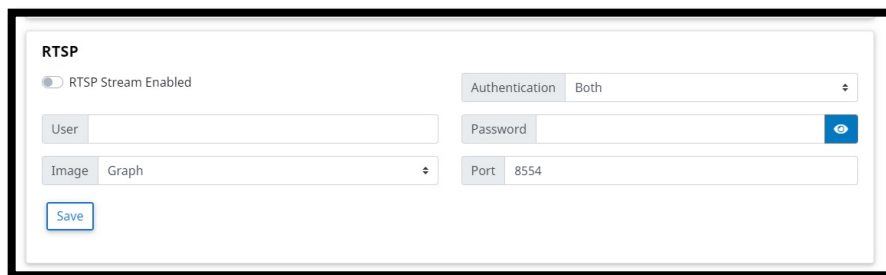
If "Less secure app access" is on for your account [^](#)

Because less secure apps can make your account more vulnerable, Google will automatically turn this setting off if it's not being used.

If "Less secure app access" is still on for your account, we recommend turning it off now and switching to [more secure apps](#).

## RTSP

RTSP (Real Time Streaming Protocol) can be used to stream the Live View to an RTSP supported platform.



- Click the button for “RTSP Stream Enabled” to turn on this feature.
- Select from the “Image” drop down menu either “Graph” or “Dashboard”. This will select the stream that will be sent over RTSP.
- Select a port number that is not already in use, default is “8554”.
- If authentication is desired, choose a “User” and “Password”.

## AUTHENTICATION

The options for Authentication are:

- None (Unsafe)
- Basic
- Digest
- Basic and Digest

Digest Authentication communicates credentials in an encrypted form by applying a hash function to the Username, the Password, a server “supplied once” value, the HTTP method, and the requested URI. Basic Authentication should generally only be used where transport layer security is provided such as HTTPS.

Click the “Save & Reboot” button to retain any settings changes.

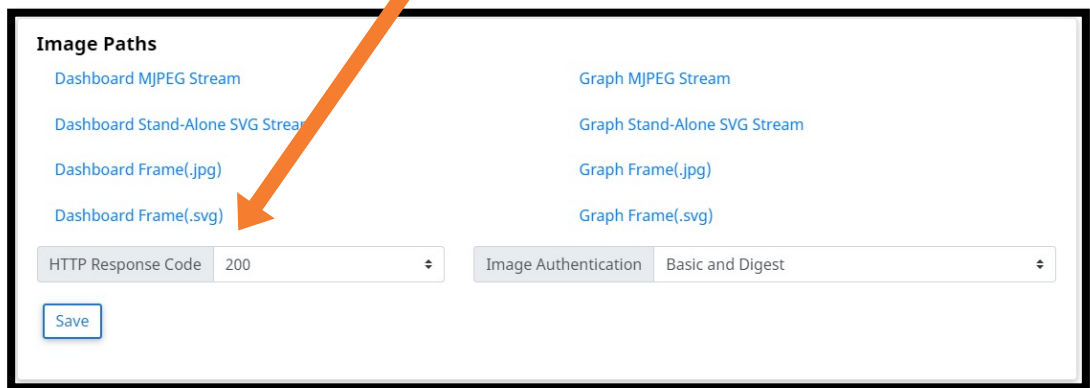
## PATHS

The defined paths will create a new tab in the web browser that will include the indicated stream or frame. These file paths can be used for streaming to other locations or devices. They include the links below:

- Dashboard MJPEG Stream
- Graph MJPEG Stream
- Dashboard Stand-Alone SVG Stream
- Graph Stand-Alone SVG Stream
- Dashboard Frame (.jpg)
- Graph Frame (.jpg)
- Dashboard Frame (.svg)
- Graph Frame (.svg)

### HTTP Response Code

Indicate whether an HTTP request has been successfully completed.



**Image Paths**

<a href="#">Dashboard MJPEG Stream</a>	<a href="#">Graph MJPEG Stream</a>
<a href="#">Dashboard Stand-Alone SVG Stream</a>	<a href="#">Graph Stand-Alone SVG Stream</a>
<a href="#">Dashboard Frame(.jpg)</a>	<a href="#">Graph Frame(.jpg)</a>
<a href="#">Dashboard Frame(.svg)</a>	<a href="#">Graph Frame(.svg)</a>

HTTP Response Code: 200

Image Authentication: Basic and Digest

[Save](#)

### Saving Setting Changes

All setting changes performed in this section are committed by clicking the "Save Changes" button. Settings can be restored to their default values by clicking the "Defaults" button.

[Save Changes](#)
[Defaults](#)
[Close](#)

## BACNET

BACnet is a data communication protocol for building automation and control networks. To enable BACnet, toggle BACnet Enabled to open the configuration menu. Forms will appear to allow entry of the Device Name and Instance number you wish to see on the network. These values must be unique and cannot be left blank.



**BACnet**

☒ BACnet Enabled

Device Name: HALO\_Smart\_Sensor

Instance Number: 0

Location (Optional):

**Event Instance Numbers**

**Save**

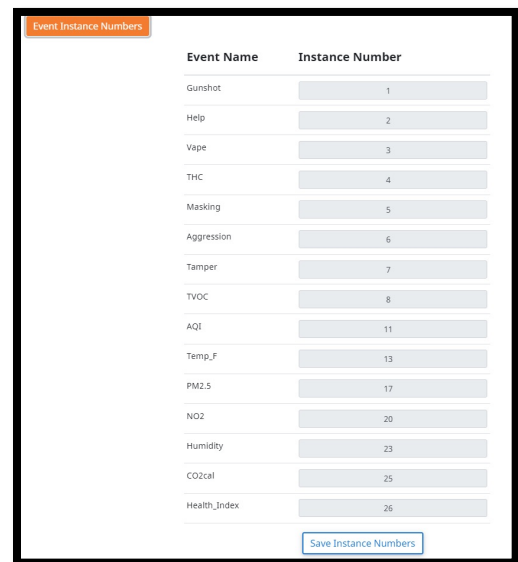
To view HALO's default BACnet "Point Instance Numbers" or add custom "Points" click "Event Instance Numbers."

This list shows how HALO's default events are mapped to BACnet "Points."

A dropdown will appear with your default event "Points" starting at 1 and increasing sequentially. Instance numbers added after the default instances will begin at 128 and increase sequentially from there. After making changes, press the "Save Instance Numbers" button to confirm. Then the "Save" button to confirm the BACnet configuration.

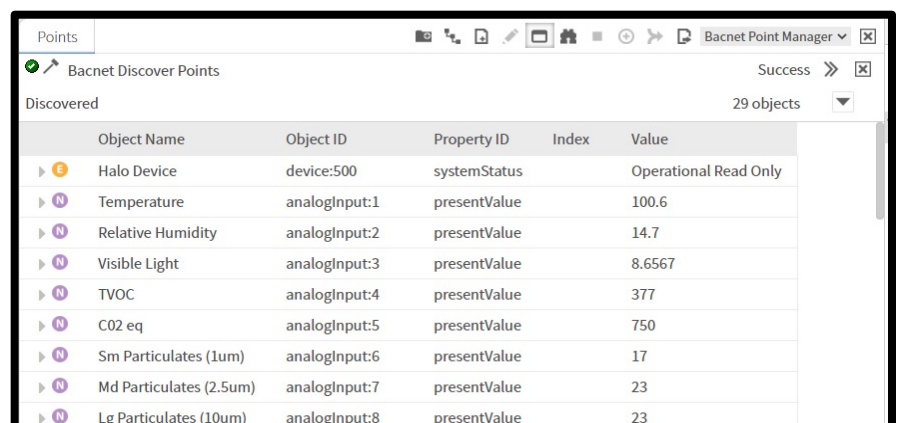
After clicking "Save" on the BACnet tab, you will be able to discover the HALO on your existing BACnet network. Custom events and changes in the BACnet tab will require a rediscovery of the device in the BACnet network.

**Shown to the right is an example of a HALO Discovery on a JACE BACnet Controller**



Event Name	Instance Number
Gunshot	1
Help	2
Vape	3
THC	4
Masking	5
Aggression	6
Tamper	7
TVOC	8
AQI	11
Temp_F	13
PM2.5	17
NO2	20
Humidity	23
CO2cal	25
Health_Index	26

**Save Instance Numbers**



Points

Bacnet Discover Points

Success >> X

Discovered 29 objects

	Object Name	Object ID	Property ID	Index	Value
	Halo Device	device:500	systemStatus		Operational Read Only
	Temperature	analogInput:1	presentValue		100.6
	Relative Humidity	analogInput:2	presentValue		14.7
	Visible Light	analogInput:3	presentValue		8.6567
	TVOC	analogInput:4	presentValue		377
	CO2 eq	analogInput:5	presentValue		750
	Sm Particulates (1um)	analogInput:6	presentValue		17
	Md Particulates (2.5um)	analogInput:7	presentValue		23
	Lg Particulates (10um)	analogInput:8	presentValue		23

## BACNET PROTOCOL IMPLEMENTATION CONFORMANCE (PIC) STATEMENT

### ANNEX A - PROTOCOL IMPLEMENTATION CONFORMANCE STATEMENT (NORMATIVE)

(This annex is part of this Standard and is required for its use.)

#### BACnet Protocol Implementation Conformance Statement

**Date:** September 1, 2022

**Vendor Name:** IPVideo Corp

**Product Name:** HALO Smart Sensor

**Product Model Numbers:** 2.0, 2C and 3C

**Application Software Version:** 0.18.0

**Firmware Revision:** 2.6.2.5

**BACnet Protocol Revision:** 14

#### Product Description:

HALO Smart Sensors are IoT devices that detect environmental changes that occur in privacy concern areas where surveillance cameras can't be installed. A HALO Smart Sensor is capable of detecting vape, smoke, THC and shouting in areas a camera cannot be placed. Additional sensors give HALO the ability to monitor air quality for temperature, humidity, hazardous chemicals and more. When the sensor values exceed normal levels, a HALO Smart Sensor can send alerts to security personnel.

#### BACnet Standardized Device Profile (Annex L):

- ☐ BACnet Operator Workstation (B-OWS)
- ☐ BACnet Advanced Operator Workstation (B-AWS)
- ☐ BACnet Operator Display (B-OD)
- ☐ BACnet Building Controller (B-BC)
- ☐ BACnet Advanced Application Controller (B-AAC)
- ☐ BACnet Application Specific Controller (B-ASC)
- ☒ BACnet Smart Sensor (B-SS)
- ☐ BACnet Smart Actuator (B-SA)

#### List all BACnet Interoperability Building Blocks Supported (Annex K):

DS-RP-B Data Sharing – Read Property B

DS-RPM-B Data Sharing – Read Property Multiple-B

DM-DDB-B Device Management – Dynamic Device Binding B

DM-DOB-B Device Management – Dynamic Object Binding B

DM-DCC-B Device Management – Device Communication Control B



### Segmentation Capability:

- ☐ Able to transmit segmented messages      Window Size: \_\_\_\_\_  
☒ Able to receive segmented messages      Window Size: 1024

### Standard Object Types Supported:

Object Type Supported	Can Be Created Dynamically	Can be Deleted Dynamically
Analog Input	No	No
Binary Value	Yes	Yes
Multi State Value	No	No

### Data Link Layer Options:

- ☒ BACnet IP, (Annex J)  
☐ BACnet IP, (Annex J), Foreign Device  
☐ ISO 8802-3, Ethernet (Clause 7)  
☐ ATA 878.1, 2.5 Mb. ARCNET (Clause 8)  
☐ ATA 878.1, EIA-485 ARCNET (Clause 8), baud rate(s): \_\_\_\_\_  
☐ MS/TP master (Clause 9), baud rate(s): \_\_\_\_\_  
☐ MS/TP slave (Clause 9), baud rate(s): \_\_\_\_\_  
☐ Point-To-Point, EIA 232 (Clause 10), baud rate(s): \_\_\_\_\_  
☐ Point-To-Point, modem, (Clause 10), baud rate(s): \_\_\_\_\_  
☐ LonTalk, (Clause 11), medium: \_\_\_\_\_  
☐ BACnet/ZigBee (ANNEX O)  
☐ Other: \_\_\_\_\_

### Device Address Binding:

Is static device binding supported? (This is currently necessary for two-way communication with MS/TP slaves and certain other devices.)    ☐ Yes    ☒ No

### Networking Options:

- ☐ Router, Clause 6 - List all routing configurations, e.g., ARCNET-Ethernet, Ethernet-MS/TP, etc.  
☐ Annex H, BACnet Tunneling Router over IP  
☐ BACnet/IP Broadcast Management Device (BBMD)  
     Does the BBMD support registrations by Foreign Devices?    ☐ Yes    ☒ No  
     Does the BBMD support network address translation?    ☐ Yes    ☒ No

### Network Security Options:

- ☒ Non-secure Device - can operate without BACnet Network Security  
☐ Secure Device - can use BACnet Network Security (NS-SD BIBB)  
     ☐ Multiple Application-Specific Keys:  
     ☐ Supports encryption (NS-ED BIBB)  
     ☐ Key Server (NS-KS BIBB)

### Character Sets Supported:

Indicating support for multiple character sets does not imply that they can all be supported simultaneously.

- ☒ ISO 10646 (UTF-8)      ☐ IBM™/Microsoft™ DBCS      ☐ ISO 8859-1  
☐ ISO 10646 (UCS-2)      ☐ ISO 10646 (UCS-4)      ☐ JIS X 0208

**If this product is a communication gateway, describe the types of non-BACnet equipment/networks(s) that the gateway supports:** N/A

### BACnet IP Mapping:

Name	Object Type	Instance ID	Units	Raw Sensor Ranges
Temperature (F)	AnalogInput	1	Degrees Fahrenheit	-40 – 185 °F
Temperature (C)	AnalogInput	17	Degrees Celsius	-40 – 85 °C
Relative Humidity	AnalogInput	2	% Relative Humidity	10 – 100% rh (between 0 and 60 °C)
Visible Light	AnalogInput	3	Luxes	0 – 30,000 Lux
TVOC	AnalogInput	4	ppb	0 – 60,000ppb
CO2 eq	AnalogInput	5	ppm	400 – 60000ppm (eq)
Sm Particulates (1um)	AnalogInput	6	µg/m <sup>3</sup>	0 – 500 µg/m <sup>3</sup>
Md Particulates (2.5um)	AnalogInput	7	µg/m <sup>3</sup>	0 – 500 µg/m <sup>3</sup>
Lg Particulates (10um)	AnalogInput	8	µg/m <sup>3</sup>	0 – 500 µg/m <sup>3</sup>
Ammonia	AnalogInput	9	ppm	0.5 – 100 ppm
NO2	AnalogInput	10	ppb	40 – 7,000 ppb
CO	AnalogInput	11	ppm	0.1 – 500 ppm
Noise Level	AnalogInput	12	dB	20 – 130dB SPL
High Gain Mic	AnalogInput	13	dB	20 – 100dB SPL
Low Gain Mic	AnalogInput	14	dB	50 – 130dB SPL
AQI	AnalogInput	15	No Units	
Pressure	AnalogInput	16	Inches of Mercury	9 – 33 inHg
CO2 Cal	AnalogInput	18	ppm	400 – 2000ppm (eq)
Health Index	AnalogInput	19	No Units	
People Count	AnalogInput	20	No Units	
Motion	AnalogInput	22	No Units	

## BACnet IP Mapping: CONTINUED

### Preset Binary Value Points:

Name	Object Type	Instance ID
event_Gunshot	BinaryValue	1
event_Help	BinaryValue	2
event_Vape	BinaryValue	3
event_THC	BinaryValue	4
event_Masking	BinaryValue	5
event_Aggression	BinaryValue	6
event_Tamper	BinaryValue	7
event_TVOC	BinaryValue	8
event_CO2eq	BinaryValue	9
event_AQI	BinaryValue	11
event_Temp_F	BinaryValue	13
event_PM2.5	BinaryValue	17
event_NO2	BinaryValue	20
event_Humidity	BinaryValue	23
event_CO2cal	BinaryValue	25
event_Health_Index	BinaryValue	26
event_Motion	BinaryValue	27
event_People_Count	BinaryValue	28
event_USER_EVENT_1	BinaryValue	1000
event_USER_EVENT_2	BinaryValue	1001

### Additional Binary Value Points Associated with Other Presets:

Name	Object Type	Instance ID
event_CO	BinaryValue	10
event_Help000	BinaryValue	12
event_Temp_C	BinaryValue	14
event_Light	BinaryValue	15
event_PM1	BinaryValue	16
event_PM10	BinaryValue	18
event_NH3	BinaryValue	19
event_Noise	BinaryValue	21
event_Pressure	BinaryValue	22

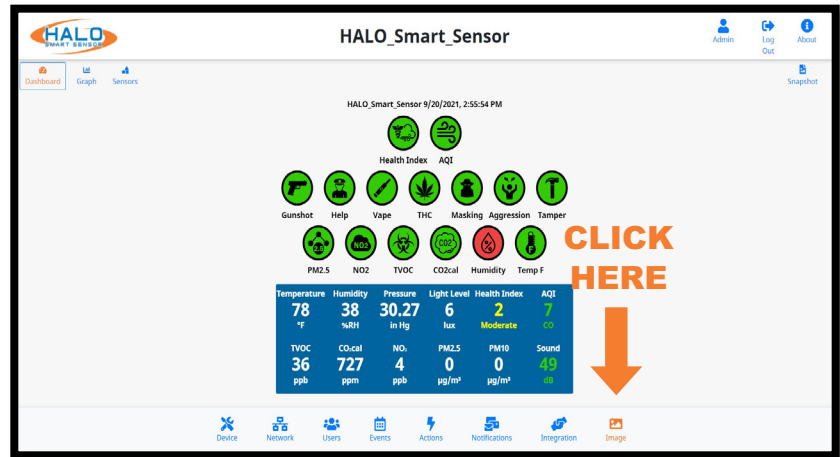
### Preset Multi State Value Points:

Name	Object Type	Instance ID	Description	State Values
AQI Source	MultiStateValue	1	Largest Value Contributing to Air Quality Index	Unavailable, PM2.5, PM10, CO, NO2

## IMAGE SETTINGS

Navigate to the image page, from here the Live View page can be altered. Some of the alterations available include:

- Choose Stream Resolution
- Color Options
- Show / Hide Info
- Signatures
  - Show / Hide
  - Graph Scale
  - Color
  - Order



### Show / Hide Info

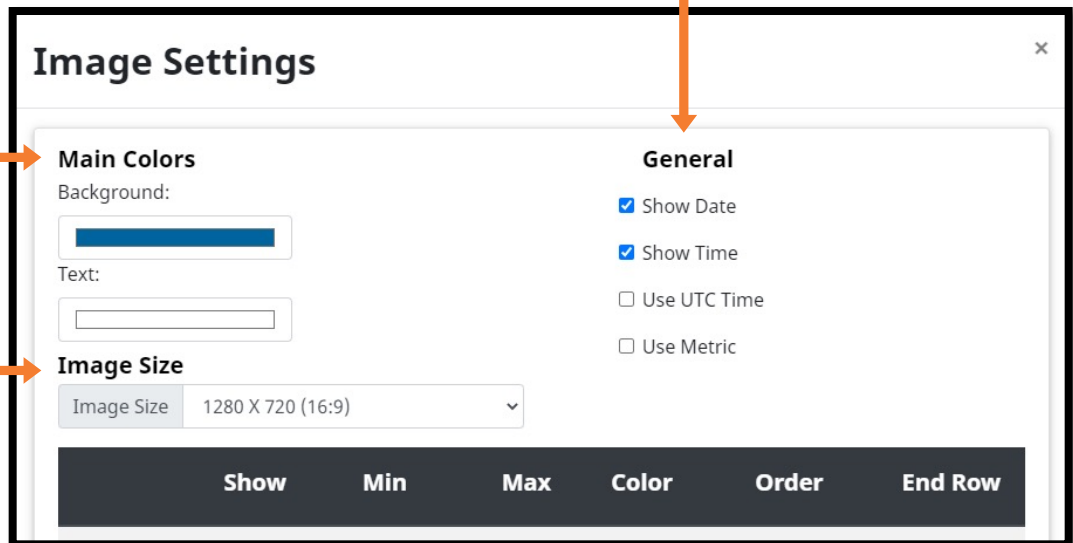
Information can be added or removed from the Live View stream including Date, Time, UTC Time, and a choice of showing temperature in Celsius.

### Color Options

Colors for both background and text can be selected.

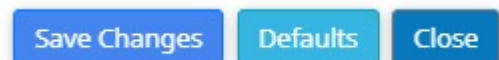
### Image Size

Select from the drop down to change the displayed resolution of the Live View stream.



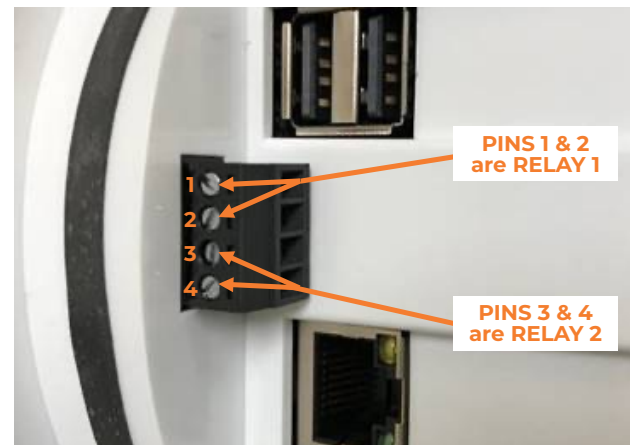
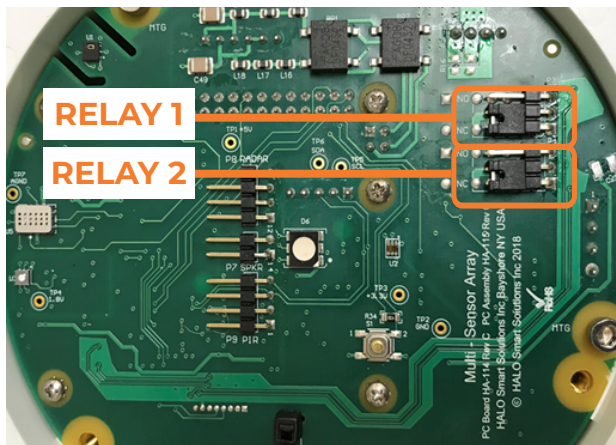
### Saving Setting Changes

All setting changes performed in this section are committed by clicking the "Save Changes" button. Settings can be restored to their default values by clicking the "Defaults" button.



## RELAYS FOR HALO-V2.0 AND HALO-2C

HALO Smart Sensor features two relay controllers that can trigger an external system upon an Event. The relay controls are set to Normally Closed “NC” by default. The ports can be switched to Normally Open “NO” by switching jumper pins. The Jumper Pins are located on the board. The top two covers of the HALO Smart Sensor need to be removed to expose the Relay Jumper Pins. Once exposed, the default state of each relay can be adjusted independently by moving the jumpers from NC to NO.

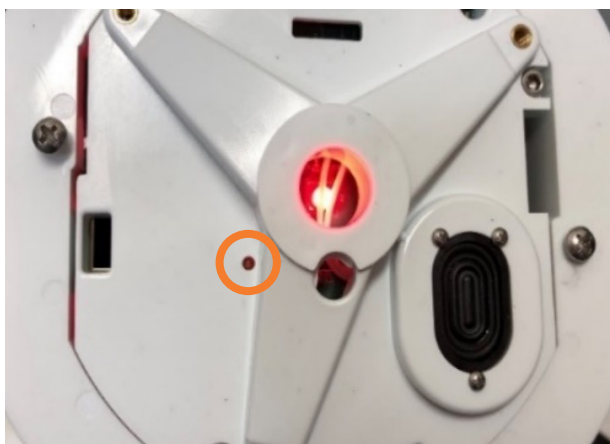


## HALO FACTORY RESET FOR HALO-V2.0 AND HALO-2C

HALO Smart Sensor includes a hard-reset button that can revert the settings to the Factory Defaults. Please note that the outer cover of the HALO Smart Sensor must be removed to expose the reset button.

- After device has been on for more than 30 seconds, use a paperclip or micro screwdriver to engage button.
- Press and hold the button until the LED turns violet to remove all users and reboot.
- Press and hold the button until the LED turns green to remove all users, switch to DHCP and reboot.
- Press and hold the button until the LED turns red to remove all users, switch to DHCP, clear all configuration files and reboot.

### HALO 2.0 Variable Reset Button



### HALO 2C Variable Reset Button





## RELAYS FOR HALO-3C

The HALO-3C contains a single solid state relay which uses Relay (A) & Relay (B) to open and close the circuit loop. By default, the relay is in a closed state meaning the loop is closed. Once an event triggers the relay, it will open the circuit.

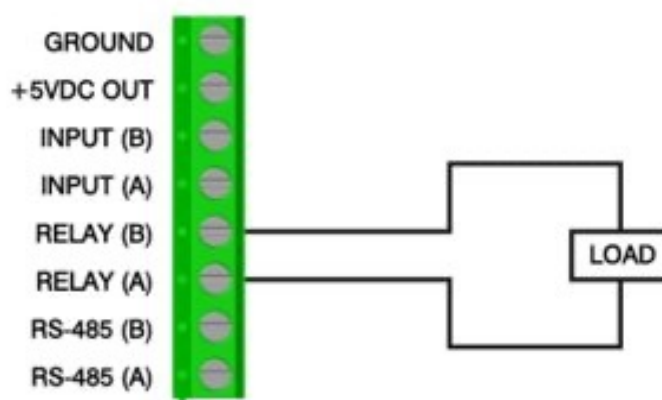
Example: By default, current will be flowing through the load due to the closed state.



Connections:

8. GROUND
7. +5VDC OUT
6. INPUT (B)
5. INPUT (A)
4. RELAY (B)
3. RELAY (A)
2. RS-485 (B)
1. RS-485 (A)

Once the HALO event triggers with the relay set, the relay will open the circuit.

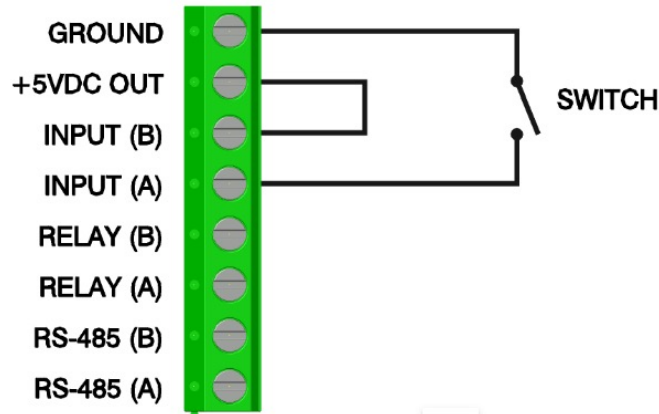


## HALO FACTORY RESET FOR HALO-3C

To factory reset HALO-3C contact support at [support@ipvideocorp.com](mailto:support@ipvideocorp.com) or 1-866-797-1300 Opt2. Have your warranty information prepared to confirm ownership.

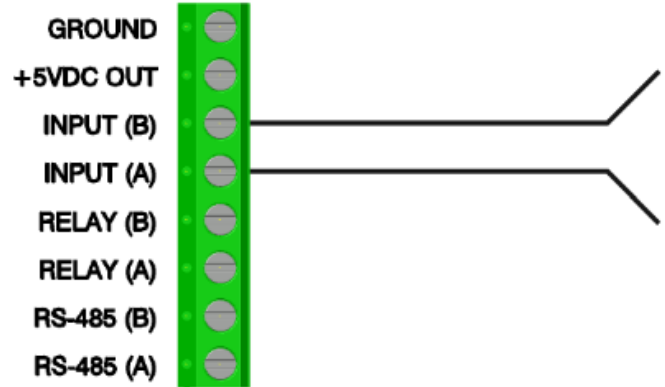
## EXTERNAL INPUT FOR HALO-3C

HALO-3C has the ability to read HIGH/LOW voltage signals from outside devices to trigger events on the device. Voltage potential is limited to 24V between the two connections. Once a voltage is seen across the two connections, the event will trigger on the HALO GUI.



### Example 1

CONNECT PIN 8 GROUND TO PIN 5 (INPUT A) WITH A SWITCH. THE SWITCH WILL ACT AS A METHOD TO TRIGGER THE EVENT. CONNECT PIN 7 (+5VDC OUT) TO PIN 6 (INPUT B)



### Example 2

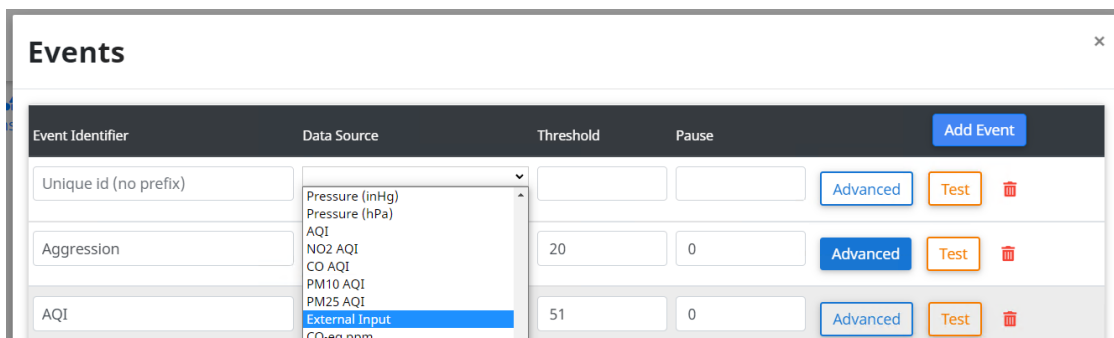
APPLY VOLTAGE TO (INPUT A) WITH COM/ GND TO (INPUT B).

5V - 25V DC non polarized required to trigger an event.

Under the Events Tab select Add Event.

From the dropdown select External Input. Name your Event under Event Identifier.

Set the Threshold to 50 and Pause to 0. Save Changes and Close.



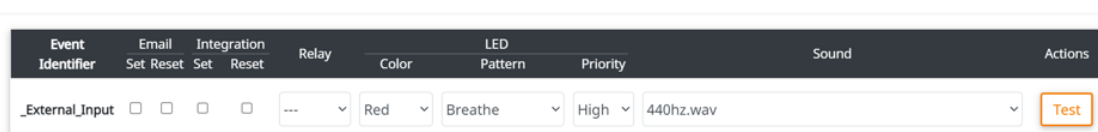
Event Identifier	Data Source	Threshold	Pause	
Unique id (no prefix)	Pressure (inHg)			Advanced Test
Aggression	Pressure (hPa)	20	0	Advanced Test
AQI	AQI	51	0	Advanced Test
	NO2 AQI			
	CO AQI			
	PM10 AQI			
	PM25 AQI			
	External Input			
	CO2eq ppm			

Under the Actions Tab locate the new added event.

From here you can set an Action the HALO can take upon trigger of the event.

Save any changes and test your external input.

### Actions



Event Identifier	Email	Integration	Relay	Color	LED Pattern	Priority	Sound	Actions
_External_Input	<input type="checkbox"/>	<input type="checkbox"/>	<input type="checkbox"/>	---	Red	Breathe	High	440hz.wav



## MAINTENANCE

HALO is an environmental sensor and as such, proper maintenance will keep your HALO operating at peak levels. This guide will give you recommended best practices for your HALO maintenance.

Notify appropriate staff of alarms that will be activated during cleaning or disable alerts via the HALO GUI interface or HALO Device Manager. **NOTE: Levels of some of the sensors may read high levels for apx 3 – 5 minutes.**

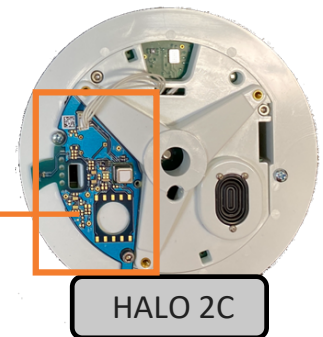
### HALO-V2.0 / 2C

- Remove only the first front cover using T10 torx wrench. Do not remove the next cover.
  - Wipe the cover that was removed on both sides with a 75% Saturated Alcohol Wipe.
  - HALO-V2.00: Wipe the inside surface with a 75% Saturation Alcohol Wipe.
  - HALO-2C. Wipe HALO with a 75 % Saturation Alcohol Wipe **avoiding the blue exposed sensor board.**
- Screw back in the front cover.

**DO NOT WIPE**



HALO 2



HALO 2C

### HALO-3C

- It is recommended to use an ESD Safe vacuum to pull dust from within.
- Wipe the outside with a slightly damp cloth.
- DO NOT open HALO-3C for maintenance.
- DO NOT use detergents or alcohol.



HALO-3C

HALO is an environmental sensor and as such, proper maintenance will keep your HALO operating at peak levels. This guide will give you recommended best practices for your HALO maintenance.

### Interval of Cleanings

- Frequency for cleaning is based on the environment and amount of sediment collecting on the HALO housing.
- It is recommended to clean the HALO at least every 90 days.

### Maintaining Your Thresholds

- Environments change over time. Periodic review of your environmental conditions will ensure that your thresholds are set appropriately, and you can receive notifications of events.
  - Review active events signatures in your HALO.
  - Use the CLOUD Analytics or HALO log to establish average levels of the events and signatures you are using.
  - Adjust the thresholds of your active signatures and events to appropriate levels.

## TESTING

**Note:** The following LED responses are defined in the “Presets” of firmware 2.3 or newer.

### Vape Detection Test:

- **Testing Product:** Cirrus Wind Indicator
- **Process:** Activate cartridge and pump for 10 seconds from directly below HALO Smart Sensor at 5' height.
- **Results:** Vape Alarm, Green LED Indicator

### Keyword Test:

- **Process:** Clearly speak the active keyword from directly below HALO at slightly elevated speaking volume. Word options include (Note, typically only 1 of the following may be active):
  - Emergency Help
  - Help Nine One One
  - Help One One One
  - Help Triple Nine
  - Help Triple Zero
- **Results:** Help Alarm, Violet LED Indicator

### Tamper Detection Test:

- **Process:** Knock on the HALO Smart Sensor 3-5 times.
- **Results:** Red LED Indicator

### Particulate, CO<sub>2</sub>, & TVOC Test:

- **Testing Product:** CRC Smoke Test, canned
- **Process:** Sprayed directly at HALO from 2' away for 2-3 seconds as directed.
- **Results:** PM<sub>2.5</sub> Rise 200+  $\mu\text{g}/\text{m}^3$ , PM<sub>10</sub> Rise 500+  $\mu\text{g}/\text{m}^3$ , CO<sub>2</sub>eq (or CO<sub>2</sub>cal) Rise 8,000+ppm, TVOC Rise 4,000+ppb. (Observed in “Sensors” view, confirmed in event logs)
- **Alerts:** Masking event (Detected using revised HALO v2.3 Masking Advanced conditions), Yellow LED Indicator

### Temperature Test:

- **Testing Product:** FLUKE-62 MAX Infrared Thermometer
- **Process:** Aim thermometer directly at HALO. Compare to HALO displayed values.
- **Calibration:** Under the “Device” tab under “Heat Sensor” input temperature offset to calibrate. The values are in Celsius and (+) and (-) values are accepted.

## IPVIDEO CORPORATION END USER LICENSE AGREEMENT

This End User License Agreement (this “Agreement”), is a binding agreement between IPVideo Corporation (“Licensor”) and you (an individual or entity) licensing (the “Licensee”) the software and/or firmware (“Software”) which accompanies this Agreement and is contained in one or more of Licensor’s product(s) (the “Products”). Licensor Software and Products subject to this Agreement include, but are not limited to, HALO Cloud, HALO Smart Sensor, ViewScan, and AVfusion.

THIS AGREEMENT REQUIRES THE USE OF ARBITRATION (ON AN INDIVIDUAL BASIS ONLY; I.E., CASE CONSOLIDATIONS AND CLASS ACTIONS ARE NOT PERMITTED) IN ORDER TO RESOLVE DISPUTES. LICENSOR PROVIDES THE SOFTWARE SOLELY ON THE TERMS AND CONDITIONS IN THIS AGREEMENT AND ON THE CONDITION THAT LICENSEE ACCEPTS AND COMPLIES WITH THEM. BY USING THE SOFTWARE, YOU (A) ACCEPT THIS AGREEMENT AND AGREE TO BE LEGALLY BOUND BY ITS TERMS; AND (B) REPRESENT AND WARRANT THAT: (I) YOU ARE OF LEGAL AGE TO ENTER INTO A BINDING AGREEMENT; AND (II) IF LICENSEE IS A CORPORATION, GOVERNMENTAL ORGANIZATION, OR OTHER LEGAL ENTITY, YOU HAVE THE RIGHT, POWER, AND AUTHORITY TO ENTER INTO THIS AGREEMENT ON BEHALF OF LICENSEE AND BIND LICENSEE TO ITS TERMS AND CONDITIONS. IF LICENSEE DOES NOT AGREE TO THE TERMS AND CONDITIONS OF THIS AGREEMENT, LICENSOR WILL NOT AND DOES NOT LICENSE THE SOFTWARE TO LICENSEE AND YOU MUST NOT USE THE SOFTWARE.

**1. License Grant and Scope.** Subject to and conditioned upon Licensee’s strict compliance with all terms and conditions in this Agreement, Licensor hereby grants to Licensee a non-exclusive, non-transferable, non-sublicensable, limited license during the Term (hereinafter defined) to use, solely on the Product(s) subject to this Agreement and solely by and through those individuals authorized to use the Software pursuant to the license granted under this Agreement (“Authorized Users”), the Software and all user manuals, technical manuals, and any other materials provided by Licensor, in printed, electronic, or other form, that describe the installation, operation, use, or technical specifications of the Software (the “Documentation”), solely as set forth in this Agreement and the Documentation and subject to payment of any applicable license fees (the “License”). For Software that requires installation on a Licensee computer (as expressly stated in the Documentation), including but not limited to ViewScan and AVfusion, the License grants Licensee the additional right, exercisable solely by and through Licensee’s Authorized Users and solely in support of its use of the Software in accordance with the License, to: (a) install in accordance with the Documentation one (1) copy of the Software on one (1) computer owned or leased, and controlled by, Licensee, and (b) use and run the Software as properly installed in accordance with this Agreement and the Documentation. All permitted Documentation copies made by Licensee: (i) will be Licensor’s exclusive property; (ii) will be subject to the terms and conditions of this Agreement; and (iii) must include all trademark, copyright, patent, and other Intellectual Property Rights (hereinafter defined) notices contained in the original.

**2. Third-Party Materials.** The Software includes software, content, or other materials, that are

## IPVIDEO CORPORATION END USER LICENSE AGREEMENT

owned by individuals, corporations, limited liability companies, governmental authorities or other entities (each, a “Person”) other than Licensor and are provided to Licensee on licensee terms that are in addition to and/or different from those contained in this Agreement, including but not limited to “open source” or “free software” licenses (“Third-Party Licenses”). A list of all materials included in the Software and provided under Third-Party Licenses can be found for the Product(s) at [www.ipvideocorp.com/third-party-software-usage-agreement](http://www.ipvideocorp.com/third-party-software-usage-agreement), and the applicable Third-Party Licenses are accessible via links therefrom. Licensee is bound by and shall comply with all Third-Party Licenses. Any breach by Licensee or any of its Authorized Users of any Third-Party License is also a breach of this Agreement.

**3. Use Restrictions.** Licensee shall not, and shall require its Authorized Users not to, directly or indirectly: (a) use (including make any copies of) the Software or Documentation beyond the scope of the License; (b) provide any other Person, including any subcontractor, independent contractor, affiliate, or service provider of Licensee, with access to or use of the Software or Documentation; (c) modify, translate, adapt, or otherwise create derivative works or improvements, whether or not patentable, of the Software or Documentation or any part thereof; (d) combine the Software or any part thereof with, or incorporate the Software or any part thereof in, any other programs; (e) reverse engineer, disassemble, decompile, decode, or otherwise attempt to derive or gain access to the source code of the Software or any part thereof; (f) remove, delete, alter, or obscure any trademarks or any copyright, trademark, patent, or other intellectual property or proprietary rights notices provided on or with the Software or Documentation, including any copy thereof; (g) except as expressly set forth in this Agreement, copy the Software or Documentation, in whole or in part; (h) rent, lease, lend, sell, sub-license, assign, distribute, publish, transfer, or otherwise make available the Software, or any features or functionality of the Software, to any Third Party for any reason, whether or not over a network or on a hosted basis, including in connection with the internet or any web hosting, software as a service, cloud, or other technology or service; (i) use the Software or Documentation in violation of any law, regulation, or rule; or (j) use the Software or Documentation for purposes of competitive analysis of the Software, the development of a competing software product or service, or any other purpose that is to the Licensor’s commercial disadvantage.

**4. Responsibility for Use of Software.** Licensee is responsible and liable for all uses of the Software and Documentation through access thereto provided by Licensee, directly or indirectly. Specifically, and without limiting the generality of the foregoing, Licensee is responsible and liable for all actions and failures to take required actions with respect to the Software and Documentation by its Authorized Users or by any other Person to whom Licensee or an Authorized User may provide access to or use of the Software and/or Documentation, whether such access or use is permitted by or in violation of this Agreement.

**5. Collection and Use of Information.** Licensee acknowledges that Licensor may directly or indirectly (including but not limited to through the services of third parties), collect and store

## IPVIDEO CORPORATION END USER LICENSE AGREEMENT

information regarding use of the Software and Products and about equipment on which the Software is installed or through which it otherwise is accessed and used, and information about Licensee's sensors, through: (i) the provision of maintenance and support services or Software updates; (ii) security measures included in the Software; or (iii) any other services provided by Licensor to Licensee related to the Software or Products (collectively, "Licensee Data"). Licensee agrees that the Licensor may use Licensee Data for any purpose related to any use of the Software or Products by Licensee or on Licensee's equipment, including but not limited to: (a) improving the performance of the Software or Products or developing Software updates, product support and other services; (b) verifying Licensee's compliance with the terms of this Agreement and enforcing the Licensor's rights, including all Intellectual Property Rights in and to the Software and Products; and (c) customizing Licensor's websites and/or products to customer preferences or interests. Additionally, Licensee agrees that Licensor may use Licensee Data in an anonymized or aggregated format to improve Licensor's business, websites, products and/or services, including but not limited to developing new products and services. Licensor's use of Licensee Data in such anonymized or aggregated format shall comply with all applicable U.S. laws. Additionally, the Software may cause Licensee's computer, with or without notice to Licensee, to connect to the Internet and connect with Licensor's website or other online accounts. Such a connection may occur for several potential reasons, including but not limited to providing data, information or functionality to the Software or receiving information from Licensee. Whenever the Software connects to the Internet and connects with Licensor's website or other online accounts, Licensor may collect, store and use information regarding Licensee and its computer, and in such a case Licensor's Privacy Policy located at <https://www.ipvideocorp.com/privacy-policy/> shall apply in addition to this Agreement.

**6. Intellectual Property Rights.** Licensee acknowledges and agrees that the Software and Documentation are provided under license, and not sold, to Licensee. Licensee does not acquire any ownership interest in the Software or Documentation under this Agreement, or any other rights thereto, other than to use the same in accordance with the License granted hereunder and subject to all terms and conditions in this Agreement. Licensor and its licensor's and service providers reserve and shall retain their entire right, title, and interest in and to the Software and Documentation and any and all registered and unregistered rights granted, applied for, or otherwise now or hereafter in existence under or related to any patent, copyright, trademark, trade secret, database protection, or other intellectual property rights laws, and all similar or equivalent rights or forms of protection, in any part of the world (collectively, "Intellectual Property Rights") arising out of or relating to the Software or Documentation. Licensee shall safeguard all Software and Documentation (including all copies thereof) from infringement, misappropriation, theft, misuse, or unauthorized access. Licensee shall promptly notify Licensor if Licensee becomes aware of any infringement of the Licensor's Intellectual Property Rights in the Software or Documentation and fully cooperate with Licensor, at Licensor's sole expense, in any legal action taken by Licensor to enforce its Intellectual Property Rights.

## IPVIDEO CORPORATION END USER LICENSE AGREEMENT

**7. Products and Software Limitations.** Licensee acknowledges that the Products and Software: (a) are not certified for any emergency response, and (b) are not a third-party monitored emergency notification system. Licensee further acknowledges that Licensor does not monitor emergency notifications and will not dispatch emergency authorities to any location if an emergency occurs. Licensee further acknowledges that Licensor's Products and Software are not a lifesaving solution for people at risk and are no substitute for emergency services. All life threatening and emergency events should be directed to the appropriate response services.

**8. Assumption of Risk.** IN USING THE SOFTWARE OR PRODUCTS, INCLUDING BUT NOT LIMITED TO WHEN RESPONDING TO THIRD-PARTY GENERATED EVENTS, THERE EXISTS THE POSSIBILITY OF RISK OR SERIOUS INJURY. LICENSEE ACKNOWLEDGES AND ACCEPTS: (I) THE INHERENT RISKS IN USING THE SOFTWARE OR PRODUCTS; (II) THAT SUCH RISKS MAY BE SIGNIFICANT, INCLUDING BUT NOT LIMITED TO BODILY INJURY, PERMANENT DISABILITY, PARALYSIS, AND DEATH; AND (III) THAT SUCH RISKS MAY BE CAUSED BY, ARISE OUT OF, OR BE IN CONNECTION WITH LICENSEE'S ACTIONS OR INACTIONS, THE ACTIONS OR INACTIONS OF OTHERS, THE CONDITION OR OPERATION (OR FAILURE TO OPERATE) OF THE SOFTWARE OR PRODUCTS, OR THE NEGLIGENCE OF ANY PARTY. LICENSEE KNOWINGLY AND FREELY ASSUMES ALL SUCH RISKS (KNOWN AND UNKNOWN, FORESEEABLE AND UNFORESEEABLE) AND TAKES FULL RESPONSIBILITY FOR ITS USE OF THE SOFTWARE AND PRODUCTS, INCLUDING BUT NOT LIMITED TO ANY LOSS, DAMAGE, OR INJURY SUSTAINED OR CAUSED BY USING THE SOFTWARE AND PRODUCTS. LICENSEE ACKNOWLEDGES AND ACCEPTS THE INHERENT RISKS OF RECEIVING ALERTS OF CRIMINAL ACTIVITY OR EMERGENCIES REPORTED BY THIRD PARTIES ("EVENTS"), RESPONDING OR NOT RESPONDING TO EVENTS, AND THE INHERENT RISKS IN RELYING ON OR OTHERWISE BELIEVING EVENTS, INCLUDING BUT NOT LIMITED TO THE POSSIBILITY THAT: (A) AN EVENT IS FALSE, INACCURATE, OR PRODUCED BY MISTAKE, ERROR OR BAD FAITH; AND (B) LICENSEE WILL BE HELD LIABLE FOR ACTIONS OR INACTIONS IN RESPONDING TO AN EVENT, INCLUDING BUT NOT LIMITED TO NEGLIGENTLY CONTRIBUTING TO LICENSEE'S INJURY OR OTHERS' INJURY.

**9. Export Regulation.** The Software and Documentation may be subject to U.S. export control laws, including the Export Control Reform Act and its associated regulations. Licensee shall not, directly or indirectly, export, re-export, or release the Software or Documentation to, or make the Software or Documentation accessible from, any jurisdiction or country to which export, re-export, or release is prohibited by law, rule, or regulation. Licensee shall comply with all applicable federal laws, regulations, and rules, and complete all required undertakings (including obtaining any necessary export license or other governmental approval), prior to exporting, re-exporting, releasing, or otherwise making the Software or Documentation available outside the U.S.

**10. U.S. Government Rights.** The Software is commercial computer software, as such term is defined in 48 C.F.R. §2.101. Accordingly, if Licensee is the U.S. Government or any contractor therefor, Licensee shall receive only those rights with respect to the Software and Documentation



## IPVIDEO CORPORATION END USER LICENSE AGREEMENT

as are granted to all other end users under license, in accordance with (a) 48 C.F.R. §227.7201 through 48 C.F.R. §227.7204, with respect to the Department of Defense and their contractors, or (b) 48 C.F.R. §12.212, with respect to all other U.S. Government licensees and their contractors.

**11. Term and Termination.** This Agreement and the License granted hereunder shall remain in effect for the term set forth on any applicable order form for a Product containing the Software or until earlier terminated as set forth herein (the “Term”). Licensee may terminate this Agreement by ceasing to use and destroying all copies of the Software and Documentation. Licensors may terminate this Agreement, effective upon written notice to Licensee, if Licensee, breaches this Agreement and such breach: (i) is incapable of cure; or (ii) being capable of cure, remains uncured ten (10) days after Licensors provides written notice thereof. Licensors may terminate this Agreement, effective immediately, if Licensee files, or has filed against it, a petition for voluntary or involuntary bankruptcy or pursuant to any other insolvency law, makes or seeks to make a general assignment for the benefit of its creditors or applies for, or consents to, the appointment of a trustee, receiver, or custodian for a substantial part of its property. Upon expiration or earlier termination of this Agreement, the License granted hereunder shall also terminate, and Licensee shall cease using and destroy all copies of the Software and Documentation. No expiration or termination shall affect Licensee’s obligation to pay all Licensee fees that may have become due before such expiration or termination, or entitle Licensee to any refund.

## **12. Limited Warranty.**

**(a)** Licensors warrants that, for thirty (30) days following Licensee’s licensing of the Software or the purchase date set forth in any applicable order form for a Product containing the Software, whichever is earlier, (i) any media on which the Software is provided will be free of material damage and defects in materials and workmanship under normal use; and (ii) the Software will substantially contain the functionality described in the Documentation, and when properly installed on a computer meeting the specifications set forth in, and operated in accordance with, the Documentation, will substantially perform in accordance therewith. The foregoing warranties shall not apply and will become null and void if Licensee breaches any material provision of this Agreement, or if Licensee, any Authorized User, or any other Person provided access to the Software by Licensee or any Authorized User, whether or not in violation of this Agreement: (a) installs or uses the Software on or in connection with any hardware or software not specified in the Documentation; (b) modifies or damages the Software, or the media on which it is provided, including abnormal physical or electrical stress; or (c) misuses the Software, including any use of the Software other than as specified in the Documentation.

**(b)** If, during the warranty period specified in Section 12(a), any Software covered by the warranty fails to perform substantially in accordance with the Documentation, and such failure is not excluded from warranty pursuant to Section 12(a), Licensors will, subject to Licensee’s promptly notifying Licensors in writing of such failure, at its sole option, either: (i) repair or replace the Software, provided that Licensee provides Licensors with all information Licensors requests to



## IPVIDEO CORPORATION END USER LICENSE AGREEMENT

resolve the reported failure, including sufficient information to enable the Licensors to recreate such failure; or (ii) refund the License fees paid for such Software, subject to Licensee's ceasing all use of and, if requested by Licensors, returning to Licensors all copies of the Software. If Licensors repairs or replaces the Software, the warranty will continue to run from the initial date identified in Section 12(a), and not from Licensee's receipt of the repair or replacement. The remedies in this Section 12 are Licensee's sole remedies and Licensors's sole liability under this Agreement.

**(c)** EXCEPT FOR THE LIMITED WARRANTY IN SECTION 12, THE SOFTWARE, DOCUMENTATION AND PRODUCTS ARE PROVIDED TO LICENSEE "AS IS" AND WITH ALL FAULTS AND DEFECTS WITHOUT WARRANTY OF ANY KIND. TO THE MAXIMUM EXTENT PERMITTED UNDER APPLICABLE LAW, LICENSOR, ON ITS OWN BEHALF AND ON BEHALF OF ITS AFFILIATES AND ITS AND THEIR RESPECTIVE LICENSOR'S, SERVICE PROVIDERS AND AGENTS, EXPRESSLY DISCLAIMS ALL WARRANTIES, WHETHER EXPRESS, IMPLIED, STATUTORY, OR OTHERWISE, WITH RESPECT TO THE SOFTWARE, DOCUMENTATION AND PRODUCTS, INCLUDING ALL IMPLIED WARRANTIES OF MERCHANTABILITY, FITNESS FOR A PARTICULAR PURPOSE, TITLE, AND NON-INFRINGEMENT, AND WARRANTIES THAT MAY ARISE OUT OF COURSE OF DEALING, COURSE OF PERFORMANCE, USAGE, OR TRADE PRACTICE. WITHOUT LIMITATION TO THE FOREGOING, THE LICENSOR PROVIDES NO WARRANTY OR UNDERTAKING, AND MAKES NO REPRESENTATION OF ANY KIND THAT THE SOFTWARE, DOCUMENTATION OR PRODUCTS WILL MEET LICENSEE'S REQUIREMENTS, ACHIEVE ANY INTENDED RESULTS, BE COMPATIBLE OR WORK WITH ANY OTHER SOFTWARE, SYSTEMS, PRODUCTS OR SERVICES, OPERATE WITHOUT INTERRUPTION, MEET ANY PERFORMANCE OR RELIABILITY STANDARDS OR BE ERROR FREE, OR THAT ANY ERRORS OR DEFECTS CAN OR WILL BE CORRECTED.

**13.** Limitation of Liability. TO THE FULLEST EXTENT PERMITTED UNDER APPLICABLE LAW:

**(a)** IN NO EVENT WILL LICENSOR OR ITS AFFILIATES, OR ANY OF ITS OR THEIR RESPECTIVE LICENSOR'S, SERVICE PROVIDERS AND AGENTS, BE LIABLE TO LICENSEE OR ANY THIRD PARTY FOR ANY USE, INTERRUPTION, DELAY, OR INABILITY TO USE THE SOFTWARE, DOCUMENTATION OR PRODUCTS; LOST REVENUES OR PROFITS; DELAYS, INTERRUPTION, OR LOSS OF SERVICES, BUSINESS, OR GOODWILL; LOSS OR CORRUPTION OF DATA; LOSS FROM SYSTEM FAILURE, MALFUNCTION, OR SHUTDOWN; FAILURE TO ACCURATELY TRANSFER, READ, OR TRANSMIT INFORMATION; FAILURE TO UPDATE OR PROVIDE CORRECT INFORMATION; SYSTEM INCOMPATIBILITY; OR SECURITY BREACHES; OR FOR ANY CONSEQUENTIAL, INCIDENTAL, INDIRECT, EXEMPLARY, SPECIAL, OR PUNITIVE DAMAGES, WHETHER ARISING OUT OF OR IN CONNECTION WITH THIS AGREEMENT, BREACH OF CONTRACT, TORT (INCLUDING NEGLIGENCE), OR OTHERWISE, REGARDLESS OF WHETHER SUCH DAMAGES WERE FORESEEABLE AND WHETHER OR NOT THE LICENSOR WAS ADVISED OF THE POSSIBILITY OF SUCH DAMAGES.

**(b)** IN NO EVENT WILL LICENSOR'S AND ITS AFFILIATES', INCLUDING ANY OF ITS OR THEIR RESPECTIVE LICENSOR'S, SERVICE PROVIDERS' AND AGENTS', COLLECTIVE AGGREGATE LIABILITY UNDER OR IN CONNECTION WITH THIS AGREEMENT OR ITS SUBJECT MATTER, UNDER

## IPVIDEO CORPORATION END USER LICENSE AGREEMENT

ANY LEGAL OR EQUITABLE THEORY, INCLUDING BREACH OF CONTRACT, TORT (INCLUDING NEGLIGENCE), STRICT LIABILITY, AND OTHERWISE, EXCEED THE TOTAL AMOUNT PAID TO THE LICENSOR UNDER THIS AGREEMENT FOR THE SOFTWARE, DOCUMENTATION OR PRODUCTS SUBJECT TO THE CLAIM.

**(c)** THE LIMITATIONS IN SECTION 13(a) AND SECTION 13(b) SHALL APPLY EVEN IF LICENSEE'S REMEDIES IN THIS AGREEMENT FAIL OF THEIR ESSENTIAL PURPOSE.

**14.** Indemnification. Licensee agrees to indemnify, defend and hold harmless Licensor and its affiliates and its and their respective officers, directors, employees, agents, affiliates, licensor's, service providers, successors and assigns from and against any and all damages, liabilities, losses, deficiencies, claims, actions, judgments, settlements, interest, awards, penalties, fines, costs, or expenses of whatever kind (including but not limited to reasonable attorney's fees), arising from or relating to: (i) Licensee's use or misuse of the Software (including but not limited to any content submitted by Licensee's through the Software), Documentation or Products, or (ii) Licensee's breach of any representation, warranty or obligation under this Agreement.

**15.** Miscellaneous.

**(a)** All matters arising out of or relating to this Agreement shall be governed by and construed in accordance with the internal laws of the State of New York without giving effect to any choice or conflict of law provision or rule. Subject to all applicable laws, Licensee is agreeing to give up: (i) its right to litigate any claims that may arise hereunder in court or before a jury; and (ii) its right to consolidate any claim and/or participate in any class action claim that may arise hereunder in any manner or forum. Instead, any claim, dispute, or controversy of any kind or nature arising hereunder which cannot be amicably resolved by Licensor and Licensee shall be solely and finally settled by arbitration administered by the American Arbitration Association in accordance with its commercial arbitration rules. Judgment on the award rendered by the arbitrator(s) may be entered in any court having jurisdiction thereof. The arbitration shall take place before a panel of one arbitrator sitting in New York County, New York. The language of the arbitration shall be English. The arbitrator will be bound to adjudicate all disputes in accordance with the laws of the State of New York. The decision of the arbitrator(s) shall be in writing with written findings of fact and shall be final and binding on the parties. Each party shall bear all of its own costs, including but not limited to attorneys' fees, actually incurred in connection with any such arbitration proceedings; provided, however, that if Licensor is the prevailing party, then it shall be entitled to reimbursement for its reasonable attorneys' fees and related costs expended in connection with the arbitration. With respect to any arbitration hereunder, as stated above, Licensee hereby expressly waives any right to consolidate any claim and/or participate in any class-action claim of any kind or nature.

**(b)** Licensor will not be responsible or liable to Licensee, or deemed in default or breach hereunder by reason of any failure or delay in the performance of its obligations hereunder where such failure

## IPVIDEO CORPORATION END USER LICENSE AGREEMENT

or delay is due to strikes, labor disputes, civil disturbances, riot, rebellion, invasion, epidemic, pandemic, hostilities, war, terrorist attack, embargo, natural disaster, acts of God, flood, fire, sabotage, fluctuations or non-availability of electrical power, or Licensee equipment, loss and destruction of property, or any other circumstances or causes beyond Licensor's reasonable control.

**(c)** All notices, requests, demands, and other communications hereunder shall be in writing and shall be deemed to have been given: (i) when delivered by hand; (ii) when received by the addressee if sent by a nationally recognized overnight courier (receipt requested); (iii) on the date sent by facsimile or email (with confirmation of transmission) if sent during normal business hours of the recipient, and on the next business day if sent after normal business hours of the recipient; or (iv) on the third day after the date mailed, by certified or registered mail, return receipt requested, postage prepaid. Such communications shall be sent to the respective parties at the addresses set forth on any applicable order form for a Product containing the Software or, in the case of Licensee, may also be sent to any contact information provided to Licensor in registering the Software or any Product(s) containing the Software.

**(d)** This Agreement, together with any documents or policies that are incorporated by reference herein, constitutes the sole and entire agreement between Licensee and Licensor with respect to the subject matter contained herein, and supersedes all prior and contemporaneous understandings, agreements, representations, and warranties, both written and oral, with respect to such subject matter.

**(e)** Licensee shall not assign or otherwise transfer any of its rights, or delegate or otherwise transfer any of its obligations or performance, under this Agreement, in each case whether voluntarily, involuntarily, by operation of law, or otherwise, without Licensor's prior written consent, which Licensor may give or withhold in its sole discretion. No delegation or other transfer will relieve Licensee of any of its obligations or performance under this Agreement. Any purported assignment, delegation, or transfer in violation of this Section 15(e) is void. Licensor may freely assign or otherwise transfer all or any of its rights, or delegate or otherwise transfer all or any of its obligations or performance, under this Agreement without Licensee's consent. This Agreement is binding upon and inures to the benefit of the parties hereto and their respective permitted successors and assigns.

**(f)** This Agreement is for the sole benefit of the parties hereto and their respective successors and permitted assigns and nothing herein, express or implied, is intended to or shall confer on any other Person any legal or equitable right, benefit, or remedy of any nature whatsoever under or by reason of this Agreement.

**(g)** This Agreement may only be amended, modified, or supplemented by a written agreement signed by each party hereto. No waiver by any party of any of provision herein shall be effective

## IPVIDEO CORPORATION END USER LICENSE AGREEMENT

unless set forth in writing and signed by the waiving party. Except as set forth in this Agreement, no failure to exercise, or delay in exercising, any right, remedy, power, or privilege arising from this Agreement shall operate or be construed as a waiver thereof; nor shall any single or partial exercise of any right, remedy, power, or privilege hereunder preclude any other or further exercise thereof or the exercise of any other right, remedy, power, or privilege.

**(h)** If any term or provision of this Agreement is invalid, illegal, or unenforceable in any jurisdiction, such invalidity, illegality, or unenforceability shall not affect any other term or provision of this Agreement or invalidate or render unenforceable such term or provision in any other jurisdiction. On such determination that any term or other provision is invalid, illegal, or unenforceable, the parties hereto shall negotiate in good faith to modify this Agreement so as to effect the original intent of the Parties as closely as possible in a mutually acceptable manner in order that the transactions contemplated hereby be consummated as originally contemplated to the greatest extent possible.

Questions or Additional Information. If you have questions regarding this EULA, please contact Licensors at <https://www.ipvideocorp.com/contact-us/>.



## SUPPORT

IPVideo Corporation is dedicated to assisting its customers with their HALO purchases. If you have questions or concerns about a HALO software/hardware issue, please let us know!

Our support team may be reached via email or phone. The email address is **techsupport@ipvideocorp.com**.

When emailed, a reply will be sent along with a case number. We will reply within one business day to requests.

Our support phone number is **631-647-9970**. Live technical support is available Monday through Friday (excluding holidays) between the hours of 8 AM and 5 PM Eastern.

