

Ngaro® Analytics: Milestone Setup

User Manual - Versión v2.8

Introduction

The integration of Milestone* platform and Ngaro Analytics combines two high quality products and offers users an ideal system for automatic and supervised video surveillance.

Ngaro Analytics transforms thermal cameras into extremely powerful smart sensors, which can be used for perimeter protection, detection of human presence or suspicious behavior, coastal surveillance and more. The integration allows the system to receive analytic events in XProtect taking profit from the total management capabilities of Milestone platform plus the advanced detection provided by Ngaro Analytics algorithms.

*Milestone and XProtect and all associated logos and designs are trademarks or registered trademarks of Milestone Systems.

Ngaro® Analytics Manager

Interface

Main Window

The application starts asking for the configuration password. Default value is "1234"

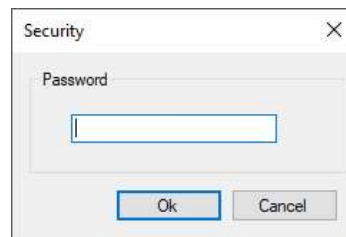


Figure 1: Logging window

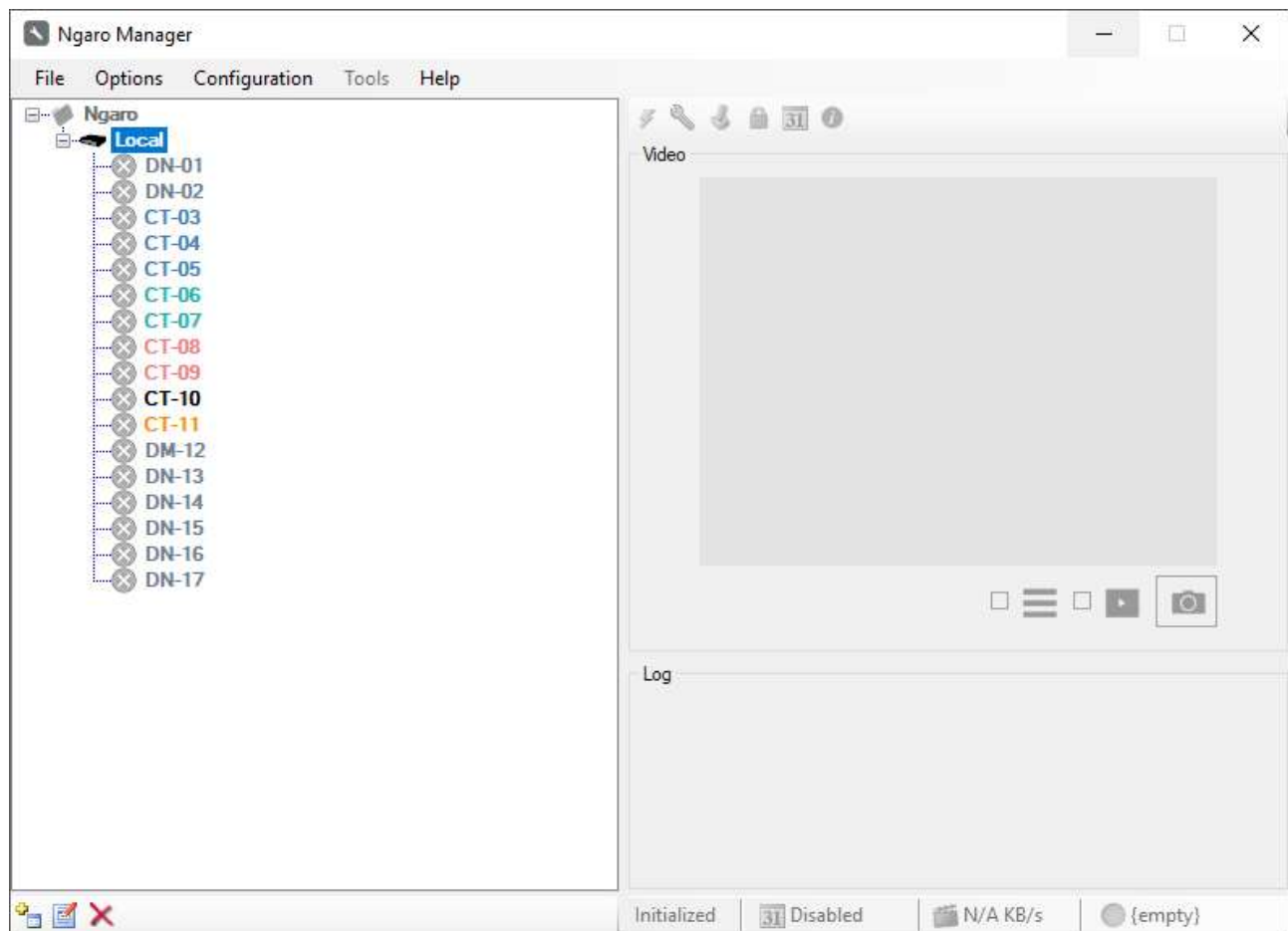



Figure 2: Main Window

Analytics setup

Once the parameters of the analytics are configured, select the analytics you want to configure and press the button  to connect.

After establishing the connection with the selected channel. Press the button  to open the selected analytics configuration wizard.

Configuration Wizard

The configuration wizard presents the following sections: General, Camera, Geo, Scenes, Calendar, Pugins and XML View

General Setup

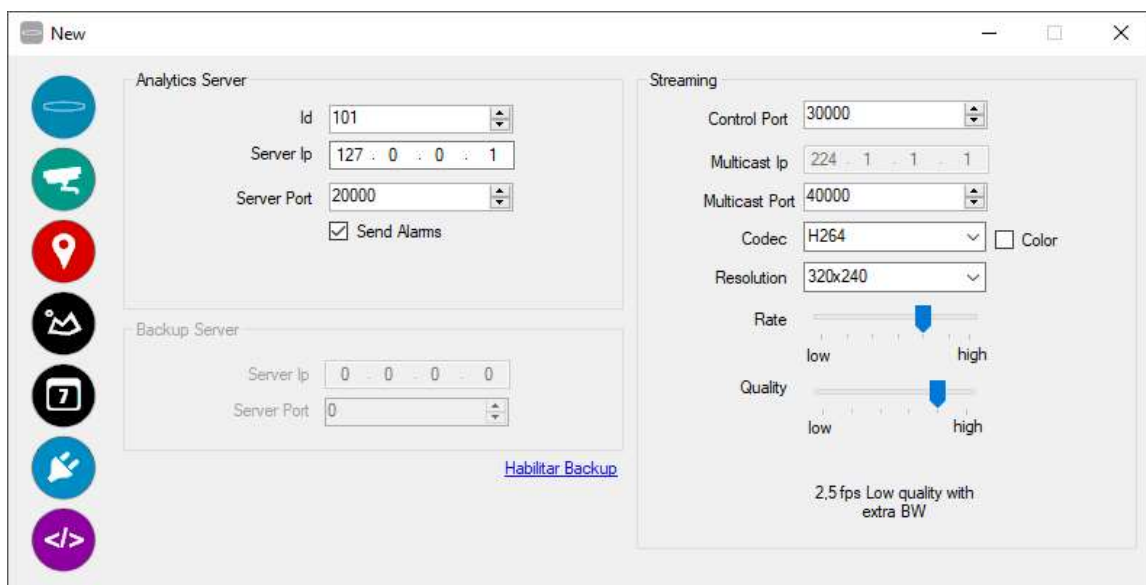


Figure 3: Configuration Wizard. General Setup

In the "Analytics Server" section, communications with the Ngaro® Server alarm server will be configured.

The "Streaming" section allows you to configure the video transmission within the Ngaro VMS. Allowing to optimize the bandwidth consumed between the analytics and control centers Ngaro® Viewer, Ngaro® Desktop, among others.

Camera Setup

In the "Camera" section, the interaction between the analysis channel and the associated camera will be configured. It is therefore one of the first points to be configured during the implementation phase. If supported, Pan&Tilt Unit communication is configured in the "P&T" section.

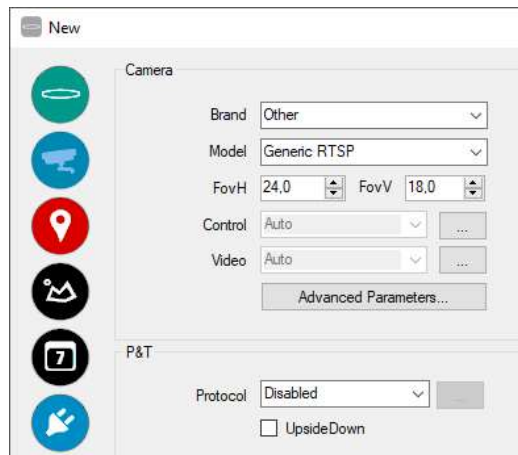


Figure 4: Configuration Wizard. Camera Setup

Geo Setup

In the "Location" section, the location and height of the cameras associated with the analytics are configured. While in the section "Reference P&T" it is used to adjust the presets with respect to the north.

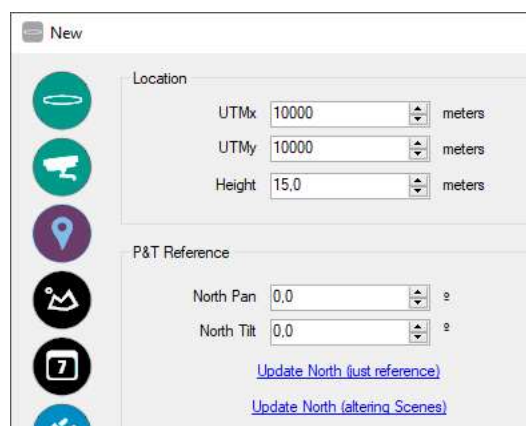


Figure 5: Configuration Wizard. Geo Setup

Scenes Setup

In the scenes tab It allows configuring the areas and the type of detection according to the user defined Calendar.

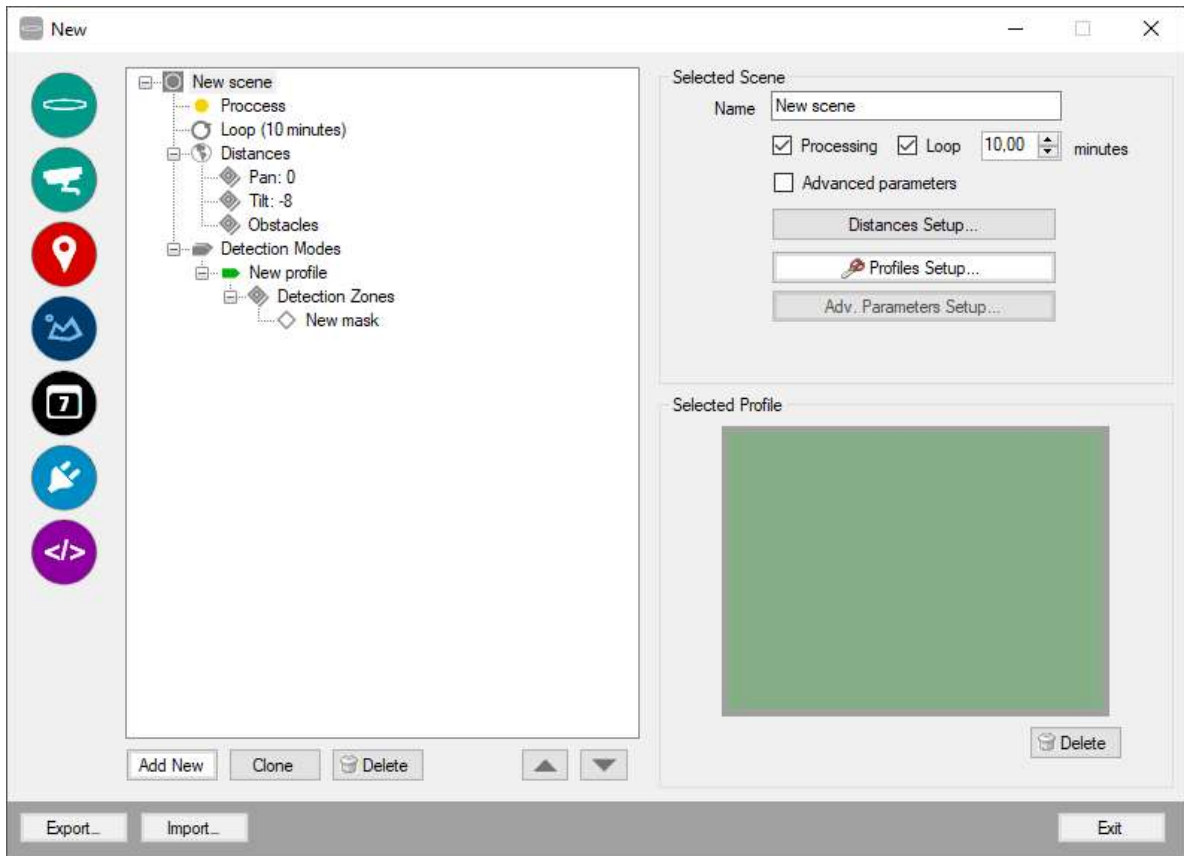


Figure 6: Configuration Wizard. Scenes Setup

Calendar

The calendar tab allows you to select the scenes that will be processed according to a schedule.

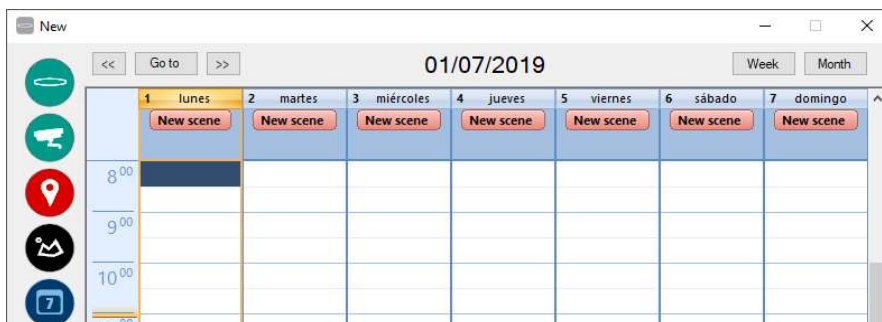


Figure 7: Configuration Wizard. Calendar

Plugins

There is the possibility of configuring a third-party server. Ngaro® Anytics is compatible with most of the main VMS on the market.

Ngaro® Connect VMS: Milestone

There is the possibility of configuring a third-party server. Ngaro® Analytics is compatible with most of the main VMS on the market. It is configured at the Plugins section of the Ngaro()R Manager's configuration wizard.

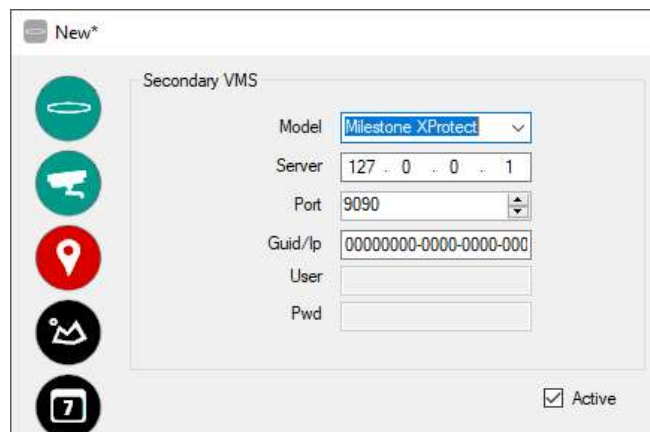


Figure 8: Configuration Wizard. Plugins (Milestone XProtect)

Each Ngaro analysis channel must be associated with a Milestone server camera using the ip of the camera (camera: port if it is a device with more than one channel) or the Guid of the camera within Xprotect if ip address is not supported.

Parameters are:

- **Model:** Milestone Xprotect
- **Server:** Ip address of the Milestone's server
- **Port:** Analytics Event's service por
- **Guid/Ip:** Ip or Guid of the camera channel associated to the Ngaro® Analytics channel

Ngaro Analytics allows different analysis profiles depending on the solution chosen by the client. It also allows the definition of custom events by selecting a custom id. Here are some examples of Milestone compatible Analytics Events.

- **Ngaro test:** Analytics Event for test purposes
- **Ngaro presence:** Ngaro Intrusion/prowling detection (Ngaro® Sentinel)
- **Ngaro permanence:** Ngaro abandoned/retired object detection (Ngaro® Sentinel)
- **Ngaro frontier:** Ngaro border crossing detection (Ngaro® Sentinel)
- **Ngaro vessel:** Ngaro maritime detection (Ngaro® Coastguard)
- **Ngaro custom 201:** Custom alarm defined by user, id custom 201