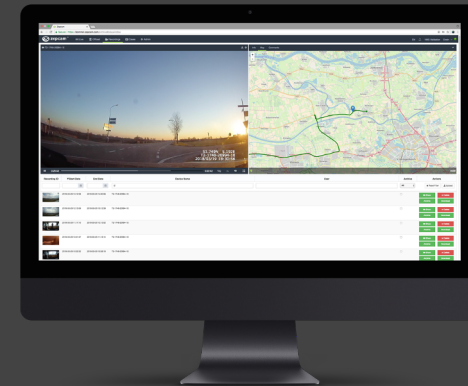




zepcamTM

MOBILE VIDEO TECHNOLOGY



ZEPCAM - MILESTONE INTEGRATION
GENERAL DESCRIPTION

MAY 2020

SOLUTION DESCRIPTION

Zepcam bodycam solution + Milestone XProtect

- The Zepcam bodycam solution can be integrated with Milestone XProtect
- This makes it possible to view and manage recorded bodycam video using Milestone XProtect
- The solution exists of: Zepcam T2 system (T2 / T2+ bodycams, docking station, Zepcam Manager software) and Milestone XProtect
 - Zepcam Manager software: manage system, devices, users
 - Milestone XProtect: view and manage videos
- The Zepcam Milestone XProtect integration is done at the server level using Onvif Profile G

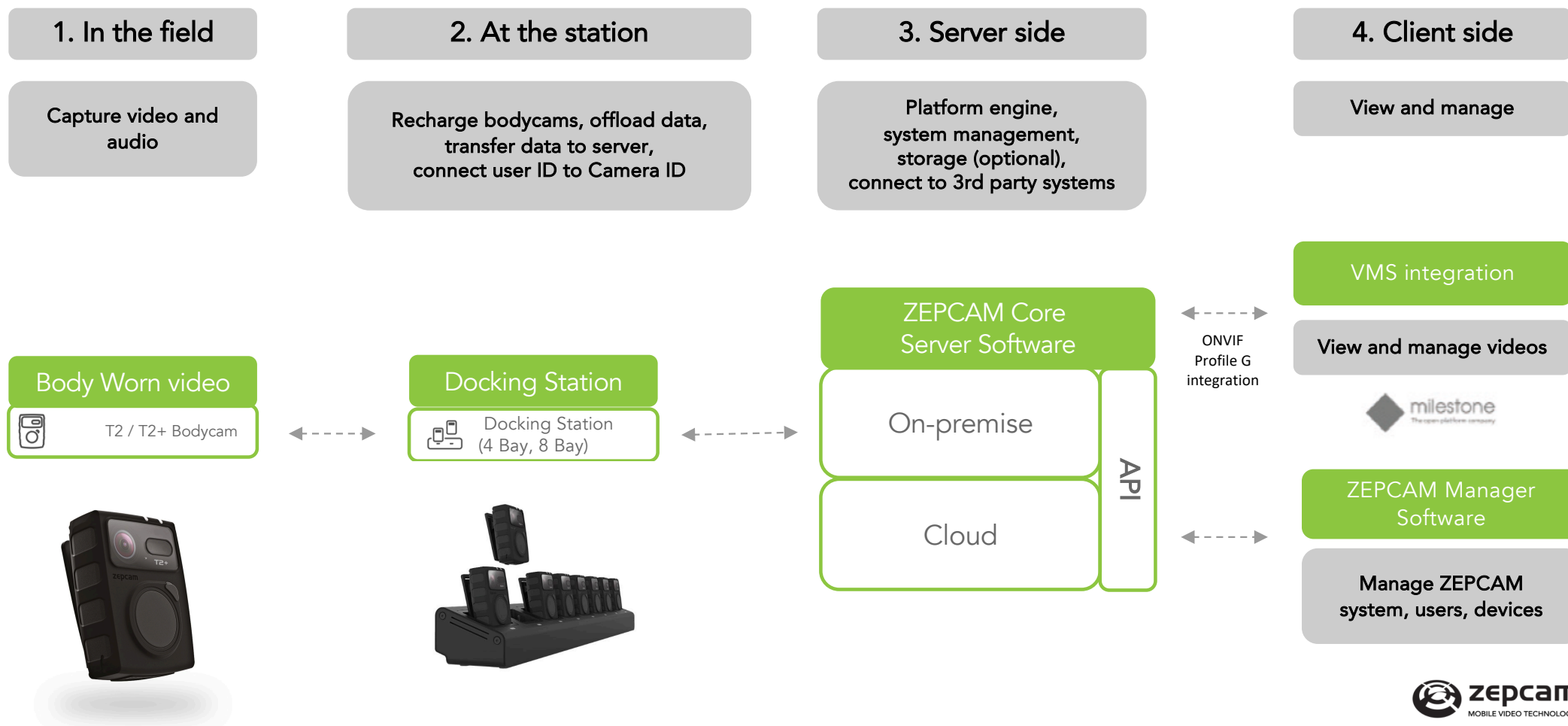
KEY BENEFITS

Zepcam Bodycams and Milestone VMS

- View and manage recorded bodycam footage in your video management software of choice: Milestone Xprotect
 - Have all video (fixed and mobile cams) in one place with one interface
 - Analyse bodycam video and fixed cam video in 1 view
- Bodycams improve employee security, generate strong evidence and reduce false claims
 - Full shift recording possible with Zepcam T2 bodycam
 - Easy and fast recharge and data offload using Zepcam docking stations with local data buffering
- Decentralized bodycam use
- Centralized user management and device management
- Easy to setup and to integrate using Onvif Profile G

HOW IT WORKS

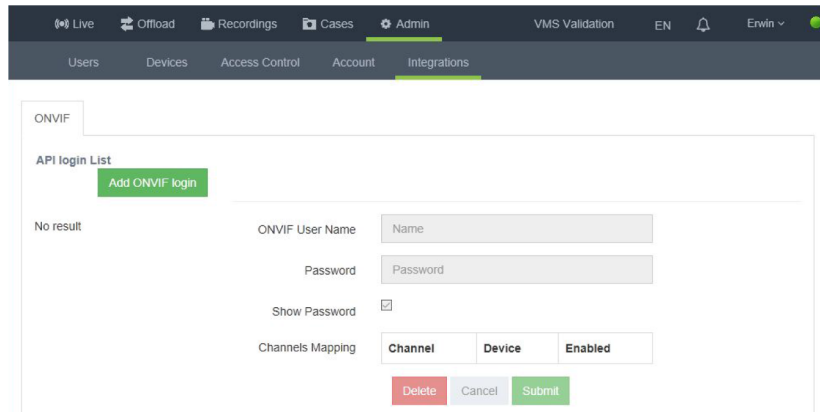
From ZEPCAM bodycam to Milestone XProtect in 4 steps:



INTEGRATION PROCESS

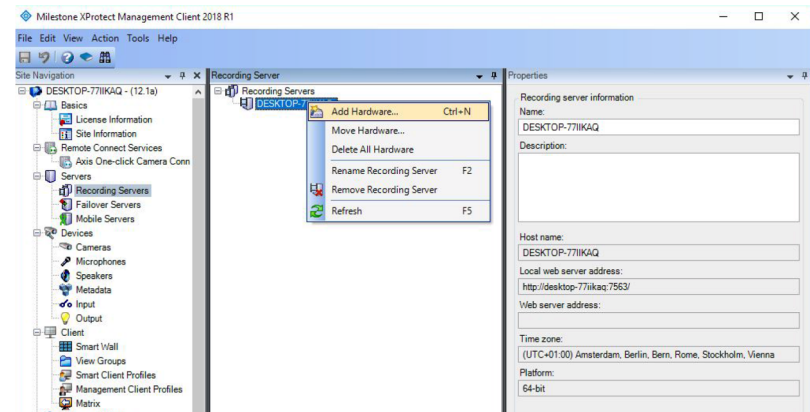
How to integrate Zepcam Core and Milestone

- Easy integration of Zepcam Core and Milestone XProtect
- Based on Onvif Profile G



The screenshot shows the Zepcam Core Admin interface. The top navigation bar includes 'Live', 'Offload', 'Recordings', 'Cases', 'Admin', 'VMS Validation', 'EN', and 'Erwin'. The 'Admin' tab is active, and the 'Integrations' sub-tab is selected. The main content area is titled 'ONVIF' and contains an 'API login List' with an 'Add ONVIF login' button. Below this, there is a 'No result' message. The 'ONVIF User Name' field is labeled 'Name' and the 'Password' field is labeled 'Password'. There is a 'Show Password' checkbox and a 'Channels Mapping' table with columns 'Channel', 'Device', and 'Enabled'. At the bottom, there are 'Delete', 'Cancel', and 'Submit' buttons.

Zepcam Core



The screenshot shows the Milestone XProtect Management Client interface. The top navigation bar includes 'File', 'Edit', 'View', 'Action', 'Tools', and 'Help'. The 'Recording Servers' tab is active. The main content area shows a tree view of the system configuration. The 'Recording Servers' folder is expanded, and a context menu is open with options: 'Add Hardware... (Ctrl+N)', 'Move Hardware...', 'Delete All Hardware', 'Rename Recording Server (F2)', 'Remove Recording Server', and 'Refresh (F5)'. The 'Properties' pane on the right shows the 'Recording server information' for 'DESKTOP-77IIKQAQ', including fields for 'Name', 'Description', 'Host name', 'Local web server address', 'Web server address', 'Time zone', and 'Platform'.

Milestone XProtect

THANK YOU



ZEPCAM BV
Hogeweg 29
5301 LB Zaltbommel
The Netherlands

T: +31 85 3010290
E: contact@zepcam.com
www.zepcam.com