



zepcamTM

MOBILE VIDEO TECHNOLOGY



ZEPCAM - MILESTONE INTEGRATION

GENERAL DESCRIPTION

MAY 2019

- FOR WHOM: this document is meant for sales and marketing reasons. Background info for sales & partners, marketing.
- Goal is to explain how the integration works, explain the concept and benefits.
- It is not a manual with detailed technical information.
- Please contact our support department for full installation manual.

SOLUTION DESCRIPTION

Zepcam bodycam solution + Milestone XProtect

- The Zepcam bodycam solution can be integrated with Milestone XProtect
- This makes it possible to view and manage recorded bodycam video using Milestone XProtect
- The solution exists of: Zepcam T2 system (T2 bodycams, docking station, Zepcam Manager software) and Milestone XProtect
 - Zepcam Manager software: manage system, devices, users
 - Milestone XProtect: view and manage videos
- The Zepcam Milestone XProtect integration is done at the server level using Onvif Profile G

BODYCAM CAPTURE AND OFFLOAD PROCESS

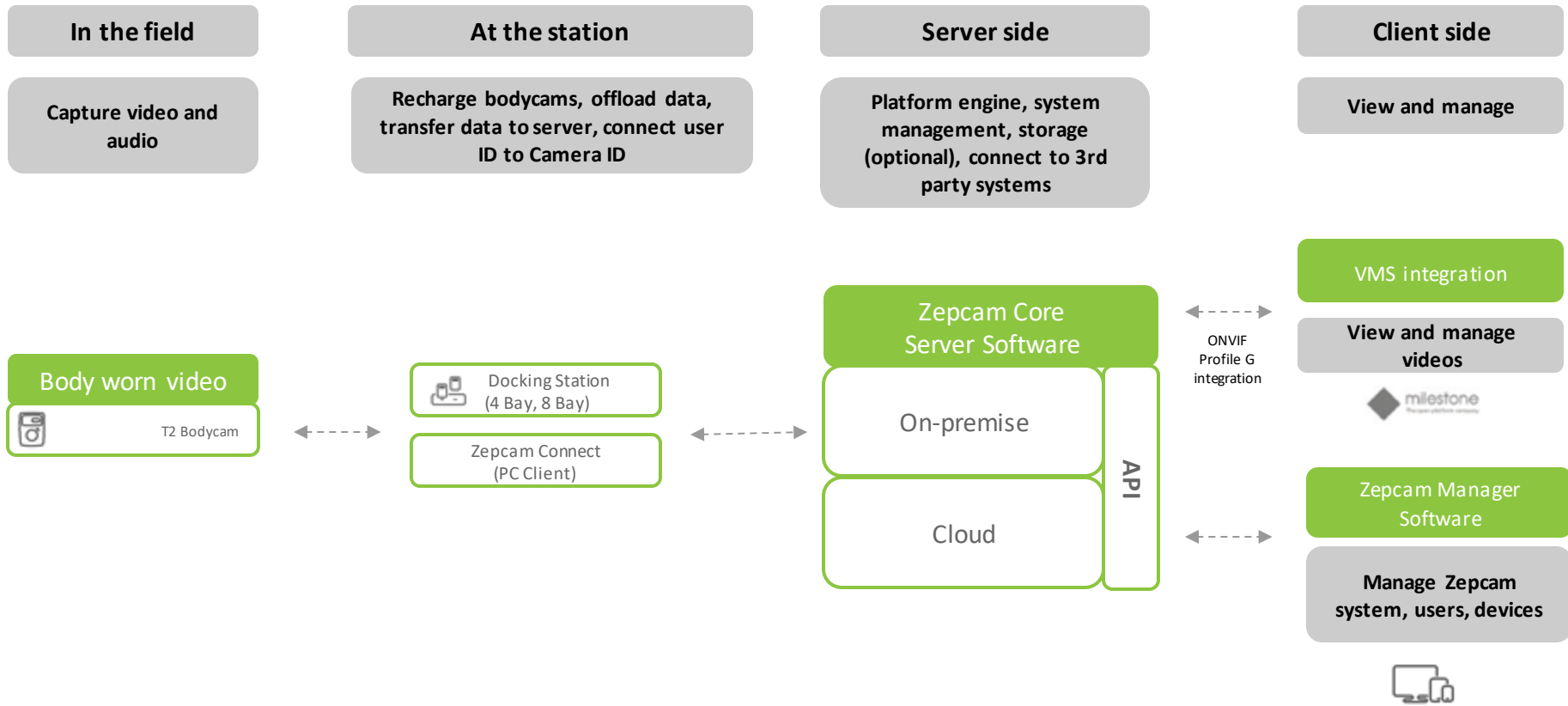
From bodycam to Milestone XProtect in 4 steps:

1. CAPTURE: Officer with bodycam captures video evidence
2. DOCK: Place bodycam in docking station
3. OFFLOAD: Auto offload from docking station to server (Zepcam Core) and auto import into Milestone
4. VIEW: View and manage bodycam videos in Milestone



SYSTEM ARCHITECTURE

Main solution elements



KEY BENEFITS

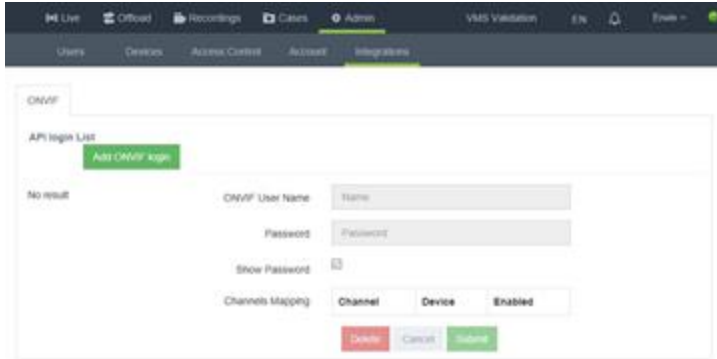
Zepcam Bodycams and Milestone VMS

- View and manage recorded bodycam footage in your video management software of choice: Milestone Xprotect
 - Have all video (fixed and mobile cams) in one place with one interface
 - Analyse bodycam video and fixed cam video in 1 view
- Bodycams improve employee security, generate strong evidence and reduce false claims
 - Full shift recording possible with Zepcam T2 bodycam
 - Easy and fast recharge and data offload using Zepcam docking stations with local data buffering
- Decentralized bodycam use
- Centralized user management and device management
- Easy to setup and to integrate using Onvif Profile G

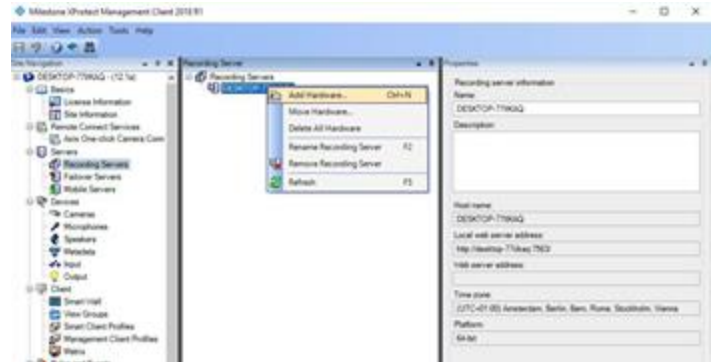
INTEGRATION PROCESS

How to integrate Zepcam Core and Milestone

- Easy integration of Zepcam Core and Milestone XProtect
- Based on Onvif Profile G



Zepcam Core



Milestone XProtect

PLEASE CONTACT US FOR SUPPORT



ZEPCAM BV
Hogeweg 29
5301 LB Zaltbommel
The Netherlands

T: +31 85 3010290
E: contact@zepcam.com
www.zepcam.com