



PERIDECT



Professional perimeter intrusion detection system



PROTECTS YOUR PERIMETER MORE EFFECTIVELY

- + Detects an intruder **directly on the boundary** of the protected area
- + Suitable for **various types of fences**
- + Gains **sufficient time** for the security operator for an **effective reaction**
- + For medium-sized and large installations



PERIDECT+ FEATURES AND BENEFITS

+ Extremely low false alarm rate

Unique algorithm comparing data from neighbouring detectors dramatically reduces false alarms (wind...)

+ Cost effective solution

One control unit CUP+ (with two line controllers LCP+) cover up to 3 km of your perimeter

+ Native integration with IP cameras

IP PTZ camera can be automatically directed to move to the intrusion area for two-step verification

+ Detection accuracy

Addressable vibration sensors fitted at each fence panel support very high detection accuracy

+ Antivandal solution

Stainless steel tube for cables increases protection against mechanical damage and EM interference



PERIDECT+ FEATURES AND BENEFITS

+ Galvanic isolation of detection line

Each detection line is galvanically isolated from the LCP+ unit to provide much higher EM immunity

+ Redundancy

Ring connection with one control unit and two line controllers (master/slave) can be used for system back up in case of detection line interruption or a short circuit

+ Modularity

Modular architecture allows easy modification and system extension in the future

+ Integration with 3rd party systems

Programmable outputs and an open API are available for 3rd party system integration

+ Symmetrical connection of detectors

A two-wire connection simplifies installation and increases system resistance to EM interference



INDUSTRIES AND APPLICATIONS

- + Industrial and commercial sites
- + Strategic and critical infrastructure

- + **Power plants**
- + **Airports**
- + **Prisons**
- + **Military areas**
- + **Embassies**
- + **National borders**



Professional perimeter intrusion detection system

TECHNICAL FEATURES

- + Up to **500 addresses** per one Line Controller – up to 1.5 km of perimeter
- + Safeguarded detection line – **master and slave** redundant system
- + **Separators** securing the operation of the line in case of short-circuit
- + **Individual set up** of each detector (sensor)
- + Higher communication speed – increased quantity of evaluated data
- + **LAN, RS485** connections directly build in the CUP+ control unit
- + **No moving parts** – higher reliability
- + **Analogue cameras** support



PERIDECT+ VERSIONS

+ PERIDECT+ Standard

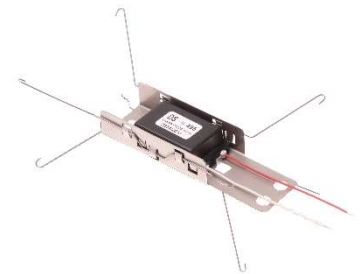
- > Basic version
- > Supplied with detectors connected from manufacturer production
- > UV resistant two-wire cable for outdoor use

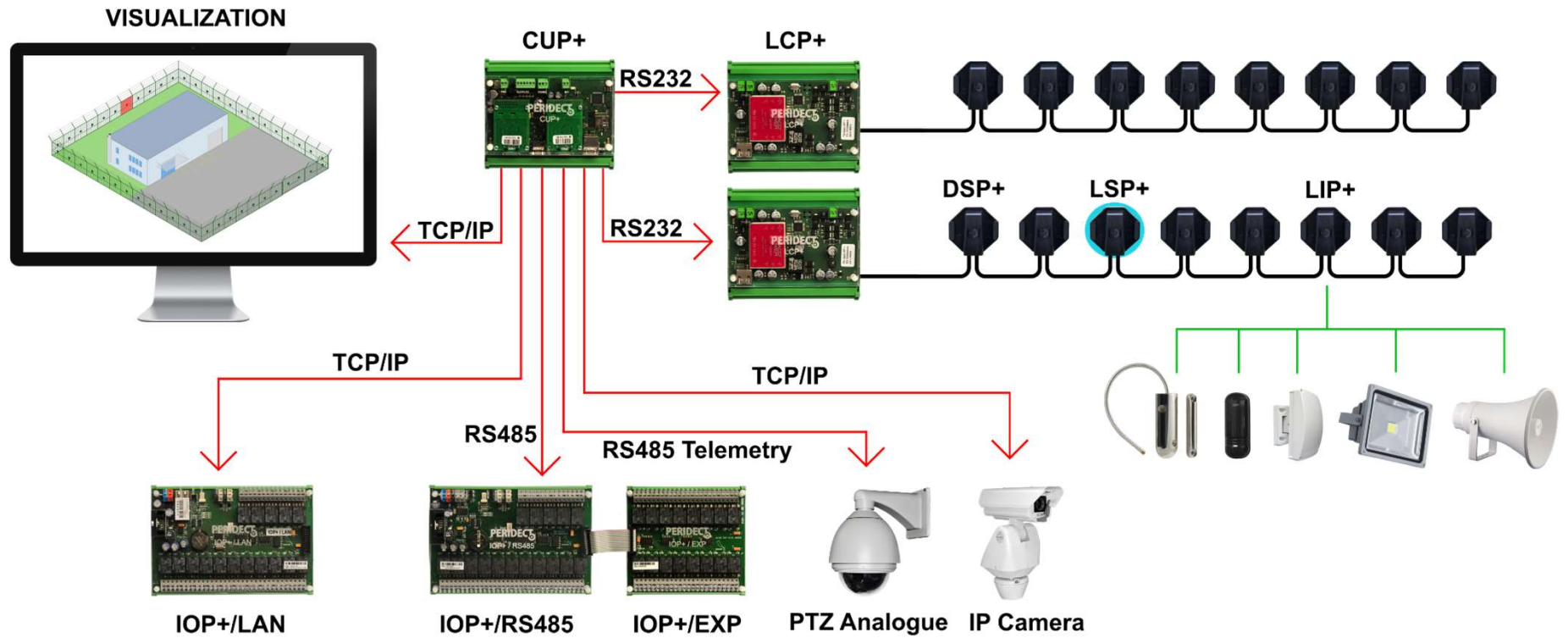
+ PERIDECT+ Antivandal

- > Cable protected by stainless steel tube
- > Increased resistance version
- > Protection against mechanical damage and electromagnetic interference

+ PERIDECT+ Hidden

- > Invisible detection system
- > Detectors installed inside posts
- > Supplied disassembled



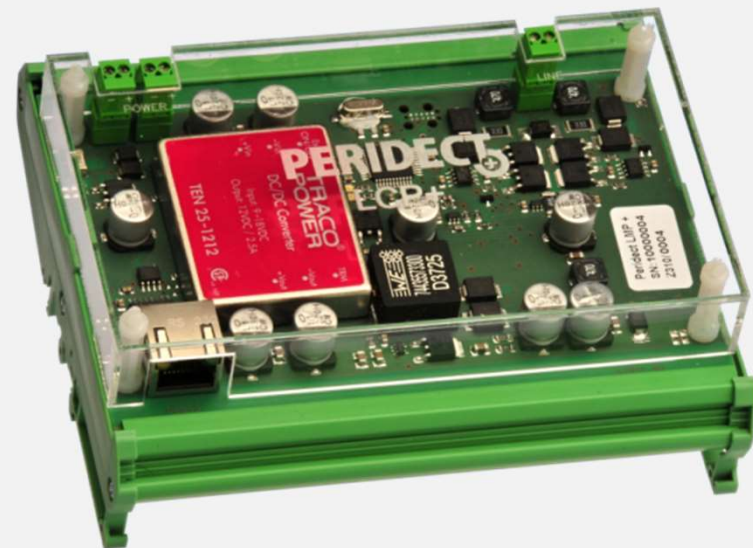


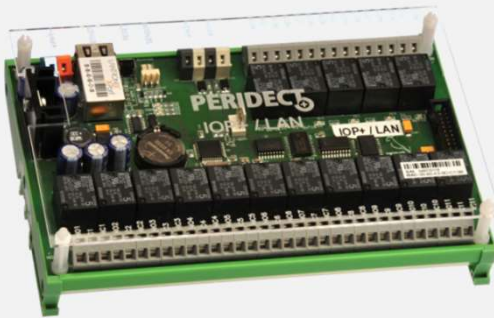
Control Unit PERIDECT+ (CUP+)

- > Modular Industrial Computer
- > LAN - TCP/IP for connection to Internet
- > 4x directly controlled logical outputs
- > 2x inputs for line modules (LCP+, PVJ, etc.)
- > RS485 communication bus integrated

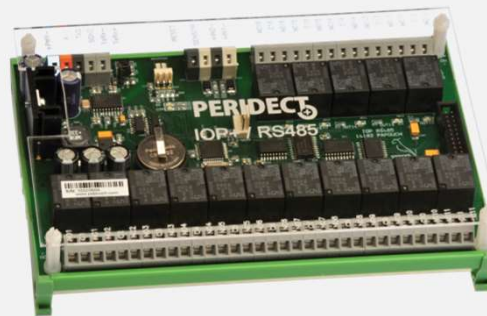
Professional perimeter intrusion detection system

- > Line module for communication with detection line
- > Galvanic isolation of detection line
- > Up to 500 detectors DSP+ or other modules
- > Immune symmetric communication

Line Controller PERIDECT+ (LCP+)

I/O LAN Module PERIDECT+ (IOP+/LAN)

- > 16 relay outputs
- > Switching contacts
- > 2 double balanced inputs

I/O RS485 Module PERIDECT+ (IOP+/RS485)

- > 16 relay outputs
- > Switching contact
- > 2 double balanced inputs

I/O Expansion Module PERIDECT+ (IOP+/EXP)

- > Expansion module for IOP+/LAN and IOP+/RS485
- > Switching contacts
- > Additional 16 relay outputs

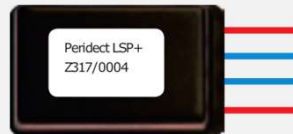
Detection line

Detection Sensor PERIDECT+ (DSP+)



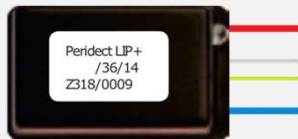
- > Increased sensitivity
- > Remote setting of sensitivity
- > Software sensitivity set up

Line Separator PERIDECT+ (LSP+)



- > Limits short-circuit on the detection line
- > Maximum 20 separators per one line
- > Built-in overvoltage protection

Line Input PERIDECT+ (LIP+)



- > 2 double balanced inputs + 1 output
- > Fitting on any place on the line
- > Max. 64 per one CUP+ (128 inputs)

Line Protector PERIDECT+ (LPP+)

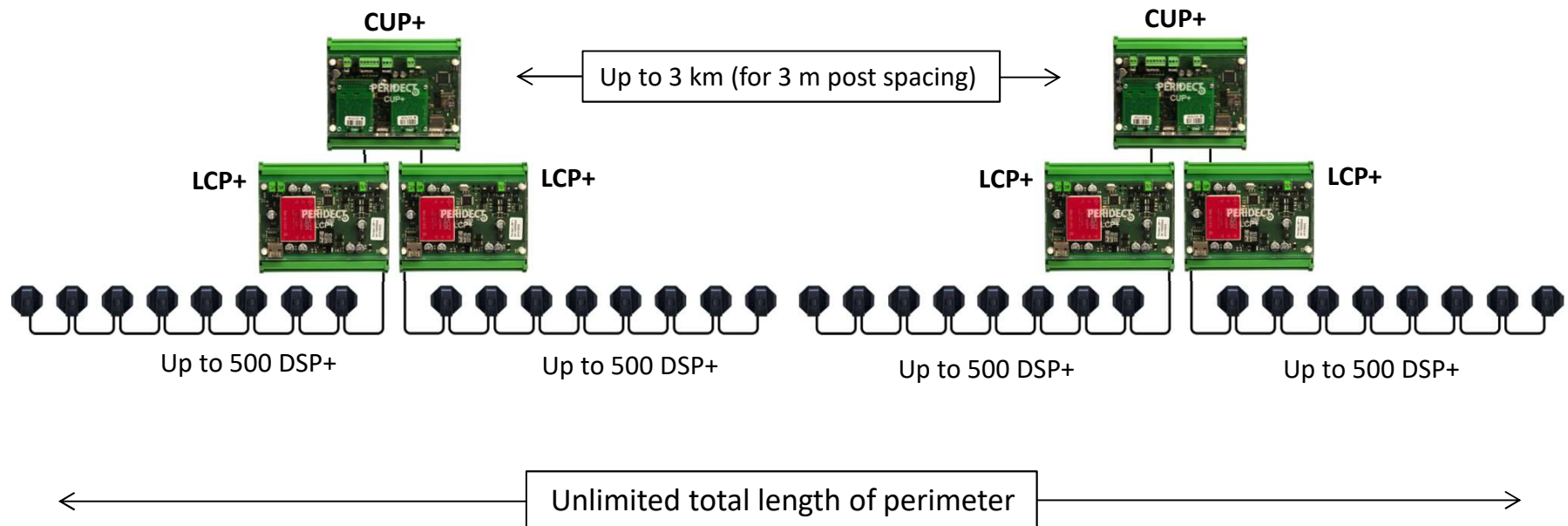


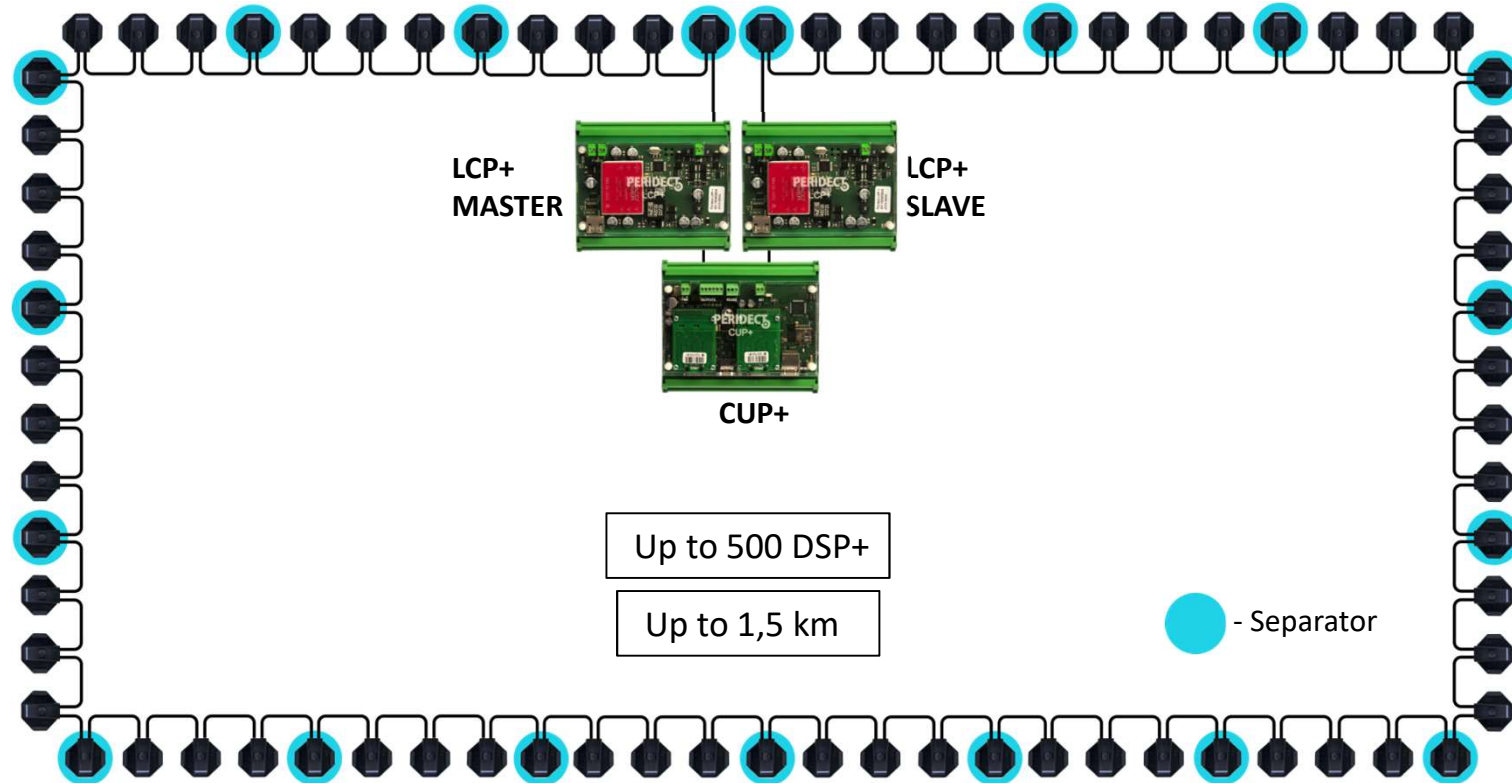
- > Overvoltage electronic protector

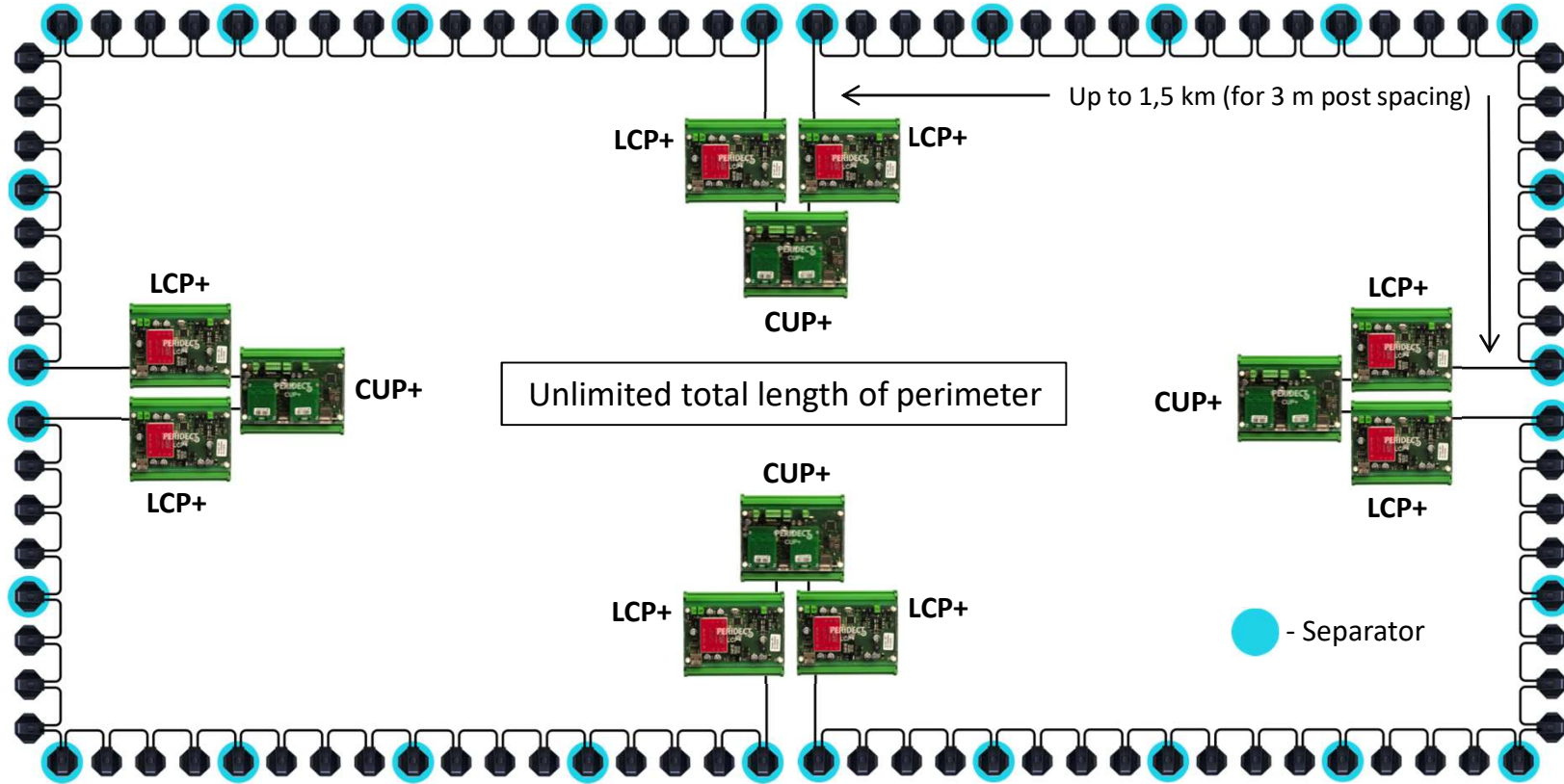
Plastic cover for all detection line components



- > UV resistant polycarbonate cover
- > Protection against unauthorized manipulation







Eliminate number of false alarms and protect
your perimeter even more effectively!

Sieza s.r.o.