

# **Sprinx TRAFFIX & Milestone XProtect**

Integration of Traffic Events

**User Guide**

version 1.1

# TABLE OF CONTENTS

<b>TABLE OF CONTENTS</b>	<b>2</b>
<b>OVERVIEW AND INTRODUCTION</b>	<b>3</b>
<b>HOW TO CONFIGURE SPRINX TRAFFIX</b>	<b>4</b>
<b>HOW TO CONFIGURE MILESTONE XPROTECT MANAGEMENT CLIENT</b>	<b>5</b>
ENABLE THE ANALYTICS EVENTS	5
CREATING THE ANALYTICS EVENTS	6
CREATING THE RULES	7

## OVERVIEW AND INTRODUCTION

This guide describes how to configure and integrate traffic events detected by Sprinx TRAFFIX software platform with Milestone XProtect VMS.

With the Milestone Analytics Events feature, Sprinx TRAFFIX platform can integrate with and hook into XProtect VMS and the XProtect event server.

When sending analytics events to the XProtect event server, Sprinx TRAFFIX includes in the XML message the IP address of the camera (<Source>) and the description of the traffic event (<Message>) which are used to match against the alarm definition created in the management client, and determines whether or not an alarm should be triggered.

Sprinx TRAFFIX (formerly SX-TRAFFIC) is a complete and professional server-based software for Automatic Incident Detection and Traffic Data Collection. It allows reliable detection of incidents and anomalies in traffic flow on critical infrastructures such as highways, tunnels and intersections.

In addition to analyzing images from standard IP cameras to detect traffic incidents, it is able to collect traffic events and data processed by Sprinx TRAFFIX Applications (edge-based software running onboard smart cctv cameras).

The following event detections are available:

- Stopped Vehicles
- Queue and Traffic Slowdown
- Wrong-way Drivers
- Pedestrians
- Spilled Cargo
- Loss of Visibility / Smoke
- Unsafe Lane Change
- Overspeed & Underspeed
- Vehicle Class Detection

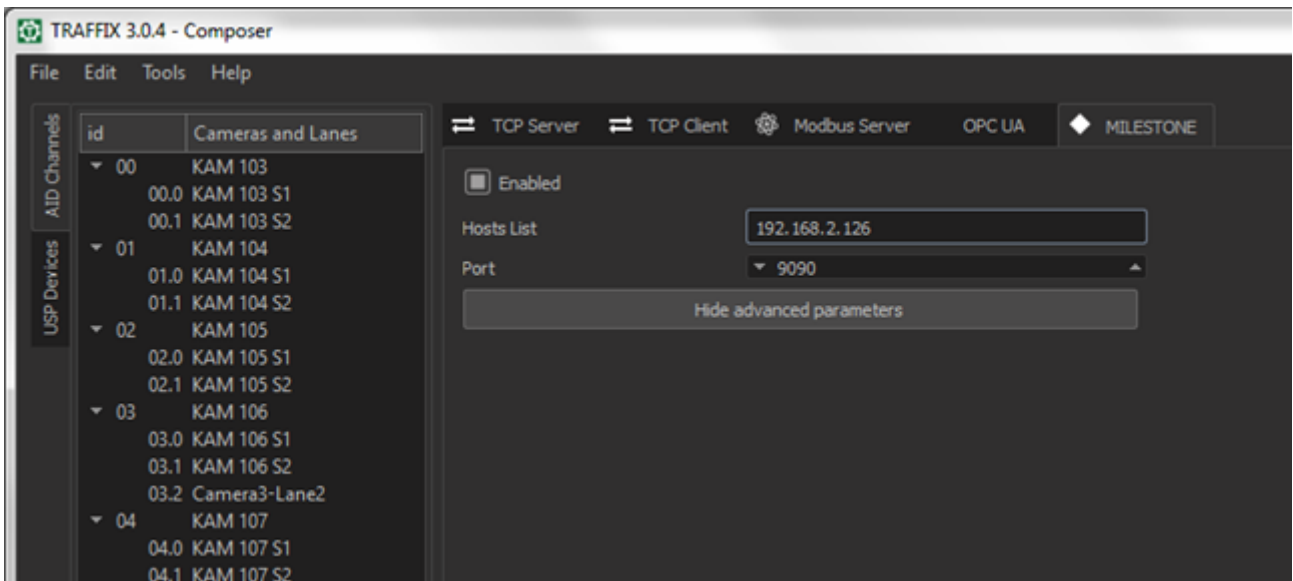
## HOW TO CONFIGURE SPRINX TRAFFIX

Login to Sprinx COMPOSER and select in the toolbar: Edit → Output Components

Enable the communication with the Milestone XProtect server.

Enter the IP address of the Milestone server and the communication port (9090 by default).

A comma-separated list of Milestone servers is supported by the TRAFFIX software.



**NOTE:** A specific software add-on is required to enable the communication between Sprinx TRAFFIX platform and Milestone XProtect VMS. To use this feature the TRAFFIX license must include that software add-on.

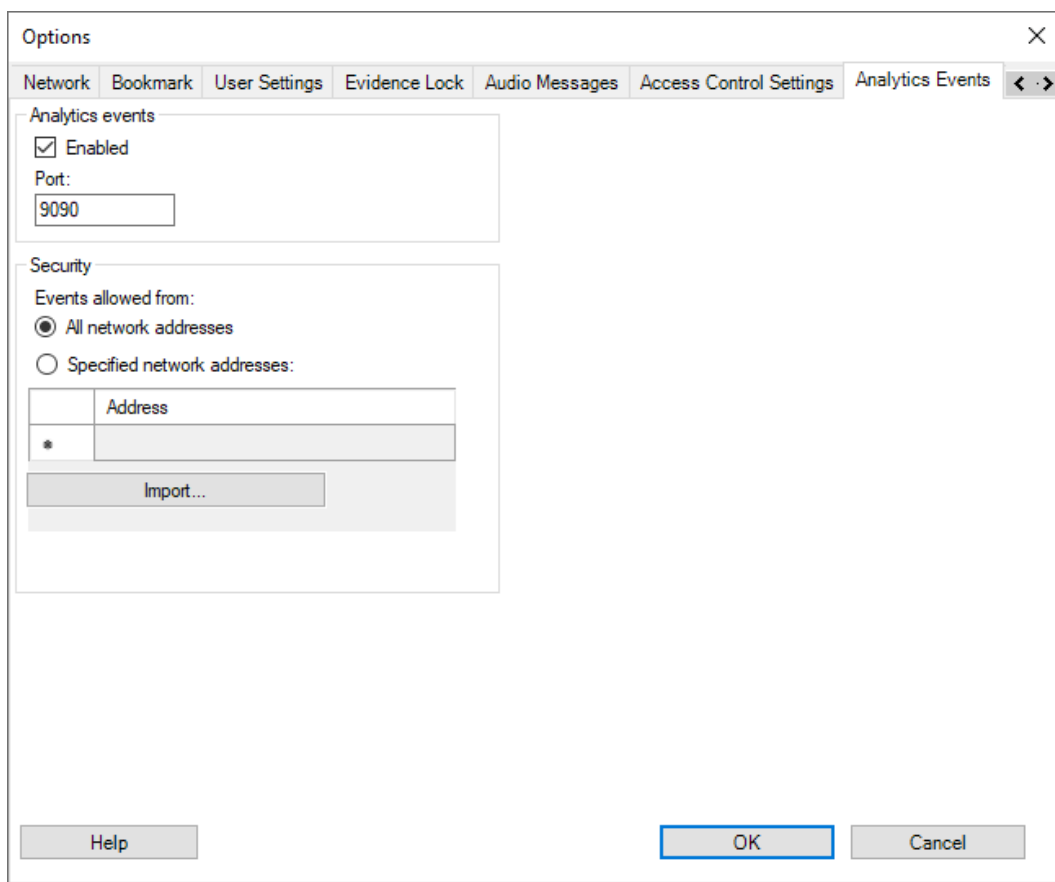
# HOW TO CONFIGURE MILESTONE XPROTECT MANAGEMENT CLIENT

## ENABLE THE ANALYTICS EVENTS

Login to XProtect Management Client and select in the toolbar: Tools → Options

Select the Analytics Events tab, enable the service and the listening port

A list of allowed addresses can be used to control who can send event data to the system.



The screenshot shows the 'Options' dialog box with the 'Analytics Events' tab selected. The 'Analytics events' section has 'Enabled' checked and the 'Port' set to '9090'. The 'Security' section has 'Events allowed from:' with 'All network addresses' selected. Below this is a table with one row containing an asterisk and an empty 'Address' field. An 'Import...' button is located below the table. At the bottom of the dialog are 'Help', 'OK', and 'Cancel' buttons.

	Address
*	

**NOTE:** Use the same port configured in the TRAFFIX software.

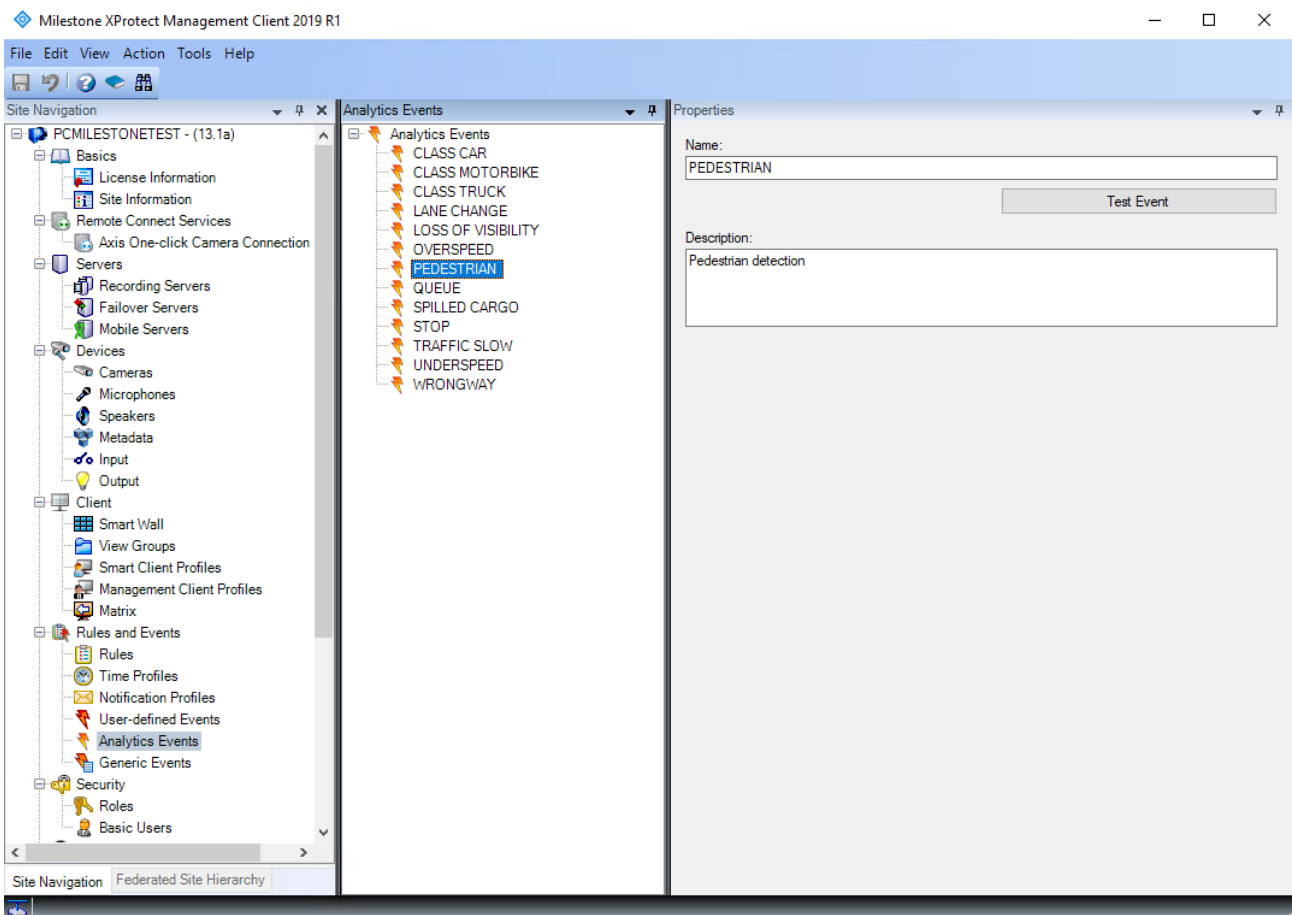
**NOTE:** Please refer to the XProtect Management Client documentation for more details.

## CREATING THE ANALYTICS EVENTS

In the Navigation Tree select Analytics Events under Rules and Events.

Create one Analytics Event for each traffic event/alarm with the following Name:

- Stopped Vehicle → STOP
- Queue → QUEUE
- Traffic Slowdown → TRAFFIC SLOW
- Wrong-way Driver → WRONGWAY
- Pedestrian → PEDESTRIAN
- Spilled Cargo → SPILLED CARGO
- Loss of Visibility/Smoke → LOSS OF VISIBILITY
- Unsafe Lane Change → LANE CHANGE
- Overspeed → OVERSPEED
- Underspeed → UNDERSPEED
- Vehicle Class Detection → CLASS MOTORBIKE or CLASS CAR or CLASS TRUCK

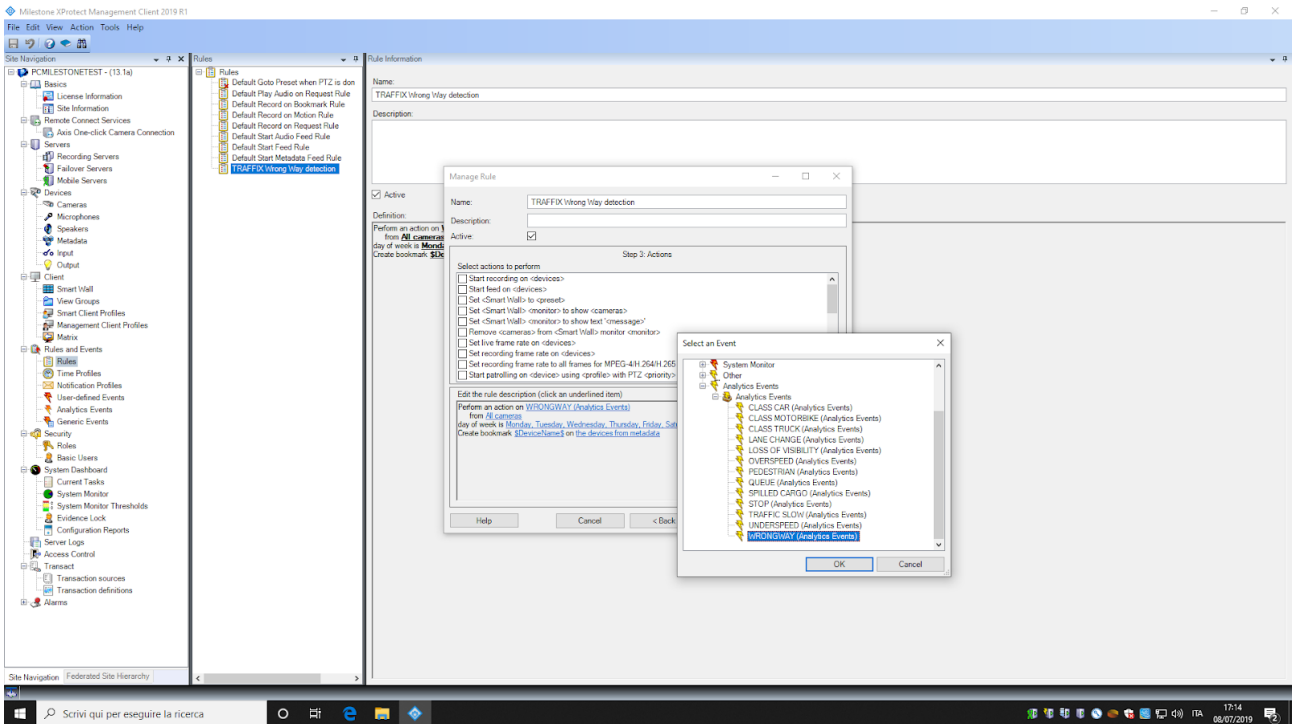


**NOTE:** Write the Name of the Analytics Event in capital letters.

## CREATING THE RULES

Once all the Analytics Events are created, select Rules in the Navigation Tree and add the new rules. Right-click the Rules item → Add Rule. This opens the Manage Rule wizard. The wizard guides you through specifying the content of your rule.

Select **Perform an action on event** and now you can select the Analytics Event that triggers the rule.



**NOTE:** Please refer to the XProtect Management Client documentation for more details.