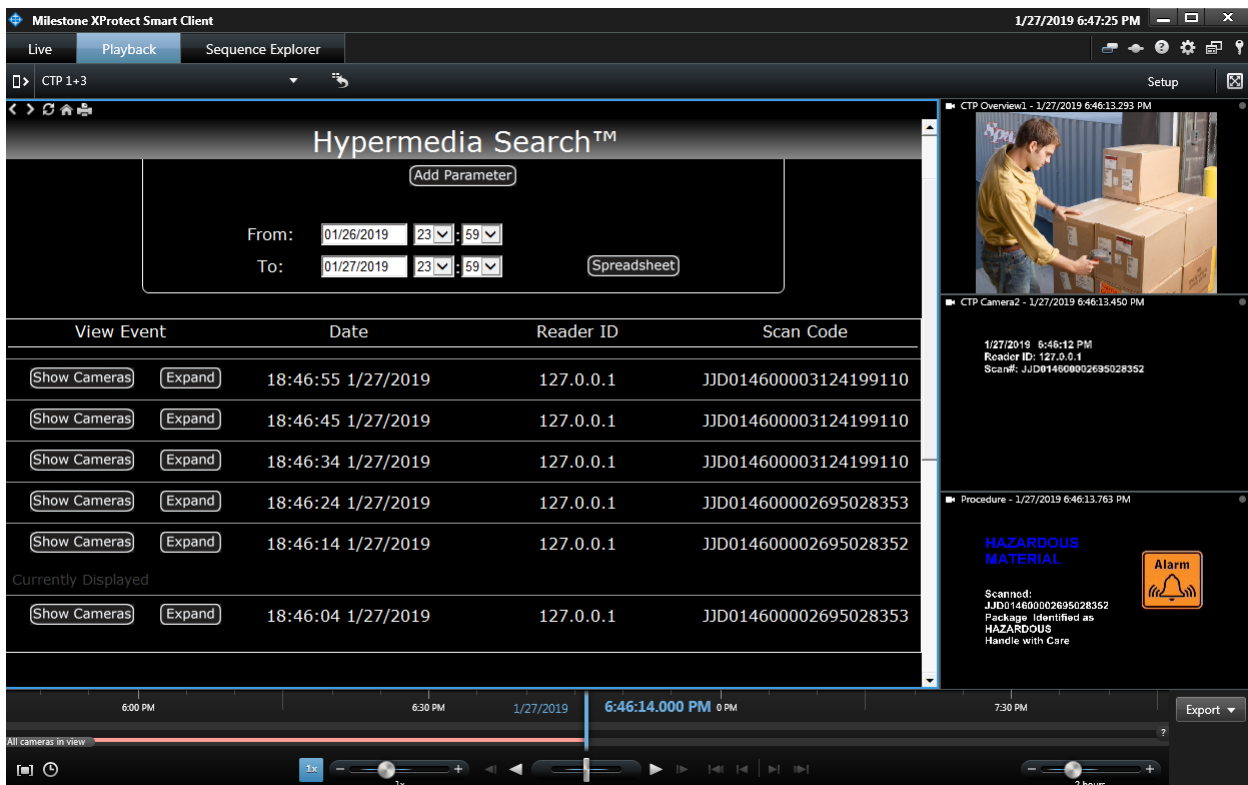




Shipping & Receiving



- Integrate your asset tracking /barcode system with XProtect establishing a Unified Security monitoring and analysis platform making your video management system (VMS) the ideal head-end.
- All asset tracking events are time synchronized with all area surveillance video.
- Real-time onscreen asset tracking activity, plus real time charting of specific events.
- User defined real-time onscreen event annotation as well as Email and SMS alerts.
- Powerful Hypermedia Search Engine links all text received with all stored surveillance video.
- Export spreadsheet reports as CSV files and display reports onscreen as a camera view.
- Report Manager spreadsheet provides a simple one-click selection of an event bringing up detailed parameters of the event all time synchronized with the video.



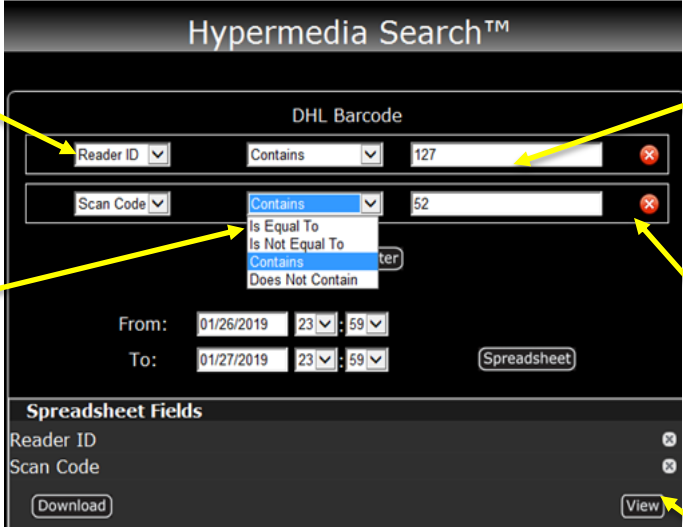
The screenshot shows the Milestone XProtect Smart Client interface. The main window displays a 'Hypermedia Search' results table with columns for 'View Event', 'Date', 'Reader ID', and 'Scan Code'. Below the table is a video playback window showing a worker scanning a box. The interface includes a search filter, a 'Spreadsheet' button, and a timeline at the bottom.

View Event	Date	Reader ID	Scan Code
Show Cameras Expand	18:46:55 1/27/2019	127.0.0.1	JJD014600003124199110
Show Cameras Expand	18:46:45 1/27/2019	127.0.0.1	JJD014600003124199110
Show Cameras Expand	18:46:34 1/27/2019	127.0.0.1	JJD014600003124199110
Show Cameras Expand	18:46:24 1/27/2019	127.0.0.1	JJD014600002695028353
Show Cameras Expand	18:46:14 1/27/2019	127.0.0.1	JJD014600002695028352
Currently Displayed			
Show Cameras Expand	18:46:04 1/27/2019	127.0.0.1	JJD014600002695028353

Video Playback Window Details:

- CTP Overview1 - 1/27/2019 6:46:13.293 PM
- CTP Camera2 - 1/27/2019 6:46:13.450 PM
- 1/27/2019 6:46:12 PM
- Reader ID: 127.0.0.1
- Scan#: JJD014600002695028352
- Procedure - 1/27/2019 6:46:13.763 PM
- HAZARDOUS MATERIAL
- Scanned: JJD014600002695028352
- Package Identified as HAZARDOUS
- Handle with Care
- Alarm icon

Select search parameter from drop down tab.

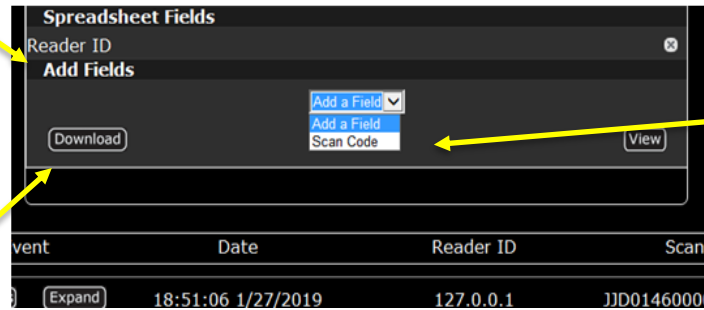


Use full or partial keywords from metadata to setup the search.

Qualify your search with equal to, not equal to, contains, etc.

Filter your search by adding multiple keywords.

Setup your spreadsheet columns using either default settings or add or delete columns.



Once your search parameters are defined select view to present results in table.

Add new column headings to your spreadsheet using drop down menu.

Select Download to export data in CSV format to a spreadsheet where you can create a visual representation of the data.

Add additional camera views during your forensic investigations.

Barcode Scan count

Use Snap Shot to print video and text images for your incident reports.

Add your notes to spreadsheet

DHL Report Entries: 888

Timestamp	ReaderID	ScanCode	ReportComment
1/27/2019 9:14:32 PM	127.0.0.1	JJD014600003124199110	
1/27/2019 9:14:22 PM	127.0.0.1	JJD014600002695028353	
1/27/2019 9:14:12 PM	127.0.0.1	JJD014600002695028352	
1/27/2019 9:14:02 PM	127.0.0.1	JJD014600002695028353	
1/27/2019 9:13:52 PM	127.0.0.1	JJD014600003124199110	

Integrating IP Data with Video Surveillance

