

# Raytec IP Lighting and Milestone VMS Integration

With the growth of IP surveillance, the need for dedicated network lighting is becoming increasingly important for all high security installations, to ensure full and dynamic control over site security 24/7.

Network lighting now plays an increasingly important role in a fully integrated security system. It is designed to seamlessly operate in conjunction with all IP cameras, platforms, and other network devices to create a smart system capable of delivering an instant, situation-dependent response for improved security and safety.



## Raytec and Milestone Integration at a Glance

Raytec's range of VARIO IP Network Illuminators is the world's first CCTV lighting range to be fully integrated with Milestone's XProtect Video Management System.

Enabled via easy plug-in software, VARIO IP can be easily configured to respond 'on demand' to multiple alarms driven by a number of different Milestone system devices, for the most visual and instant response to events on site.

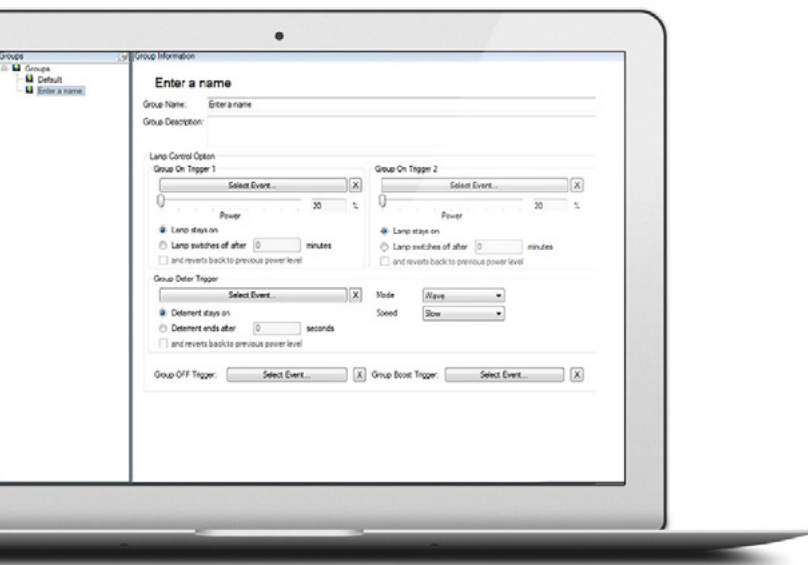
Available in Infra-Red or White-Light LED variants, VARIO IP can be controlled individually or in groups making it much easier to control large sites. Operators can also make live adjustments to any single Raytec illuminator or group of illuminators via the Smart Client any time, to optimise image quality for the best night time surveillance 24/7.



*Live Lighting Operation within Milestone Smart Client*

- VARIO IP lighting integration with XProtect VMS
- Easy management and seamless operation in conjunction with all system devices
- Configure instant lighting response to events
- Live control over lighting for the best CCTV images 24/7
- Infra-Red and White-Light LED
- Free Plug-in Software





*Configuring Event Driven Lighting Response within Milestone Management Application*

## Instant response to system events

VARIO IP Network Illuminators are highly customisable and can be easily tailored within the Milestone Management Application to meet the exact requirements of any installation.

VARIO IP is designed to provide a smart, event driven lighting system which can be instantly triggered by alarms from multiple devices: such as a camera, detector or other network device. It can be configured to provide an automatic and visible lighting response in the exact place that an event is occurring – providing a highly effective crime deterrent.

In the same way, Infra-Red lighting can be activated along with camera recording in response to a site event. Raytec IR lighting provides the covert illumination needed to capture high quality night time images and enable accurate video analytics in complete darkness.

## Situational lighting response

The integration also enables VARIO IP to respond to a multi-layered alarm system. Different network devices can trigger the same illuminator/group of illuminators to provide customised lighting responses dependent on the specific situation on site at any given time. E.g. the same group of perimeter illuminators can be configured to provide general illumination at 20% power during the hours of darkness (photocell driven), boosting to 100% power upon motion detection, and then changing to a deterrent (flashing) light output if the fence line is breached. This means that the entire perimeter can respond instantly to threat in the most visual way possible.

Using lighting in this way, only where and when needed, creates a responsive system designed to deliver maximum security whilst also reducing the overall system running costs.

## VARIO IP functionality within Milestone XProtect

- Individual or group control
- Event driven lighting triggered via alarm
- Instant live control of lighting at any time
- Power adjust: 20-100%
- Boost: 120% power for 10 seconds
- Deterrent lighting with selectable patterns and speeds
- Advanced timer functions
- Trigger 3rd party devices via illuminator auxiliary output

**The Raytec Milestone Plug-in is compatible with Milestone XProtect Corporate, Enterprise, Professional and Express and is free to download at [www.rayteccctv.com](http://www.rayteccctv.com)**

## Why Use Raytec lighting within your system

- **Better Images from your Cameras**

Raytec LED lighting delivers crisp, even illumination for the very best CCTV image quality at night at distances up to 700m.

- **Improved Video Analytics**

Good lighting reduces noise which allows video analytics to accurately identify subjects on scene, and successfully trigger alarms whilst significantly reducing false alarms.

- **Less bandwidth**

Good light enables clearer pictures with less noise (moving pixels), allowing video compression to work more effectively and lowering bandwidth consumption.

- **Less Storage**

Lower file sizes (as a result of improved video compression) leads to lower data storage requirements and to lower infrastructure costs.

- **Lower Energy Costs**

Raytec lighting significantly lowers system running costs, consuming far less power than traditional lighting solutions, and with smart techniques for activation on alarm it can reduce costs even further.

- **Responsive Lighting Acts as a Deterrent**

LED lighting from Raytec can instantly respond to activity on site, acting as a proactive crime deterrent with instant start lighting on alarm.





Global HQ

T: +44 (0) 1670 520055  
F: +44 (0) 1670 819760  
sales@raytec**cctv**.com

Americas

T: +1 613 270 9990  
T: +1 888 505 8335 (Toll Free)  
ussales@raytec**cctv**.com

[www.raytec\*\*cctv\*\*.com](http://www.raytec<b>cctv</b>.com)

