

Introduction

In this guide presents information about Vaelsys analytics devices integration with Milestone devices. Both systems can be completely integrated, the goal is receiving Vaelsys analytics events in Milestone.



This is not a detailed guide on how configure all systems but an informative bulletin. Please do not hesitate in **contacting us** to get a detailed walk through of how to perform this configuration.

Vaelsys

Calle Cochabamba 24, 1ºB
28016 Madrid

+34 91 804 62 48

vaelsys.com

Contact section, or by email:

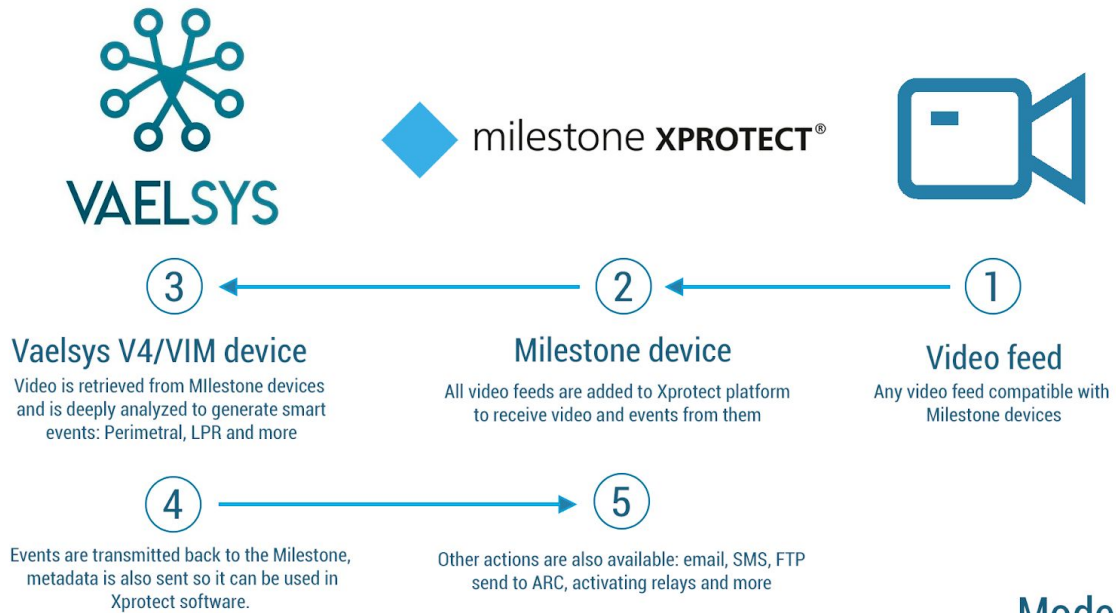
sales@vaelsys.com

info@vaelsys.com

Architecture

There is 2 possible architectures in which the system could be integrated with Milestone devices:

Mode I

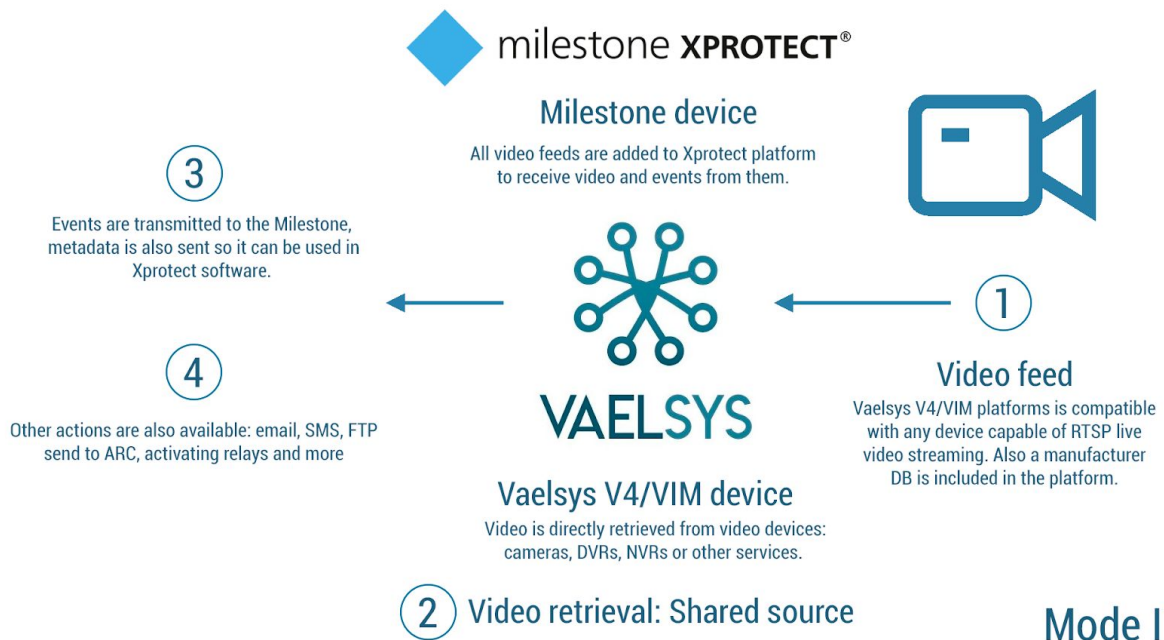


Mode I

All cameras are added to the Milestone device. Then, the video stream of each video source is streamed again to Vaelsys analytics device where is processed. Events are sent back to the Milestone device so can be managed as desired back in Milestone services.

Mode II

Vaelsys analytics devices also support getting video stream directly from video devices so this schema is also possible:

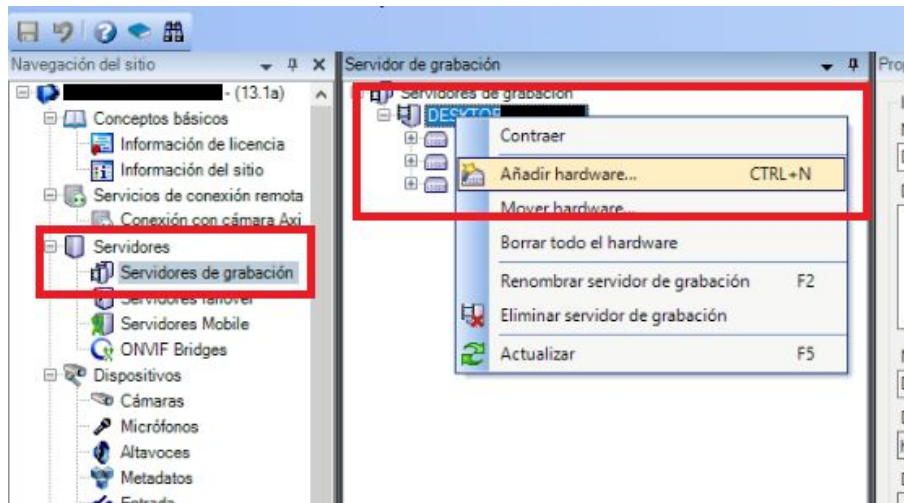


In this case, both the Milestone device and the Vaelsys analytics device gather video directly from video devices. Using this method has some advantages:

- Both the Milestone device and the Vaelsys analytics device can get different video streams from video devices, so resolution and video quality can be configured differently. This way, the Milestone device could be able to record video in high definition by receiving the primary stream from video devices while the Vaelsys device could be processing in a different resolution using the secondary stream.
- The Milestone device does not need to stream video to the Vaelsys device, so some performance is saved.

Getting video in Milestone

Video devices need to be added using Milestone XProtect Management Client, once opened, in Servers section, a contextual menu will appear when right-clicking.

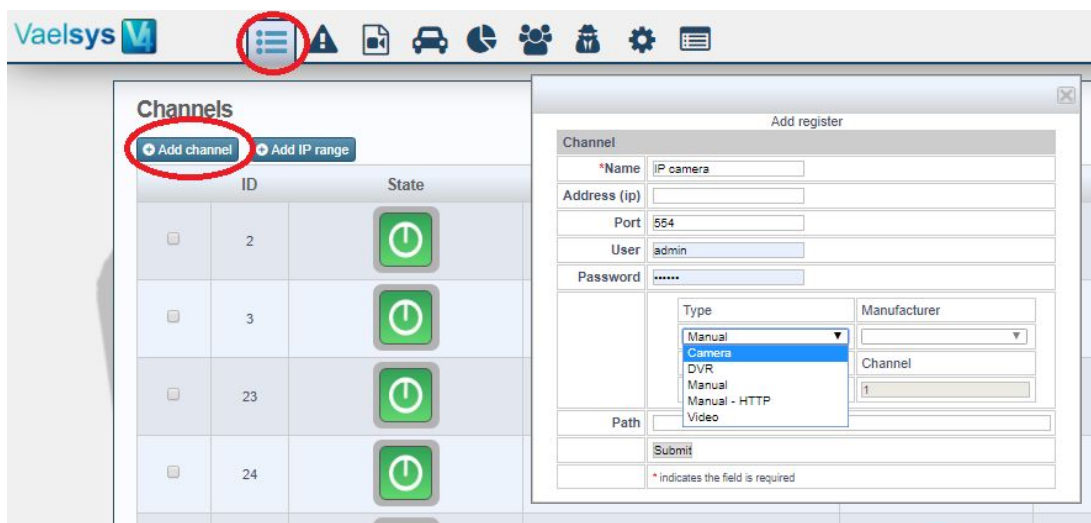


When clicking on “Add hardware”, a new window will appear. Continue the wizard to add the video devices as normal.

Getting video in VaelsysV4

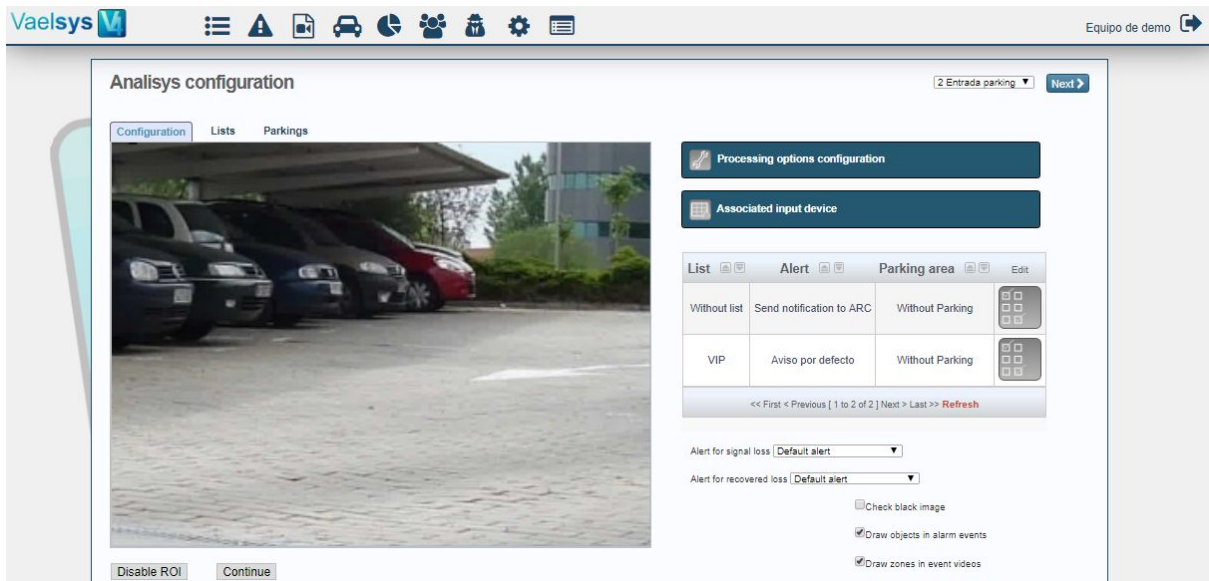
The next step will be adding the video channels to Vaelsys analytics device, depending on the mode, it will be done in a different way.

To do so, when logged on Vaelsys web interface, in the first tab (channels tab) a channel can be added by clicking on “Add channel”. A popup window will appear asking for channel details:



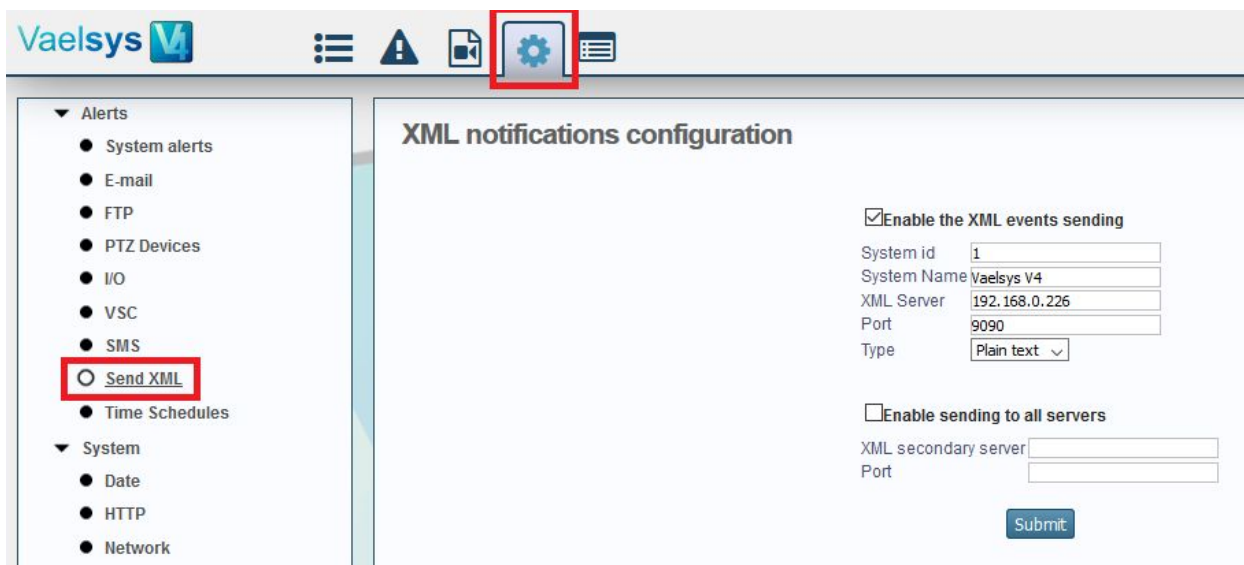
Configuring analytics

Depending on the analytic engines licensed in Vaelsys device, the configuration can be different:



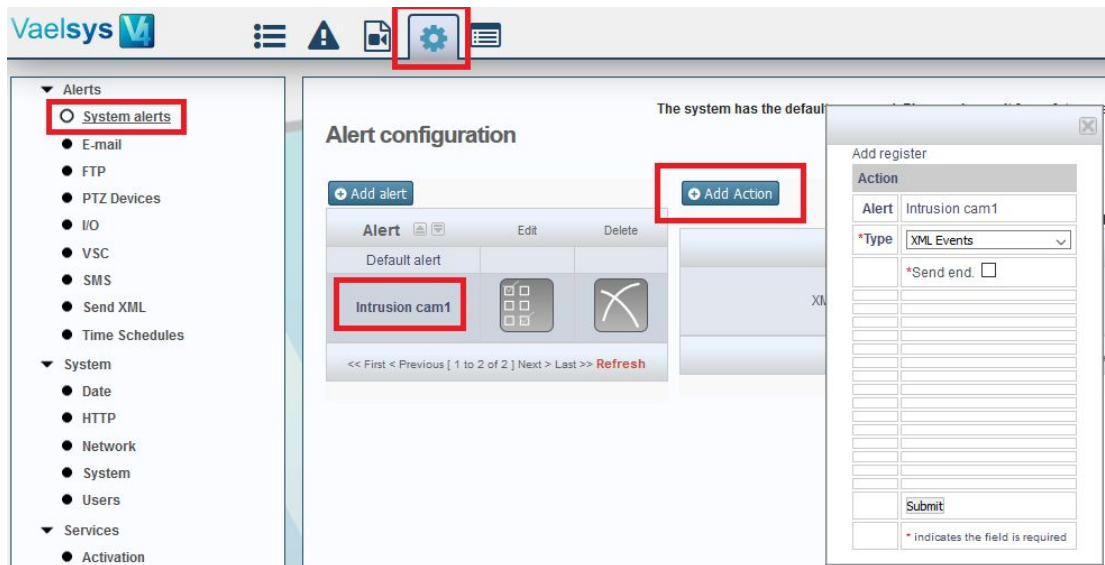
Configuring XML module

The first step to configure a Vaelsys device to send events to Milestone devices is configuring the XML module to send XML messages to a certain host. This configuration is on the configuration tab in Send XML section:



Adding XML action to alerts

All actions taken by a Vaelsys system in reaction to an event are configured through the alerts system. For the system to send an event to Milestone, the action “XML Events” need to be added the the alert associated to the desired event.



Configuring Milestone analytics event receiver service

The next step is configuring the Milestone device to listen in a particular port in order to receive events from third party devices. Is is also mandatory to add a new Analytics event to the Milestone configuration:

