



Threat Detection and Safety Enforcement

intuVision VA Security, intuVision's flagship video analytics product, is designed to meet all security and safety requirements protecting assets, people and facilities. Robust object classification, extensive set of event rules with arm/disarm schedules ensure the best solution for every use-case.

Ease of Deployment

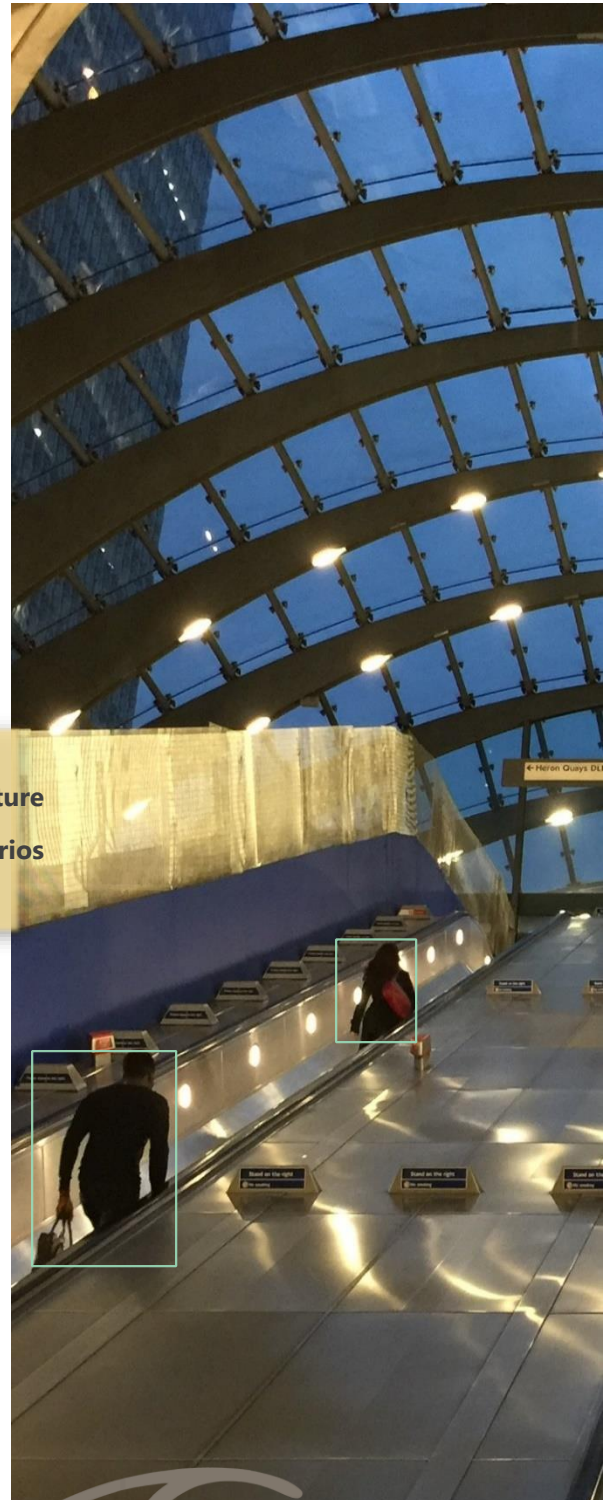
intuVision VA Security is compatible with virtually all IP cameras, integrated with major VMS's and easy to deploy as part of any security system. Triggers to and from 3rd party devices and the web API provide interoperability in an integrated security solution.

Secure buildings, public spaces, and protect infrastructure with patented algorithms proven in all scenes and scenarios

Extensive platform support makes intuVision VA an easy fit to any security system. Please refer to intuVision VA datasheet for general information.

Award Winning Performance

intuVision VA's patented algorithms deliver high accuracy detections and the lowest false alarm rate in challenging environments as confirmed by receiving top ranks in independent government and organizational evaluations, while the industry leading GPU acceleration guarantees the lowest hardware cost per channel.





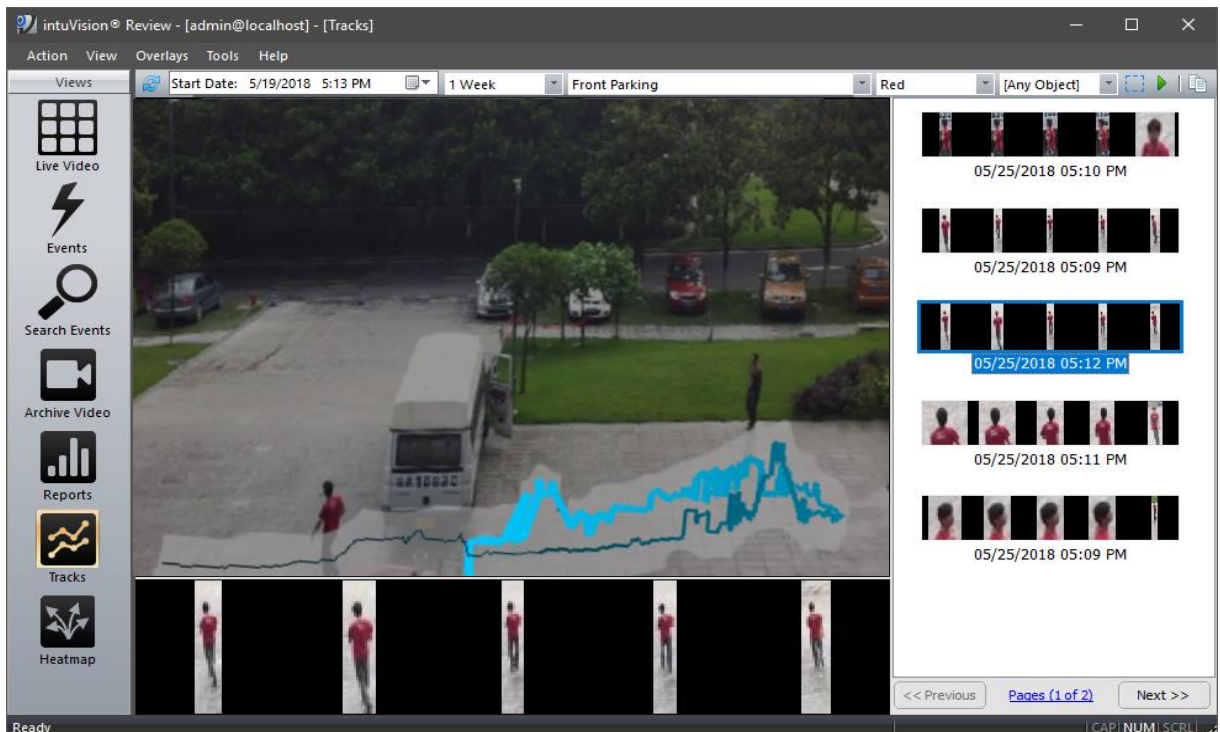
Real-time Alarms, Real World Deployments

intuVision VA detects threats in a timely fashion even in challenging of environments including camera jitter, rain and snow, low resolution or thermal video. Event rules can be applied for people or vehicles, used alone or combined for a wide range of requirements from basic perimeter intrusion to tailgate detection. intuVision VA Security module has been protecting buildings, factories, campuses, railroads, car dealerships, government offices, estates for over fifteen years in US and around the world.



People or Vehicle Search by Color

Following an incident, people and vehicles can be searched and retrieved by color. By selecting the cameras of interest and the time period, the object color search feature enables security personnel to quickly investigate a case, find matching objects and see the path they followed in the scene to gain insight to event specifics, such as a person with red shirt loitering in the back of a building before a break-in.





| Event Rule | Description |
|-----------------------------|--|
| Activity | Detect people or vehicular activity |
| Camera Tampering | Detect if a camera view is obscured, blocked or changed |
| Capacity | Detect when there are more people then allowed in an area |
| Crowd Density | Detect when a crowd gathers in a region of interest |
| Direction | Detect vehicles or people moving in a user specified direction |
| Enter/Exit | Detect vehicles or people as they enter or exit an area |
| Idle Vehicle | Detect a vehicle idling at a location or illegally parked |
| Intrusion | Detect when vehicles or people enter into a restricted area |
| Left Object | Detect if an object has been left behind unattended |
| Loitering | Detect people milling around |
| No Exit | Detect if a car has parked and no one has left the vehicle |
| Object Taken | Detect when a monitored object is removed from its place |
| Proximity | Detect if people, vehicles or other objects of interest are too close together |
| Random Selector | Count and select a percentage of people or vehicles for security inspections |
| Smoke/Fire Detection | Visually detect fire and smoke in camera views |
| Speeding | Detect speeding vehicles or fast moving people |
| Throughput | Detect vehicles or people crossing edges of a specified zone |