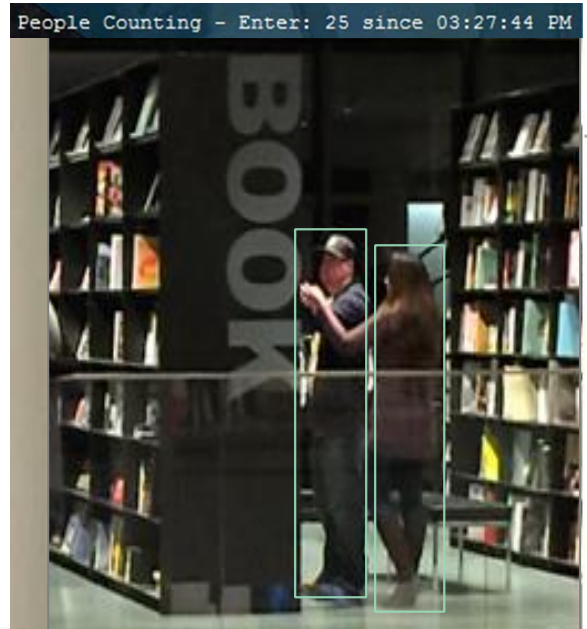




## Business Intelligence for Retail, Banking, Museums and more...

intuVision VA Retail module is designed to provide actionable intelligence for business operations. Used standalone or integrated with major VMS's to improve customer experience, manage wait times, collect customer traffic data, design and test store layouts, generate heat-maps, while preventing loss and increasing security by detecting objects removed or left behind, loitering people or employees leaving their post.



**intuVision VA Retail provides business intelligence and security with one easy-to-use application that meets a wide range of requirements**

Comprehensive event rules including intuVision's high accuracy people counting and flexibility in deployment options make intuVision VA Retail the perfect solution for retail stores large and small, shopping malls, banks, showrooms, museums and fitness centers.

intuVision VA is available for both Windows and Linux platforms. Please refer to intuVision VA datasheet for general product information.



in Benchmark 2020  
Top Retail Options





At-a-Glance Heatmaps

Foot traffic heatmaps can be generated for selected time intervals to see an overview of customer movement patterns in the camera scene. Individual customer paths can be selected and viewed for detailed customer behavior metrics.

People Search by Color

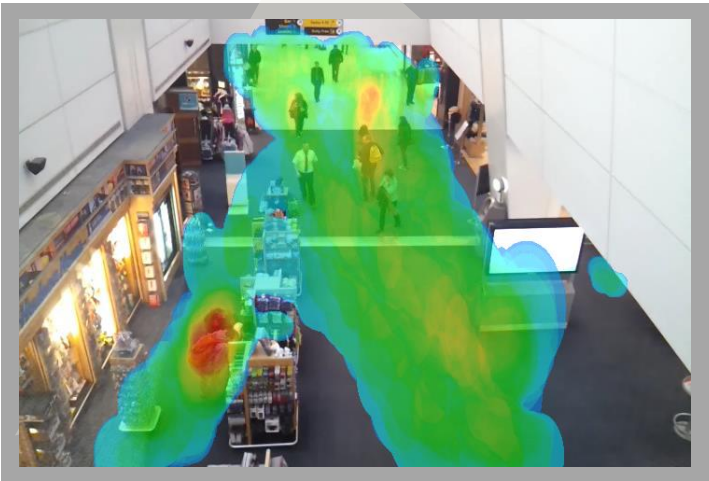
intuVision VA’s color based object search feature makes it easy to find people in camera views, while looking for an associate in an area by their uniform color or investigating a shoplifting incident.

People Counting & Reporting

Events and counts saved in intuVision VA can be reported via periodic email digests or accessed through intuVision WebAPI.

Reports are available in multiple formats including commonly used graphics options, text or Comma Separated Value (CSV) files ready to be imported in spreadsheets.

Counts for an area can be graphed for different time periods to compare month-to-month or week-to-week customer behavior.



From Me <anna@intuvisiontech.com>★

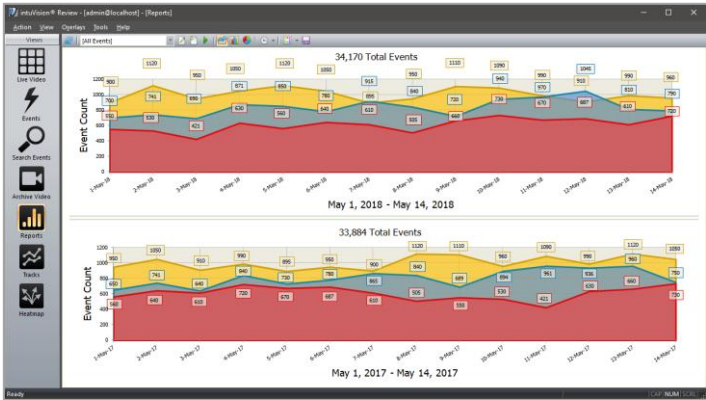
↩ Reply → Forward 📁 Archive

Subject **Daily Attendance Counts**

To Me <anna@intuvisiontech.com>★, marketing@intuvisiontech.com★

Total Events 05/04/2018 09:00 AM - 05/04/2018 06:00 PM: **1831**

		05/04/2018								
	Alarms	Avg	09 AM	10 AM	11 AM	12 PM	01 PM	02 PM	03 PM	04 PM
Door 1	574	-	34	64	55	74	66	50	72	69
Door 2	621		27	53	65	63	79	55	42	66
Door3	589		31	48	71	59	73	62	55	62





Event Rule	Description
<b>Activity</b>	Detect people or vehicular activity
<b>Capacity</b>	Detect when too many people are around a valuable display or waiting for help from support staff
<b>Coverage</b>	Monitor periods of activity/non-activity around counters or service desks to ensure staff are present
<b>Direction</b>	Detect people moving in a user specified direction
<b>Dwell Time</b>	Log the time spent by customers in various store areas, know where and for how long customers tend to linger
<b>Enter/Exit</b>	Detect people entering or exiting marked areas or people entering employee only areas
<b>Input / Output</b>	Detect people passing through a region to get queue service rate and the renege percentage
<b>Intrusion</b>	Detect when an object enters into a restricted area
<b>Left Object</b>	Detect if an object has been left behind unattended
<b>Loitering</b>	Detect people milling around
<b>Object Taken</b>	Detect when a monitored object is removed from its place
<b>People Counting</b>	Count the customers entering and exiting the facility, view results, graph or export as a CSV file.
<b>Queue Density</b>	Detect the fullness queue areas to ensure short wait times
<b>Throughput</b>	Detect people or other objects crossing user marked edges of a zone
<b>Smoke/Fire Detection</b>	Visually detect fire and smoke in camera views
<b>Tampering</b>	Detect if a camera view is obscured, blocked or changed