

intuVision VA Parking offers a low-cost solution for monitoring, analyzing and reporting vehicle parking data while providing safety and security monitoring in parking garages and parking lots.

Flexible deployment options makes intuVision VA an easy add-on to any parking system.

## Monitor vehicle activity, report spot availability and count vehicles as they enter and exit

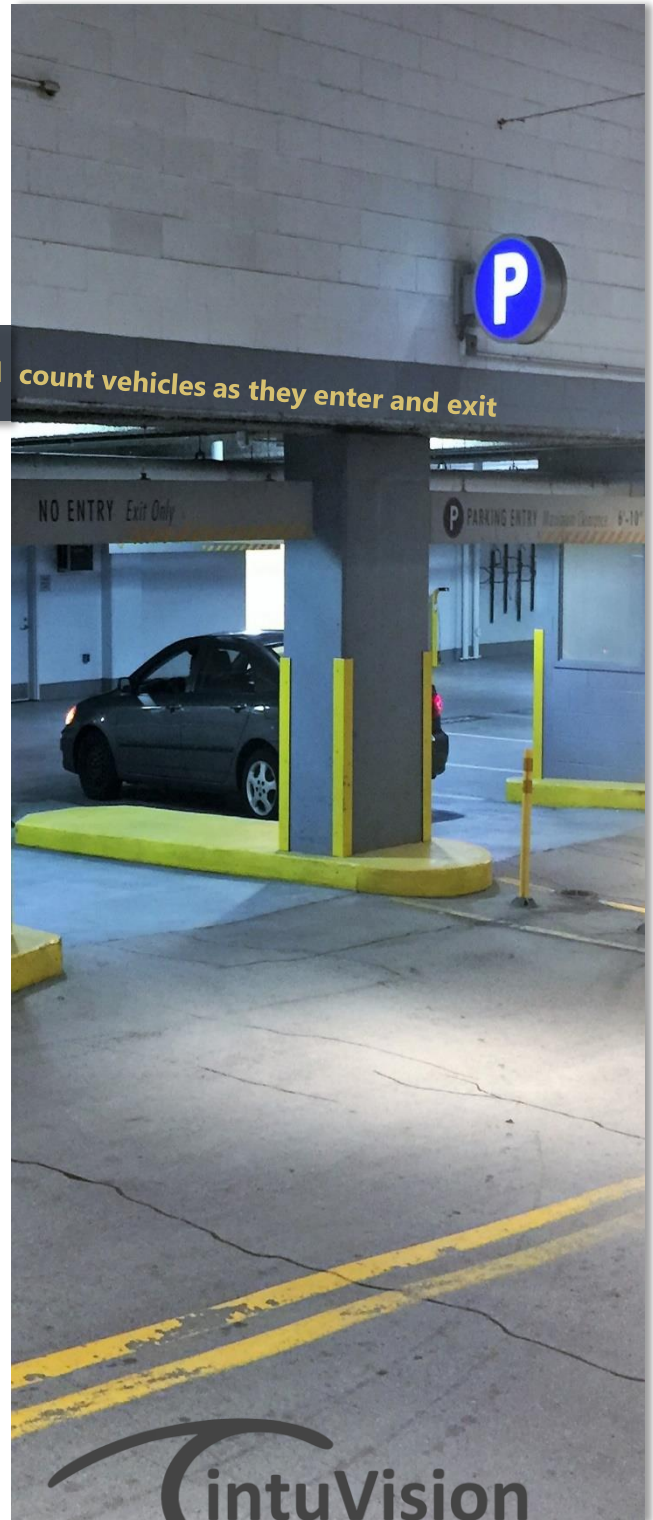
- Automated parking spot status
- Short term parking monitoring
- Overall occupancy
- Showing status on a parking lot plan
- Park duration display and graphs
- Custom API to report spot availability
- Reporting violations and safety threats
- Parking lot/garage time efficiency

intuVision VA's patented algorithms deliver high accuracy counts in both multi level garages or parking lots.

### Parking Area Safety

In addition to occupancy and availability reporting, intuVision VA Parking alerts personnel to safety violations in real time such as parking in the handicap spots or detection of smoke and fire in the parking area to prevent damage to people and property.

Please refer to intuVision VA datasheet for general system information, integrated VMS's and supported 3<sup>rd</sup> party devices.

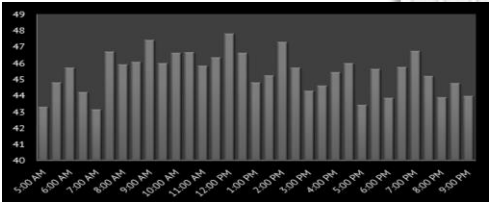




## Spot Availability

intuVision VA Parking provides park row templates that can be adjusted to fit the parking lot or street side demarcations to detect available and occupied spots. The status for each spot is updated in real-time for accurate reporting of the parking spot availability.

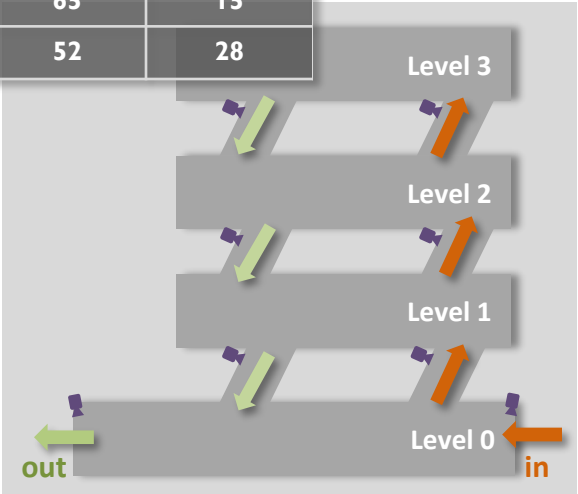
Spot availability status is shared with 3<sup>rd</sup> party display applications using the intuVision API. Additionally, spot status updates are displayed on a parking lot plan.



## Level-Based Garage Availability

intuVision VA Parking tracks overall occupancy and parking space availability for each level of a multi-level garage using entry/exit ramp cameras. Space availability for each level is updated in real time and this information can be sent to 3<sup>rd</sup> party systems including displays and mobile apps.

	Occupied	Available
Level 0	74	FULL
Level 1	71	9
Level 2	65	15
Level 3	52	28



# intuVision VA Feature Summary

**Unlimited event rules per license:** Largest set of event rules for Security, Retail, Traffic and Parking. Unlimited number of events per camera without additional processing overhead, event acknowledgement options.

**Compound Events:** Templates to combine events from multiple cameras and 3<sup>rd</sup> party triggers.

**Event Queries, Reports, Heatmaps:** based on time period, camera, and event rule, pie-chart, line, bar graphs, comparisons over multiple time periods. Motion and Dwell Heatmaps for people and vehicle traffic.

**Event Schedules:** Arm/Disarm, day/night schedules set on calendar and weekly time table.

**Standard Automatic Detections:** Camera Tampering, Smoke and Fire, Day/Night, Camera Video Loss, Video Quality Loss, Low Frame Rate, Ambient Light Change.

**Event Linking and Triggers:** Generic email and HTTP triggers. VMS specific action and PTZ triggers.

**Camera Event Setting Templates:** Configuration templates to set-up multiple cameras at once.

**Hot Swappable Settings :** Real-time tuning of all camera detection and tracking settings and analytics rules while the system is running.

**Monitoring View Options:** Support for multiple grid options, select camera details and floor plans.

**Marked-up RSTP Stream :** Option to display video analytics detection mark-ups as RTSP video output.

**Video / Alarm Management Systems:** exacqVision, Milestone, Hikvision HikCentral, Axis Camera Station, Cisco VSM, Immix Cloud-SureView.

**Architecture:** Scalable, distributed, multiple clients to remotely administer/monitor cameras, events, alarms.

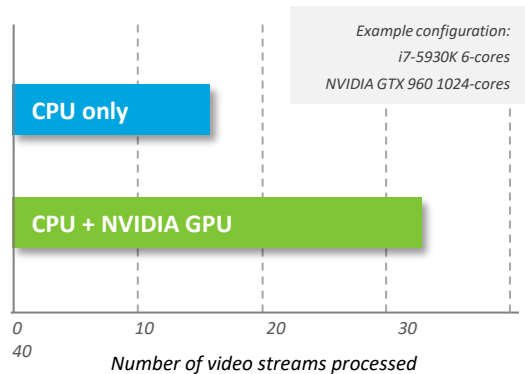
**Failover:** Option to configure a backup servers to take over in case of processing server failure.

**Back-up/Restore:** Database back-up option to restore system, cameras, event settings, and triggers.

**Operating Systems :** Windows, Windows Server, Linux (check for versions and distributions).

**User Management:** Support for user groups with different privileges, LDAP support for enterprise use.

**GPU Accelerated Processing:** Full support for NVIDIA compatible graphics cards for optimally accelerated video analytics doubling the performance capacity.



**Report Formats:** Lists, graphs, pdf's and CSV file output ready for 3<sup>rd</sup> party dashboards.

**intuVision API:** Fully functional API to access event alarm, metadata through standard calls.

**Archived Video Post-Processing:** 30x Faster than real-time, automatic sequential processing of video files.

**Supported Video: Sensors:** Color, Black & White, Thermal, Infrared, Wide Angle

*Resolutions:* CIF(320x240) to HD (1280x720)

*Min Frame Rate:* 8 fps

*Formats:* H.264, MPEG-4, MPEG-2, Motion JPEG, PTZ Controls for compatible cameras; analytics processing pauses while camera in motion

**Video File Input Formats :** ASF, AVI, MP4, MPG, WMV

**Network Protocols:** DNS, HTTP, ONVIF, RTSP, RTP, SMTP, TCP/IP, UDP, ZeroConf

**OEM Options:** White labeling of all intuVision VA applications and full featured C-based SDK available in Windows and Linux.

