



BRIEFCAM + XPROTECT STARTER KIT

SOLUTION OVERVIEW

BriefCam  **milestone**

The seamless integration and powerful combination of industry leading software solutions, BriefCam's Video Content Analytics Platform and Milestone's XProtect Video Management System provides an out of the box, best-in-class video management and video analytics solution, that transforms video into actionable intelligence.

The tightly coupled appliance-based solution enables low-touch deployment; five-steps in five-minutes, and rapid time-to-value as a result of a pre-configured and certified hardware appliance, powerful and intuitive administration tools, and seamless integration with the XProtect server and client.

01:43

01:27

18:35

13:45

03:47

02:39

01:43

15:13

10:21

05:33

12:15

02:39

21:19

16:44

10:21

16:44

19:20

03:47

01:43

ACCELERATE INVESTIGATIONS



REVIEW

CASE MANAGEMENT: Organize all video assets of an investigation in a single container, bookmark objects of interest, and summarize case findings (including all relevant exhibits) in an exportable report, while dynamically collaborating on cases with other users.

VIDEO SYNOPSIS®: Simultaneously present objects that have appeared at different times within the video. The result is a dramatically shorter video segment that fully preserves the viewer's ability to analyze the scene, enabling the review of hours of video in minutes and sometimes seconds.

MULTI-CAMERA SEARCH: Advanced multi-camera search powerfully identifies men, women, children and vehicles of interest with speed and precision, using face recognition, appearance similarity, apparel, color, size, speed, path, direction, dwell time and illumination change filters.

FACE RECOGNITION: Accurate face recognition rapidly pinpoints people of interest using digital images extracted from the video or from external sources.

APPEARANCE SIMILARITY: Instantly locate people, vehicles, and other items of interest by searching for objects with similar attributes.

VISUAL LAYERS: Create visual analytics for activity, dwell time, common paths and background changes.

FILTER TOLERANCE: Adjust tolerance levels to refine search results for class, attributes, color, dwell time, direction, area, path, face recognition and appearance similarity.

DENSITY & SPEED CONTROL: Increase or decrease the number and speed of events shown at once.

SORT CONTROL: View events by relevance or by order of occurrence and easily zoom in on items of interest.

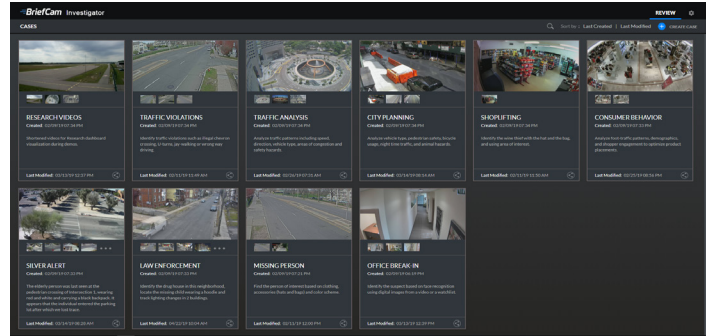
APPLIANCE SPECIFICATION

- 1U Rackmount Shallow Depth
- Dual 550W Power Supply
- Intel® Core® i7-8700
- 64GB RAM, 512GB SSD & 8TB HDD
- Single NVIDIA Quadro RTX4000 GPU
- 5 Years on-site warranty (eligible countries)

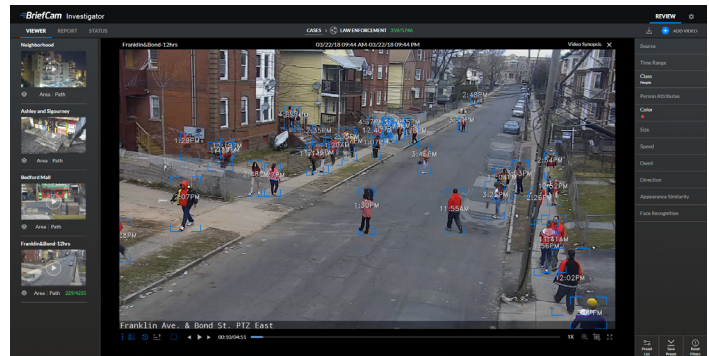
Certified Video Processing Capabilities: 566 hours/day of 1080p 15fps, Default Activity Video

EXPANSION

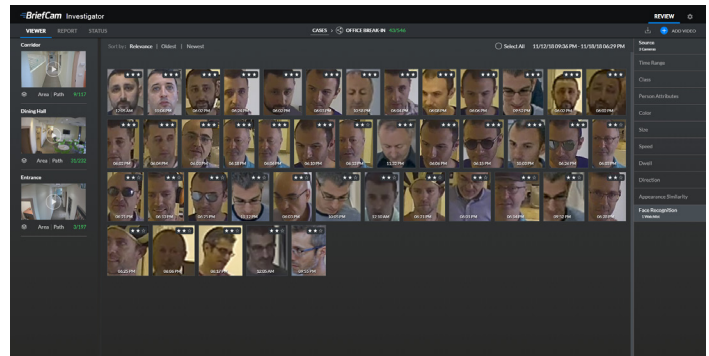
- Additional Channels can be added in packs of 10, plus 1st year maintenance.
- 8TB storage is included with the Appliance, and storage expansion can be added as needed up to 24TB



REVIEW: Case Management with Collaboration



REVIEW: BriefCam's VIDEO SYNOPSIS with Search



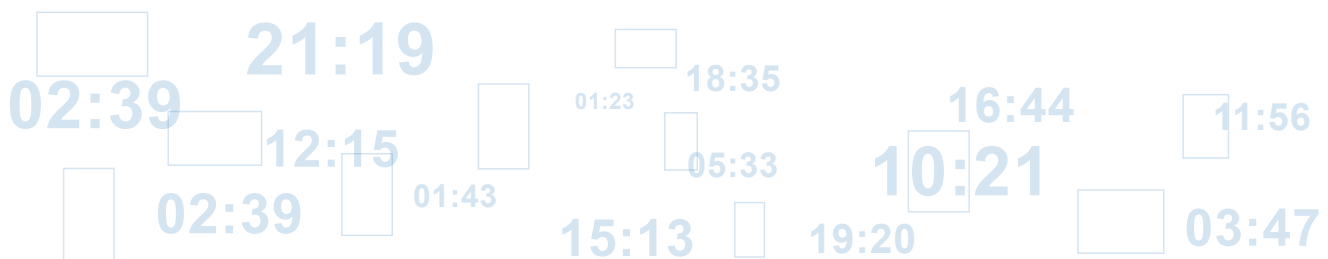
REVIEW: Face Recognition with Watchlist

Software	BriefCam RapidReview
Video Input	Milestone XProtect Only
# of Included Concurrent Users	2
# of Included Camera Streams	50
Max # of Camera Streams	200
Annual Maintenance	1st Year
SW Updates and Technical Support	Yes
Training	LMS-based
Appliance	Included

*Additional concurrent users and additional channels up to 200 can be purchased

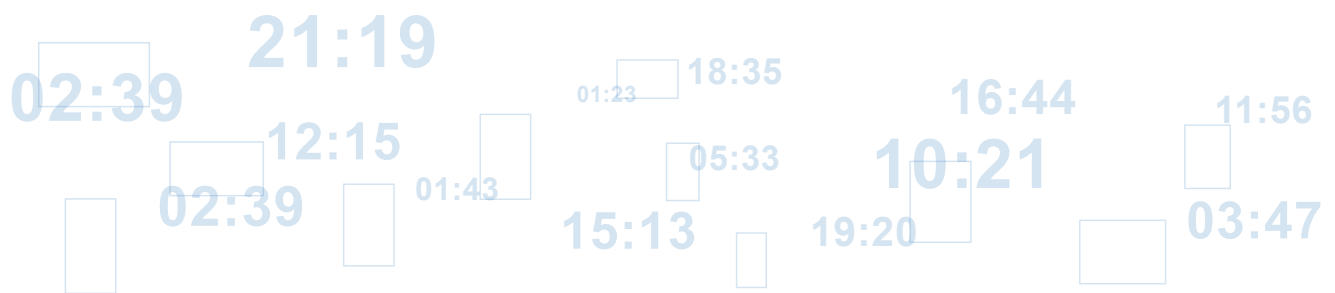
SEARCH FILTERS

SOURCE	Limit objects to specific cameras or files
TIME RANGE	Limit the search criteria to specific time ranges
CLASS	<p>Class Categories: People, Two-Wheeled Vehicles, Other Vehicles, and Animals</p> <p>People: Man, Woman, Child</p> <p>Two-Wheeled Vehicle: Bicycle and Motorcycle</p> <p>Other Vehicles: Car, Pickup, Van, Truck, Bus, Train, Airplane, and Boat</p> <p>Illumination Changes: Lights On, Lights Off</p> <p>Animals</p>
ATTRIBUTES	<p>Lower Wear: Long, Short, and by Color</p> <p>Upper Wear: Long Sleeves, Short Sleeves, and by Color</p> <p>Hats: No Hat, Hat</p> <p>Bags: No Bag, Backpacks, Handheld Bags</p>
COLOR	Identify objects according to any combination of Brown, Red, Orange, Yellow, Green, Lime, Cyan, Purple, Pink, White, Grey, and Black
FACE RECOGNITION	<p>View All Faces: View all faces that were detected in a case</p> <p>Search by Face: View all faces that were detected in a case and search by face using external images, or images from video</p>
APPEARANCE SIMILARITY	Identify people and vehicles with similar attributes
DIRECTION	Select objects according to their direction as visually seen in the video
SIZE	Select objects based on their actual (real-life) size from a histogram of sizes relevant to a specific case
PATH	Identify objects traveling along one or more user-defined paths
AREA	Identify objects included or excluded within one or more user-defined 3- or 4-sided polygon areas
SPEED	Select objects based on their actual speed from a histogram of speeds relevant to a specific case
DWELL	Select objects dwelling for longer than a certain period in a scene



TECHNICAL SPECIFICATIONS

SUPPORTED RESOLUTION	Minimum CIF, Maximum 4K
SUPPORTED FRAME RATE (FPS)	8-30 frames per second
SUPPORTED VIDEO FILE FORMATS	.AVI, .MKV, .MPEG4, .MOV, .WMV, .DVR, .ASF, .RT4, .DIVX, .264, .GE5, .TS, .3GP, .XBA (single stream and multi-stream), .MP4, .FLV
SUPPORTED CODECS	H.264, H.265/HEVC, MPEG-4, H.263 (H.265 is supported for selected VMSs and cameras)
FILE-BASED INGESTION	Multi-file videos or single file videos
SINGLE SIGN-ON (SSO)	Microsoft Microsoft Active Directory, both LDAP and LDAPS, including user groups (OU support), and the SAML protocol
SUPPORTED CAMERA TYPES	Fixed Cameras
FACE RECOGNITION	Minimum Face Size: 24x24 pixels
SUPPORTED LANGUAGES	Brazilian Portuguese, Chinese Simplified, Chinese Traditional, Danish, Dutch, English, Finnish, French, German, Japanese, Korean, Latin Spanish, Turkish, Vietnamese
SUPPORTED BROWSERS	Google Chrome Desktop and Firefox



ABOUT BRIEFCAM

BriefCam is the industry's leading provider of Deep Learning and VIDEO SYNOPSIS® solutions for rapid video review and search, face recognition, real-time alerting and quantitative video insights. By transforming raw video into actionable intelligence, BriefCam dramatically shortens the time-to-target for security threats, while increasing safety and optimizing operations. BriefCam's award-winning products are deployed by law enforcement and public safety organizations, government and transportation agencies, major enterprises, healthcare and educational institutions, and local communities worldwide. For more information about transforming video surveillance into actionable intelligence, visit www.briefcam.com.