

6 CH 4K VIDEO WALL CONTROLLER

VIEWSPAN 6 Pro®

Application | VIEWSPAN 6 Pro® is designed for high resolution, video wall installations



VIEWSPAN 6 Pro® is
a high performance
video wall controller
for decode and
display

All VIEWSPAN® devices incorporate VIEWSPAN Nexus® software - a highly optimised video display processing system delivering enterprise-level performance for every application.

- | 6 x 4K display outputs generating a single display canvas
- | Optional 12 x HD display canvas (with 4K splitters)
- | Decoding and display of up to 96 x 30 FPS video streams
- | High density decoding of H.264/265 and MJPEG
- | Streams may be stretched/positioned anywhere on the video wall
- | Compatible with AV capture, VIEWCAST, VNC, RDP, web & more
- | Accelerated fisheye camera display de-warping

VIEWSPAN 6 Pro® is a powerful video display controller for large-scale, high resolution video wall display installations

VIEWSPAN 6 Pro can be used with optional 4K splitters to drive up to 12 full HD screens as a single canvas.



Configuration and Control via web browser interface

Display Controllers

The VIEWSPAN® range of video wall controllers are designed especially for video surveillance applications. They have been developed to meet the performance and reliability requirements of high-security control rooms. VIEWSPAN 6 Pro® is a 1U, rackmounted unit, with 6 display outputs. Each output can drive a 4K UHD monitor at full resolution (3840 x 2160).

Built as enterprise-class systems, VIEWSPAN appliances provide extended lifetime, durability, and higher performance backed by Veracity's expert technical support teams.

Optimised Software

All VIEWSPAN systems incorporate highly optimised VIEWSPAN Nexus® video display processing software. When this is combined with the powerful GPU and CPU hardware inside VIEWSPAN 6 Pro, it delivers incredible performance, decoding up to 72 full HD IP video streams at 30 FPS producing super-smooth video across the 6 display outputs.

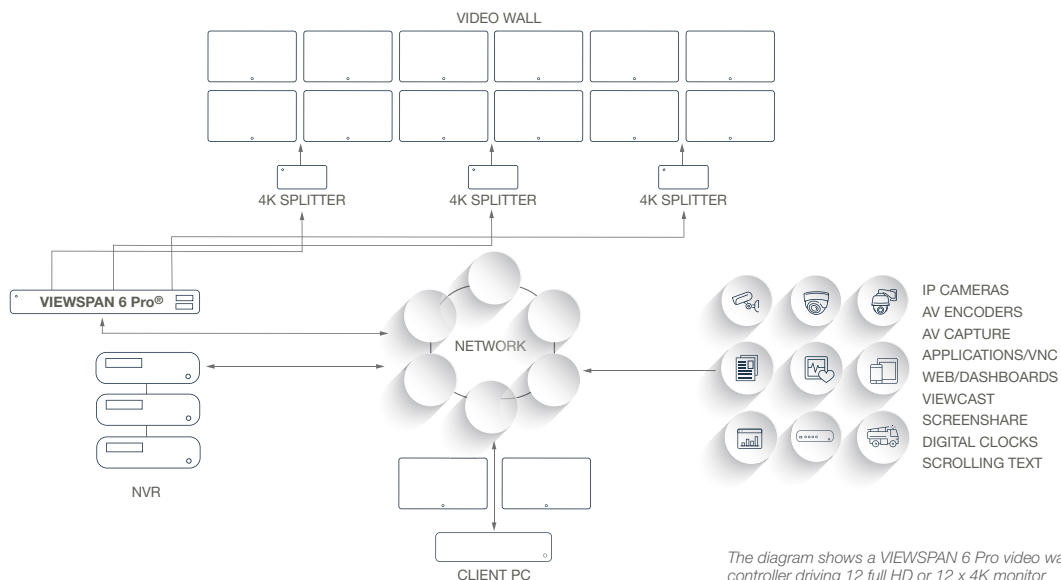
VIEWSPAN includes GPU-accelerated fisheye camera lens de-warping capability, for corrected display of live or recorded video. See the table on the next page for full decode performance at various stream resolutions.

Setup & Configuration

A simple web-browser interface is used to configure all VIEWSPAN systems, allowing network setup, display arrangement and VMS/NVR integration settings. VIEWSPAN can be directly integrated with the VMS or integrated security management system, or it can be used as an accelerator platform for the VMS display, controlling VIEWSPANs on a client through the browser interface.

Multiple VIEWSPAN units of various types can be configured to control large video walls with many monitors for large CCTV control rooms and security operations centres.

VIEWSPAN 6 Pro® APPLICATION DIAGRAM

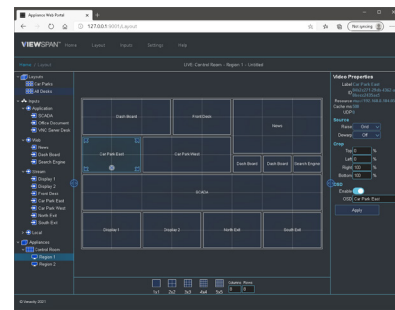


The diagram shows a VIEWSPAN 6 Pro video wall controller driving 12 full HD or 12 x 4K monitor displays. Displayed video streams may come from any source, including the NVR, cameras or even the Client PC. Multiple streams can be displayed on each monitor (matrix view).



Panoramic fisheye camera lens de-warping is performed on the GPU for optimum performance

VIEWSPAN 6 Pro is compatible with AV capture and encoding systems, web page displays and our VIEWCAST desktop display streaming utility



Multiple display monitor layouts can be defined, saved and selected under operator control or triggered by alarms.

Video Stream Decoding

VIEWSPAN® devices can decode almost any video stream format, with the most common being H.264 and H.265 for surveillance applications, at any resolution and frame rate. A higher number of streams can be decoded and displayed simultaneously if the resolution and/or frame rate is lower. For live video display applications, it is preferable to maintain a high frame rate (25 or 30 FPS) for smooth video.

Optimised Resolution for Display

VIEWSPAN 6 Pro can display multiple 8-megapixel (4K) IP camera streams at full resolution and frame rate on 4K

displays. It can also display 4 full HD streams per screen (24 in total) without loss of resolution or quality. Any supported signal format can be cropped, scaled and displayed anywhere on the video wall canvas. Capable of up processing up to 72 simultaneous full HD video streams, the 6 Pro unit can smoothly drive a 3 x 3 matrix display of 9 video streams on each of 6 screens without stutter or frame drop.

Typical display monitors will be full HD resolution and VIEWSPAN 6 Pro can drive up to 12 HD monitors using optional 4K-to-4xHD splitters supplied by Veracity.

VIEWSPAN® Range

Veracity provides a range of VIEWSPAN systems to suit different requirements. VIEWSPAN Solo is a very compact, low cost, single or dual full HD output unit able to decode up to 25 full HD streams. Its small size and low power makes VIEWSPAN Solo ideal for remote or local auxiliary monitor displays. VIEWSPAN 8 Pro and 12 Pro are even more powerful 2U devices with 8 and 12 display outputs respectively. Each can handle more than 100 simultaneous full HD video streams. All VIEWSPAN® models are inter-compatible and are managed through a single browser interface.

VIEWSPAN Solo®, VIEWSPAN 6 Pro®, VIEWSPAN 8 Pro® and VIEWSPAN 12 Pro® Performance Table

PERFORMANCE TABLE		MAXIMUM NUMBER OF SIMULTANEOUS DECODE CHANNELS AT 30 FPS			
IP VIDEO INPUT (RESOLUTION)	IP VIDEO INPUT (REFERENCE)	VIEWSPAN Solo®	VIEWSPAN 6 Pro®	VIEWSPAN 8 Pro®	VIEWSPAN 12 Pro®
352	CIF	66 ch	96 ch	>100 ch	>100 ch
720 x 480 or 576	NTSC or PAL D1	48 ch	94 ch	>100 ch	>100 ch
1280 x 720	720p HD	36 ch	88 ch	>100 ch	>100 ch
1920 x 1080	1080p Full HD	25 ch	72 ch	>100 ch	>100 ch
3480 x 2160	4K UHD	6 ch	20 ch	30 ch	40 ch

The table shows the number of video input channels which can be simultaneously decoded at a given input resolution. However, the displayed resolution of each individual channel will be dictated by the

display monitor resolution, layout pattern and number of screens available. For example, VIEWSPAN 6 Pro can drive full HD or 4K monitors. When displaying multiple full HD streams on an HD

monitor, or multiple 4K streams on any monitor, the input channels must be scaled down to fit the screen area resolution defined for those channels.

TECHNICAL SPECIFICATION

VIEWSPAN 6 Pro®

POWER INPUT	
Input Voltage	100V to 240V AC, 50/60Hz
Power Supply	550W dual-redundant
Power Consumption	250W typical, 350W under full load
SYSTEM	
Hardware	1U Rackmount enterprise server system
Processors CPU	CPU: Intel; GPU: Nvidia
Operating System	Windows 10 Pro, 64bit pre-configured for video wall applications
	OS on mirrored 2.5" SSDs
Codec Support	GPU: H.264, H.265, MPEG2, MJPEG, VC8 CPU: All ffmpeg codecs – see www.ffmpeg.org/general.html#Video-Codecs
PERFORMANCE	
Decode Channels	All at 30 FPS (higher channel counts available with lower frame rates) 94 at D1 resolution 88 at 720p resolution 72 at full HD resolution 20 at 4K UHD resolution
Stretch Video	Yes, across up to 6 screens (or across 12 screens with splitters)
De-warp	Yes
NETWORK	
Ethernet	1 x 10 Gigabit Ethernet interface and 1 x Gigabit Ethernet interface
CONNECTIONS	
Power	2 x IEC 13
Ethernet	2 x RJ45
USB	2 x USB 3.1 A connections and 1 x USB 3.1 C connection
Display	3 x DisplayPort 1.2 and 3 x USB 3.1 C connection
PHYSICAL/ENVIRONMENTAL	
Form Factor	1U Rackmount case with rails
Case Dimensions	W 482mm x H 43mm x D 459mm [18.98" x 1.686" x 23.19"]
Weight	8.74Kg [19.27lbs]
Operating Temperature	0°C to +35°C [32°F to +95°F]
Storage Temperature	-20°C to +70°C [-4°F to +158°F]
Relative Humidity	85% non-condensing
Safety & Compliance	CE, FCC Class A, UKCA, UL, TÜV, ROHS and WEEE
PRODUCT CODES	
VSPAN-6-PRO-UK	VIEWSPAN 6 Pro video wall controller, 6 outputs & UK power cable
VSPAN-6-PRO-EU	VIEWSPAN 6 Pro video wall controller, 6 outputs & EU power cable
VSPAN-6-PRO-US	VIEWSPAN 6 Pro video wall controller, 6 outputs & US power cable
VSPAN-8-PRO-UK	VIEWSPAN 8 video wall controller, 8 outputs & UK power cable
VSPAN-8-PRO-EU	VIEWSPAN 8 video wall controller, 8 outputs & EU power cable
VSPAN-8-PRO-US	VIEWSPAN 8 video wall controller, 8 outputs & EU power cable
VSPAN-12-PRO-UK	VIEWSPAN 12 video wall controller, 12 outputs & UK power cable
VSPAN-12-PRO-EU	VIEWSPAN 12 video wall controller, 12 outputs & UK power cable
VSPAN-12-PRO-US	VIEWSPAN 12 video wall controller, 12 outputs & UK power cable
VSPAN-SOLO-UK	VIEWSPAN Solo video wall controller, 1 or 2 outputs & UK PSU
VSPAN-SOLO-EU	VIEWSPAN Solo video wall controller, 1 or 2 outputs & EU PSU
VSPAN-SOLO-US	VIEWSPAN Solo video wall controller, 1 or 2 outputs & US PSU
VW-CAST-KEY	VIEWCAST desktop screen streamer software licence key



Veracity HQ
Prestwick International Aerospace Park
4 Dow Road
Prestwick
UK
KA9 2TU
Tel +44 (0) 1292 264967
www.veracityglobal.com
sales@veracityglobal.com

© Veracity UK Ltd 2022. All rights reserved. DV1.2EN
Under no circumstances should this document be reproduced,
distributed or changed, partially or wholly, without written,
formal authorisation from Veracity UK Ltd.
VIEWSPAN® is a registered trademark of Veracity UK Ltd.

See www.veracityglobal.com website
for country and region specific contacts.