

Transition Networks / Milestone XProtect Plugin

Users Manual

Plugin Consists of



- Transition Networks Milestone XProtect integration consists of a plugin for the XProtect client.
- The plugin adds a tab to the XProtect client which allows users to:
 - Discover Transition Networks Smart Etherswitches in the network.
 - List an inventory of discovered Transition Networks Smart Etherswitches
 - One-click access to Transition Networks Smart Etherswitches.
 - Single pane of glass view of solution

Installation

Installation



STEP 1

Take the (3) files attached and place them in the folder "SC_Transition" then put this folder into the path:

C:\Program Files\Milestone\XProtect Smart Client\MIPPlugins\

When done, this path should exist and have the 4 files in it:

C:\Program Files\Milestone\XProtect Smart Client\MIPPlugins\SC_Transition\

STEP 2

Open windows explorer and navigate to the MIPPlugins directory.

C:\Program Files\Milestone\Xprotect Smart Client\MIPPlugins\SC_Transition)

- Right-click the DLL
- Then select Properties
- Uncheck the "Unblock" button if it is present

STEP 3

After Milestone is installed, you need to perform a change on the REGEDIT to force Microsoft to use IE11 for browser emulation:

- Run REGEDIT
- Navigate to:
Computer\HKEY_LOCAL_MACHINE\SOFTWARE\Microsoft\Internet Explorer\Main\FeatureControl\FEATURE_BROWSER_EMULATION
- Right-click a blank space and select New -> DWORD (32-bit value)
- Name it "Client.exe" (without the quotes)
- Double-click the Client.exe key
- Select the Decimal radio button
- Change the Value data to 11000
- Click OK and make sure the data looks like this: Client.exe REG_DWORD x00002af8 (11000)
- Reboot PC

STEP 4

Run Milestone, using your credentials to login, and you should see the Transition tab in the Milestone XProtect Client

Setup / Discovery

Setup/Discovery



- Start the Milestone Smart Client by double-clicking on it.
- The initial screen will have the Transition Networks Tab on the top.
- In the Network Items there will be a Devices Tree. “Devices” will always be the starting point of the tree and can’t be deleted.

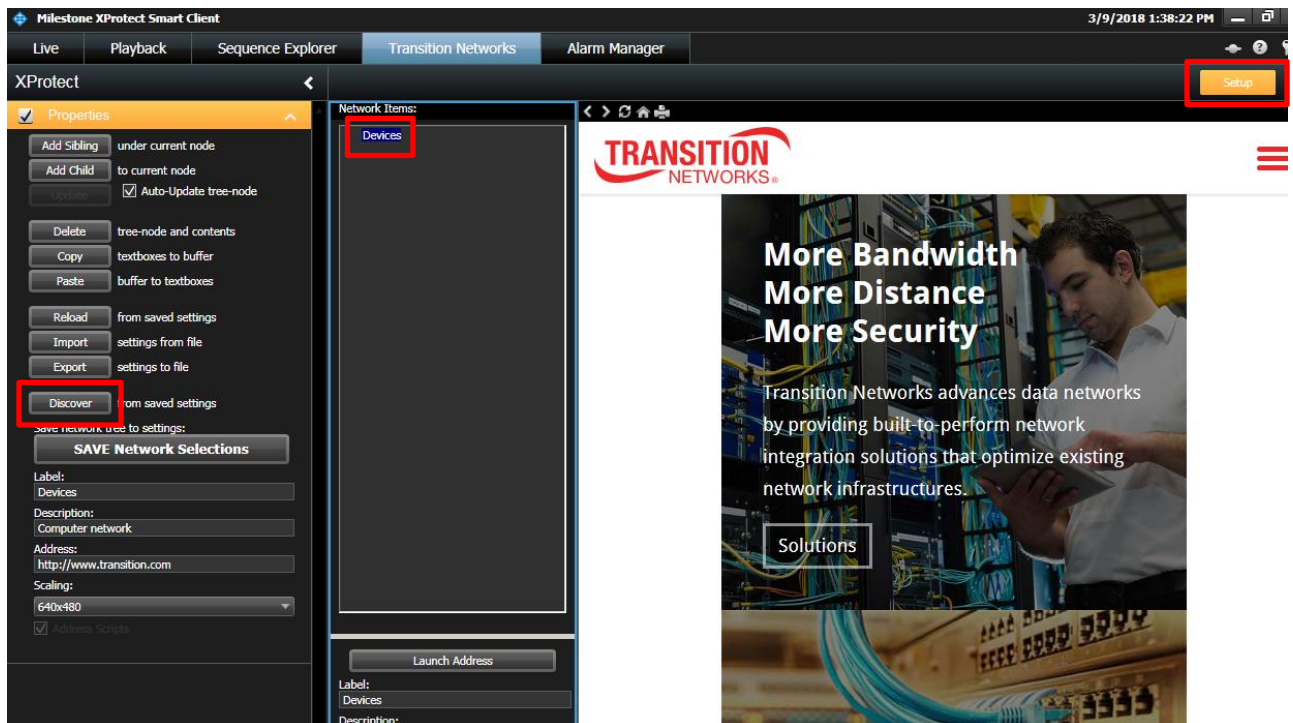
The screenshot shows the Milestone XProtect Smart Client interface. The top navigation bar includes tabs for Live, Playback, Sequence Explorer, Transition Networks (highlighted with a red box), and Alarm Manager. Below the navigation bar, the Network Items section contains a tree view with a 'Devices' item (also highlighted with a red box). The main content area features the Transition Networks logo and a promotional banner with the text: 'More Bandwidth, More Distance, More Security'. The banner includes a 'Solutions' button and a description of Transition Networks' services. Below the banner, there is a 'PRODUCTS' section with the text: 'Network connectivity. Any network. Any application. Any environment.'

Setup/Discovery



Set Up Screen for Discovery of Switches

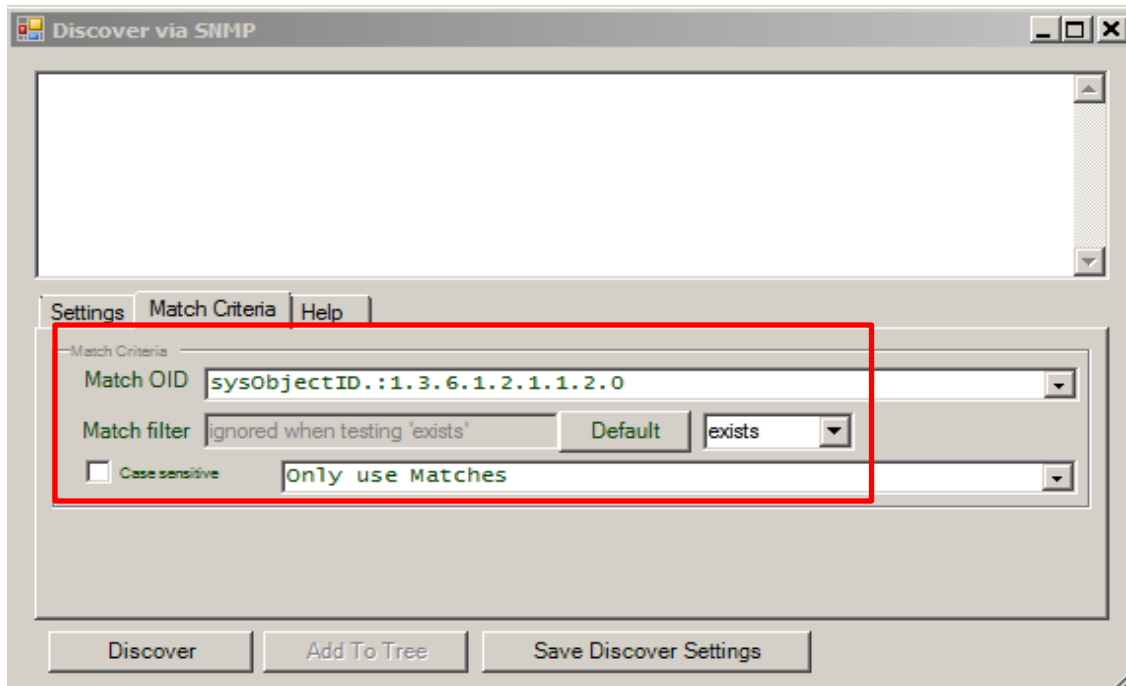
- To discover new devices and place them in the device tree, Click on the Smart Client Setup button. Click on Devices to highlight, then Click on the Discover Button.



Setup/Discovery

Discovery of Switches

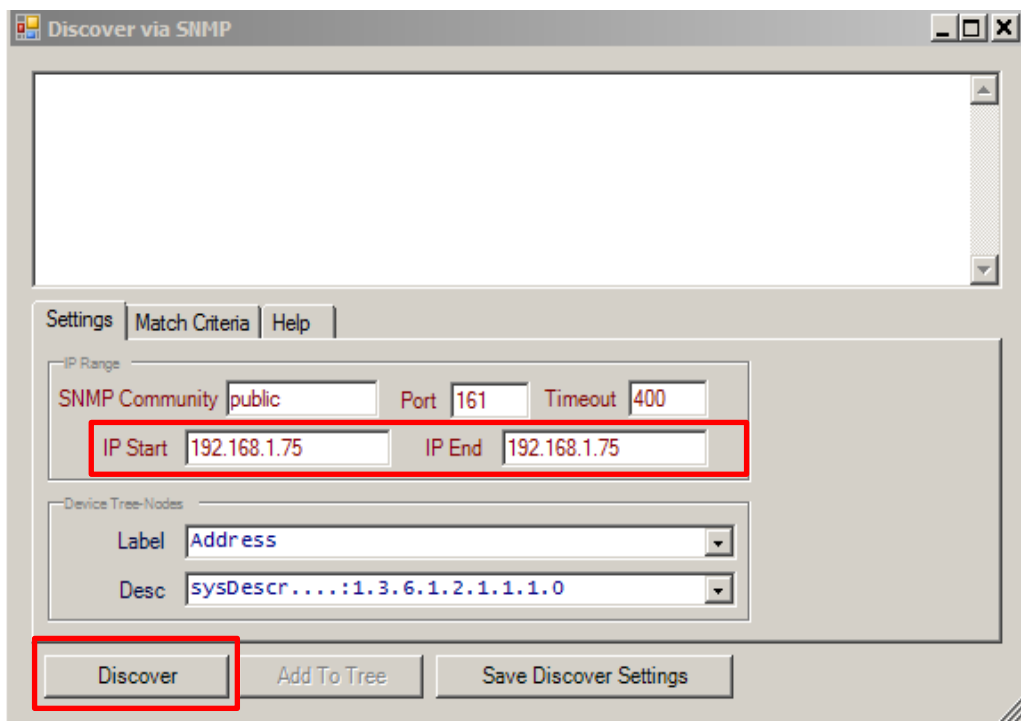
- Make sure that the configuration parameters are set as below in the Match Criteria.



Setup/Discovery

Discovery of Switches

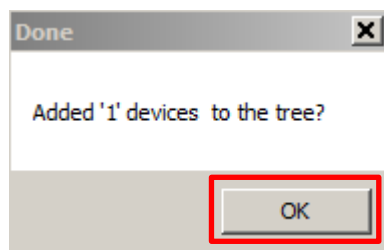
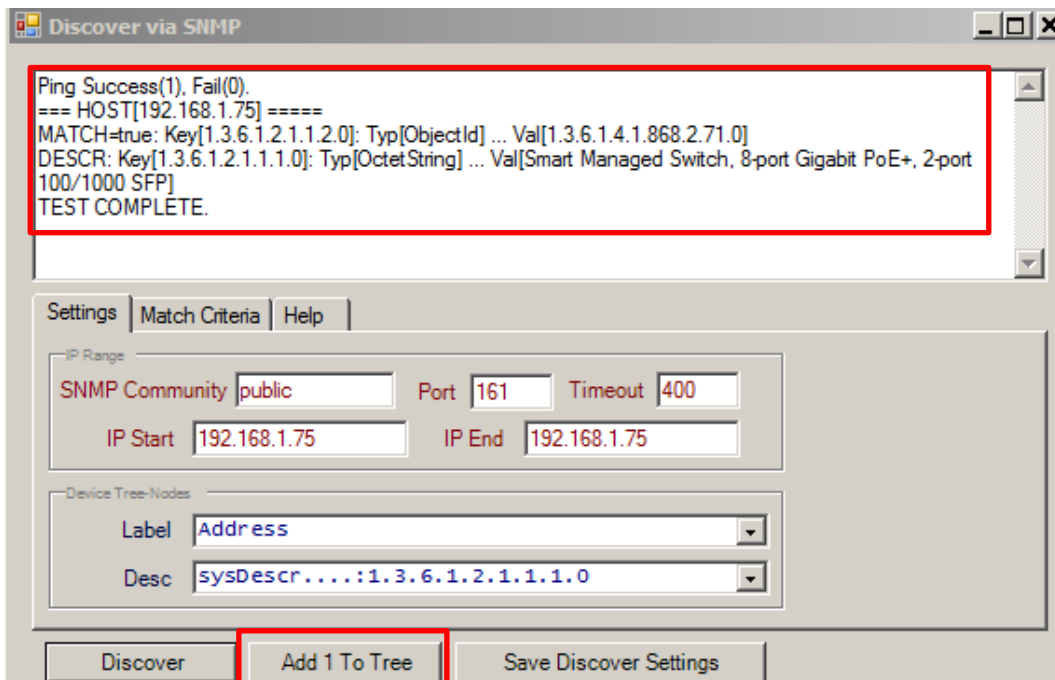
- You can discover a range of IP Addresses or discover one IP Address at a time.
- Enter the IP Address that you want to discover and click on the “Discover” button.



Setup/Discovery

Discovery of Switches

- After clicking on the Discover button the Etherswitch is discovered
- Add the device to the tree by clicking the “Add 1 to Tree” Button.
- Click “OK”

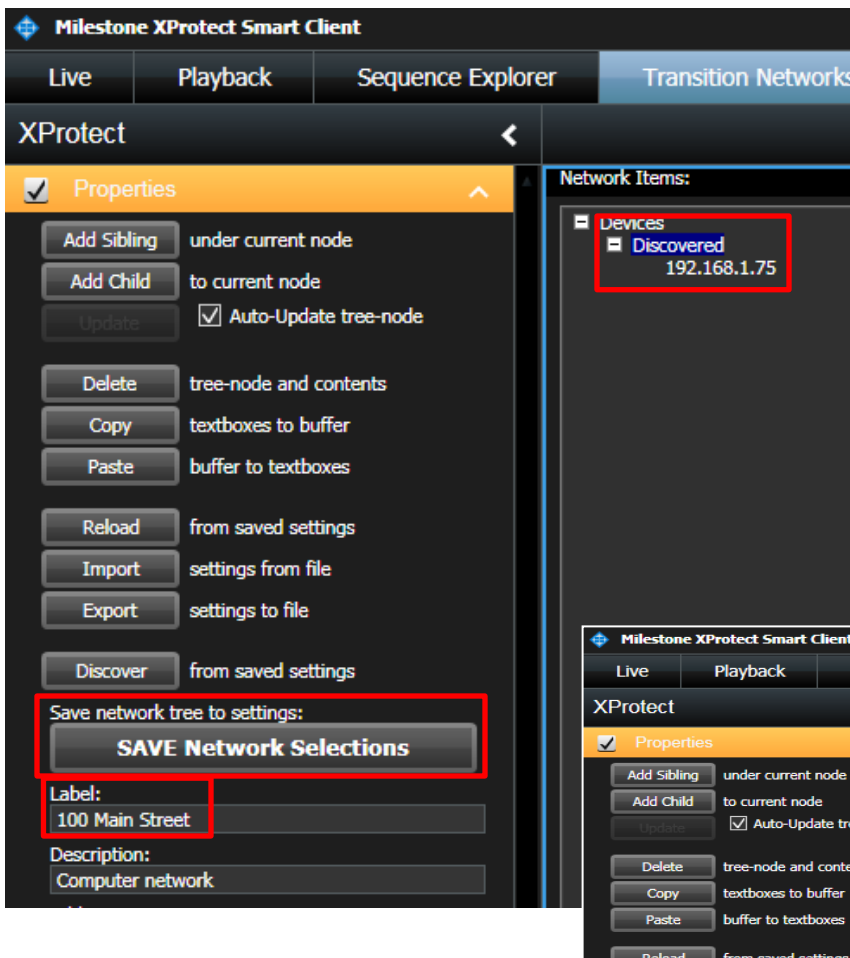


Setup/Discovery



Discovery of Switches

- In the Discovered Tree entry, you can expand to the device IP Address that you had discovered. You can change the label to a building location or a floor location.
 - Click on Discovered Label to highlight
 - Under the device Label on the left menu, type in new name.
 - Click SAVE Network Selections

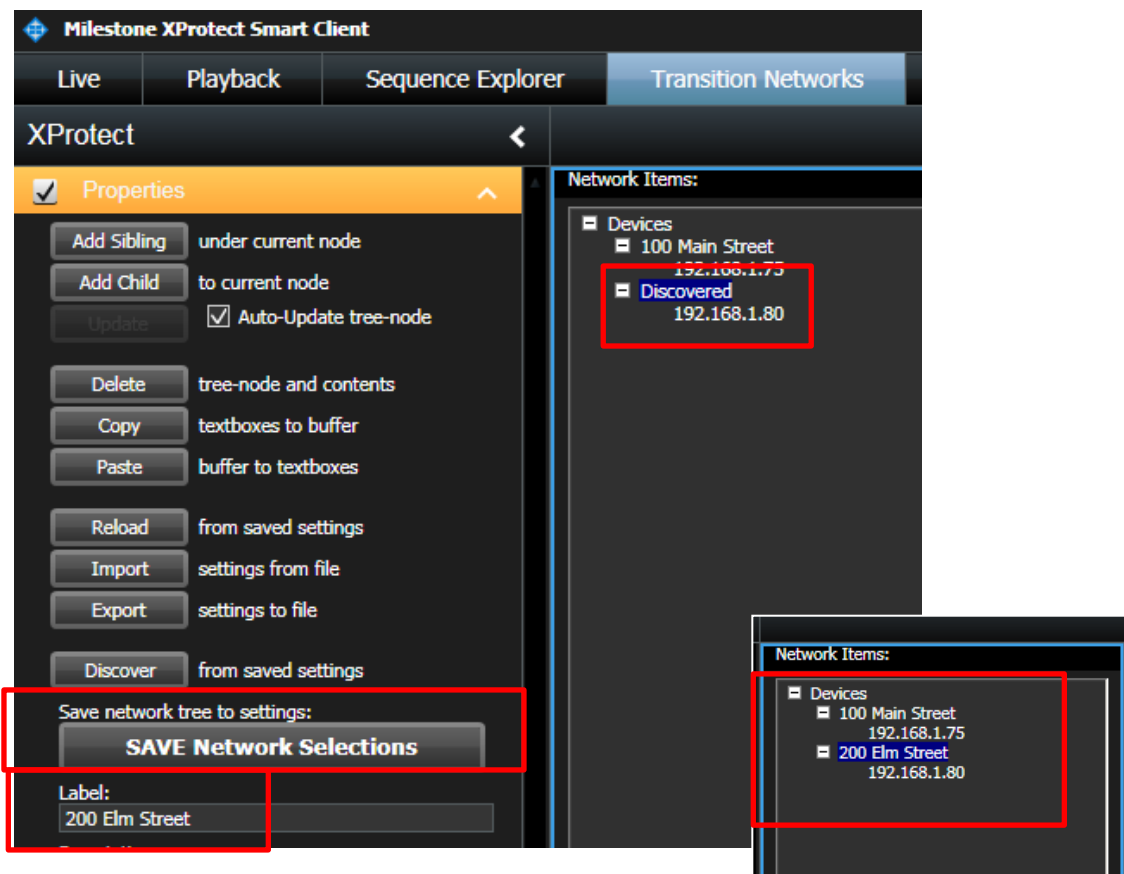


Setup/Discovery



Discover Additional Switches

- To discover another switch to be labeled in a different location, follow the previous steps of Discovery. In the Discovered Tree entry, you can expand to the device IP Address that you had discovered.
- You can change the label to a building location or a floor location.
 - Click on Discovered Label to highlight
 - Under the device Label on the left menu, type in new name.
 - Click SAVE Network Selections.
 - Exit the Setup Menu.



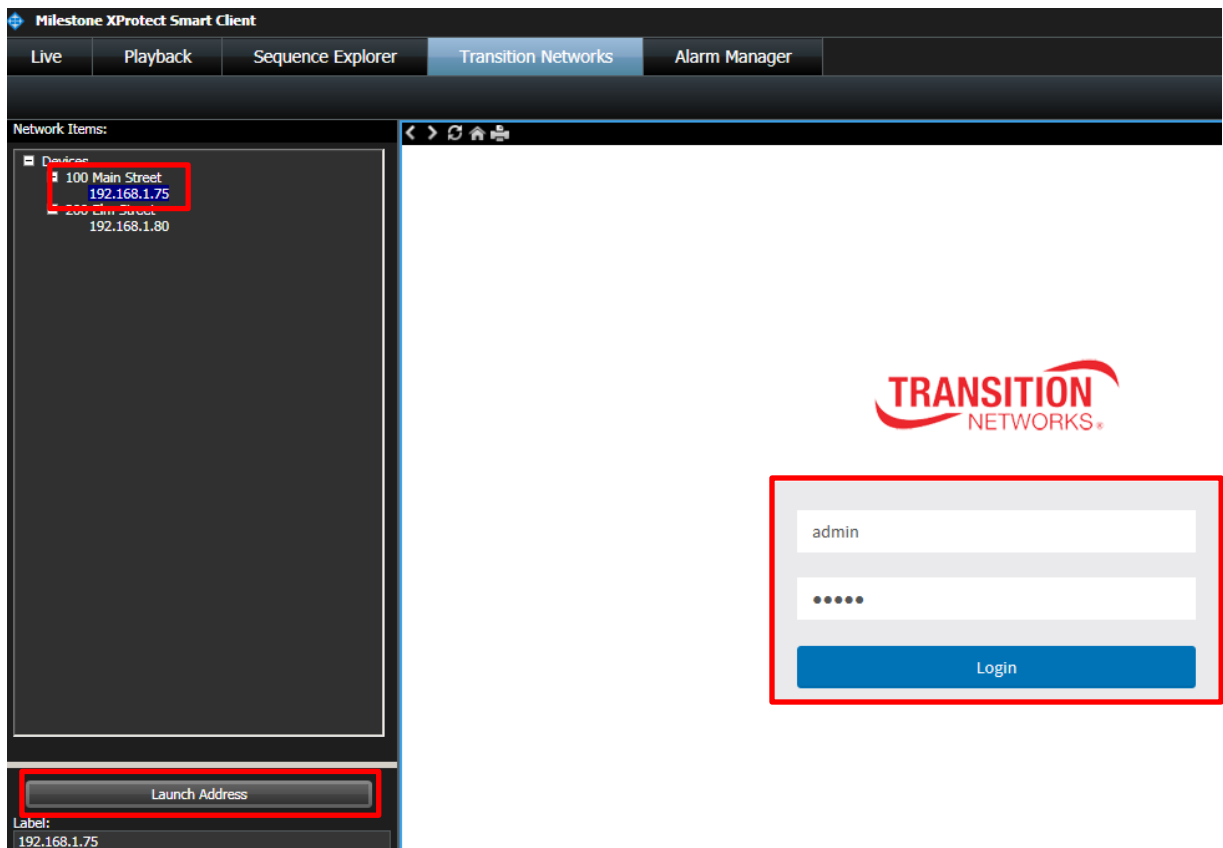
Accessing Switches

Accessing Switch



Accessing the Smart Managed Switches

- To access the TN Smart Managed Switches
 - Click on the IP Address and Click on the Launch Address Button. MS Smart Client will connect to the switch and show the login of the GUI interface.
 - Enter the login and you will have full functionality of the switch. You can expand and contract the screen using the Bars at the left of the screen menu.



Accessing Switch



- Enter the login and you will have full functionality of the switch. You can expand and contract the screen using the Bars at the left of the screen menu.

