



## Solution Overview

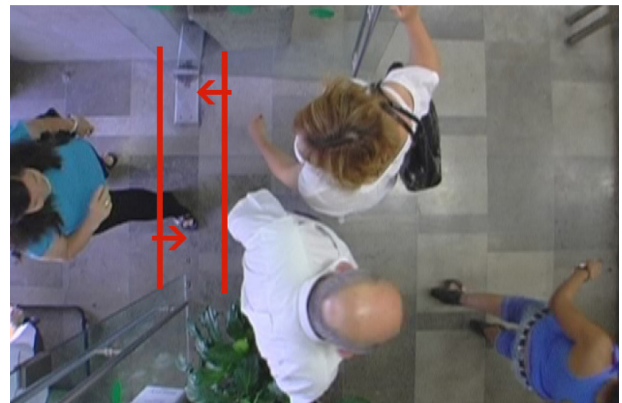
# Intelligent Video Surveillance Solution by Milestone & Agent Vi

**Agent Vi has partnered with Milestone to offer end-to-end intelligent video surveillance solutions for real-time detections and alerts, video search and business intelligence applications.**

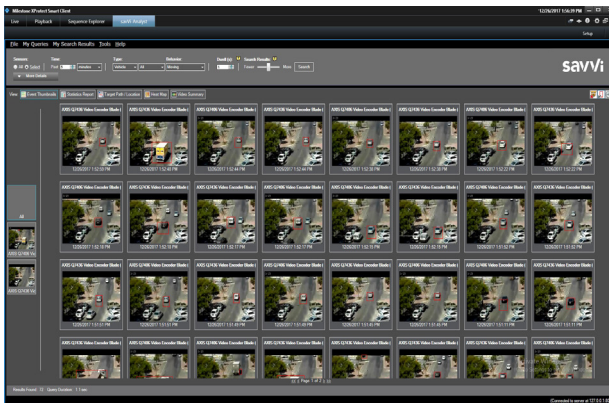
As a longtime member of the Milestone Solution Partner (MSP) Program, Agent Vi's video analytics solutions are seamlessly integrated and embedded within Milestone's video recording and management platform. This integration enables Milestone's management and recording solutions to receive, display and manage real-time events as well as analyze and present recorded video for forensic analysis and business intelligence purposes.



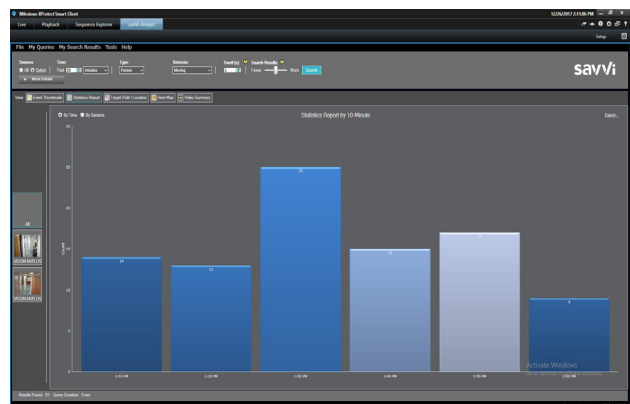
**Real-Time Event Detection:** Illegally stopped vehicle on highway



**Business Intelligence:** People counting, incoming and outgoing



**Video Search:** Video thumbnails for forensic search, presented within the Milestone XProtect Smart Client



**Business Intelligence:** Graphs for traffic volume analysis, presented within the Milestone XProtect Smart Client



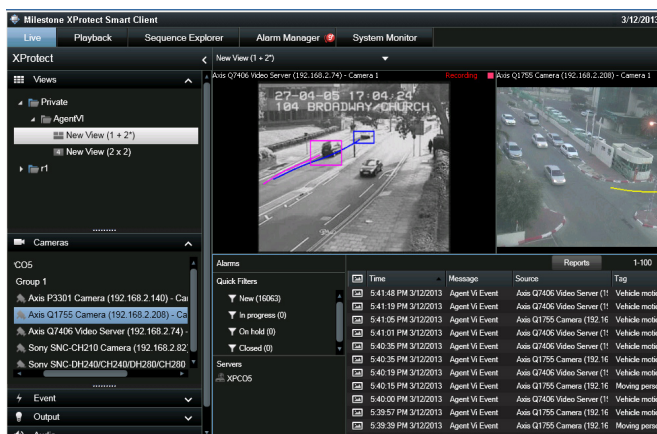
savVi™ is Agent Vi's unified video analytics software solution that offers a wide variety of analytics functionalities through a single, easy to use platform that integrates with existing or new surveillance systems. Featuring real-time event detection, video search and business intelligence applications, savVi provides a complete solution to the diverse video analytics requirements of multiple vertical markets.

savVi boasts a set of advanced, automated video analysis tools that provide for the immediate detection and extraction of events and valuable data from surveillance footage, replacing the manual and time-consuming tasks traditionally employed to monitor live video feeds or sift through recorded video. By employing savVi, users can make optimal use of their surveillance systems and allocate their time and attention in a more effective manner, thus increasing the return on investment in the surveillance system, as well as improving overall security, safety and business operations.

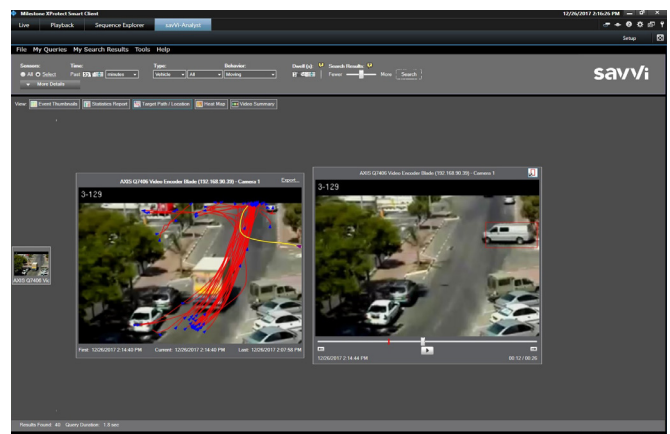
#### savVi enhances the use of surveillance systems by providing:

- Automated Real-Time Detections and Alerts – Events of interest are automatically detected through real-time analysis of multiple video sources;
- Instantaneous Video Search – Masses of recorded video can be queried and events of interest may be located and extracted within seconds;
- Comprehensive Business Intelligence – Statistical information regarding traffic volumes, traffic trends and motion patterns can be automatically generated from surveillance video.

savVi is fully integrated with Milestone's video recording and management platform, allowing the full range of savVi's capabilities on every camera connected to the surveillance system through Milestone XProtect. savVi is embedded within the Milestone Smart Client for real-time detections and alerts, enabling full event management through the Smart Client. This includes event notification with graphic overlay on the event image for both live and recorded (playback) video, simplified configuration, triggered recording, activation of outputs and more. Additionally, savVi's video search and business intelligence capabilities are embedded within the Smart Client, enabling seamless retrieval of video stored by Milestone XProtect and display of video search and statistical analysis results.



Event information received in real-time and results displayed within the Milestone XProtect Smart Client



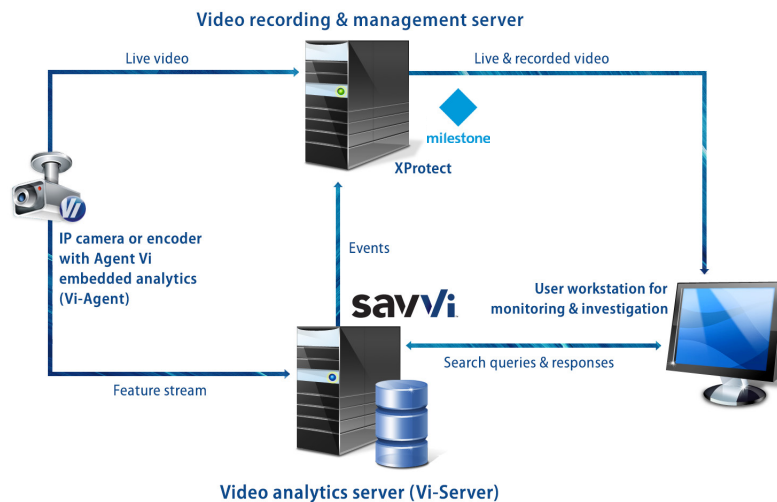
Video search results displayed within the Milestone XProtect Smart Client

## Solution Deployment: Optimized Offering & Flexible Offering

savVi can be deployed in two setups – Optimized and Flexible.

### Optimized Offering

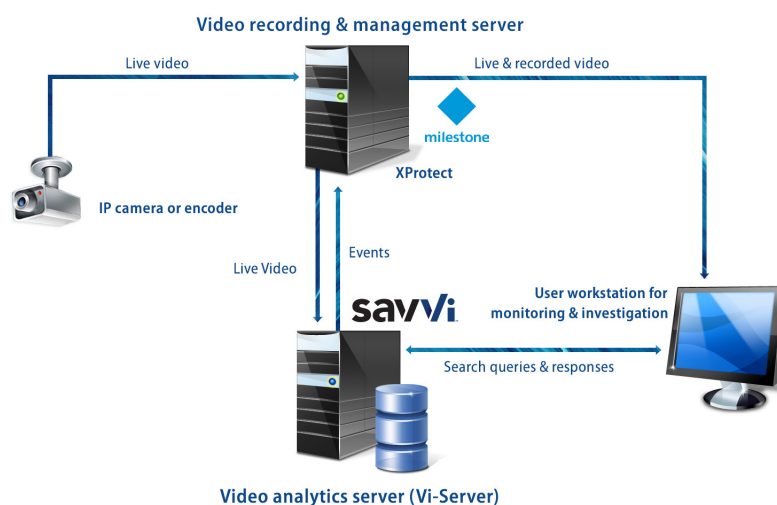
The Optimized Offering utilizes Agent Vi's distributed architecture which splits the video processing between a compatible camera or encoder and Vi-Server (Agent Vi's central server), achieving high performance with minimal dedicated hardware and bandwidth requirements. This unique architecture capitalizes on the advantages of both edge-based analytics and server-based central management, enabling up to 200 cameras running the full suite of analytics capabilities on a typical server.



Optimized Offering using an Embedded IP Camera or Encoder

### Flexible Offering

Agent Vi has developed a Flexible Offering that can analyze most cameras being recorded by Milestone XProtect. In this solution, a server component called Vi-Agent Proxy (VAP) pulls video directly from Milestone's XProtect platform, decodes the video and analyzes it.



Flexible Offering using an IP Camera or Encoder

## Supported Milestone Products

The following XProtect products are supported. Check Agent Vi's website for specific versions (Support > savVi > Supported VMS & Video Alarm Management Software) or contact [support@agentvi.com](mailto:support@agentvi.com)

- Milestone XProtect Corporate
- Milestone XProtect Expert
- Milestone XProtect Express
- Milestone XProtect Express+
- Milestone XProtect Professional
- Milestone XProtect Professional+

## Supported Camera and Encoder Vendors

Axis Communications, Cisco, Hanwha Techwin, Hikvision, IQeye, Verint, Vivotek

For the full list of certified vendors and specific models, visit Agent Vi's website (Support > savVi > Supported Edge Devices) or contact [support@agentvi.com](mailto:support@agentvi.com)

## savVi – Supported Solutions

### Real-Time Detection Capabilities

<b>Person Rules</b>	Moving in an area • Crossing a line • Tailgating • Loitering • Crowding • Occupancy
<b>Vehicle Rules</b>	Moving in an area • Crossing a line • Tailgating • Stopped vehicle • Speed analysis
<b>Static Object Rules</b>	Suspicious object • Asset protection • Lighting detection
<b>PTZ Rules</b>	Multiple real-time rules on PTZ presets • Autonomous PTZ Target Tracking

### Video Search Capabilities

<b>Search Parameters and Capabilities</b>	Target Type – People, Vehicles, Static Objects • Event Type – Moving, Stationary, Crossing a line, Occupancy, Crowding • Search by Color • Search by Size • Search within defined time frames • Search on selected cameras or group of cameras • Search for Similar Targets
<b>Search Results – Viewing Options</b>	Thumbnails – Search results presented in video playback thumbnails • Video Summary – Search results presented as one condensed clip of all related events • Target Path – Search results shown as graphical presentation of all motion paths in a scene for identification of trends/anomalies • Site Map – Search results of “Target Path” on a site map, showing multiple camera displays in a single view

### Business Intelligence Capabilities

<b>Business Intelligence Rules for Statistical Reports</b>	Count targets (people/vehicles) • Speed analysis (vehicles) • Crowding (people) • Occupancy (people)
<b>Business Intelligence Query Results – Viewing Options</b>	Statistical Analysis – Behavioral statistics in graphical and tabular reports • Target Path Analysis – Search results shown as graphical presentation of all motion paths in a scene for identification of trends/anomalies • Heat Map – Visualization of traffic levels to identify high/low traffic zones • Site Map – Search results of “Target Path Analysis” and “Heat Map” on a site map, showing multiple camera displays in a single view

Agent Vi™, Vi™ and savVi™ are trademarks of Agent Video Intelligence Ltd.

© 2018 Agent Video Intelligence Ltd., All rights reserved