



## Proximity Detection Module

The global pandemic caused by COVID-19 has changed the daily lives of people around the world and brought about new phrases, one being Social Distancing.

In line with WHO (World Health Organisation) guidelines, Governments around the world have mandated that non-cohabiting people should maintain distances of at least 2m.

Following requests from our partners and customers one of our customers, we have created a Proximity Detection module which is now available in VISuite AI.



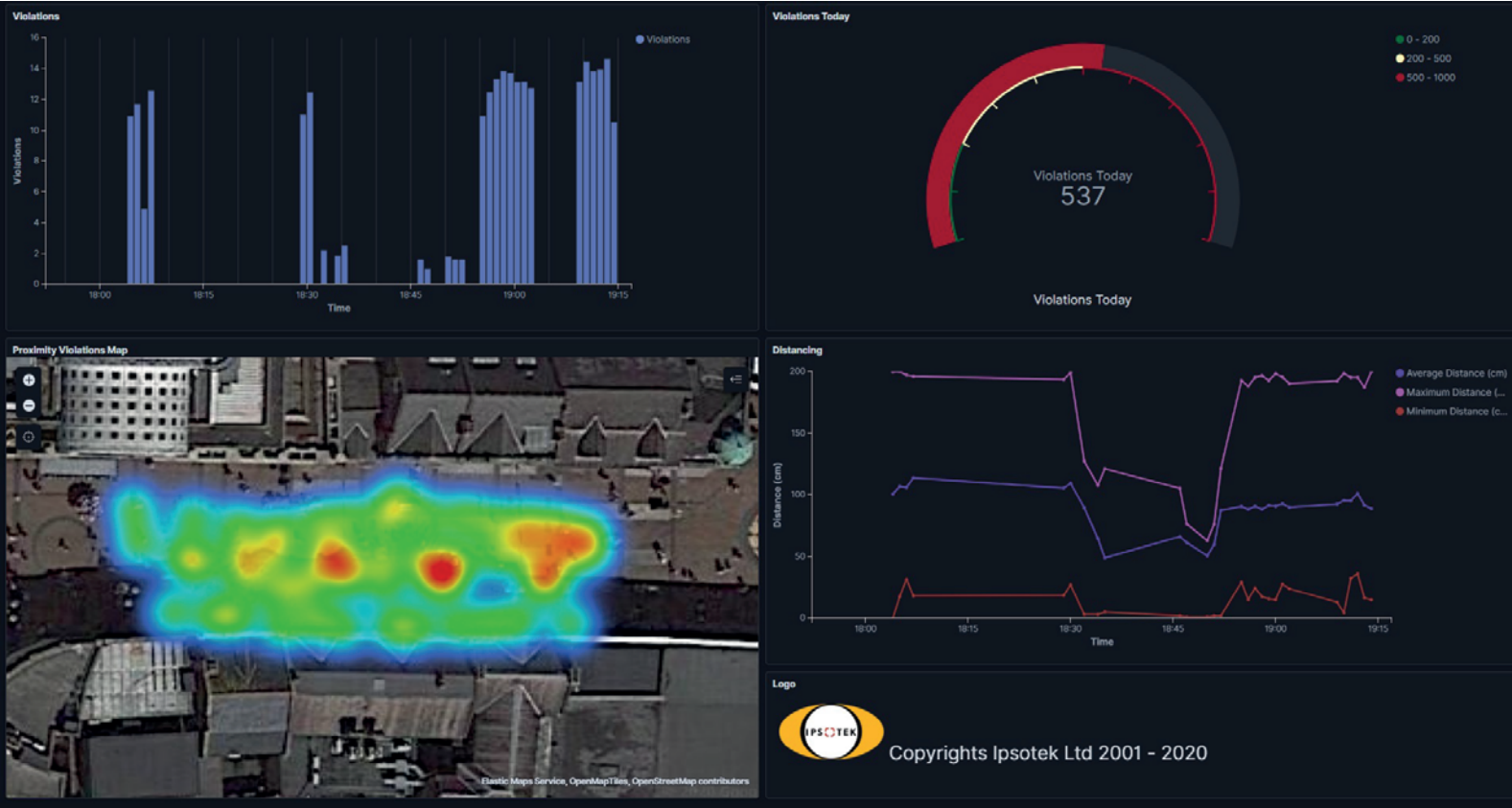
Typical Public Scene

### Description

Ipsotek's Video Analytics uniquely tracks the GPS co-ordinates of all persons in the camera FOV in real time. Using this novel approach, VISuite AI is able to precisely calculate the distance between each person and generate snap alarms immediately the distance falls below 2m. It also accurately measures the time people were less than 2m apart so if required, alarms are only generated for breaches over a prescribed period, e.g. 3 seconds, to identify people consciously engaging.

Ipsotek's patented tag and track technology automatically follows individuals across multiple cameras. This enables rapid contact tracing during forensic reviews, when it is necessary to identify those who came into contact with a person found to have contracted the virus.

The Proximity Detection image shows the proximity of members of the public to one another. With the red circles pinpointing individuals who are within 2m of another person, thus indicating a breach of the social distancing guidelines.



## VISuite AI Dashboard

Dashboards may be customized for visualizing the metadata gathered in real-time or for reviewing historical data. The reporting tools included in VISuite AI are extremely flexible and intuitive and allow operators to view multiple reports simultaneously. The example above is displaying a social distancing dashboard with four sections; violations over time, the total number of violations per day, a heat map representing the location of the violations and the average, minimum and maximum distances maintained between individuals.

## Applications

Our Proximity Detection module complements Ipsotek's Scenario-based Rule Engine (SBRE) capabilities, allowing users to tailor the proximity for various nuanced rules. A rule can be created that will only trigger an event if people remain in close proximity to each other for an extended amount of time, reducing the amount of nuisance events.

Use cases include:

- Shopping Malls – loitering and crowding at hot spots such as escalators, entrances & exits
- Supermarkets – managing aisles and checkout areas
- Postal services – maintaining social distancing throughout sorting facilities
- Factories & Warehouses – duty of care for employees welfare
- Parks and recreation areas – non-compliance with government guidance

For more information please visit [www.ipsotek.com](http://www.ipsotek.com) or contact one of our offices

Ipsotek Ltd  
UK & Europe  
(+44) 20 8971 9300  
sales.uk@ipsotek.com

Ipsotek DMCC  
Middle East & Africa  
(+971) 4 551 5102  
sales.me@ipsotek.com

Ipsotek PTE  
APAC  
(+65) 6513 9723  
sales.apac@ipsotek.com