



The World's Leading PSIM Software Developer

IPSecurityCenter™ Installing a Device Driver



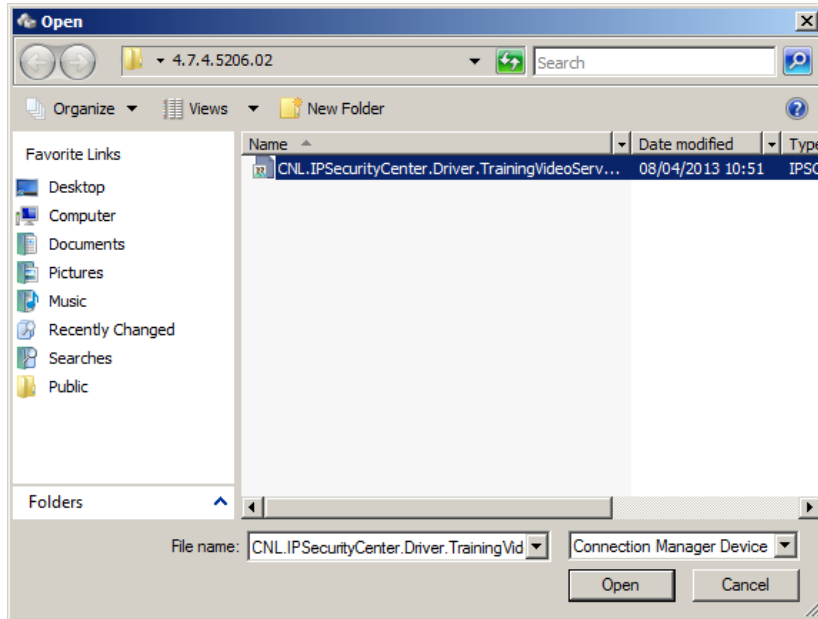
At CNL Software we believe in a connected world, where security and life safety are not compromised by silos of information that cannot talk to each other.

Installing a Device Driver

Device drivers can be loaded into a solution using the Device Driver Manager dialog in System Configuration.

To load a single device driver:

1. Open the **System Configuration** window and on the toolbar, click **Device Drivers**.
2. Click **Install**.
3. Navigate to the *.ipsedriver* file and then click **Open**.



4. The device driver will be loaded and then shown within the Device Driver Manager. Expanding the driver package will show the different types of devices available within the package; for example, the *TrainingVideoServer* package contains information for both the Training Server and the Training Camera.

Device Driver Packages		
Name	Version	Additional Information
Installed Device Driver Packages		
CNL.IPSecurityCenter.Driver.TrainingDriver	3.5.0.58618	
Tracking Camera		
Training Door		
Training Camera		
Training Server		

Adding Devices

Once the Connection Manager is running and the device driver is loaded, a device can be added into the solution. Typically, the parent device for example, a video management server (VMS)) is added first, which then automatically adds all the child devices (for example, all cameras connected to the VMS).

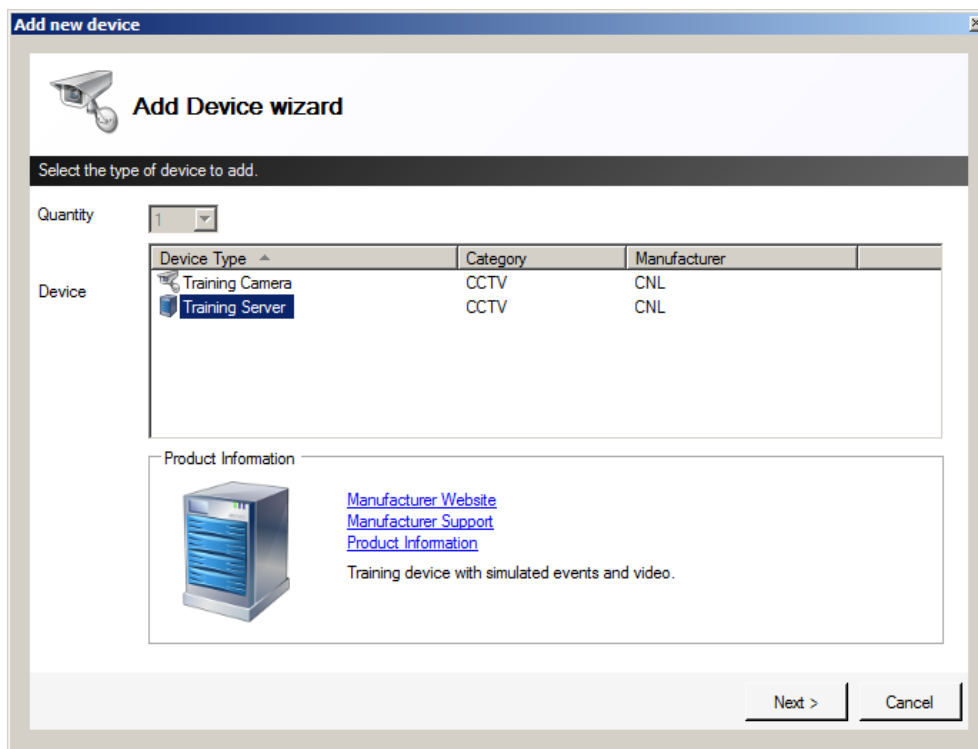
Devices can be added via the context menu or via a connection manager. All devices must be associated with a Connection Manager, therefore when adding a device using the context menu a connection manager must be specified.

To add a single device (using training server as an example):

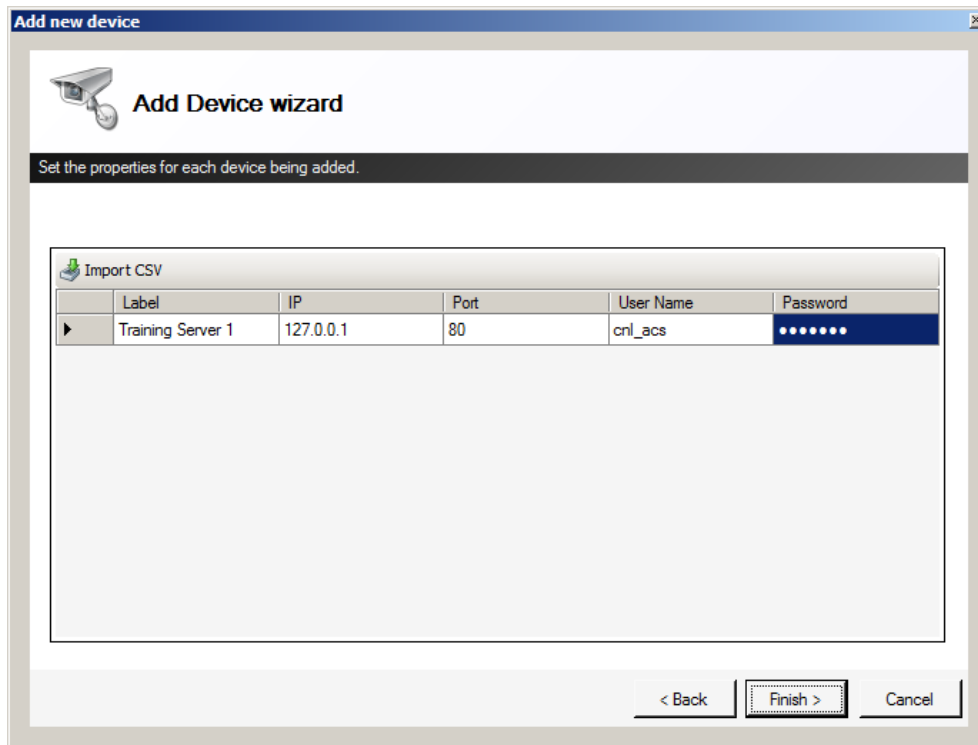
1. Open the System Configuration window.
2. Open the **Add Device Wizard** using one of the following methods:
 - In the **Overview** pane, right-click a Connection Manager and click **Add Device**.
Or
 - Right-click anywhere in the Overview – System Objects tab and click New > Device On > Connection Manager.

The Add Device Wizard appears.

3. Click **Start** to continue.
4. On the **Select the type of device to add** page, select the **Training Server** device type and then click **Next** to continue.

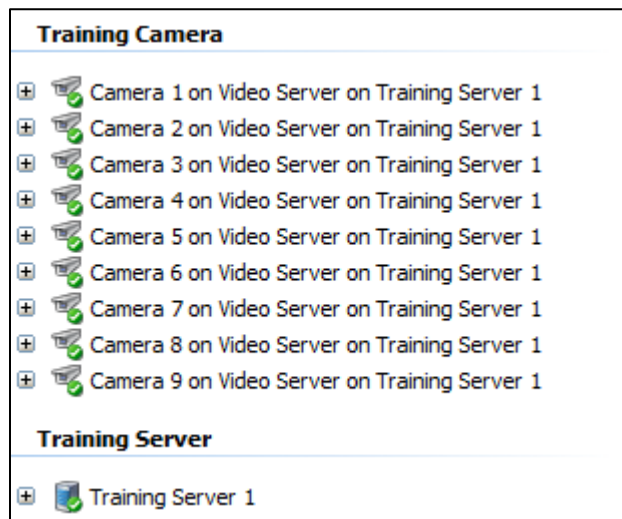


5. Enter the details for the device, then click **Finish** to add the device. In the following example, the connection details are taken from the training server RDIN, however these details would differ from user to user.



6. Enable the device by setting the **Enabled** property to **True** in the property grid or by right-clicking the device and clicking **Enable**. This will initialize the device and add any connected devices. You can also enable and rename the devices, if required.

Note: Devices must always be enabled for it to raise events. Care must be taken to enable all devices that needs to be monitored by the IPSecurityCenter, as disabled devices do not raise any events.



Note: Folders should be used to contain related objects to provide a logical system structure. Create the required folders for new devices and drag the newly created devices into them.

Milestone XProtect Installation

10.1 Prerequisites

Install the SDK runtime on all machines running the following services / software:

- * Client
- * Video Export Server
- * Connection Manager

Driver Installation

- * Start the IPSecurityCenter™ client and any supporting services
- * Open the Device Driver Manager from the System Configuration
- * Click the Install button
- * Select the Milestone Systems Milestone XProtect Corporate Management Server Driver Package in the Open file dialog
- * Wait for the driver to be uploaded

The driver packages should be listed in the Device Driver Manager.

Device Configuration

- * Right click in a folder (e.g. Devices) in the System Configuration: New à Device On à Server
- * Click Next on the introduction
- * Select Milestone Systems in the Device Manufacturer list
- * Select Milestone XProtect Corporate Management Server in the Available Devices list
- * Click Next to enter the device details: Enter the Milestone Systems Milestone XProtect Corporate Management Server hostname or IP address, the port (use 0 to use the default port), and user name and password if integrated security is not being used.
- * Click Next and Finish to add the device.
- * Enable the device to bring it online.

Additional Configuration Details

Device Detection

When the Management Server is brought online, it will automatically create any Recording and Alert Servers that are configured within the Milestone system. Any subsequently configured Recording and Alert Servers will be added whenever the Management Server is brought online. Bringing a Recording Server online will add all configured cameras for that server from the Milestone system.

Alerts Server does not login using basic credentials for SDK 4.5 (2013), this is known issue with the Milestone 2013 SDK. This issue is fixed in 2014 and later, alternately use Windows Credentials authentication.

Please note: When a user upgrades the driver – please ensure to restart the Connection Manager.

User Authentication

It should be noted that although the IP and port properties are exposed for the additionally detected devices (Recording/Alert Servers) these properties are not used and do not require the fields to be populated, instead they inherit the values set by the Management Server

Additional Details

Hardware acceleration is only supported by Milestone 2016 SDK version - R3 and above