

BOSCH - MILESTONE

NATIVE VIDEO ANALYTICS  
INTEGRATION

(DYNAMIC EVENTS)

# PREREQUISITES

# Native Video Analytics Integration

## Prerequisites

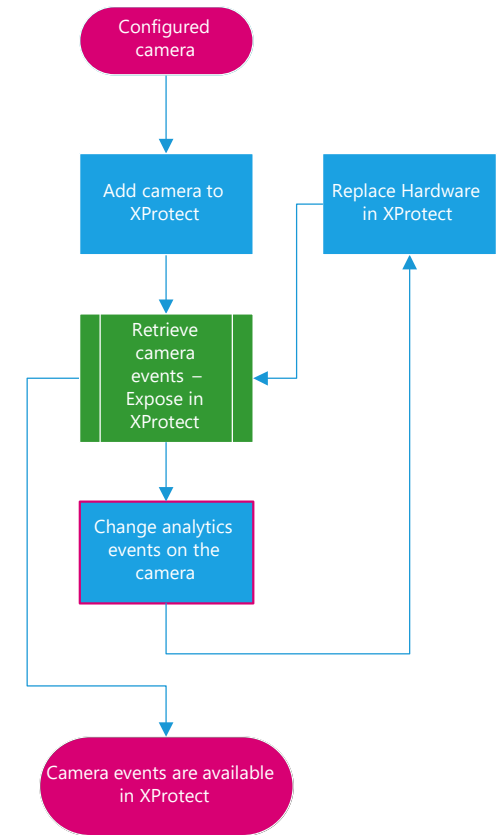
- ▶ Milestone XProtect (advanced version)
- ▶ Device Pack 10.5 installed
- ▶ Intelligent Bosch camera with Video Analytics
  - ▶ Standard as of the IP 3000i series: Essential Video Analytics
  - ▶ Standard as of the IP 7000i series: Intelligent Video Analytics

# OPERATION

# Native Video Analytics Integration

## Operation / Workflow

- ▶ All available events (not only analytics events) that are available on a Bosch camera are now exposed via the Bosch integration API and hence available in Milestone's "Driver Events" control.
- ▶ The available events are retrieved during the process of adding a device to Milestone.
- ▶ This setup fixed in XProtect and the events are available in the Milestone Alarm- and Rule-Engine.
- ▶ In case an alarm changes on the camera (which can basically only be true for analytics events) the camera needs to be 're-added' to XProtect.
  - ▶ This can happen through the 'device replacement' process in XProtect.
  - ▶ By doing so, all the recordings and old associations are kept and no information is lost.

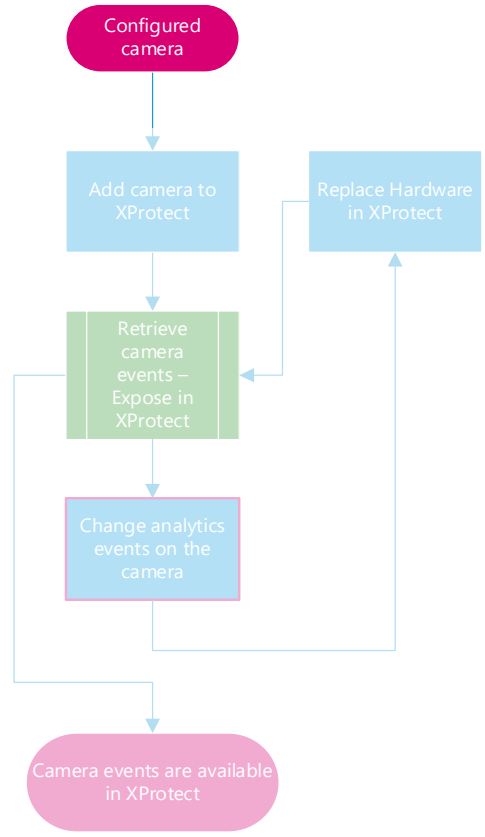


# Native Video Analytics Integration Operation / Workflow

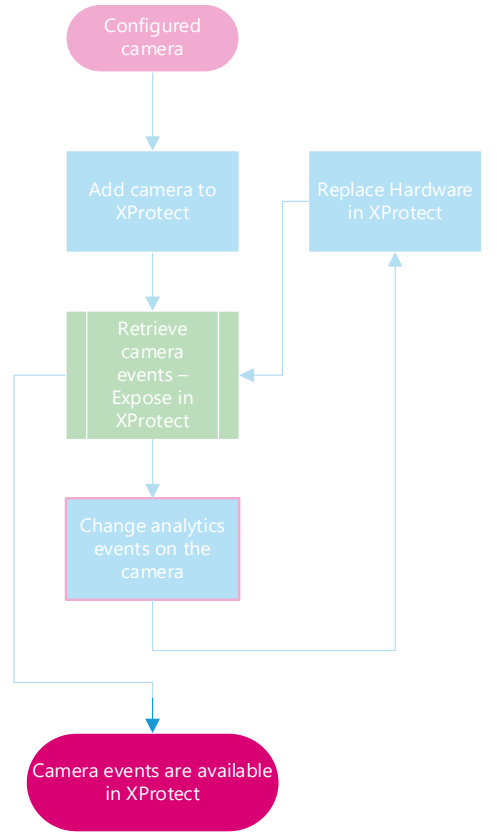
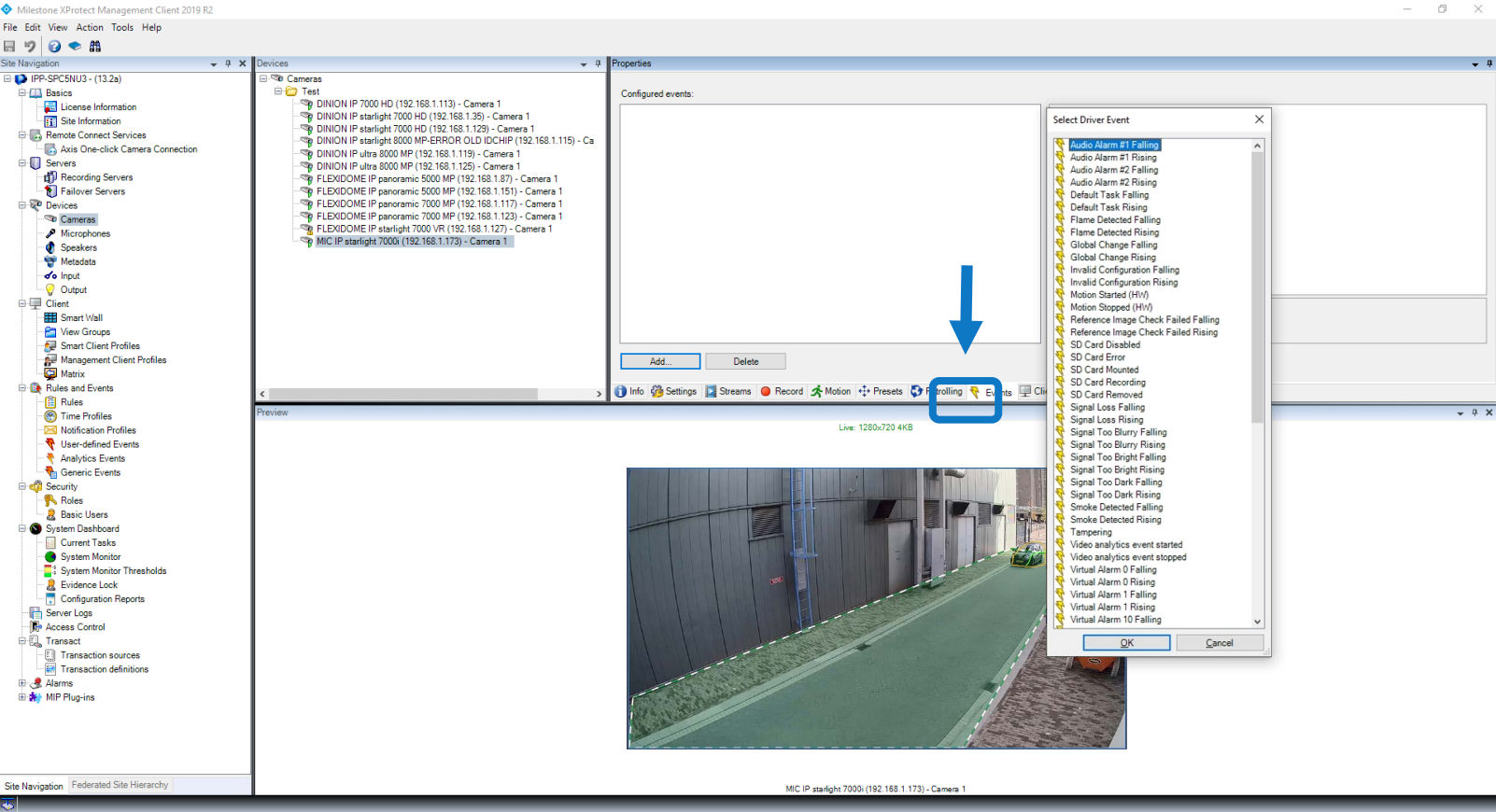
The screenshot shows the Bosch Security Systems web interface for a MIC IP starlight 7000i camera. The left sidebar contains a 'Configuration' menu with sections for Enhance, Recording, Alarm, Network, and Service. The 'VCA' (Video Content Analysis) option is selected under the Alarm section. The main area displays 'Intelligent Video Analytics configuration' with a live video feed of an outdoor area. A 'Settings' dialog box is open, showing 'Surveillance Tasks' with a table:

Tasks	Alarm
Detect any object	<input checked="" type="checkbox"/>
	<input type="checkbox"/>
	<input type="checkbox"/>
	<input type="checkbox"/>
	<input type="checkbox"/>
	<input type="checkbox"/>
	<input type="checkbox"/>
	<input type="checkbox"/>

Buttons for 'Set', 'Cancel', and 'Freeze' are visible below the video feed. The 'Settings' dialog also has 'New', 'Edit', and 'Delete' buttons at the bottom.



# Native Video Analytics Integration Operation / Workflow

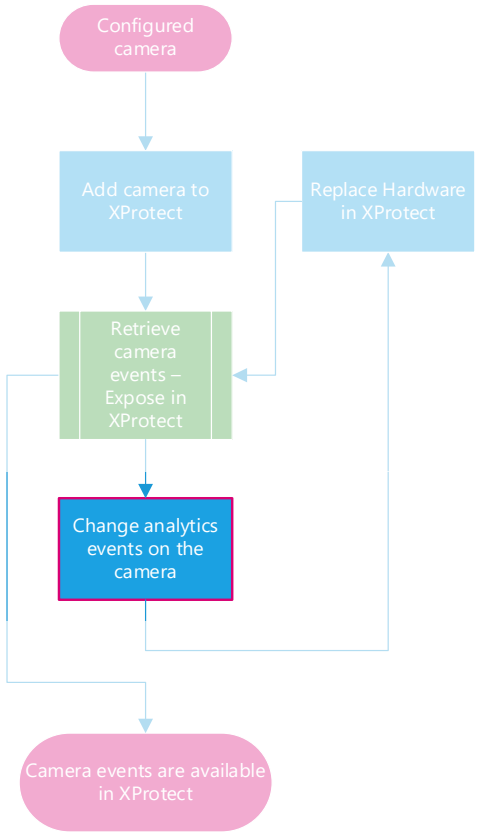


# Native Video Analytics Integration Operation / Workflow

The screenshot shows the Bosch Security Systems web interface for a MIC IP starlight 7000i camera. The main view displays a live video feed with a green detection zone overlaid on a parking area. A 'Settings' pop-up window is open, showing the 'Surveillance Tasks' configuration. The tasks listed are:

Task	Alarm
This is the first rule / AD	<input checked="" type="checkbox"/>
A line crossing	<input checked="" type="checkbox"/>
Leaving left field	<input checked="" type="checkbox"/>
	<input type="checkbox"/>
	<input type="checkbox"/>
	<input type="checkbox"/>
	<input type="checkbox"/>
	<input type="checkbox"/>

Buttons at the bottom of the settings window include 'New', 'Edit', and 'Delete'. The interface also features a navigation menu on the left with options like 'Live', 'Playback', 'Configuration', 'Dashboard', 'Links', and 'Logout'.





# Native Video Analytics Integration Operation / Workflow

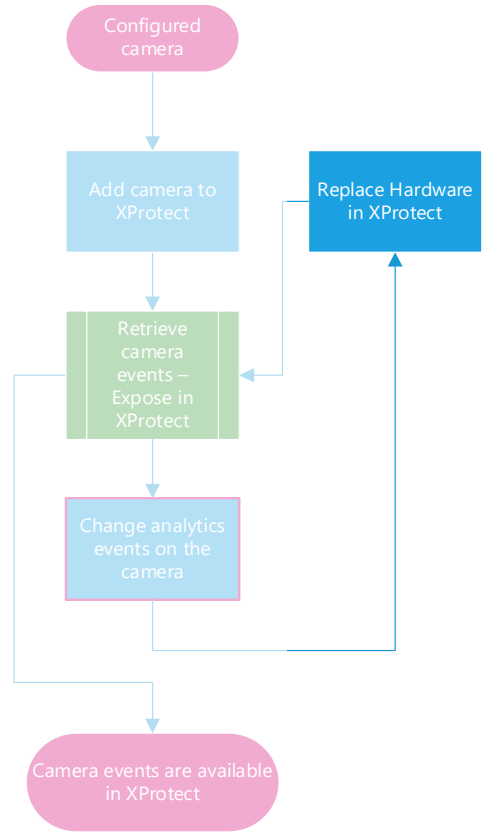
**Recording Server**

- IPP-SPCSNU3
  - DINION IP 7000 HD (192.168.1.113)
  - DINION IP starlight 7000 HD (192.168.1.35)
  - DINION IP starlight 7000 HD (192.168.1.129)
  - DINION IP starlight 8000 MP-ERROR OLD IDCHIP (192.168.1.115)
  - DINION IP ultra 8000 MP (192.168.1.119)
  - DINION IP ultra 8000 MP (192.168.1.125)
  - FLEXIDOME IP panoramic 5000 MP (192.168.1.87)
  - FLEXIDOME IP panoramic 5000 MP (192.168.1.151)
  - FLEXIDOME IP panoramic 7000 MP (192.168.1.117)
  - FLEXIDOME IP panoramic 7000 MP (192.168.1.123)
  - FLEXIDOME IP starlight 7000 VR (192.168.1.127)
  - FLEXIDOME IP starlight 8000i (192.168.1.187)
  - MIC IP starlight 7000i (192.168.1.173)

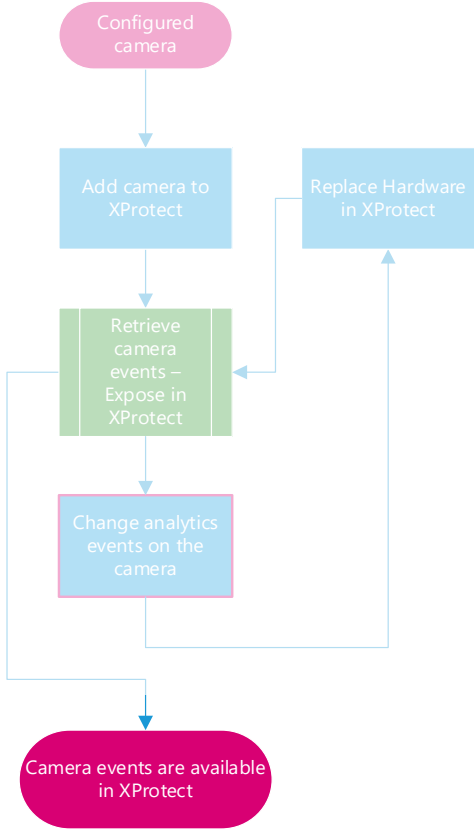
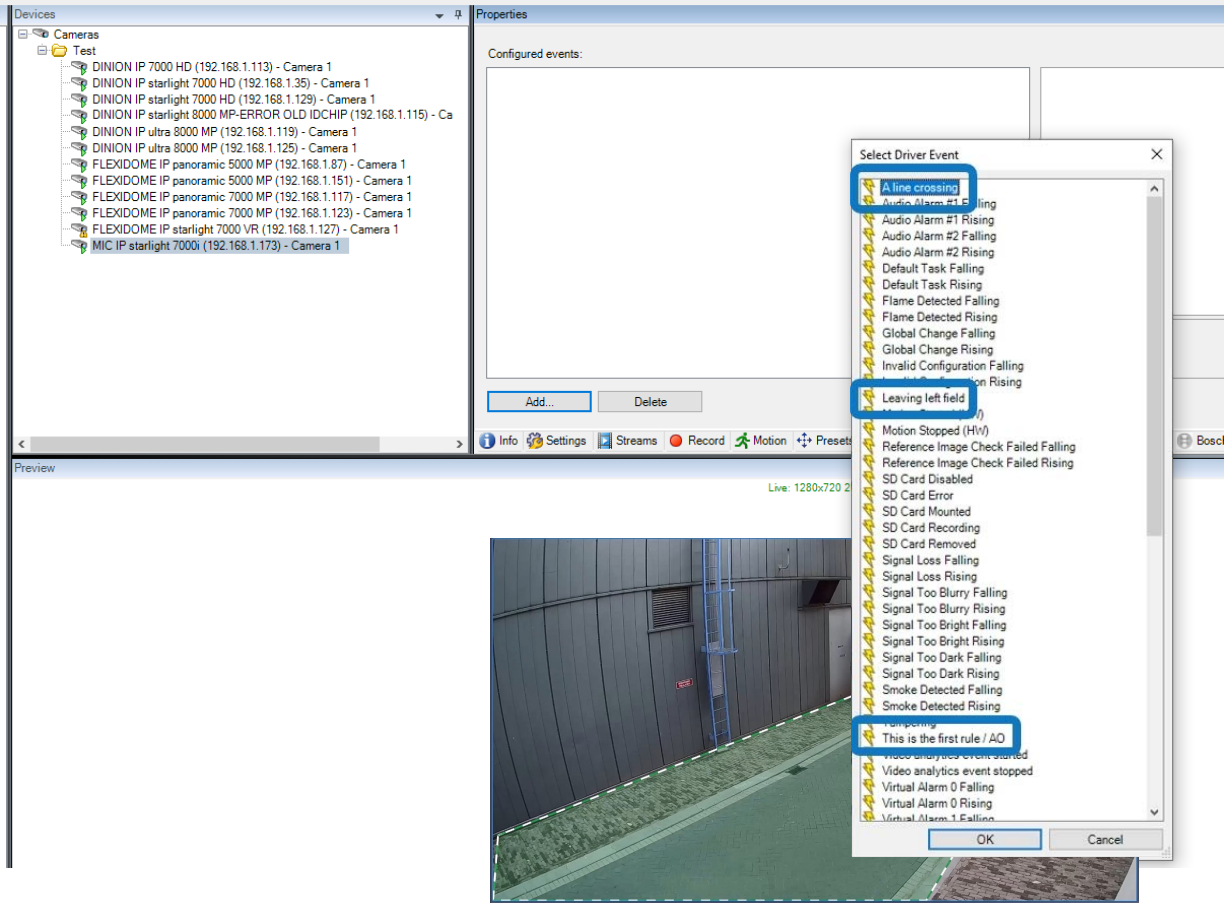
**Replace Hardware**

For each new device, select which old device (including existing databases) to inherit. If a new device should not inherit any old device, select 'None'. Databases will be deleted for old devices which are not inherited.

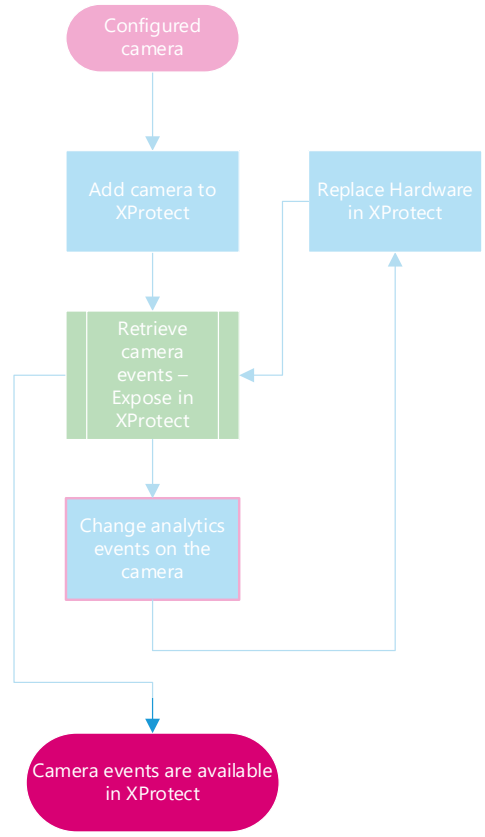
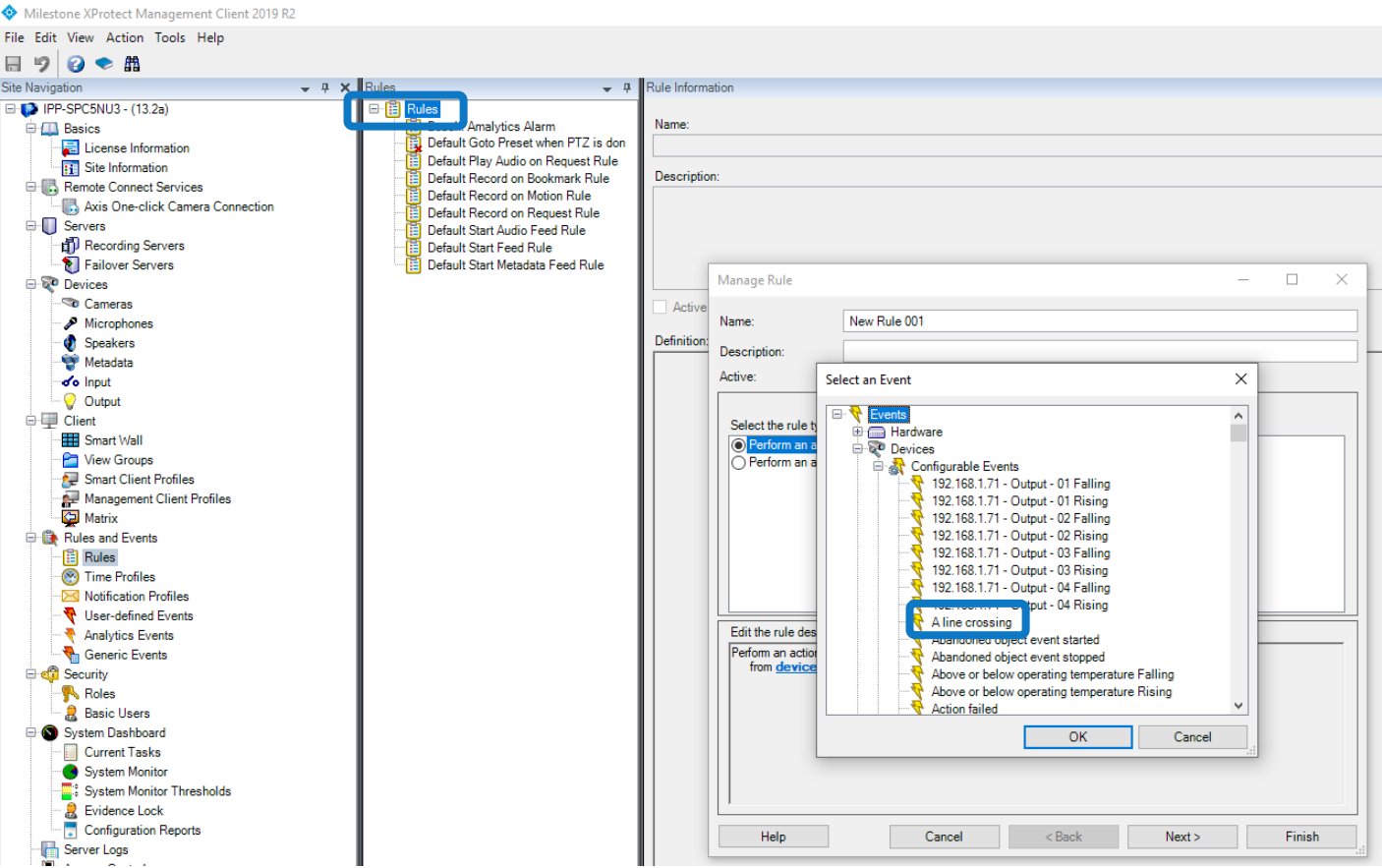
New Hardware Device	Inherit
<b>Cameras</b>	
Camera 1	MIC IP starlight 7000i (192.168.1.173) - Camera 1
<b>Metadata</b>	
Metadata 1	MIC IP starlight 7000i (192.168.1.173) - Metadata 1
<b>Output</b>	
Output 1	MIC IP starlight 7000i (192.168.1.173) - Output 1
Output 2	MIC IP starlight 7000i (192.168.1.173) - Output 2
Output 3	MIC IP starlight 7000i (192.168.1.173) - Output 3
Output 4	MIC IP starlight 7000i (192.168.1.173) - Output 4



# Native Video Analytics Integration Operation / Workflow



# Native Video Analytics Integration Operation / Workflow



# KNOWN LIMITATIONS

# Dynamic event integration

## Known limitations

- ▶ The 'Detect any object' event does not have a state by default in the Bosch rule engine. This can be changed by modifying the rule script in the 'Alarm Task Editor'.

