

# MILESTONE AND BOSCH

FORENSIC SEARCH

*There is no one size fits all. With Bosch Forensic Search integration into Milestone you can break free from the ordinary: you now gain complete control on **how you want** to search the data - even with new criteria, not used before.*

# Bosch and Milestone forensic search integration

## Find events that were originally not set up as an alert



IP video cameras with built-in video analytics

Metadata enables fast and easy identification of objects or incidents



Bosch Forensic Search

Forensic search enables search independent of any predefined search criteria



**Bosch Milestone forensic search solution:**  
The benefit you will realize is full flexibility to search all video material regardless of what is preconfigured.



Centralized Search in Xprotect Smart Client

One search platform for all your data. Quicker, easier, and more efficient investigations.



# AN INTRODUCTION TO MILESTONE XPROTECT CENTRALIZED SEARCH

# Milestone Centralized Search

## One search platform for all your data



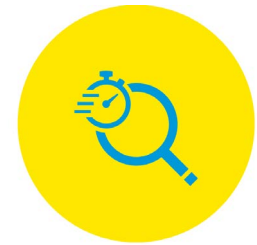
### Everything you search for in one place

Search for video sequences, alarms, events, bookmarks and motion all in one place



### Easily search for data from integrated solutions

Search for data types from technology partner plug-ins once integrated with Search



### Work faster and more efficiently

Save your search templates and speed up investigations

# Milestone Centralized Search

## Less searching. More finding. All in one place

### ► Challenges:

- Whether it's a routine review of live video, or an investigation of video in playback, you **need to find evidence quickly**.
- You may have a **limited amount of data** to work with – like the time range of the incident, a related alarm or bookmark, an event or a motion registry.
- You might also have **access to information** like gender, shirt or vehicle color that is generated by a **technology partner plug-in** once integrated with the search tool.

### ► Solution:

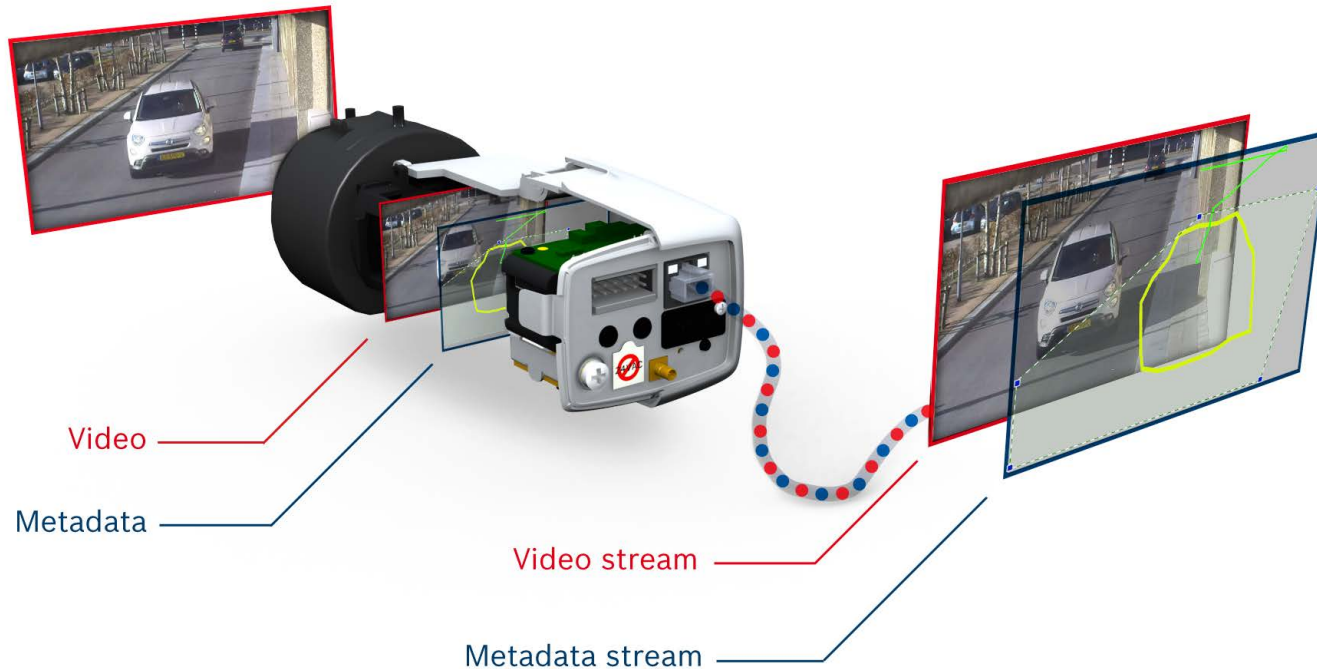
- No matter which types of data you have, centralized search allows you to fill in the relevant categories with the data available on one **Search screen** and find what you're looking for almost **instantly**.



# AN INTRODUCTION TO BOSCH METADATA AND FORENSIC SEARCH

# Bosch Metadata

## Enables fast retrieval of data from hours of stored video footage



The metadata describing the specific image details:

1. Triggers alarms based on predefined conditions
2. Is pushed to a database and stored. By searching the metadata using smart search criteria you can instantly retrieve the correct data from hours of stored video.



# Bosch metadata

## Metadata delivers the relevant data for forensic search

Intelligent Bosch cameras with built-in Video Analytics capture the following data from a scene:



---

Object class

---

Speed

---

Size

---

Color

---

Trajectory

---

Timestamp

---

Position on a map

---



Unique object ID

# Bosch forensic search

## Complete flexibility in the way you search metadata

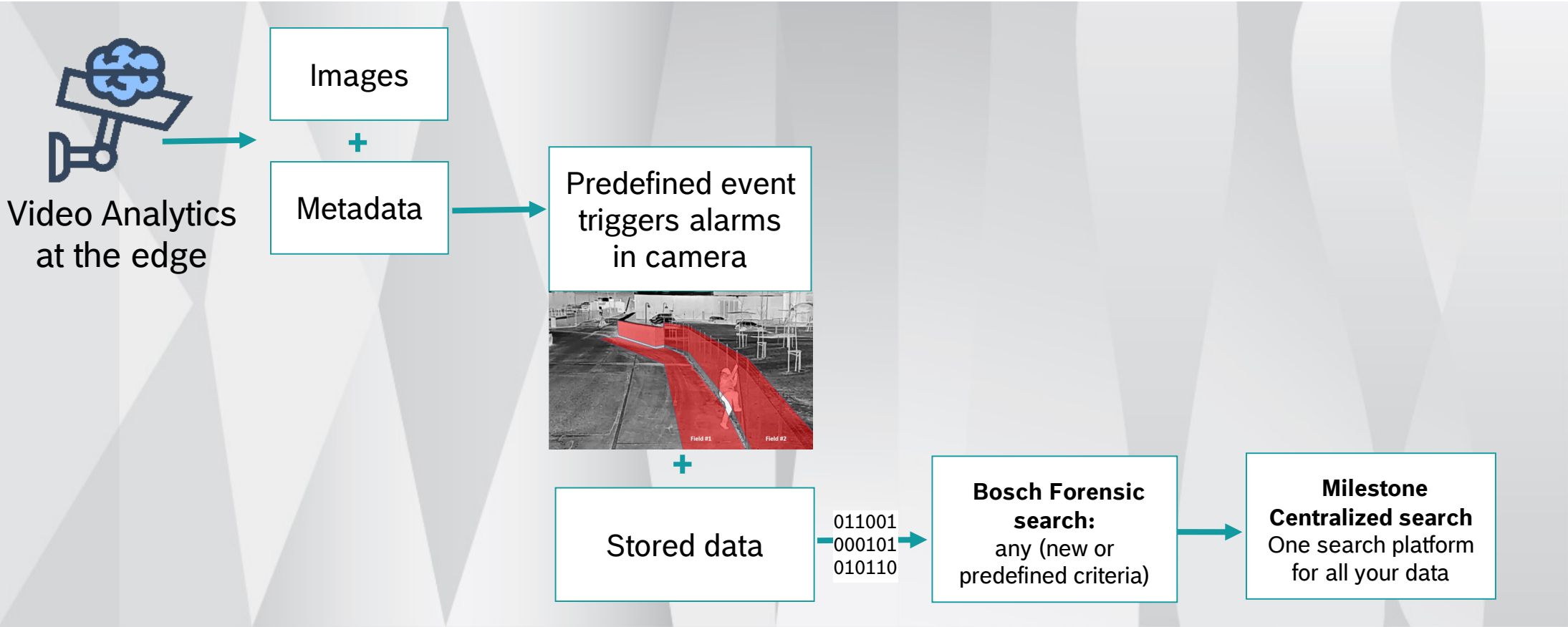
- ▶ Unlike other solutions that only offer searches via recorded alarms, forensic search enables you to **search through material while continually changing search criteria.**
- ▶ There's no need to set them up as initial alarm criteria, you can **add new criteria at any time, giving you complete flexibility in the way you search for evidence.**



# HOW DOES IT WORK

# Bosch forensic search plug-in Milestone Centralized Search

## How does it work ?



# Bosch and Milestone forensic search integration

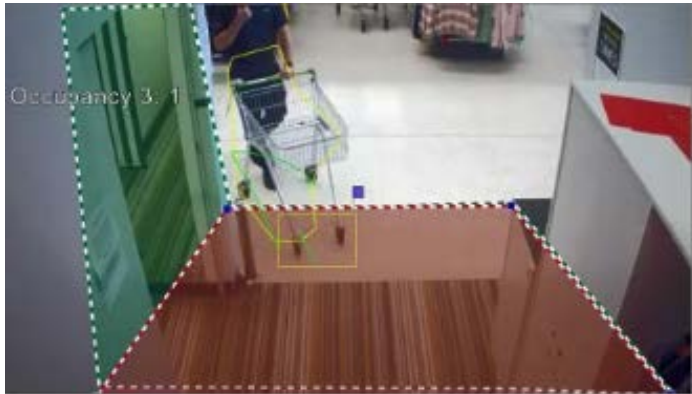
## Find events that were originally not set up as an alert

The screenshot shows the Milestone XProtect Smart Client interface. The top navigation bar includes 'Live', 'Playback', 'Search', 'Alarm Manager', and 'System Monitor'. The 'Search' tab is active, displaying a list of cameras for selection. The selected camera is 'DINION IP starlight 7000 HD (192.168.1.35) - Car'. Below the camera list, there are checkboxes for 'Detect any object' and 'Crossing middle line', both of which are checked. A central video preview window shows a street scene with a blue car highlighted by a yellow bounding box. The interface also includes a 'Set filter for 1 Camera' button and a '1 Camera selected' indicator. On the right side, there are options for 'Order results by' (set to 'Newest event time') and 'Thumbnail size'.

# Milestone and Bosch

## Forensic search use case to improve security

### Retail example



### Challenge

- ▶ Once a theft occurs, a store's security manager needs to watch hours of recordings trying to find the exact moment when the object was removed from the shelf.

### Solution

- ▶ You can easily **define a specific perimeter**, meaning the area or even a specific shelf in the store from where the item was stolen.
- ▶ The video database can be very **quickly scanned** for any **suspicious activity** that **occurred within that perimeter**.
- ▶ Thanks to the forensic search function, even a huge recording database can be scanned for a specific event **within seconds**.
  - ▶ It is possible to search for any motion in a selected area or use enhanced search function to find events in recorded video data such as objects within, entering, or leaving an area, objects traversing a route, objects loitering in an area, removed objects and more.
- ▶ And search rules can be changed even after an event.

# Milestone and Bosch

## Forensic search use case to optimize business processes

### Retail example



### Challenges

- ▶ Optimizing business processes is a continuous challenge for retailers.
- ▶ Massive amounts of streaming data from the retailers' security cameras could become redundant, if not repurposed.

### Solution

- ▶ Because they can provide all kinds of statistics in the form of metadata, cameras featuring built-in Video Analytics also enable a scene to be analyzed for reasons that go far **beyond security**.
- ▶ Forensic search enables you to search through material while continually changing search criteria.
  - ▶ By setting a perimeter in front of the counter, you can determine busiest business hours with forensic search.
  - ▶ Reliable customer traffic data will help you to ensure sufficient staffing during peak times and to continually optimize the quality of customer service.
- ▶ There's no need to set them up as initial alarm criteria, you can add new criteria at any time, giving you complete flexibility in the way you search for evidence.

THANK  
YOU