

# Milestone Access Control Module (ACM) Setup

 By IMRON Corporation

## Introduction

The UnityIS Web Milestone Access Control Module (ACM) integration merges IMRON Corporation's world class open architecture security management software and Milestone's video management system into a powerful security solution under a single, common operating picture using the Milestone XProtect Smart Client. The integration gives users a consolidated interface to operate access control systems. Dedicated functions in XProtect Smart Client enable users to effectively monitor access events, manually control passages, and conduct investigations on specific access points or cardholders from the UnityIS security management software. The integration is scalable supporting small sites to enterprise sites and allows the operator(s) to view UnityIS access control and alarm transactions from the Milestone XProtect Smart Client. The UnityIS open architecture offers legacy customers a method to leverage their existing installations and expand using the latest innovative field hardware.

## Prerequisites

Please ensure that you have the following prerequisites:

- UnityIS v 11.5.x or higher
- UnityIS Video Manager Module license
- Milestone XProtect Management Client and valid door licenses
- XProtect Smart Client
- Milestone XProtect Event Server
- Microsoft SQL Server 2012 or newer (any suite)
- Milestone ACM plugin files

Note: Any 2017 version or newer of Milestone is compatible with the integration. Please ensure that your Milestone software supports Milestone Access.

# Installation of the Integration

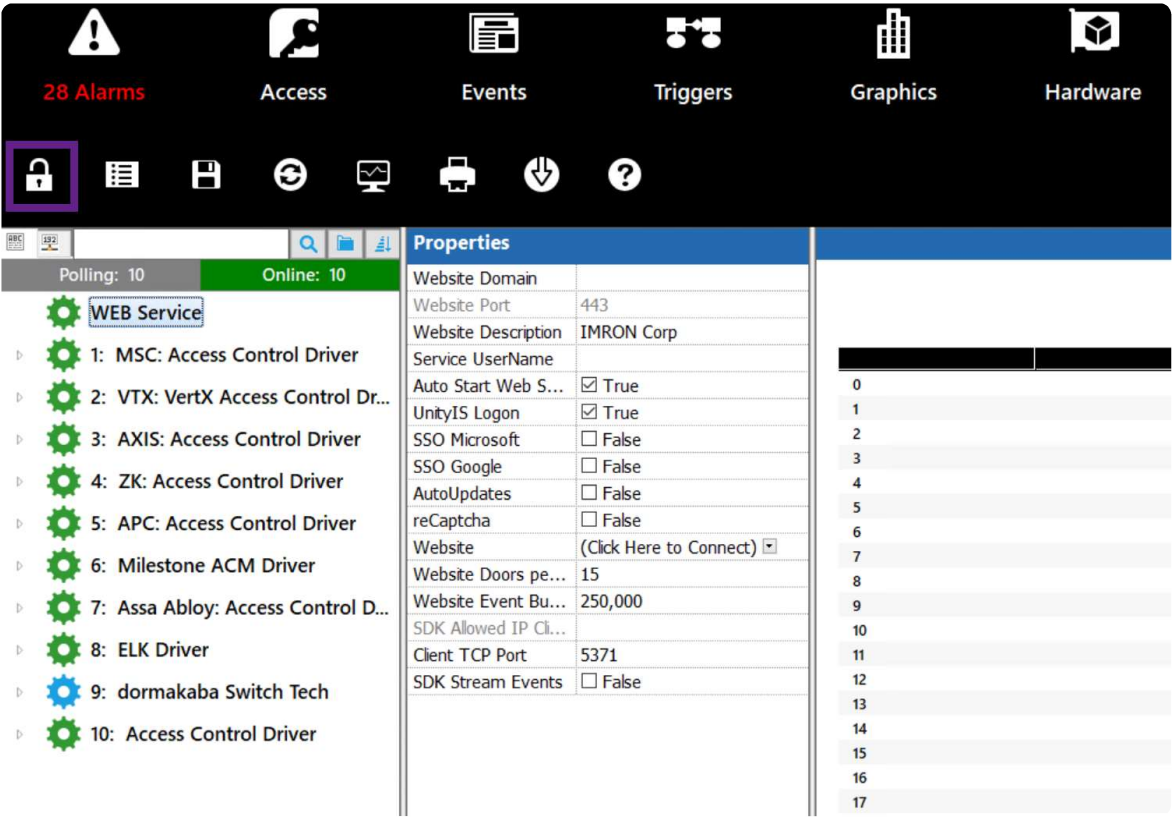
## I. Install or Upgrade UnityIS

The new Milestone ACM integration **REQUIRES** UnityIS version 11.5.x or higher. To obtain the full installation (For NEW INSTALLATIONS ONLY), please contact IMRON Technical Support (support@imron.com).

## II. Install the Milestone ACM Driver

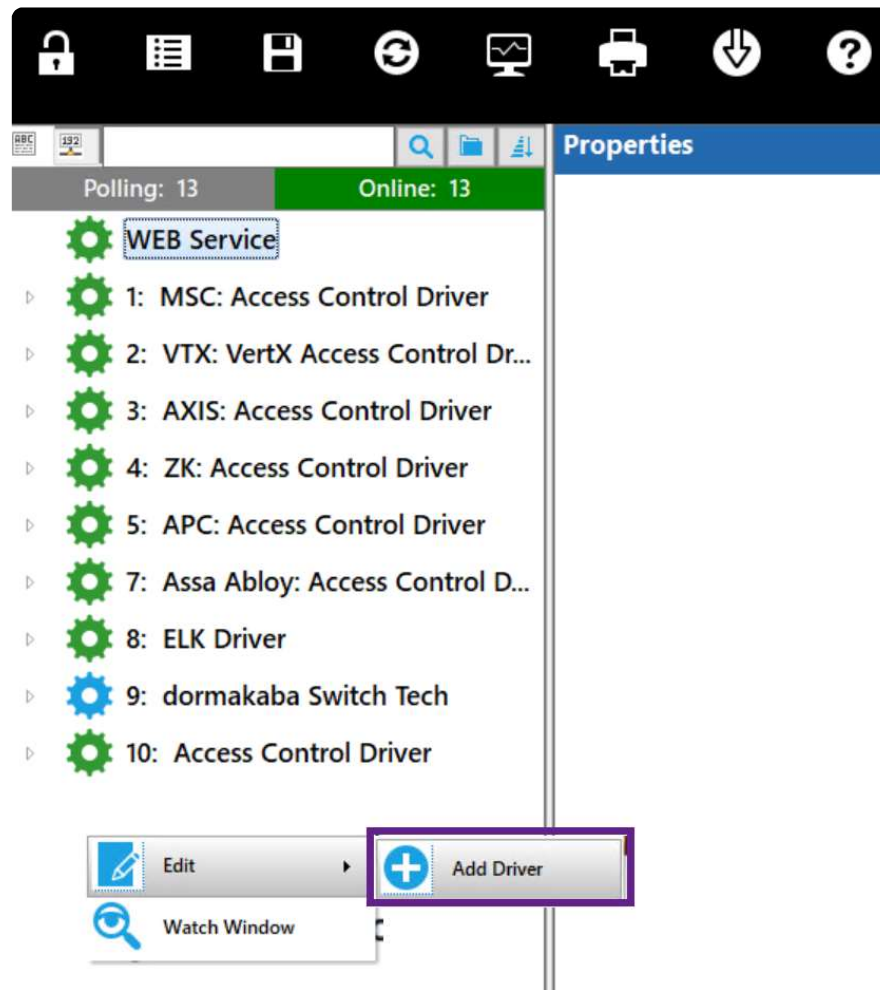
Log into UnityIS & navigate to Hardware Manager and unlock the module. (See Figure 1)

Figure 1:



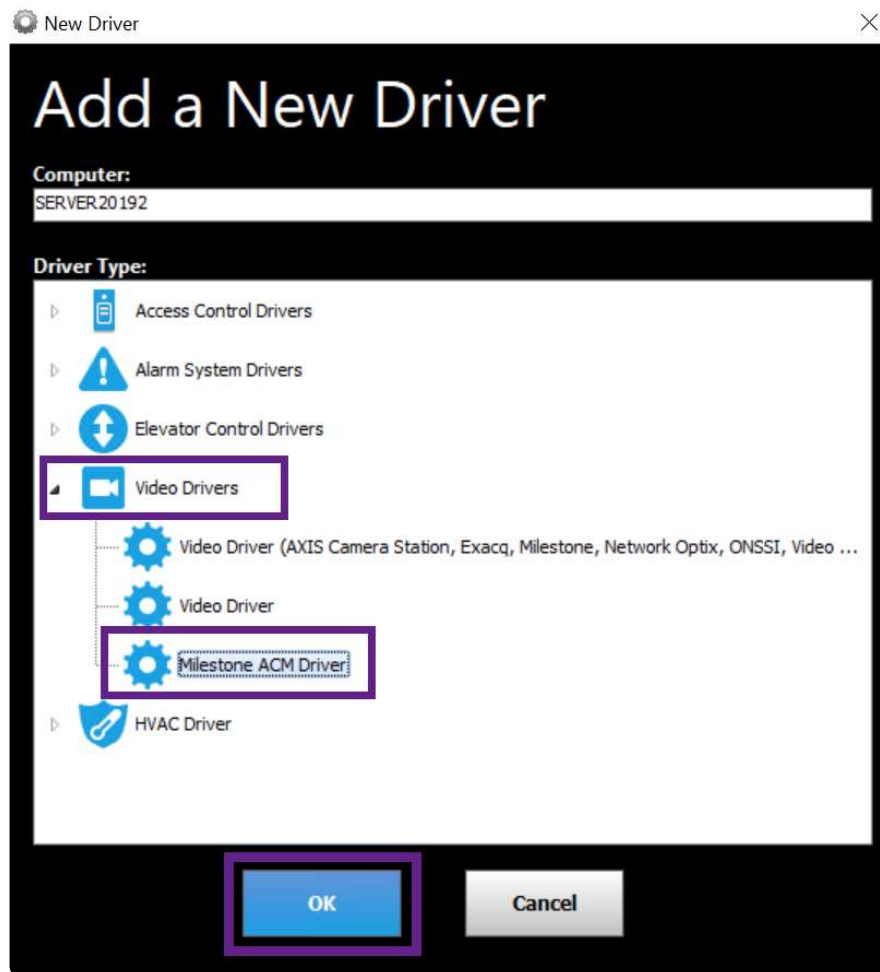
Right-click on the hardware tree list, select “Edit” and click on 'Add Driver'. (See Figure 2)

Figure 2:



In the 'New Driver' window, expand 'Video Drivers' and select 'Milestone ACM Driver' and click 'OK'. (See Figure 3)

Figure 3:



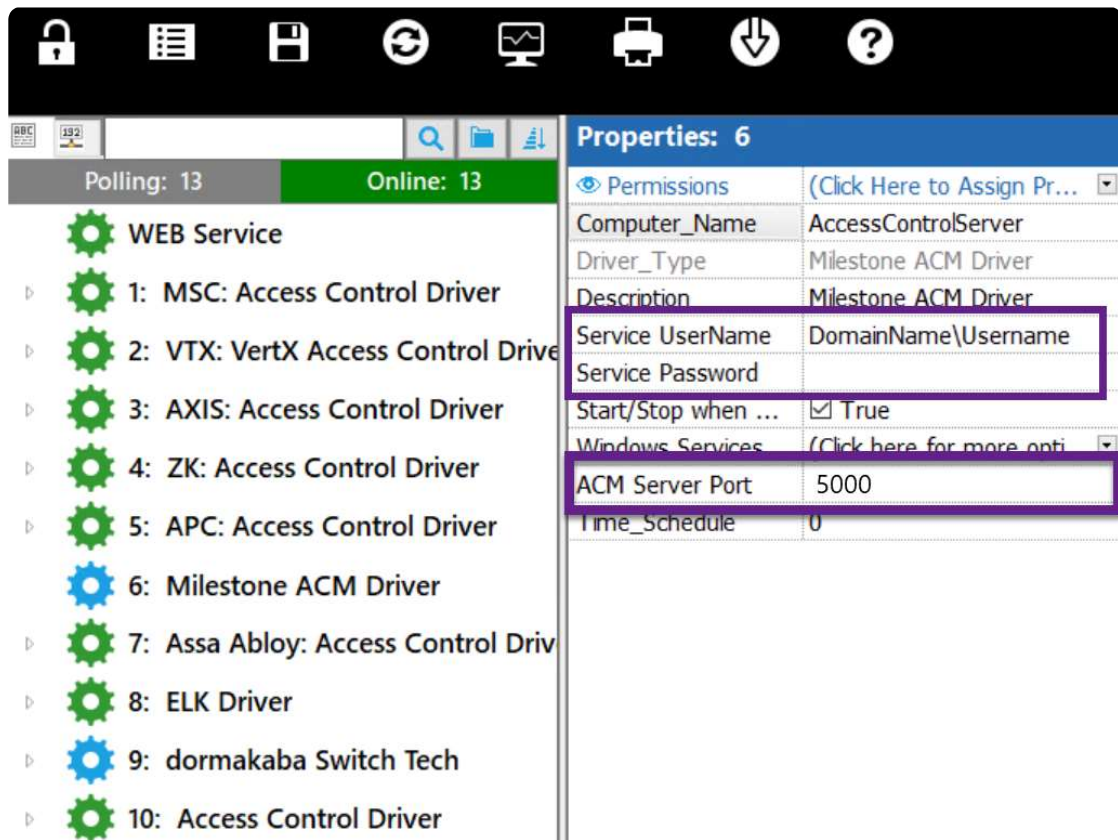
Click on the newly added Milestone ACM Driver to view the properties pane and then change the following: (See Figure 4)

*Service Username:* Enter the Windows User Account used to start the other IMRON Services (must be Admin)

*Service Password:* Enter the password for the Windows User Account

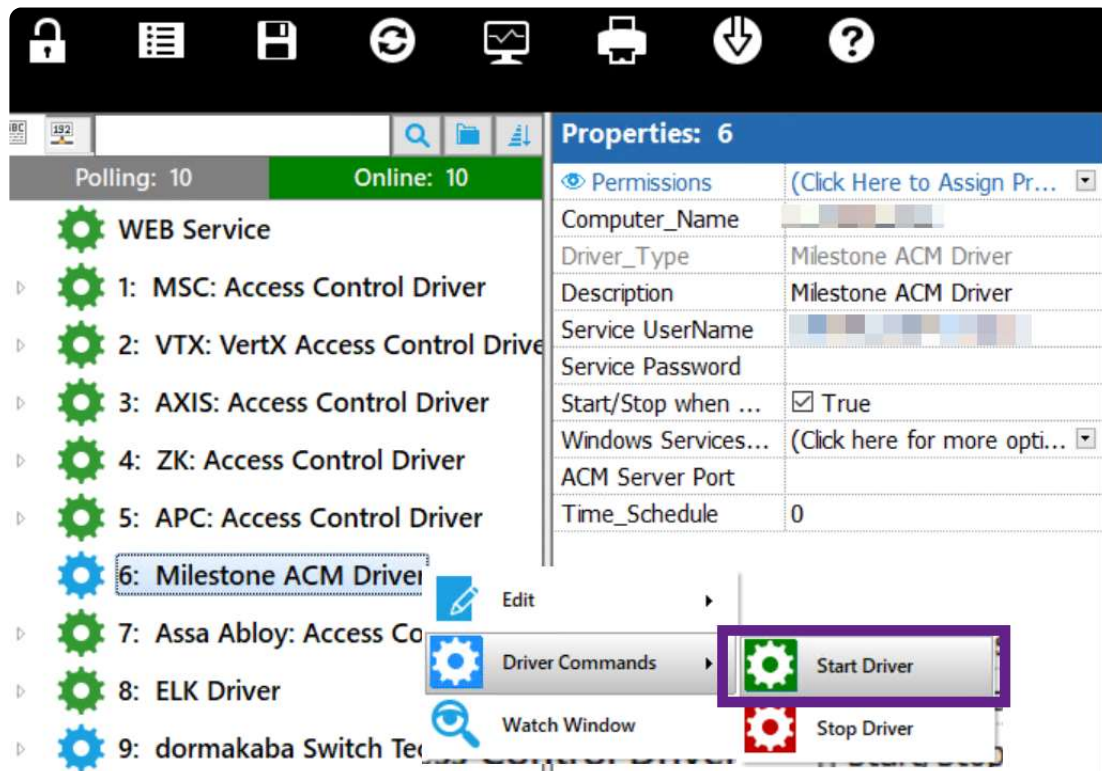
*ACM Server Port:* 5000

Figure 4:



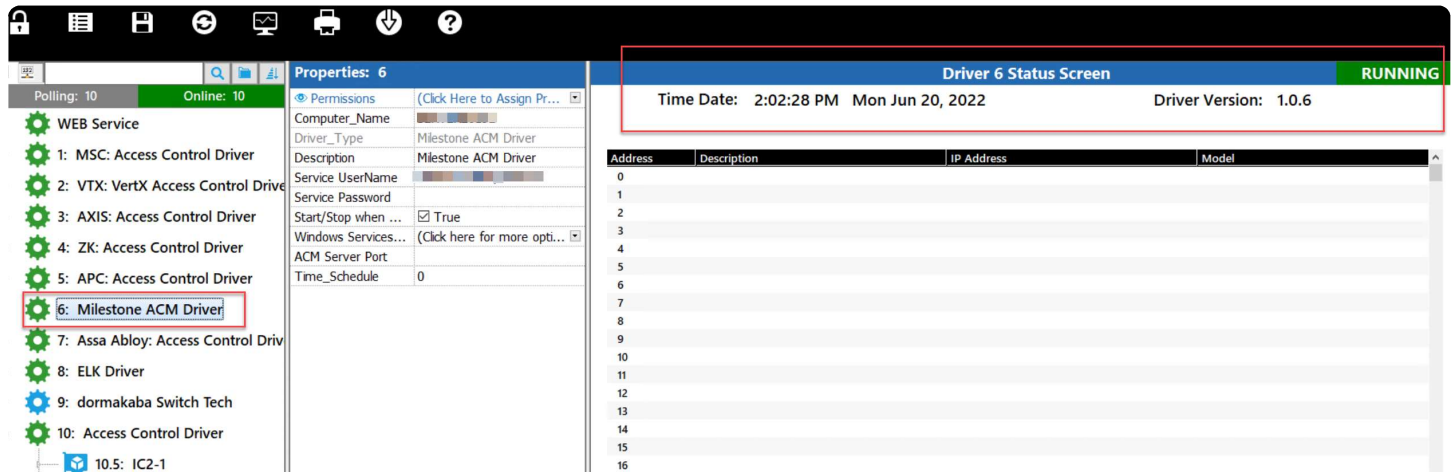
Right-click on the 'Milestone ACM Driver' driver and select 'Driver Command'. Click on 'Start Driver'. (See Figure 5)

Figure 5:



The Driver Status Screen should display 'RUNNING', current Date, Time Date and DLL Version. (See Figure 6)

Figure 6:



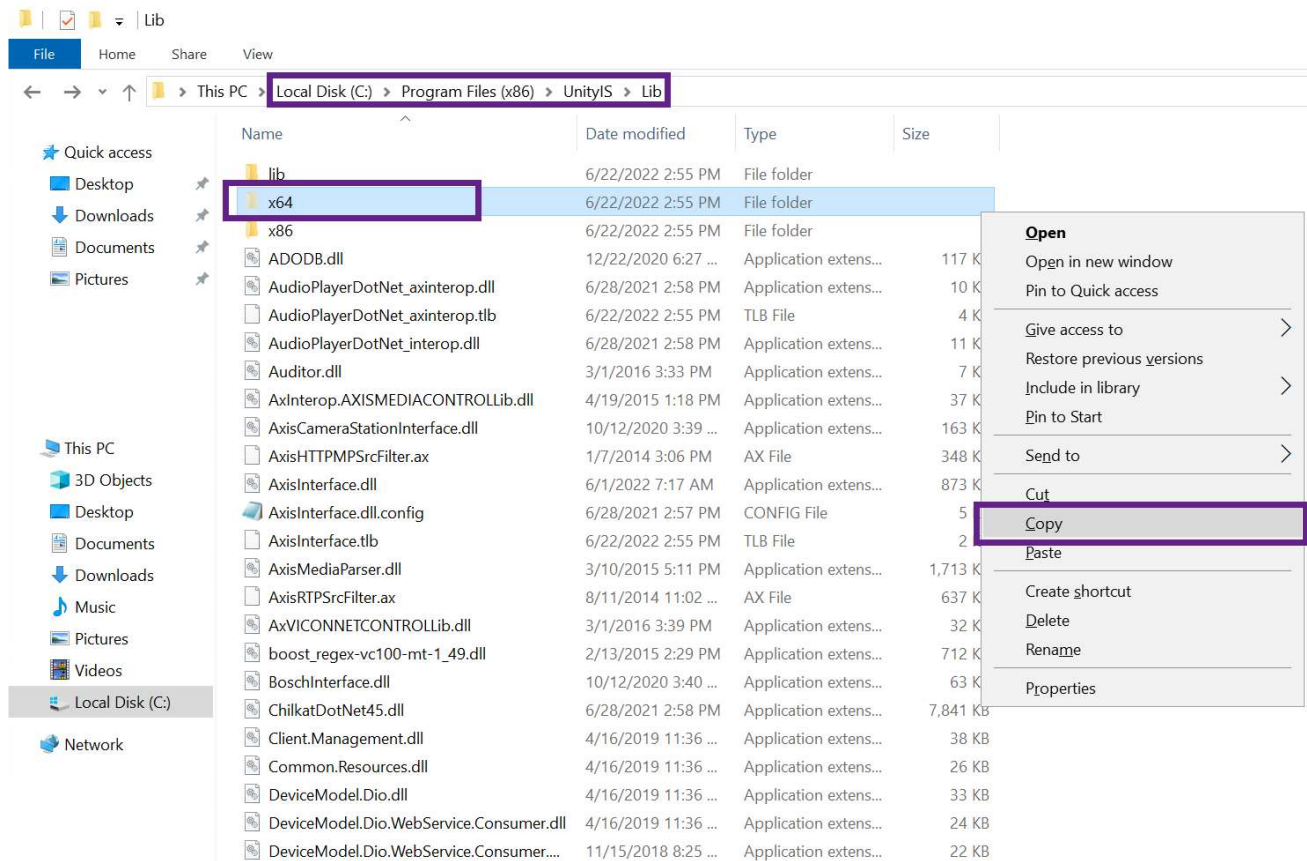
### III. Installing and Configuring the Milestone ACM Plugin

On the UnityIS Server, open Windows File Explorer and navigate to the UnityIS installation folder (Typically: '**C:\Program Files (x86)\UnityIS**').

Copy the 'x64' folder. (See Figure 7)

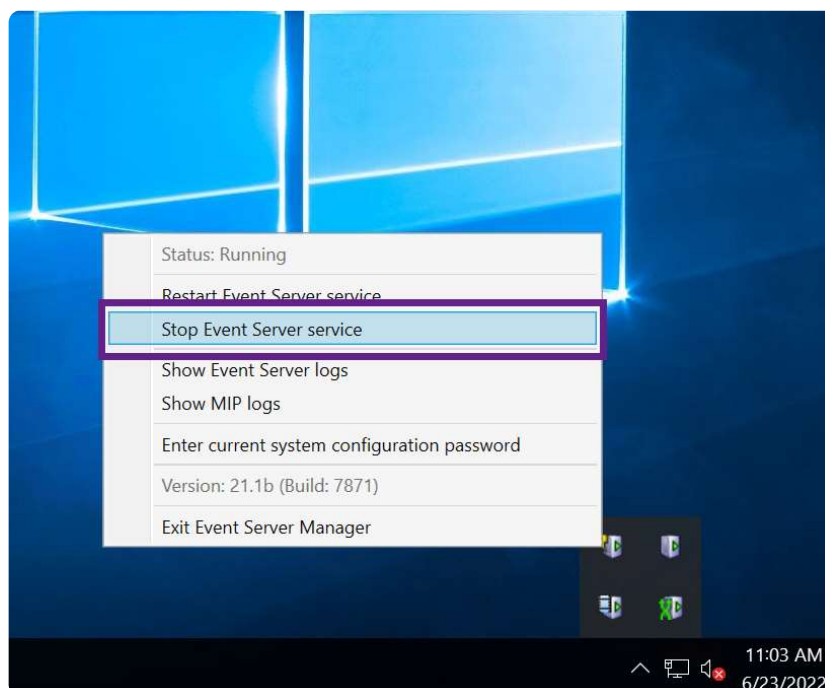
Figure 7:





Log into the Milestone VMS Server and stop the 'Milestone Event Server'. (See Figure 8)

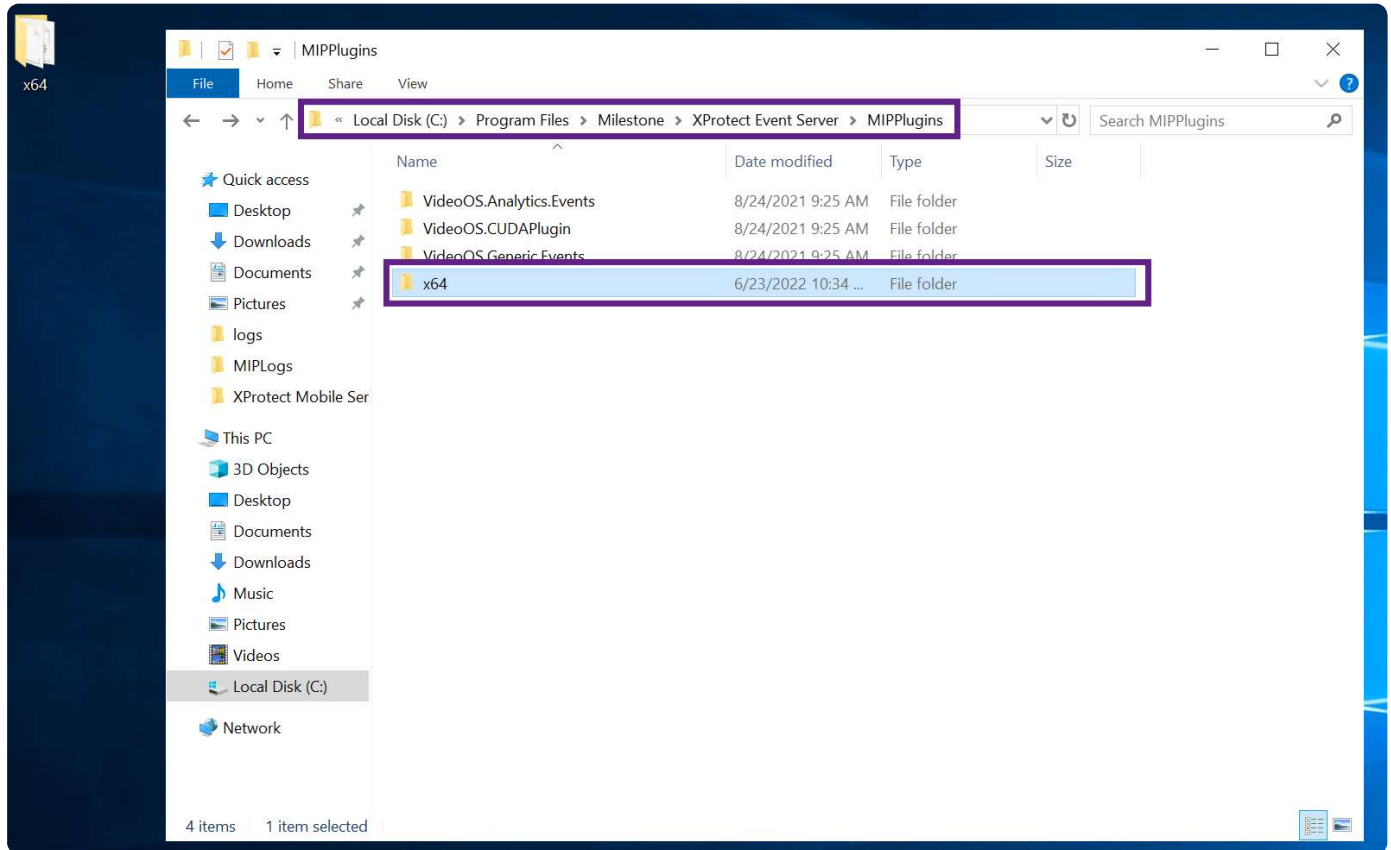
Figure 8:





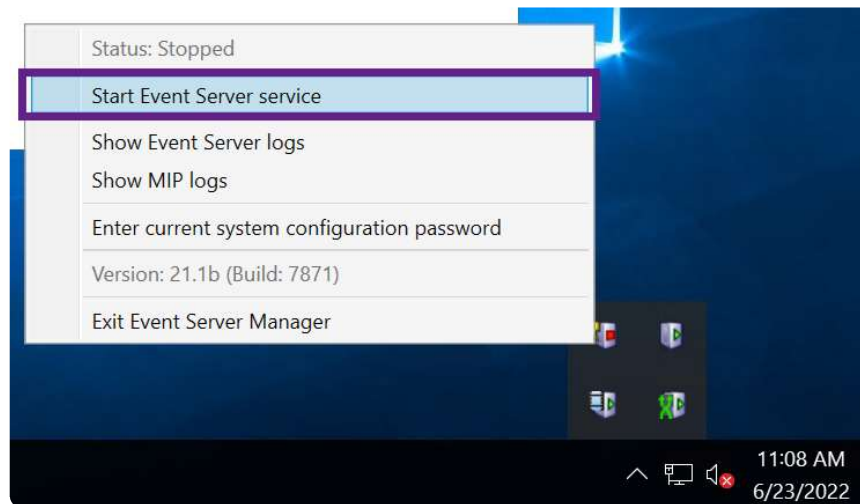
Open Windows File Explorer and navigate to the Milestone 'MIPPlugins' folder (Typically found in '*C:\Program Files\Milestone\XProtect Event Server\MIPPlugins*') and paste the 'x64' folder. (Due to Windows Permissions, you may have to paste the folder into the Desktop first and then copy and paste into the 'MIPPlugins' folder). (See Figure 9)

Figure 9:



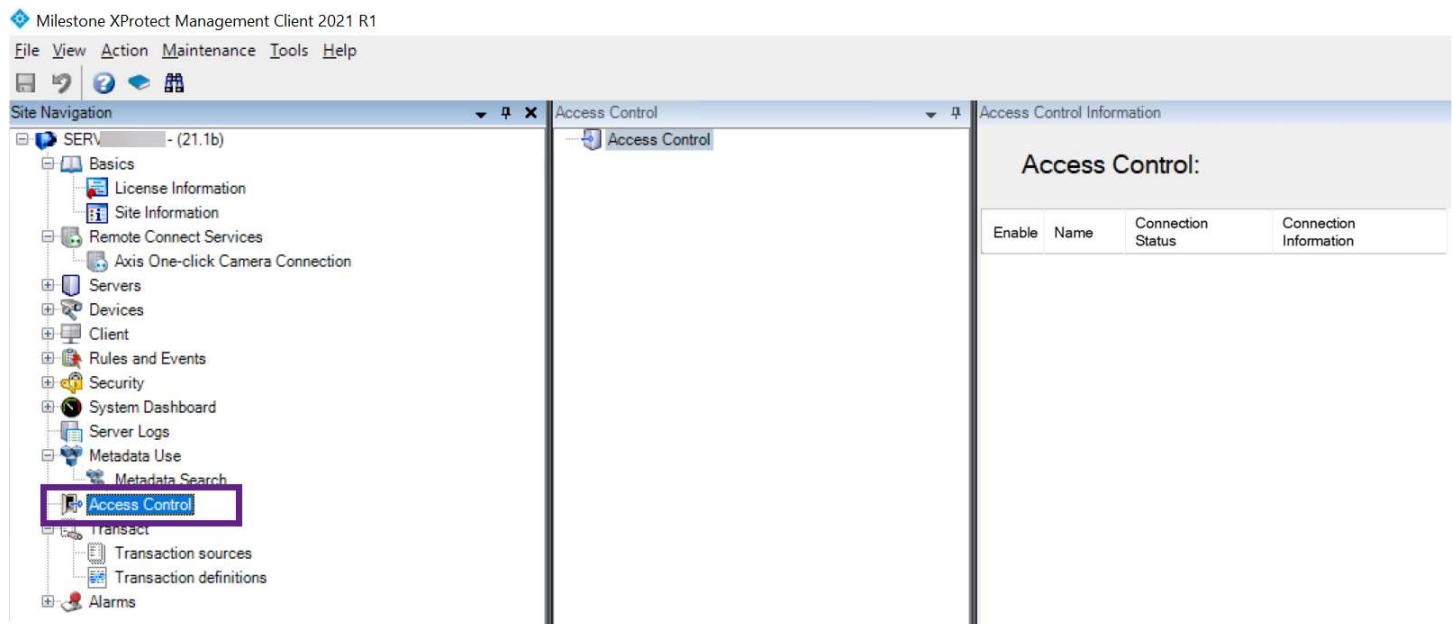
Start the Milestone XProtect Event Server . (See Figure 10)

Figure 10:



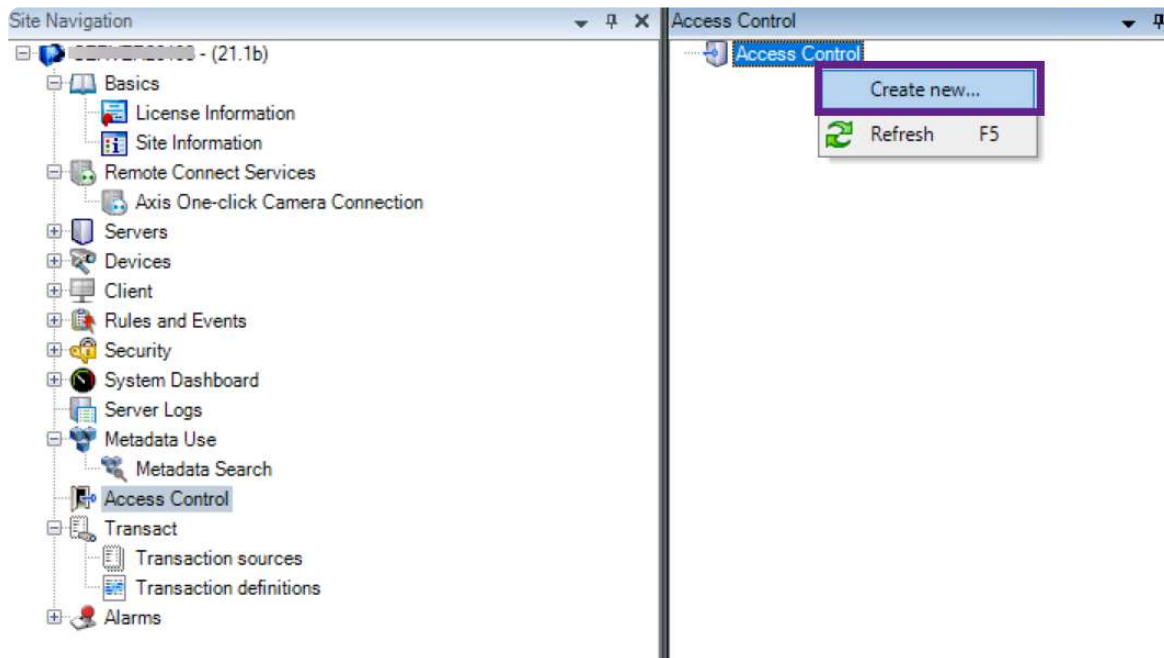
Launch the 'Milestone XProtect Management Client' and in the 'Site Navigation' list select 'Access Control' . (See Figure 11)

Figure 11:



In the 'Access Control' pane, right-click on 'Access Control' and select 'Create New'. (see Figure 12)

Figure 12:



The 'Create Access Control System Integration' window will open, enter the following:

Name: Specify a name for the integration. (ex: UnityIS ACM Integration)

Integration plug-in: Select 'ISMilestoneACM'

Server Address: Enter the IP address of the computer that is running the “Milestone ACM” Driver. (Typically: localhost)

Server Port: Enter “5000”

Debug Message: Leave Unchecked

Click 'Next'. (See Figure 13)

Figure 13:

## Create Access Control System Integration



## Create access control system integration

Name the access control system integration, select the integration plug-in and enter the connection details.

Name:	<input type="text" value="UnityIS ACM Integration"/>
Integration plug-in:	<input type="text" value="ISMilestoneACM"/>
Server Address:	<input type="text" value="192.168.0.1"/>
Server Port:	<input type="text" value="5000"/>
Debug Messages:	<input type="checkbox"/>

**Next**

Cancel

Once the scanning of the access control hardware is completed, click 'Next'. (See Figure 14)

Figure 14:

## Create Access Control System Integration



## Connecting to the access control system...

Collecting configuration data...



Configuration successfully received from access control system.

**Added:**

Doors (60)	▼
Units (409)	▼
Servers (1)	▼
Events (57)	▼
Commands (8)	▼
States (13)	▼

Previous

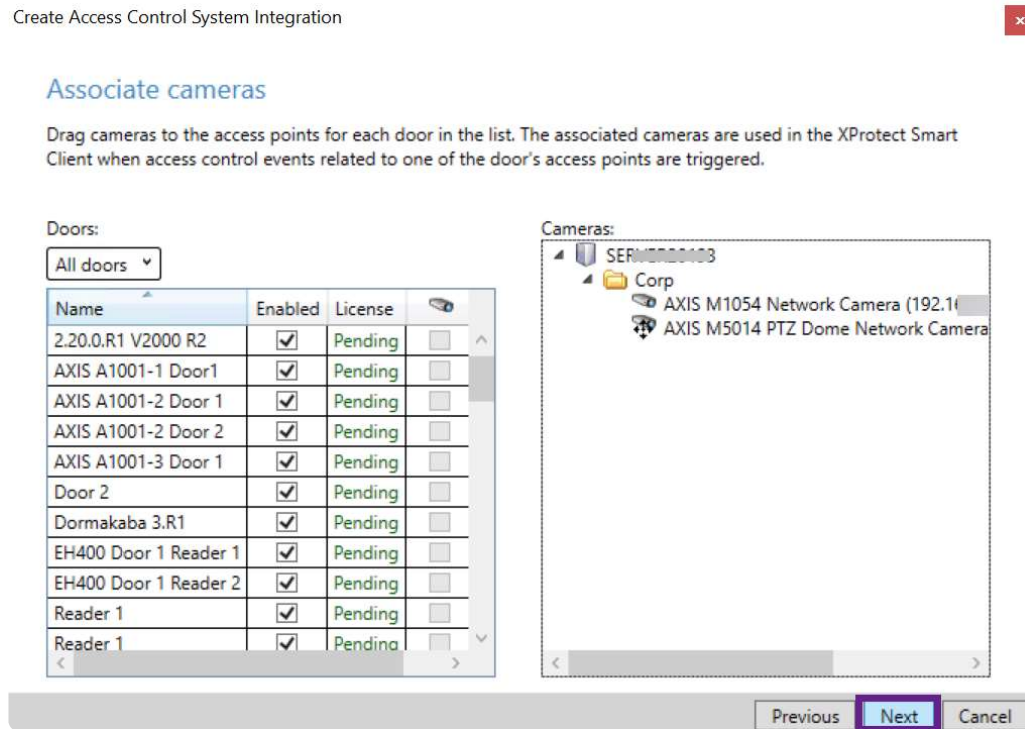
**Next**

Cancel

The next step is to associate cameras to doors by dragging the camera to the corresponding door. (This is not required)

Once completed, click 'Next'. (See Figure 15)

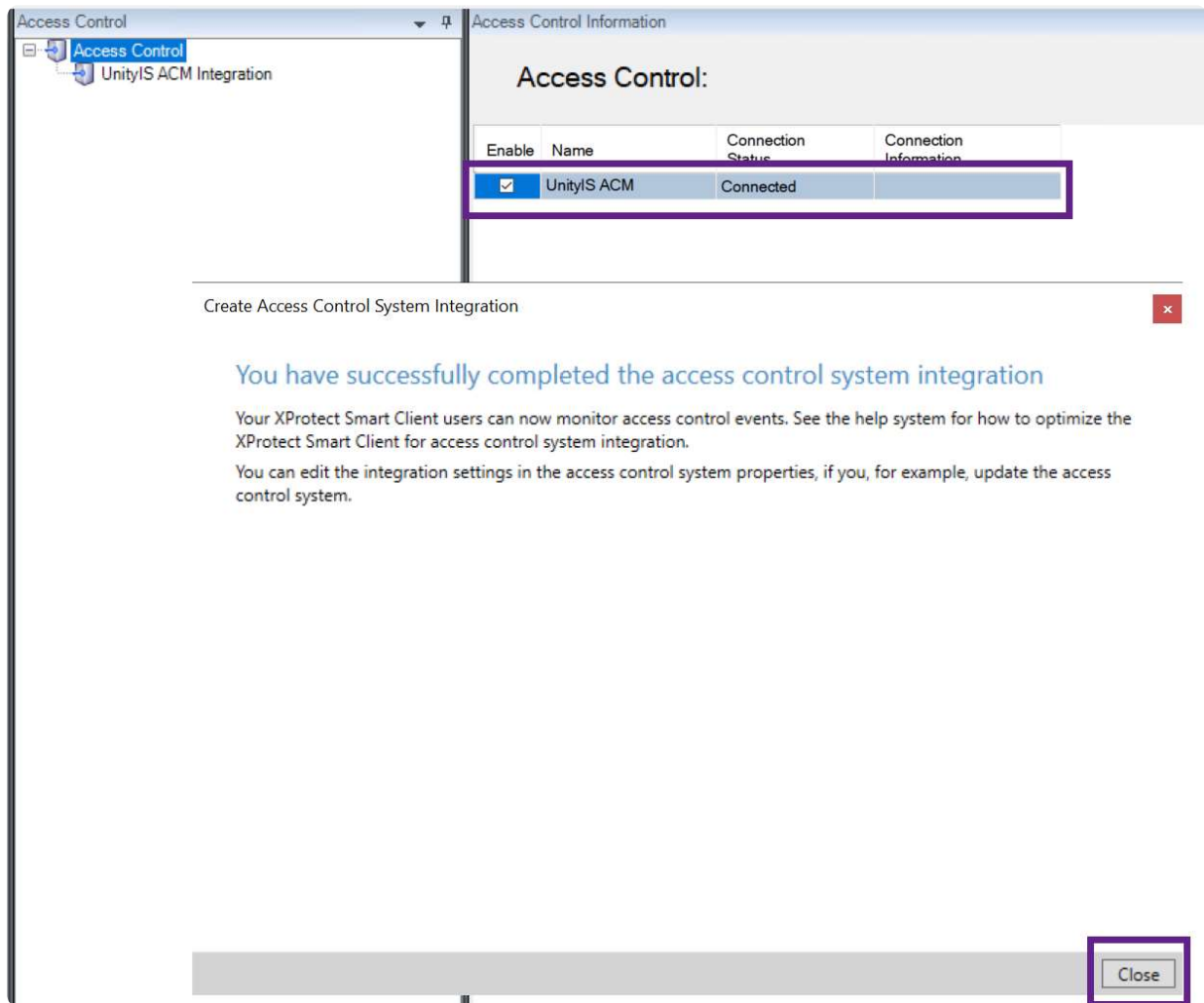
Figure 15:



The window will display a message verifying the Milestone/UnityIS integration has been completed.

The 'Connection Status' will be display 'Connected'. Click 'Close' to finish the ACM integration configuration. (See Figure 16)

Figure 16:



The UnityIS ACM integration is now complete. To verify that the integration is working:

- Launch the Milestone XProtect Smart client.
- Select the 'Access Control' module.
- Under 'Events' click on the 'All' dropdown menu and select 'Live Updates'.
- Present a valid card to a reader.
- You should now see an Access Granted event and video from the camera associated to the reader (if any). (See Figure 14)

Figure 14:



Milestone XProtect Smart Client

6/23/2022 4:54:01 PM

Live Playback Search Alarm Manager **Access Control** System Monitor

Access control administration

Events Doors Cardholders

Search cardholders

Today All events All doors

Access report

Time	Event	Source	Cardholder
6/23/2022 4:52:11 PM	Door is Locked	2nd Floor Entrance	
6/23/2022 4:52:05 PM	Door is Unlocked	2nd Floor Entrance	
6/23/2022 4:52:05 PM	Access Granted : Door Used 2nd Floor Entrance		Ryland Nunez
6/23/2022 4:51:50 PM	Door is Locked	East Entrance	
6/23/2022 4:51:50 PM	Access Granted : Door Used East Entrance		Eaton Aaron
6/23/2022 4:51:50 PM	Door is Unlocked	East Entrance	
6/23/2022 4:51:46 PM	Access Granted : Door Used South Entrance		Ryland Nunez
6/23/2022 4:51:46 PM	Door is Locked	South Entrance	
6/23/2022 4:51:46 PM	Door is Open	South Entrance	
6/23/2022 4:51:46 PM	Door is Closed	South Entrance	
6/23/2022 4:51:46 PM	Door is Locked	East Entrance	
6/23/2022 4:51:45 PM	Access Granted : Door Used Main Lobby		Ryland Nunez
6/23/2022 4:51:45 PM	Door is Locked	Main Lobby	
6/23/2022 4:51:45 PM	Door is Closed	Main Lobby	
6/23/2022 4:51:45 PM	Door is Open	Main Lobby	
6/23/2022 4:51:45 PM	Door is Locked	2nd Floor Entrance	
6/23/2022 4:51:44 PM	Access Granted : Verification Main Lobby		Ryland Nunez
6/23/2022 4:51:42 PM	Door is Unlocked	Main Lobby	
6/23/2022 4:51:42 PM	Access Granted : Verification South Entrance		Ryland Nunez
6/23/2022 4:51:42 PM	Door is Unlocked	South Entrance	
6/23/2022 4:51:40 PM	Access Granted : Door Used East Entrance		Eaton Aaron
6/23/2022 4:51:40 PM	Door is Unlocked	East Entrance	
6/23/2022 4:51:39 PM	Access Granted : Door Used 2nd Floor Entrance		Eaton Aaron
6/23/2022 4:51:39 PM	Door is Unlocked	2nd Floor Entrance	
6/23/2022 4:49:50 PM	Door is Locked	2nd Floor Entrance	
6/23/2022 4:49:44 PM	Access Granted : Door Used 2nd Floor Entrance		Ryland Nunez
6/23/2022 4:49:44 PM	Door is Unlocked	2nd Floor Entrance	
6/23/2022 4:49:38 PM	Door is Locked	2nd Floor Entrance	
6/23/2022 4:49:32 PM	Access Granted : Door Used 2nd Floor Entrance		Ryland Nunez
6/23/2022 4:49:32 PM	Door is Unlocked	2nd Floor Entrance	
6/23/2022 4:49:02 PM	Door is Locked	2nd Floor Entrance	
6/23/2022 4:48:56 PM	Access Granted : Door Used 2nd Floor Entrance		Ryland Nunez
6/23/2022 4:48:56 PM	Door is Unlocked	2nd Floor Entrance	

2nd Floor East Entrance - 6/23/2022 4:52:00.993 PM

Access Granted : Door Used  
Access Granted : Door Used

Time  
6/23/2022 4:52:05 PM

Source  
2nd Floor Entrance

Ryland Nunez

First Name  
Ryland

Last Name  
Nunez

Cardholder ID

Did this answer your question?

Yes

No