

SEE THE ENTIRE PICTURE WITH FORCE MULTIPLIER

- ☒ EMPOWER YOUR OPERATORS
- ☒ INCREASE UTILISATION
OF YOUR CCTV NETWORK
- ☒ MULTIPLY OPERATOR PRODUCTIVITY
- ☒ SEAMLESSLY TRACK MOVING TARGETS

Snap's video surveillance software makes large IP camera networks more efficient and effective.

The Challenge

To Create a Powerful and Seamless Camera Network.

Network Effect

Snap turns a fleet of isolated cameras into a powerful integrated network.

Operational Scalability

Without Snap, the risk is that more cameras can too often mean that operators are overwhelmed and unable to track targets – With Snap each additional camera adds value to the network.

Technical Scalability

Snap scales to even the largest video surveillance networks.

HOW FORCE MULTIPLIER WORKS

Force Multiplier automatically learns the relationships between all the cameras on a network, ie. the precise degree to which the camera views overlap one another or are adjacent to one another. Once these relationships are learnt, then tracking a target through a network becomes a matter of certainty.

MAKING SENSE OF SURVEILLANCE NETWORKS

The screen (below) demonstrates the Peripheral Vision feature of Force Multiplier. The current main video stream is shown in the context of neighbouring streams, providing situational awareness. These neighbouring streams act as a visual navigation menu allowing the user to switch the main view to follow the action as it moves around their site: Video Pursuit functionality. Just by following the action, staff can easily produce consolidated evidence videos of everything a suspect did when on site; it's video editing for security professionals.

Users of Force Multiplier can navigate through both live and archived streams, including both forwards and backwards in archives to aid forensic investigation - and from the safety of their desks, security personnel can perform virtual walkthroughs of remote sites to determine whether physical attendance is required.

MANAGING A MAJOR LIVE INCIDENT – USE MULTIPLE OPERATORS

Force Multiplier can simultaneously work in real time and on archived footage and with multiple operators. This powerful capability is valuable in managing major live incidents with several suspects. A major security breach in an airport for instance, can be worked on by several operators, some managing the present situation and some investigating what led up to it and whether there are any accomplices elsewhere.

FAST AND EASY PRODUCTION OF VIDEO EVIDENCE

Force Multiplier can automatically produce a comprehensive evidence video that follows the action from camera to camera. No more slow, painful and imprecise editing from separate video archives. Simply press 'record', then follow the action, then press 'stop' and you have a professional video for your archives or to pass onto police or other authorities.

INCREASED UTILISATION

Snap's Visual Navigation feature makes it easy. No matter how many cameras – even thousands – using Snap enables non-expert operators and other users in the organisation to effectively access the network.

EFFICIENT COLLECTION OF CAMERA RELATIONSHIPS

Working in the background, the companion Snap Network Intelligence engine automatically finds the relationships between surveillance cameras. Moves, adds and changes on camera networks are surprisingly commonplace; when they occur, Force Multiplier's Update feature discovers new and changed camera relationships without manual intervention, thus enhancing currency of the information whilst reducing operating cost. The Snap Network Intelligence engine provides scalability to thousands of cameras, ensuring customers don't outgrow their investment - and, like all of Snap's products, our software runs on leading VMS' and is camera agnostic, so Snap provides customers with new returns on their existing investment in camera fleet.

INSTANT EVIDENCE

Operators can record what they see in the main window as they follow the action, then instantly produce shareable video of everything they saw.

VISUALISATION

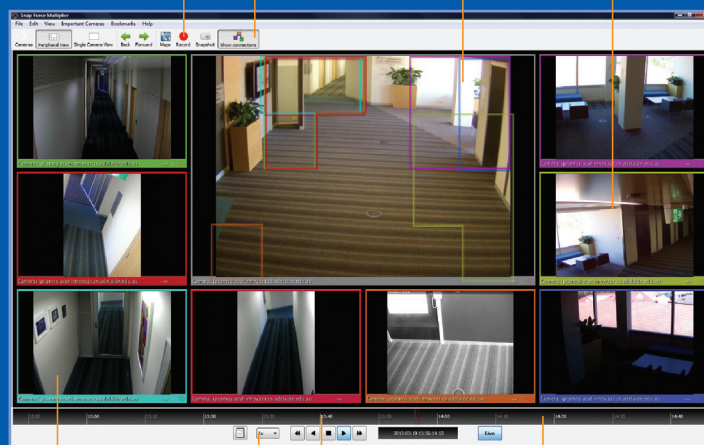
coloured outlines show how the peripheral cameras overlap with the main camera.

TOOLBAR

Icons with common functions; tooltips popup by hovering the mouse over.

VISUAL NAVIGATION

coloured outlines show how the peripheral cameras overlap with the main camera.



PERIPHERAL VISION

Cameras viewing areas overlapping or near the main camera view are shown so operators have an immersive view of the nearby space.

TIMELINE

shows the currently displayed time and allows seeking.

VIDEO PURSUIT

By navigating through recent footage at faster than real-time, operators can catch up with targets and direct responders to apprehend them.

CONTROL BAR

Control the speed and direction of playback, and active live streaming.

FOR MORE INFORMATION CONTACT:

SNAPCONTROL.COM