



REDUCE COSTS & IMPROVE CENTRAL STATION OPERATIONS

According to a recent McKinsey study, 78% of predictable physical activities can be automated. Are you getting the most out of our Central Station Operations?

Central Stations are often inundated with false positives, resulting in operators missing incidents from alert desensitization and increased costs from the need to hire more staff.

Actuate's Artificial Intelligence Intruder Detection Software filters false positives to reveal true positive detections – enabling your Central Station Operators to do more with less.

BENEFITS

REDUCE FALSE POSITIVES BY UP TO 99.7%

When compared with motion-based analytics, Actuate's AI model reduces false positives by 99.7% without any sacrifice in detection accuracy.

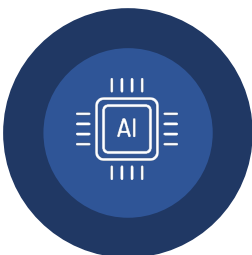


DRIVE COST SAVINGS THROUGH OPERATOR EFFICIENCY

Actuate's AI Model dramatically improves the "signal-to-noise" ratio, so operators can monitor a higher number of cameras, driving cost savings for your business

ENHANCED DISPATCHING OPERATIONS

Actuate ensures that incoming alerts are highly likely to be actionable, ensuring that guards / law enforcement are always dispatched to the right place at the right time to stop crimes in real-time.



CUSTOMIZABLE ADVANCED ANALYTICS

Whereas other false positive filtering solutions only perform simple human and vehicle detection, Actuate enables true exception driven monitoring – detecting threats such as firearms, crowds, loitering, and more.

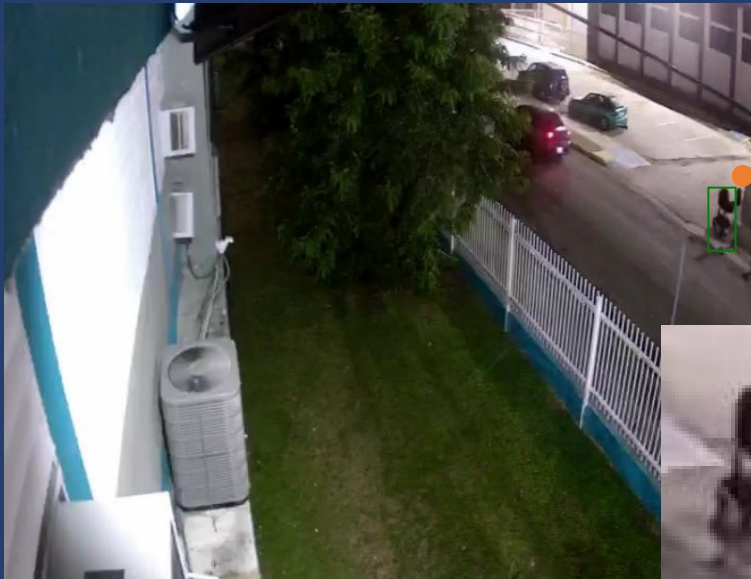
REDUCE HOURS SPENT ON FORENSIC REVIEW

Enable operators to rapidly search for and pull up frames of detected incidents, rather than browsing through recorded footage, saving dozens of operator-hours per month.



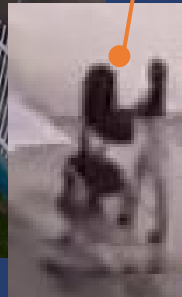
EXAMPLE DETECTIONS

Actuate can accurately trigger alerts that human operators often miss, enabling more effective remote monitoring and guard dispatching



(08/20/2020)

At first glance, this looks like a piece of abandoned furniture. However, Actuate's AI model accurately identified it as a person pushing a stroller.



(08/21/2020)

Actuate helped identify an instance where a potential intruder was blended in with the sidewalk and exceptionally difficult to observe