

# TRAFFIC ANALYTICS PLUGIN

Incoresoft VEZHA Milestone

## Table of Contents

<b>Plugin Features .....</b>	<b>4</b>
<b>Installation .....</b>	<b>5</b>
<b>Log In .....</b>	<b>8</b>
<b>Settings .....</b>	<b>9</b>
<b>Traffic - Analytics .....</b>	<b>10</b>
Analytics Search .....	10
Analytics Adding .....	10
Analytics Editing, Changing Status, Viewing, and Deletion .....	13
<b>Traffic - Statistics .....</b>	<b>15</b>

Traffic Analytics Plugin determines the level of traffic on the roadway, sidewalks for cars and pedestrians, as well as the intensity of movement of people in the mall.

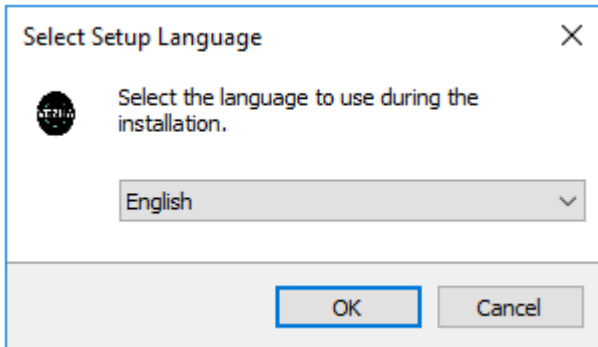
## **Plugin Features**

- Prevention of traffic jams or excessive congestion of people formation on roads and infrastructure facilities.
- Forecasting of streets, roads, or areas load depending on the time of day, a season, or day of the week.
- Determinations of optimal routes for the couriers, transport, or personnel transportation movement to minimize the risk of a hit in traffic jams.
- Determinations of supermarkets, shopping centers passability level.

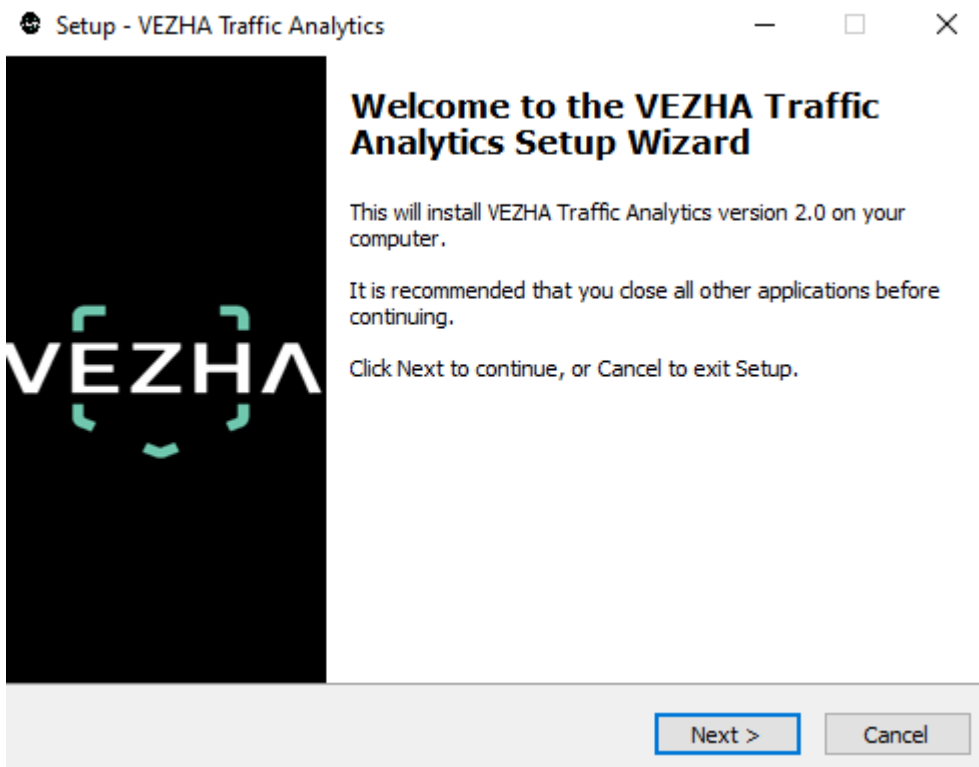
## Installation

Launch the installer by double-clicking on the downloaded file **VEZHA\_Traffic-Analytics\_Setup**.

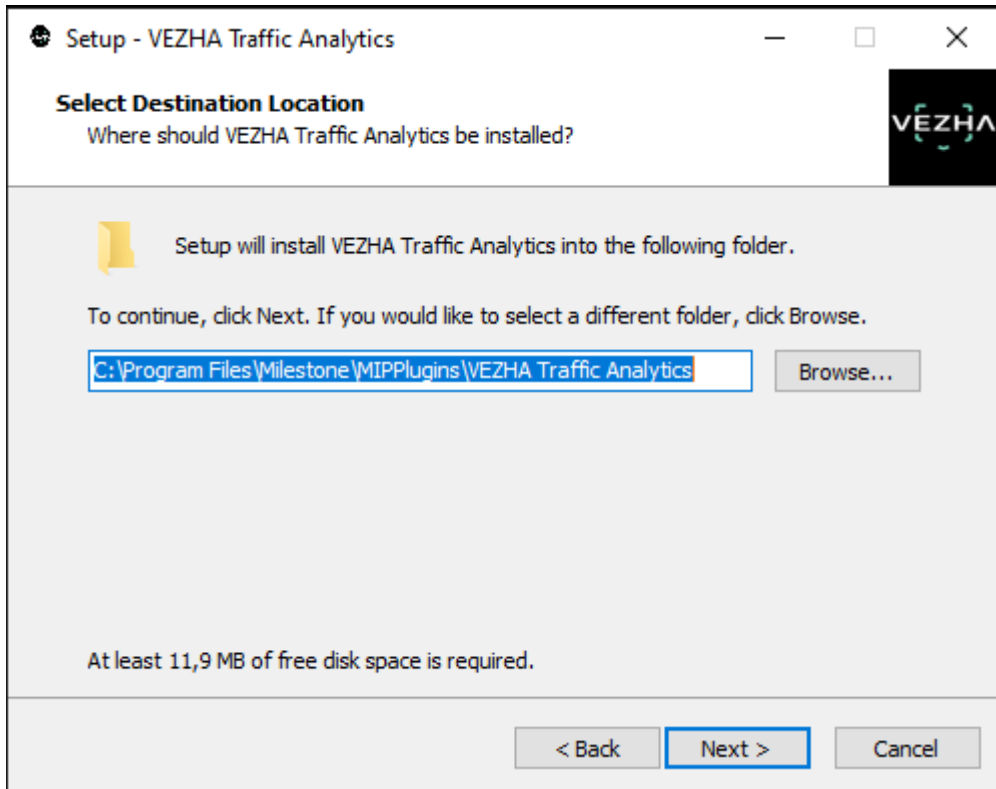
In the window that opens, select the language that will be used during the installation process. To go further, click **OK**. To abort the installation, click **Cancel**.



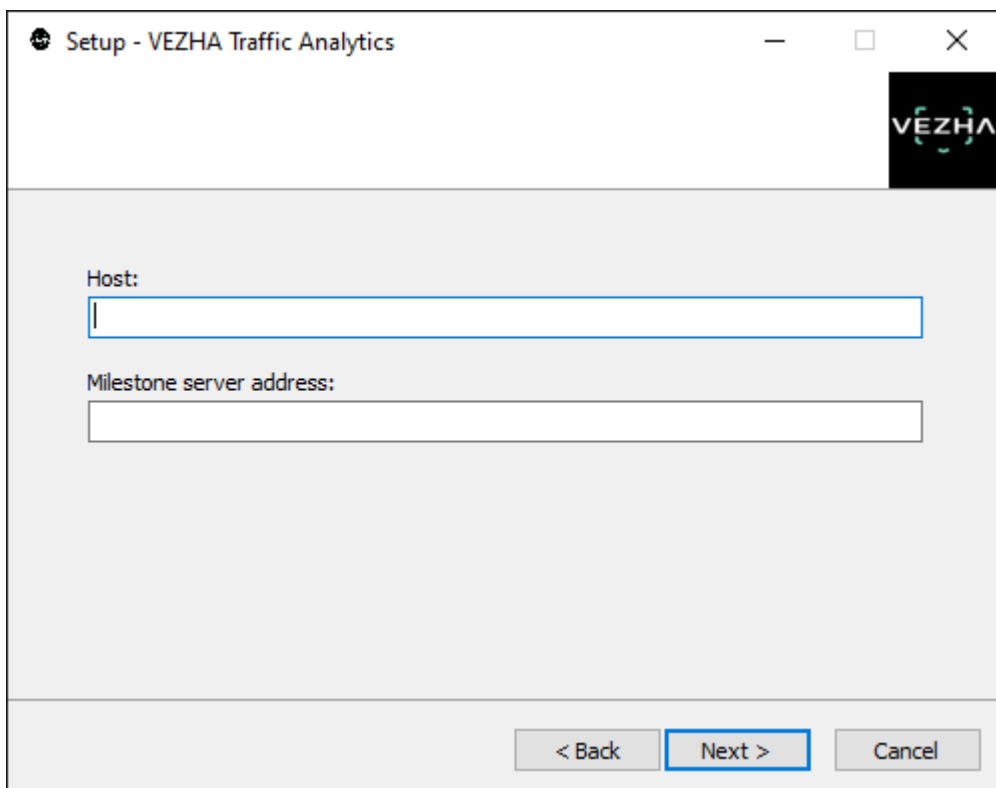
In the new window, read the installation recommendations and click **Next** to continue the installation, or the **Cancel** button to abort the installation.



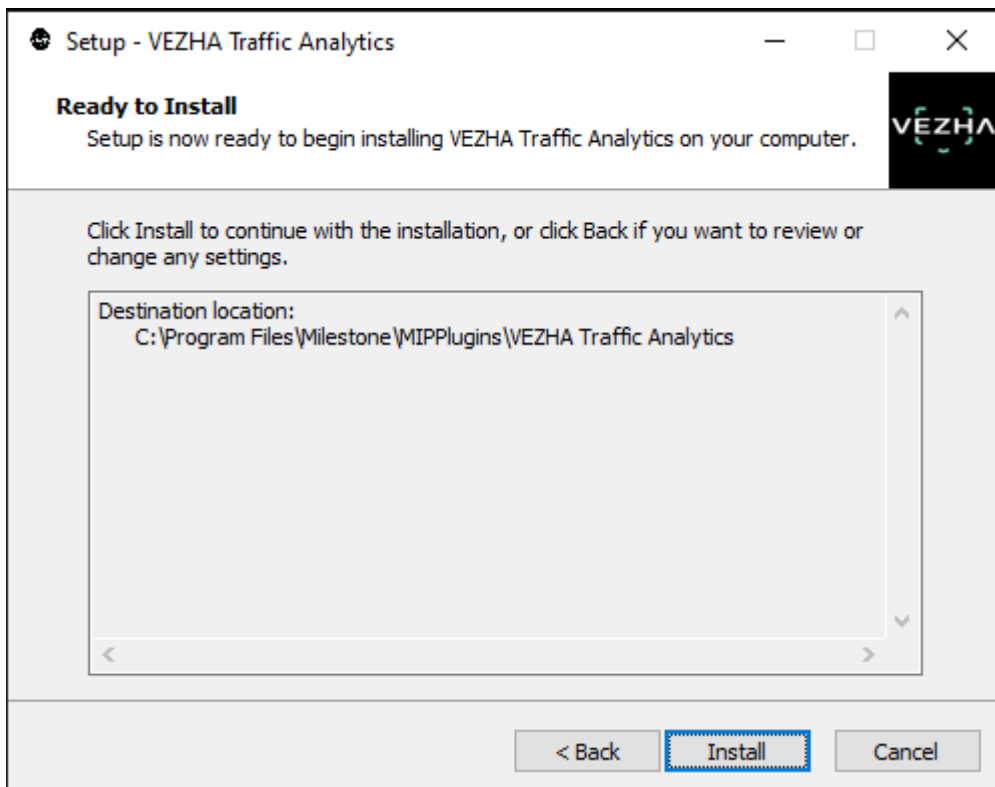
In the **Select Destination Location** window using the **Browse** button, specify the location where you want to install the plugin. The plugin must be installed in the **Milestone** folder with other plugins. After selecting the desired folder, click **Next** to continue the installation or **Cancel** to abort the installation.



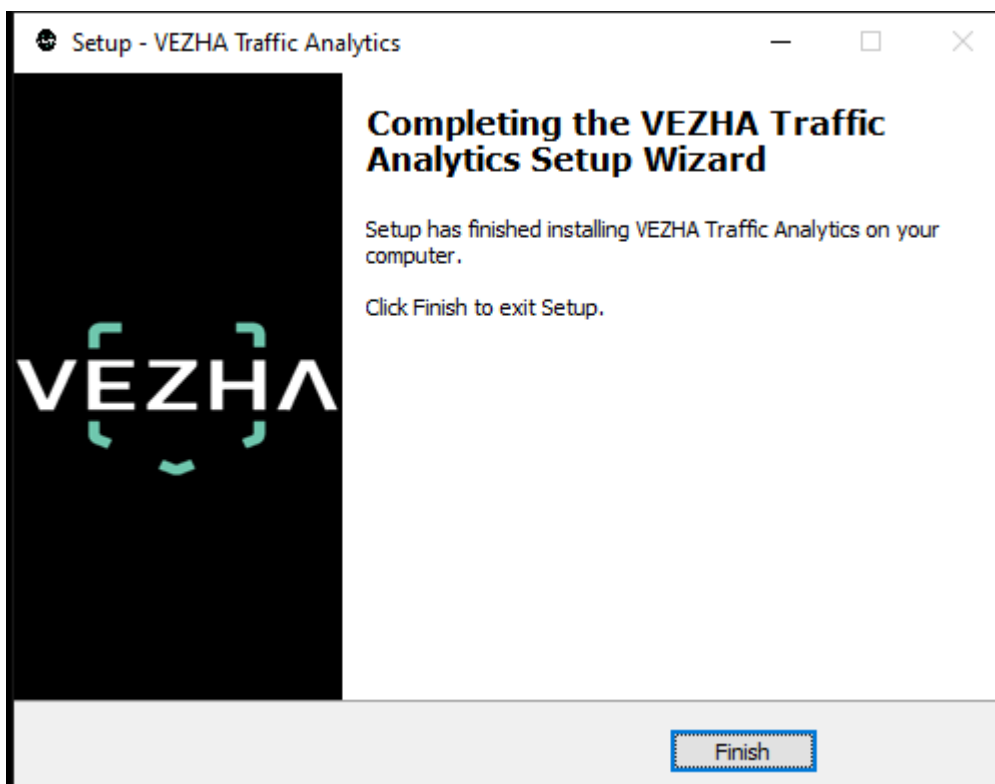
In this window, for the program to work correctly, you need to fill in all the fields correctly and click **Next** to continue the installation or **Cancel** to abort the installation.



Click **Install** to start the installation.

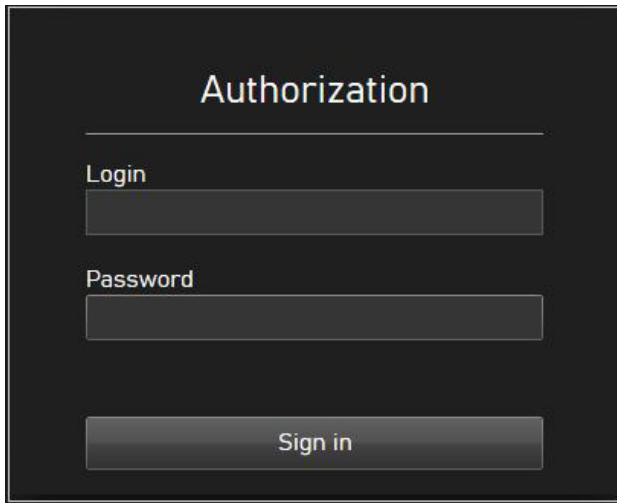


After the installation is completed, click **Finish**.



## Log In

To enter the system you need to go through authorization. To do this, enter the **Username** and **Password** in the appropriate fields of the modal window and click **Login**.



The image shows a dark-themed modal window titled "Authorization". It contains two input fields: "Login" and "Password". Below these fields is a button labeled "Sign in".

### Authorization

Login

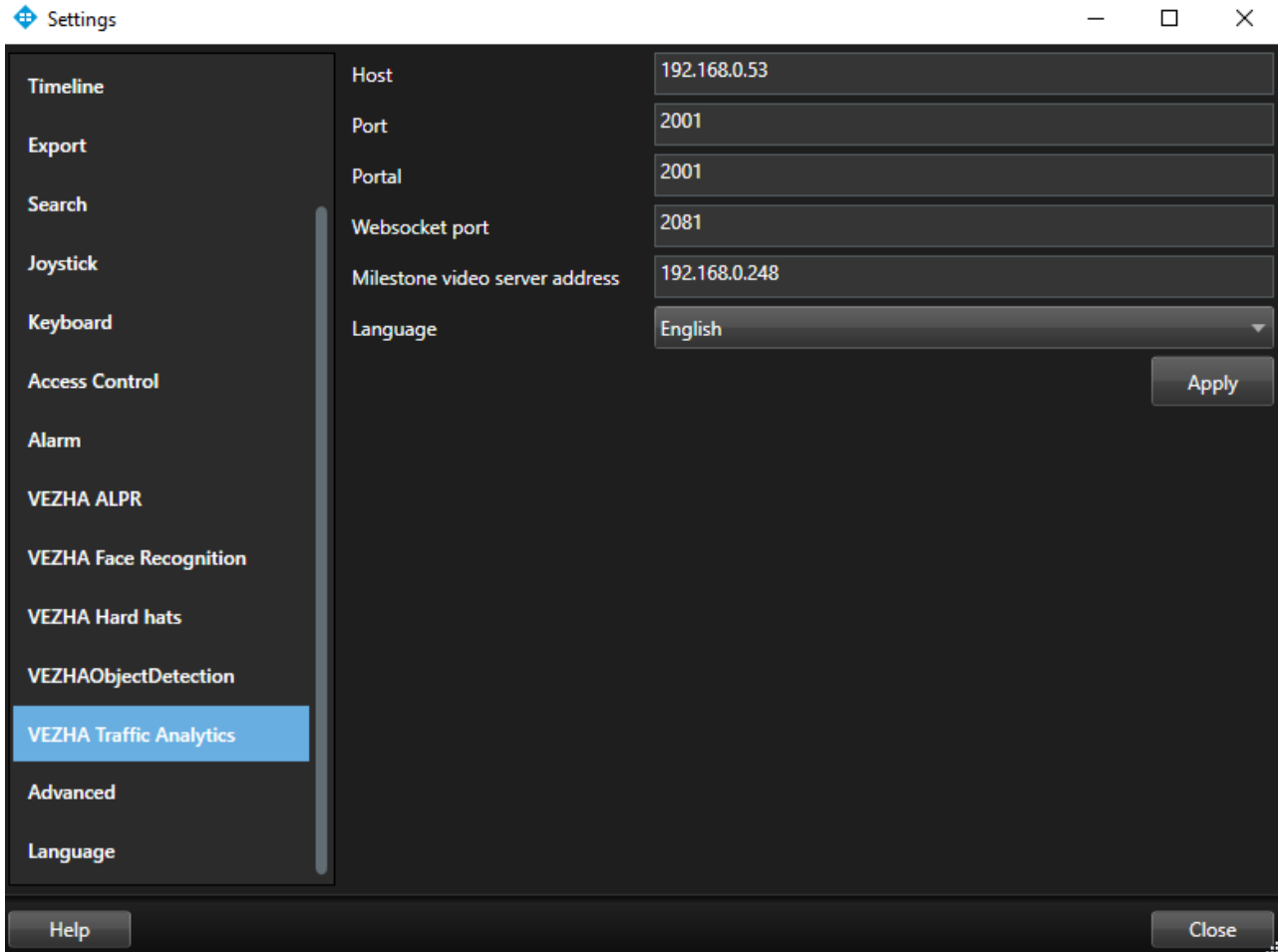
Password

Sign in

## Settings



In way to find **VEZHA settings** click the icon in the upper right corner of the screen. Choose and click **Settings**. In the opened window choose **VEZHA Traffic Analytics**.



To change the server settings in the **VEZHA Traffic Analytics** tab, you can edit the following fields: **Host**, **Port**, **Portal**, **Websocket port**, **Milestone video server address**.

To change the language, use the **Language** field and select from the list the most convenient for you.

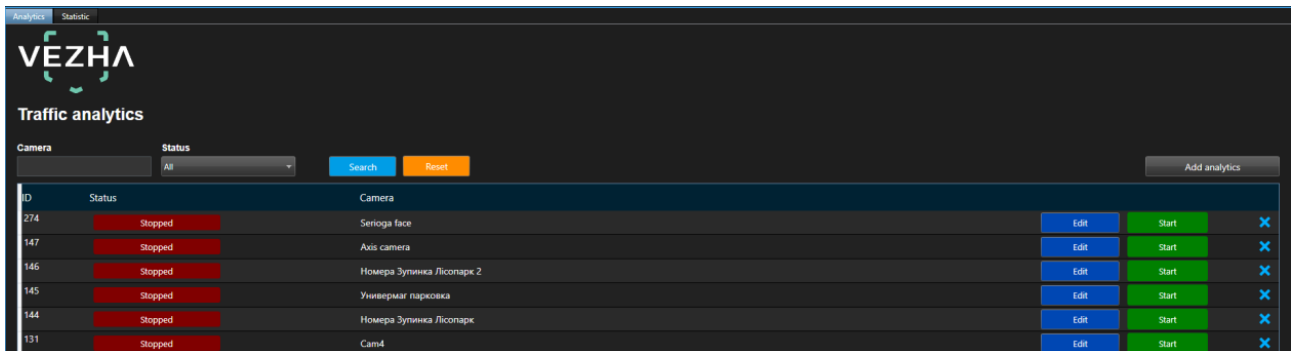
To save the changes, click **Apply** and restart the plugin.

### User Guide Contents:

- [Traffic - Analytics](#) (see page 10)
- [Traffic - Statistics](#) (see page 15)
- [Plugin Features](#) (see page 4)
- [Installation](#) (see page 5)
- [Log In](#) (see page 8)
- [Settings](#) (see page 9)

## Traffic - Analytics

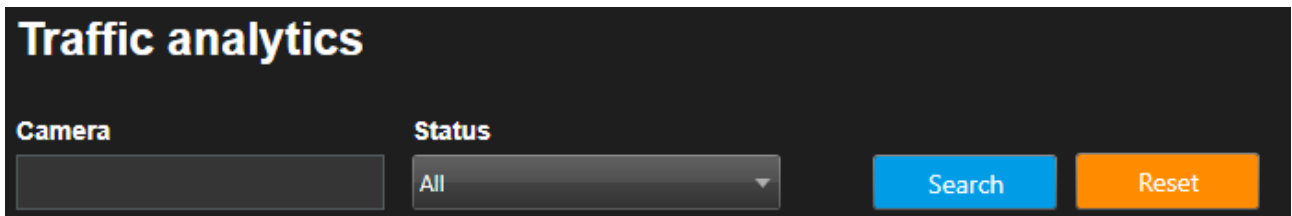
This tab is intended for adding, editing, viewing, deleting and changing the status of analytics.



ID	Status	Camera			
274	Stopped	Senoga face	Edit	Start	X
147	Stopped	Axis camera	Edit	Start	X
146	Stopped	Номера Зупинки Лісопарк 2	Edit	Start	X
145	Stopped	Універсал парковка	Edit	Start	X
144	Stopped	Номера Зупинки Лісопарк	Edit	Start	X
131	Stopped	Cam4	Edit	Start	X

## Analytics Search

At the top of the screen, search fields are located.



**Traffic analytics**

Camera:

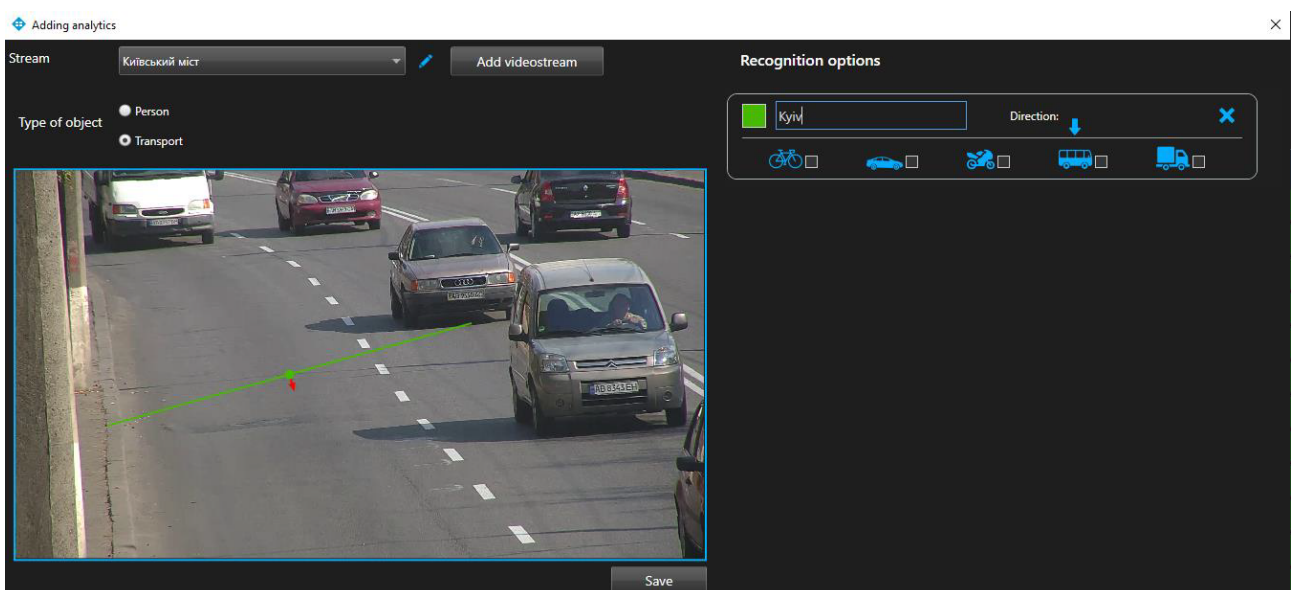
Status:

To find the desired analytics, enter the name or status of the analytics.

To start the search, click the **Search** button. To clear the search fields click **Reset**.

## Analytics Adding

To add new traffic analytics, click Add analytics in the upper right corner of the screen. In the window that opens, fill in the fields:



**Adding analytics**

Stream:

Type of object: ☒ Person ☐ Transport

Recognition options:  Direction:

☐ ☐ ☐ ☐ ☐

FIELD NAME	DESCRIPTION
<b>Stream</b>	Click on the field and select a camera name from the drop-down list. The video stream will be used to create analytics.
<b>Type of Object</b>	Select the type of object (person or vehicle) to track traffic.

Add lines to the workspace. This feature allows you to track traffic objects. To add a line you need:

1. Add a camera into a field **Video Stream**. A video from the added camera will appear below the Video Stream field.
2. Add a line. In way to add a line:
  - Click on any point in the area where the video stream is located.
  - Click on another point again, after which a line will appear.
  - In order to add another line, repeat the points above.
  - Added lines are fixed in the fields on the right.
  - To delete a line, mouse over the field with the desired line and click on the delete icon in the line block.

You can track the traffic of two types of objects: **Transport** and **People**.

In order to track vehicle traffic, select the object type **Transport**.

In order to select the necessary type of transport, go to the added line and tick (**bicycle, car, motorbike, bus, truck**).

1. Enter a convenient **Name** for the line in order to know its purpose (the line counts the traffic of such objects).
2. To indicate the direction in which vehicles will be locked, click **Direction**. After clicking, in the work area, on the line, an arrow will appear that indicates the direction of movement. To change the direction of travel, click **Direction** again.
3. Click **Save** to save your changes.



In the way to edit video steam click right of the video stream.

In the way to create a new video stream click **Add video stream**.

In the opened window fill the next fields:

Traffic - Analytics - 12

<b>Name</b>	Enter the name of the video stream in the field. This field will be displayed in all components of the program that use video streams
<b>Username</b>	Enter the name of the current Milestone user in the field
<b>Password</b>	Enter the password of the current Milestone user
<b>Camera</b>	Select a camera from the drop-down list
<b>Camera Address</b>	Enter the address in the field, or select on the map below the location of the camera (drag the camera icon). The system will automatically determine the location coordinates
<b>Camera Direction</b>	Drag the slider to change the camera direction. Indication of camera rotation helps in determining the direction of movement of a person

In the way to save changes click **Apply**.

In the way to create analytics click **Save**.

## Analytics Editing, Changing Status, Viewing, and Deletion

To edit analytics, click the **Edit** button on the right side of the entry.

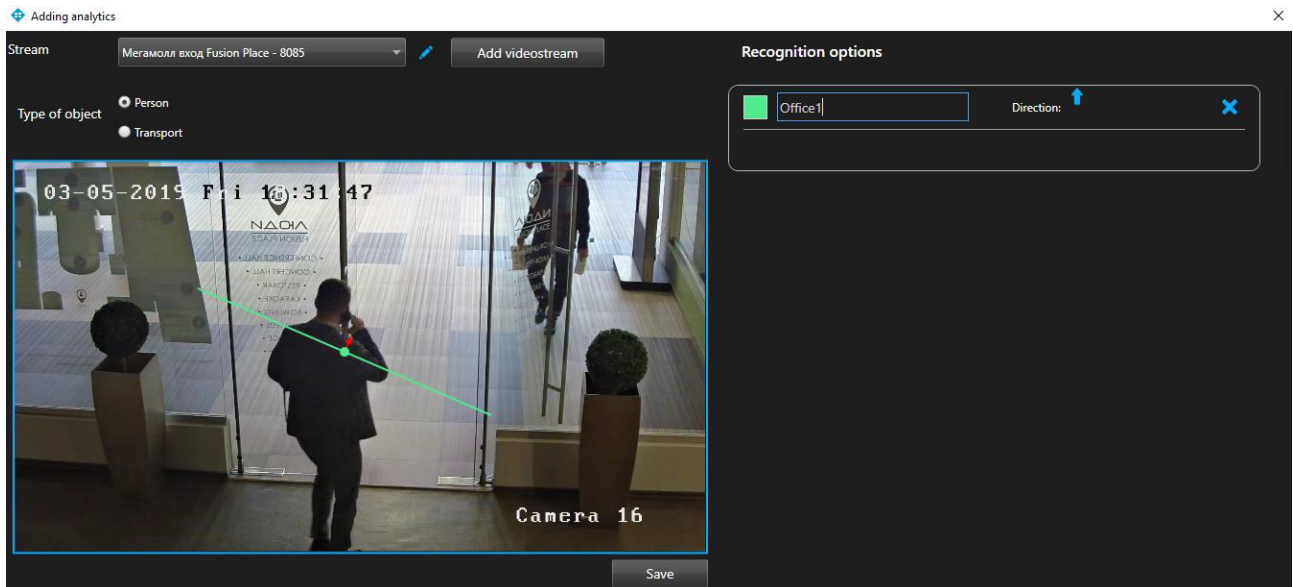
In the window that opens, fill the fields:

FIELD NAME	DESCRIPTION
<b>Type of Object</b>	Select the type of object (person or vehicle) to track traffic.
<b>Recognition Options</b>	Parameters used for recognition of selected objects.


To add a line:


- Click on any point in the area where the video stream is located.
- Click on another point again, after which a line will appear.
- In order to add another line, repeat the points above.
- Added lines are fixed in the fields on the right.
- To delete a line, mouse over the field with the desired line and click on the delete icon in the line block.

Click **Save**, in a way to save changes.



In the way to create analytics click Save. To start or stop analytics click **Start/Stop**.

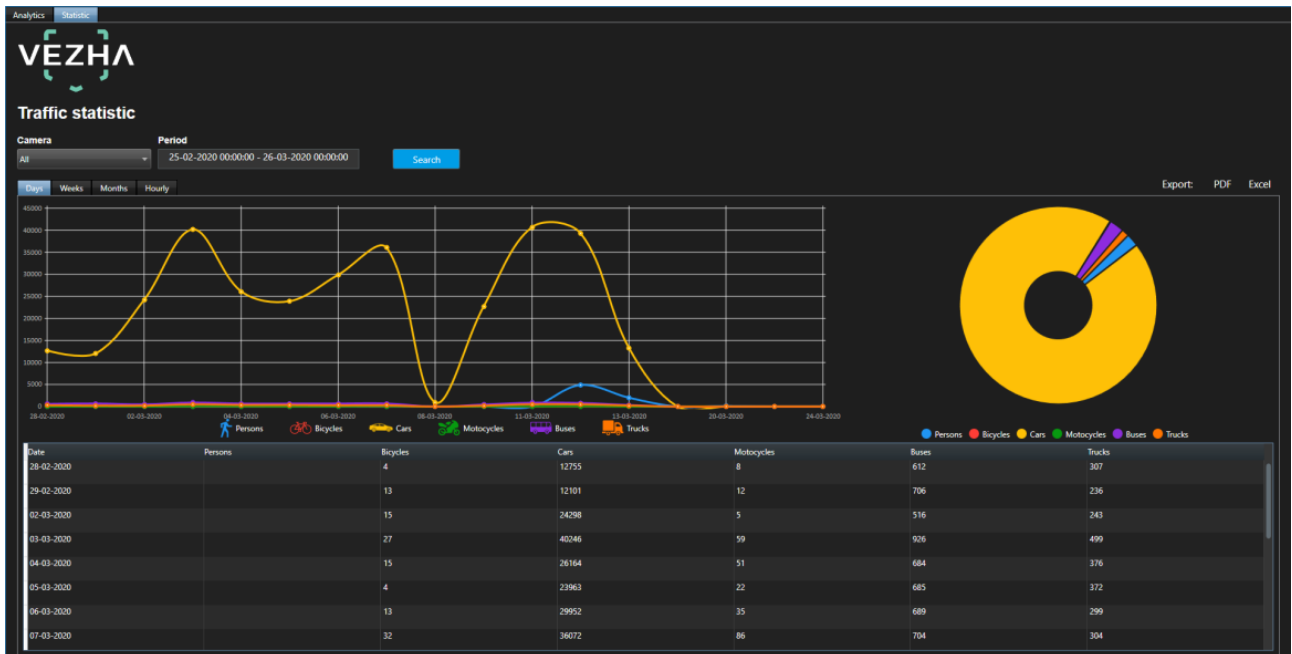
To delete analytics click the Delete icon .

To view analytics click view icon .

- [Analytics Search](#) (see page 10)
- [Analytics Adding](#) (see page 10)
- [Analytics Editing, Changing Status, Viewing, and Deletion](#) (see page 13)

## Traffic - Statistics

To work with Traffic Statistics, go to the **Statistics** tab.

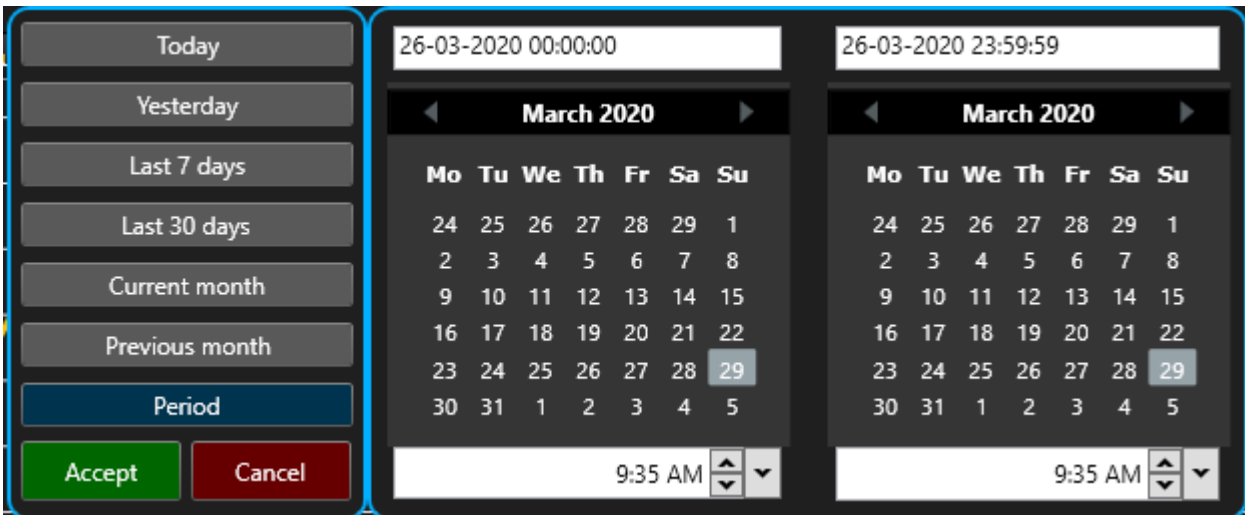


Traffic recognition statistics are developed to generate and create reports on the number of vehicles and people for the period.

In order to filter vehicle recognition statistics, it is necessary to:

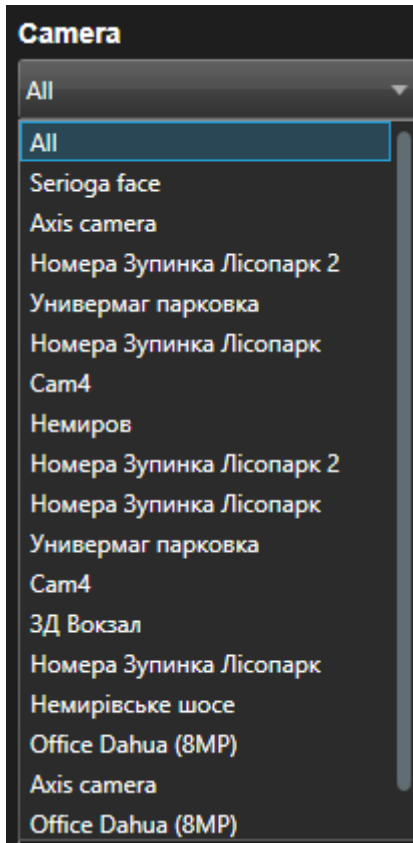
### 1. Choose a period of time for which statistics will be generated.

To select a period, one of the values is indicated: today, yesterday, the last 30 days, this month, the previous month, a manually selected period (using the calendar you can specify the range of days and time).

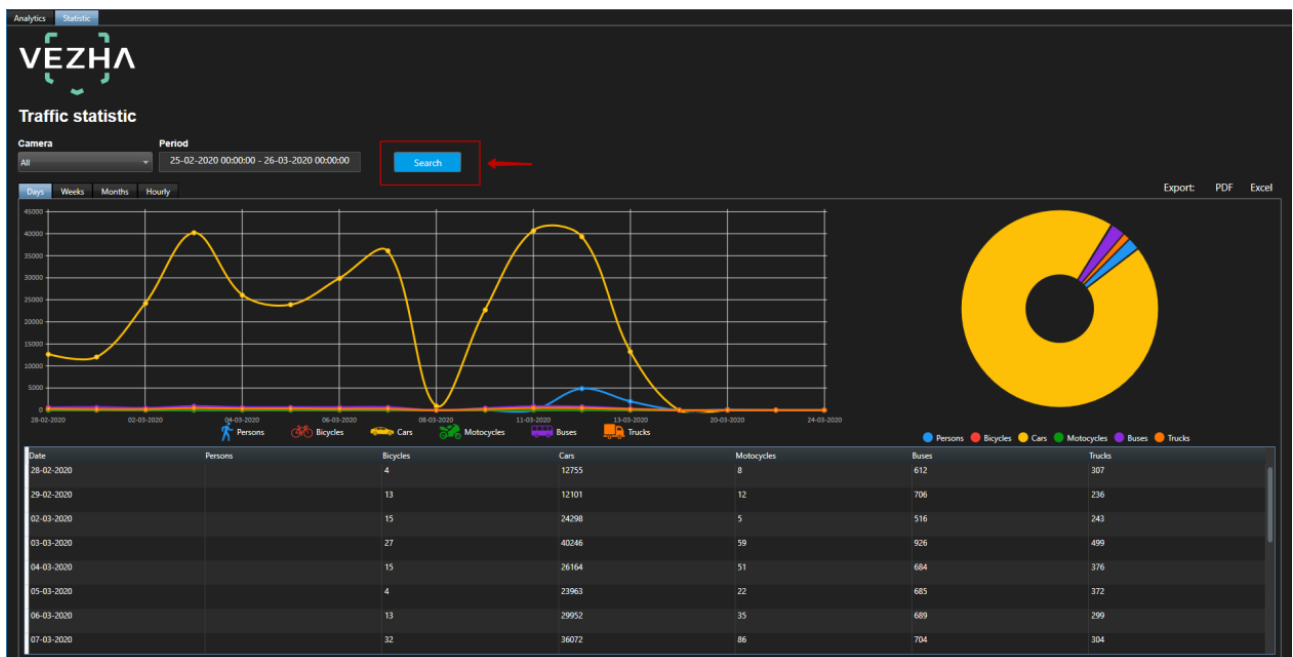


The screenshot shows the date and time selection interface. On the left is a sidebar with buttons for 'Today', 'Yesterday', 'Last 7 days', 'Last 30 days', 'Current month', 'Previous month', and a 'Period' button. Below these are 'Accept' and 'Cancel' buttons. The main area displays a calendar for March 2020, with the date '29' selected. Above the calendar are input fields for the start and end times, both set to '26-03-2020 00:00:00' and '26-03-2020 23:59:59'. Below the calendar is a time selector showing '9:35 AM'.

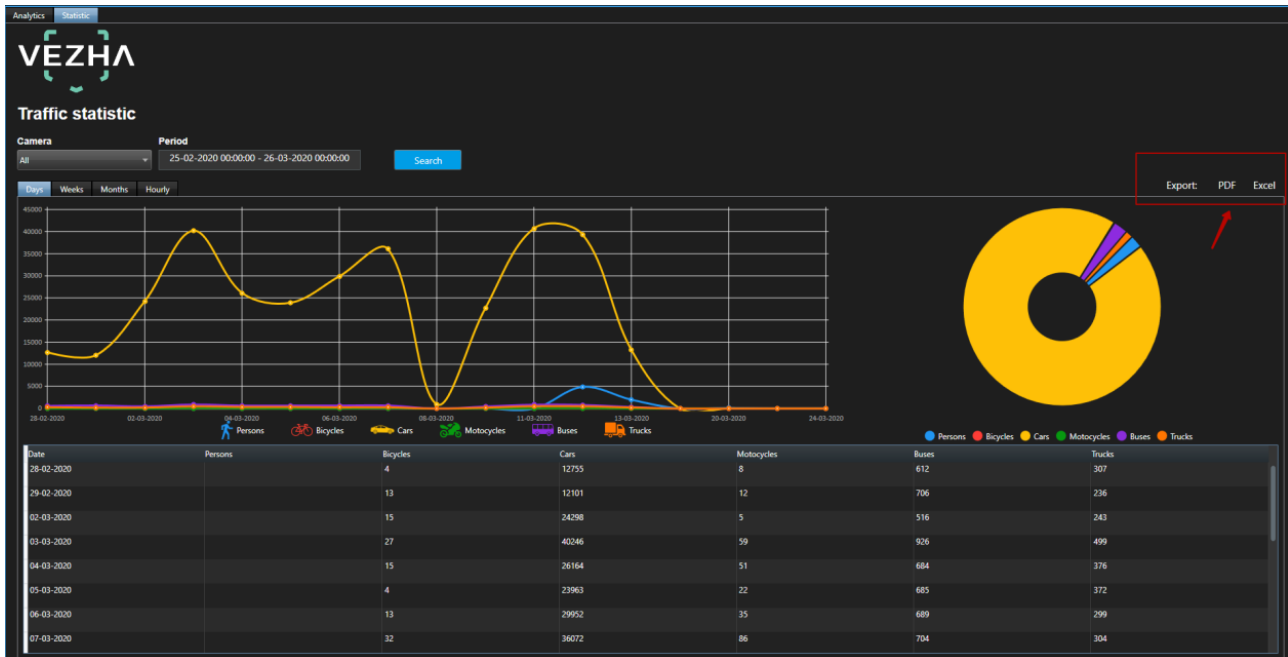
### 2. Select the camera with which the video stream is taken. You can select All cameras, or you can select a specific camera.



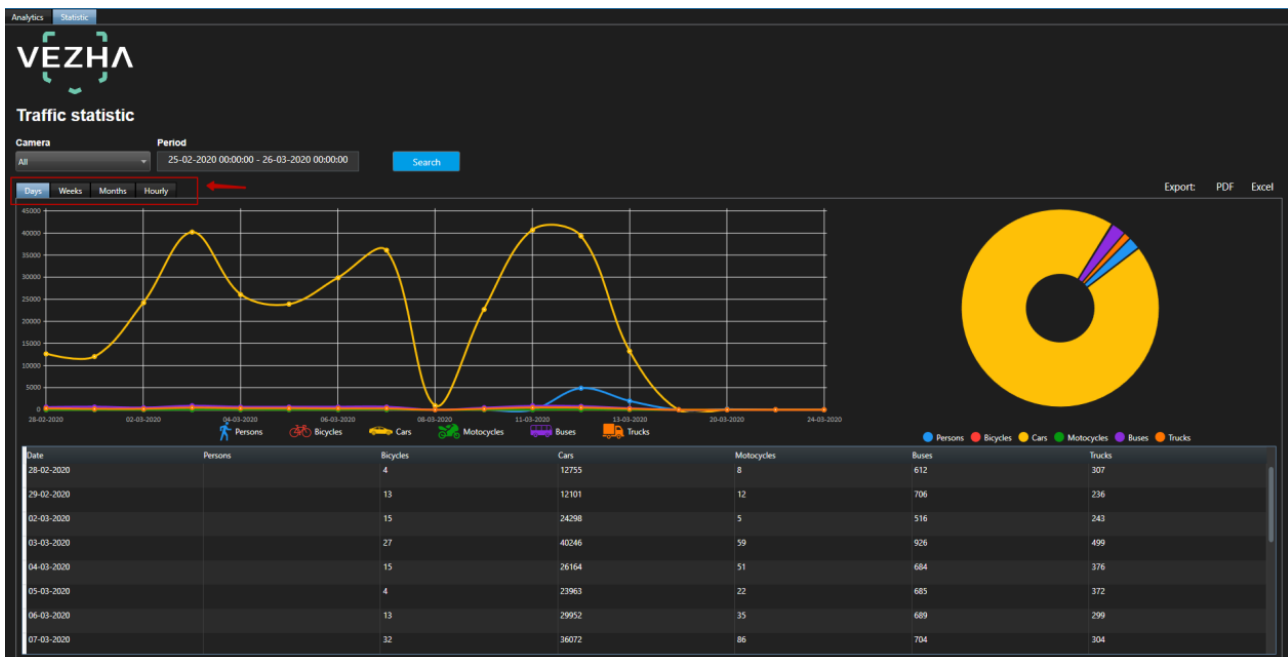
3. Click the Search button.



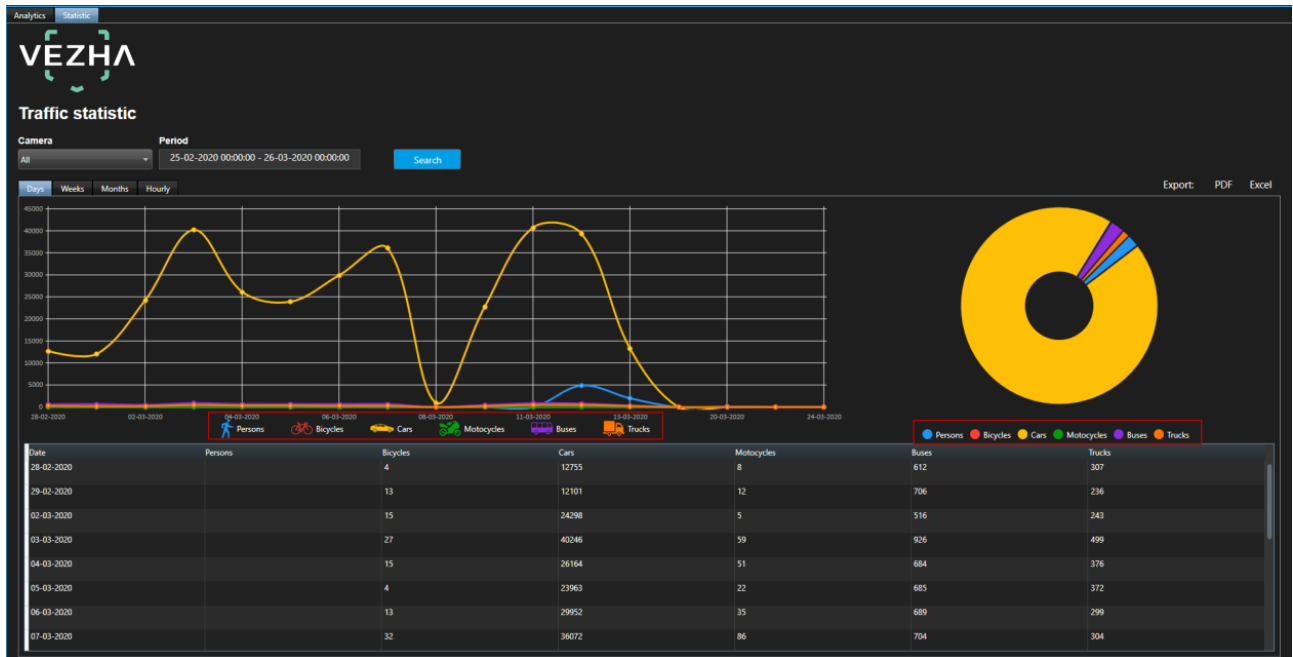
4. To upload reports we use the option to upload a report.



To see statistics by hours, days, weeks, months, select the appropriate tab.



In the Days, Weeks, Months tabs, you can remove unnecessary elements from the chart by clicking on the name of the object under the chart or under the pie chart.



# DIGITAL TRANSFORMATION OF YOUR BUSINESS

**Our Mission is to exceed our customers' expectations  
with innovative solutions in AI video surveillance**

For more information visit: <https://incoresoft.com>