

Milestone Traffix Integration

Introduction to Traffix

Traffix is a Cires Technologies solution that focuses on optimizing vehicle flow in congested areas by reducing wait times, preventing bottlenecks, and improving both traffic efficiency and security by enabling rapid detection of potential threats and streamlining traffic management.

Integration Features

In this plugin, we included a few Traffix features within the Milestone XProtect Smart Client. Here's a list:

- Authenticate to Traffix via the settings panel.
- Display a list of the latest recognized license plates.
- Search and filter.

Requirements

Before using the plugin, the customer needs a few things set up:

- An up-and-running XProtect instance.
- An up-and-running Traffix instance.
- Traffix base URL and an account with the admin role or with enough privileges.

For further information on acquiring Traffix, please contact Mrs. Iman Chaara, head of business development department at Cires Technologies via email i.chaara@cirestechnologies.ma.

Traffix

Traffix is an AI-driven solution designed to optimize vehicle flow in congested areas, reducing wait times, eliminating bottlenecks, and enhancing crossing efficiency and security by swiftly detecting suspicious vehicles. This platform offers key features such as Automatic License Plate Recognition (ALPR), object counting, vehicle detection and identification, speed measurement, alarm and notification management, traffic analysis, parking management, and comprehensive reporting through an intuitive dashboard.

In the following paragraphs, we'll be exploring the traffix features that are relevant to the integration with XProtect.

License plates history

TRAFFIX

Q Search

Dashboard

ANPR

Live View

History

Whitelist

Blacklist

Parking Management

Settings

ANPR

History

Export

CSV

XLS

13 June 2023 14:00 - 14 July 2

Gate number

Plate Number

Plate Number	Nationality	Entry Date	Status	Gate number	Plate Captured	Actions
	MA	2023-07-27 14:48	None	Gate 1		
	ES	2023-07-27 14:48	None	Gate 3		
	ES	2023-07-27 14:48	None	Gate 2		
	FR	2023-07-27 14:48	None	Gate 3		
	ES	2023-07-27 14:48	None	Gate 1		
	BE	2023-07-27 14:48	None	Gate 1		
	MA	2023-07-27 14:48	None	Gate 3		
	ES	2023-07-27 14:48	None	Gate 4		
	ES	2023-07-27 14:48	None	Gate 1		
	FR	2023-07-27 14:48	None	Gate 3		
	ES	2023-07-27 14:48	None	Gate 3		
	BE	2023-07-27 14:48	None	Gate 2		
	FR	2023-07-27 14:48	None	Gate 3		
	ES	2023-07-27 14:48	None	Gate 5		
	BE	2023-07-27 14:48	None	Gate 1		

Rows Per Page 15Page 1 of 10

The **ALPR (Automatic License Plate Recognition) History** feature in Traffix provides a detailed log of detected vehicles, including license plate numbers, nationalities, entry dates, lane info, and captured plate images. This feature enables efficient monitoring, tracking, and management of vehicle movements for enhanced security and traffic control.

Cameras

Paramètres

Paramètres généraux du système.

Utilisateurs

Caméras

Caméras

Créer et gérer des caméras

Ajouter

Voie	Porte N°	Type	
camera32	0	ENTER	
camera33	0	ENTER	
camera34	0	ENTER	
camera35	0	ENTER	
camera36	0	ENTER	
camera38	0	ENTER	
camera9	0	ENTER	
camera8	0	ENTER	

8 of 48 row(s).

Previous

1

Next

6

Nouvelle caméra

Ajoutez une nouvelle caméra à votre liste.

latitude*

0

longitude*

0

URL Streaming*

Description*

Type*

DEFAULT

Antenne RFID*

Sélectionner l'antenne

Gate Name*

couloir marchandise

Sauvegarder

The **Cameras Management** feature in Traffix allows administrators to add, configure, and manage cameras throughout the system. This centralized interface provides a comprehensive overview of camera locations, types, and settings, ensuring effective monitoring and control of entry points and other critical areas for enhanced security and traffic management.

How to use Traffix plugin

Below is a short guide on how the integration works with XProtect.

Installation

The Traffix XProtect plugin is built for the XProtect Smart Client and therefore should be installed in all computers running the XProtect Smart Client.

The installation process is like that of a simple plugin, here are the necessary steps:

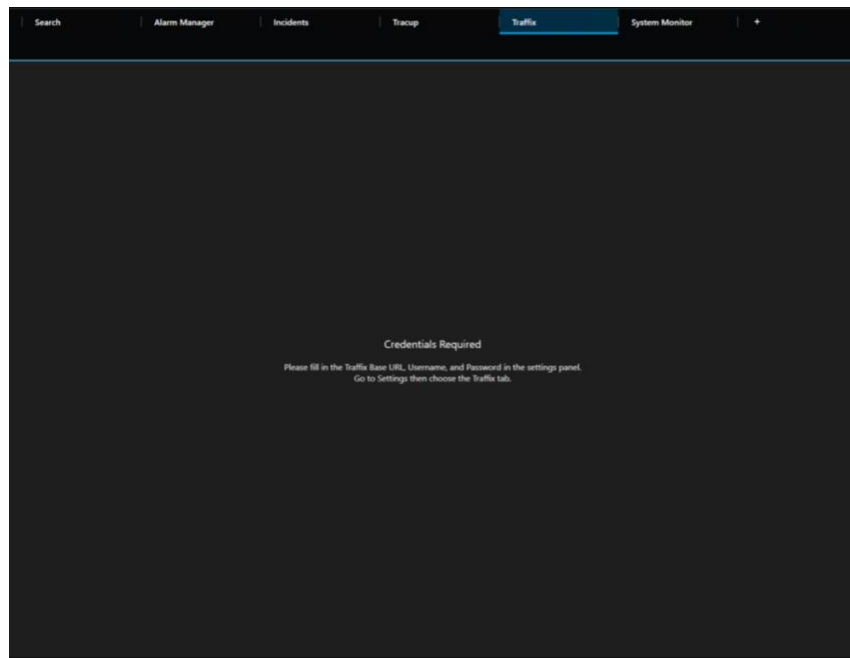
- 1- Stop XProtect services (i.e. Management server, event server, recording server, mobile server) from the windows tray (right-click → stop....)



- 2- Extract the plugin files.
- 3- Navigate to **C:\Program Files\Milestone\MIPPlugins** and create a new folder with the name **TraffixMilestone**.
- 4- Copy the plugin files to the newly created folder.
- 5- Start all XProtect services.

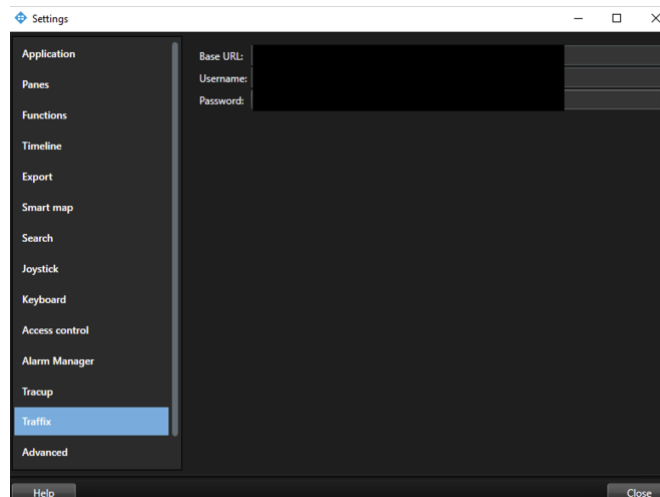
Traffix workspace plugin – not configured

At first, when the user logs in to the XProtect Smart Client and tries to access the Traffix workspace plugin, they are required to include the credentials for the plugin to work properly.



Settings panel

Inside the settings panel → Traffic, the user can fill in the required info as shown in the screenshot below.



Traffic workspace plugin – configured

Once configured, a data table of the latest recognized license plates is displayed, you can search and filter through the recognized license plates by plate number, channel number, and date.

Milestone XProtect Smart Client

New View (...)ExportsSearchAlarm Man...+

Not secure15:12:08

Setup

Latest 50 recognized license plates

Filter by group

Select a date

Select a date

Plate Number	Nationality	Entry Date	Channel Number	Plate Image
	MA	2024-09-11 13:47:15		
	MA	2024-09-11 13:46:23		
	MA	2024-09-11 13:43:05		
	MA	2024-09-11 13:42:09		
	MA	2024-09-11 13:41:13		
	MA	2024-09-11 13:41:06		
	MA	2024-09-11 13:40:57		
	MA	2024-09-11 13:40:49		
	MA	2024-09-11 13:35:24		
	MA	2024-09-11 13:35:11		
	MA	2024-09-11 13:34:52		
	MA	2024-09-11 13:34:37		
	MA	2024-09-11 13:34:13		
	MA	2024-09-11 13:34:03		
	MA	2024-09-11 13:33:56		
	MA	2024-09-11 13:32:28		
	MA	2024-09-11 13:32:23		
	MA	2024-09-11 13:30:58		
	MA	2024-09-11 13:30:53		
	MA	2024-09-11 13:30:25		
	MA	2024-09-11 13:29:55		