

Wasabi is certified for use with [Milestone XProtect Video Management Software](#). The XProtect application does not natively support an S3 object storage interface for connection to a S3-compatible service like Wasabi. In order to use Wasabi with Milestone, you will need to use a component to convert Milestone's file system interfaces to S3 object storage interface. For this function, Wasabi has partnered with [LucidLink](#) to deliver a seamless experience to any Milestone user.

## Requirements

- Milestone XProtect Management 2019 version R2
- LucidLink application and an active subscription
- Wasabi cloud storage account

## Reference Architecture



## Configuration

1. [LucidLink](#)
2. [Milestone XProtect](#)

- **LucidLink Configuration**

To Install LucidLink application - following information available [here](#)

1. Login in to your LucidLink [webportal](#) account

# Sign in

Email



Password

••••••••



[Show](#)

[Forgot password](#)

Sign in

2. Once logged in, click on "Create a new Filespace"



Create a new filespace.

3. If you already have a Wasabi account choose "Bring your own storage", if you don't have a Wasabi storage account, you can sign up for Wasabi storage via LucidLink or directly via [Wasabi](#). If you choose to sign up via LucidLink, click on "Use LucidLink Storage"

Use LucidLink Storage	Bring your own Storage
Data is hosted in partnership with Wasabi Hot Cloud Storage	AWS, Digital Ocean, Exoscale, Google Cloud, Telefonica, Wasabi and more
\$10 per month	\$8 per month
1TB LucidLink storage included 5 connected devices included	Up to 10TB your own storage 5 connected devices included
\$10 per 1TB additional storage (Max. 10TB) \$8 per additional connected device	No additional storage fee (Max. 10TB) \$8 per additional connected device
Select	Select

4. Provide a name for your Filespace and click "Next"

[← Back to the plan](#)

## Choose a filespace name

Choose a name that identifies this namespace within your domain.

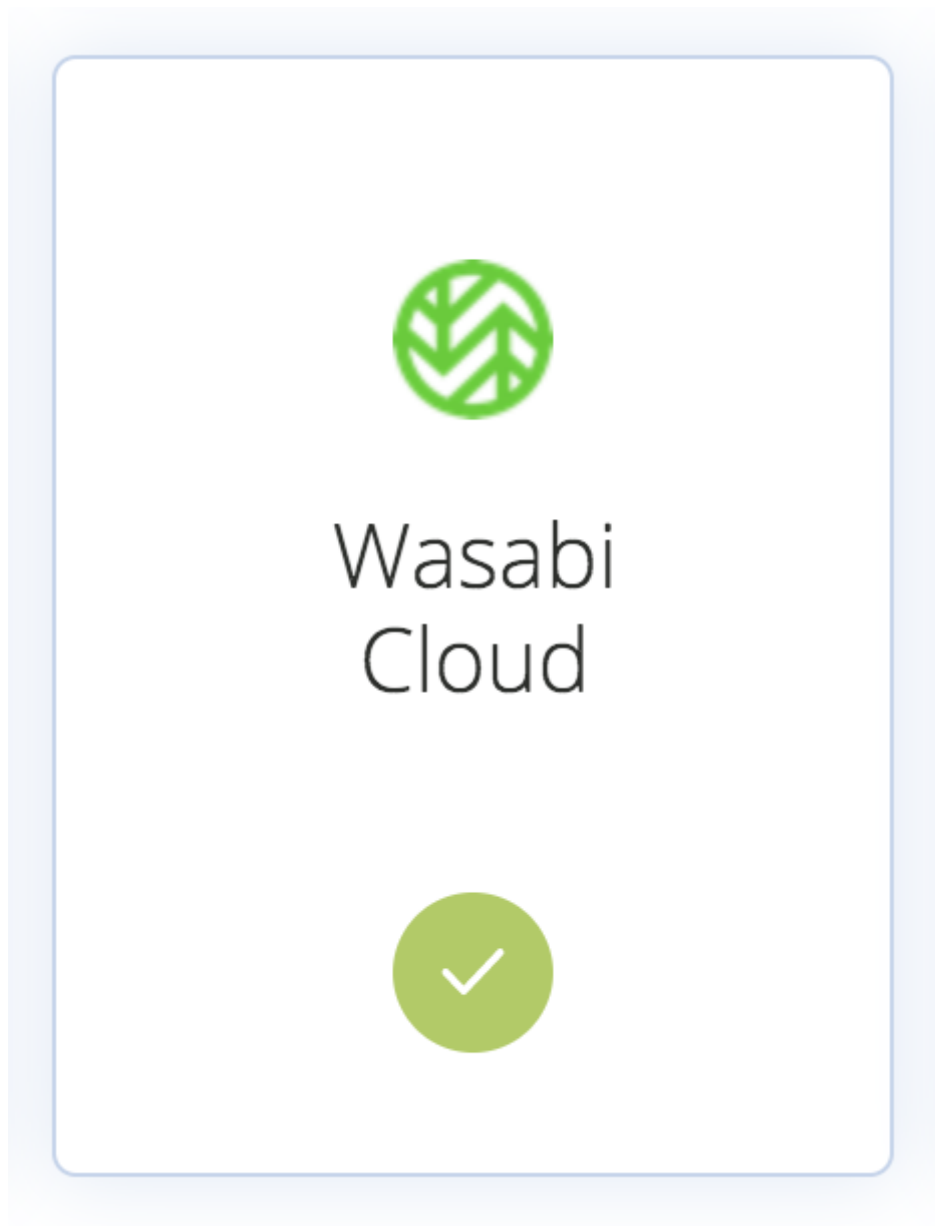
Filespace name

test

- ✓ The filespace name should be unique within your domain
- ✓ Must contain only lowercase letters, numbers or hyphens
- ✓ Must start and end with a lowercase letter or number
- ✓ Must be at least 2 and no more than 48 characters long

Next →

5. Choose Wasabi as your cloud storage provider (Note: in step 3, I chose "Bring your own storage")



6. Choose Wasabi region and click "Next"

*Note that this config example discusses the use of Wasabi's eu-central-1 storage region. To use other Wasabi storage regions, please use the appropriate Wasabi service URL as described in this [article](#)*

[← Back to the provider](#)

Choose cloud storage region

Selecting a region closest to your client devices offers the best performance. Keep in mind that your storage provider pricing may vary by region.

USA

☒ Ashburn, VA

☐ Hillsboro, OR

EUROPE

☐ Amsterdam, NL

☒ I will provide my own bucket name

Next →

7. Review and confirm the configuration choices and click "Create"

8. Once the Filespace has been created, click "Initialize"

Your storage

test

Finished setting up your filespace. One more step...

Provider  
Wasabi (Ashburn, VA)

Initialize

9. In order to Initialize the Filespace, the LucidLink client application needs to be installed and operational, click "Launch the desktop client"

## Filespace initialization

To complete the initialization you need to set up a root password. For maximum security, this step will be performed through your desktop client. If you have not installed it yet, please [download it here](#).

Click the button below to launch the desktop client where you may be prompted to click Allow or OK.

Launch the desktop client

Cancel

10. Once the LucidLink application launches, input your Wasabi S3 keyset

*Note : review following [article](#) to access Access & Secret keys via Wasabi console*

Add your  
cloud credentials

Need help finding your cloud  
credentials?

version 1.18  
Build 1959

test.wasabimilestone

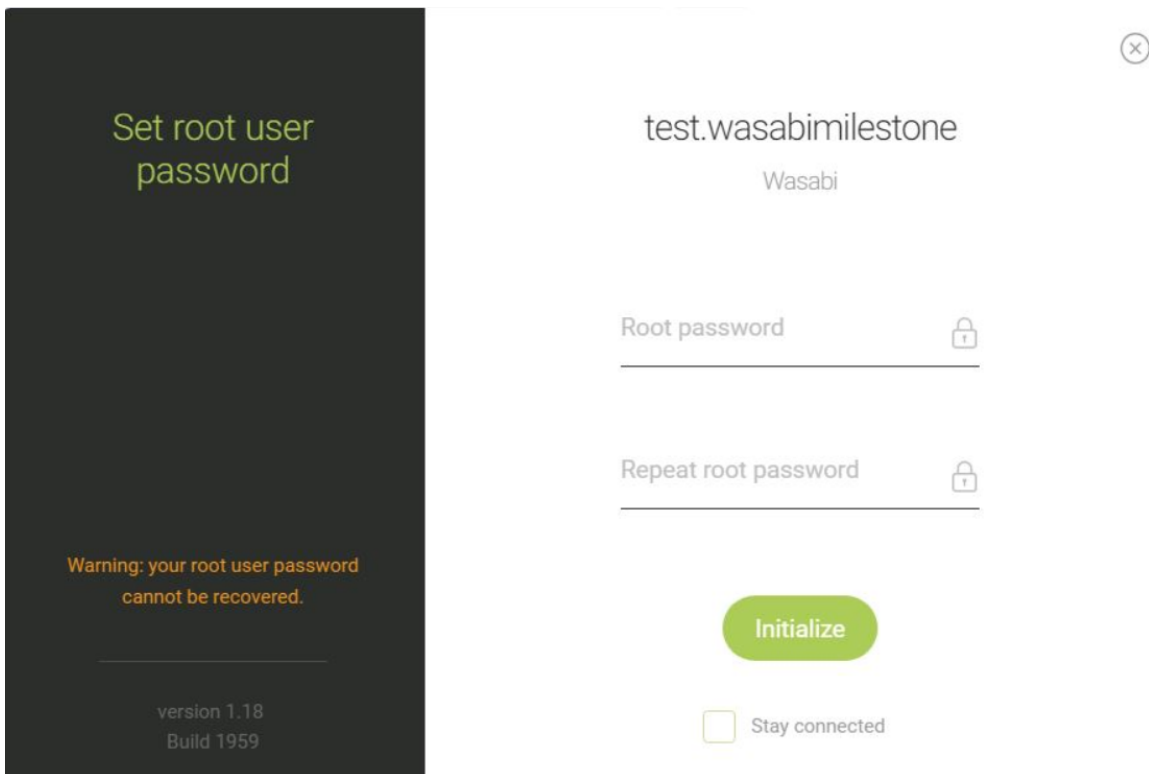
Wasabi

Access key

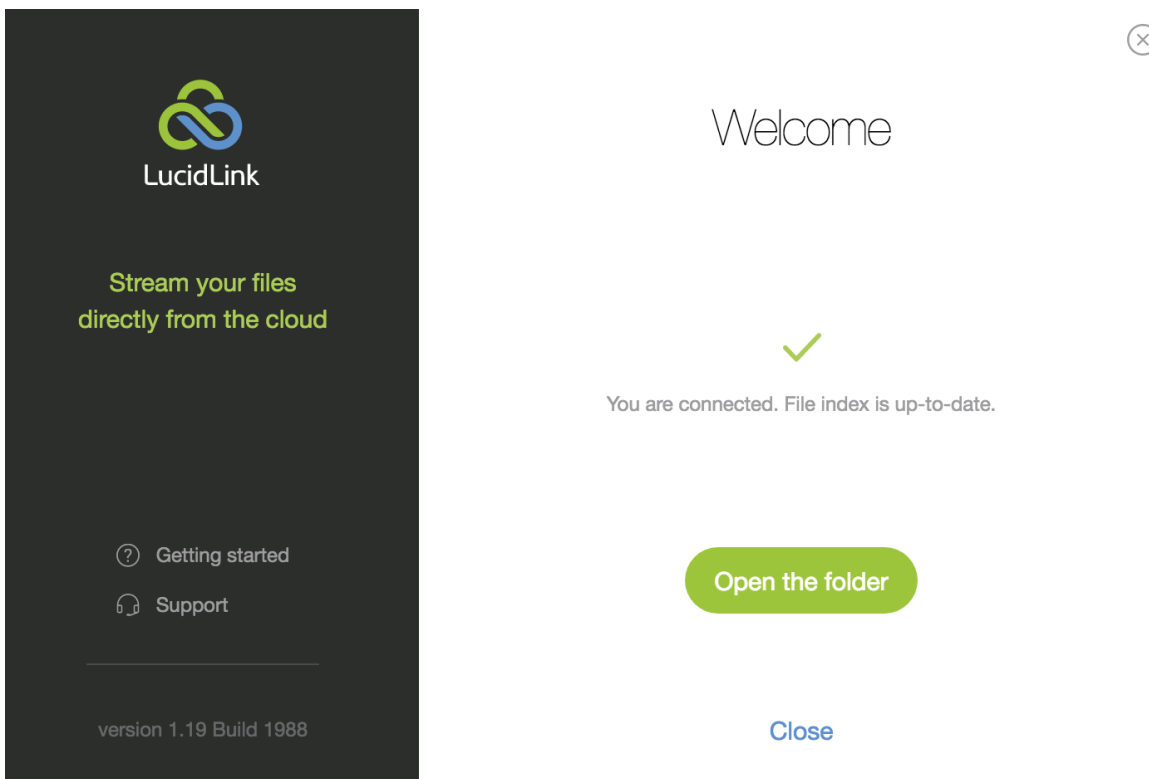
Secret key

Next

11. Once you input the S3 keyset, set LucidLink's root account password and click "Initialize"

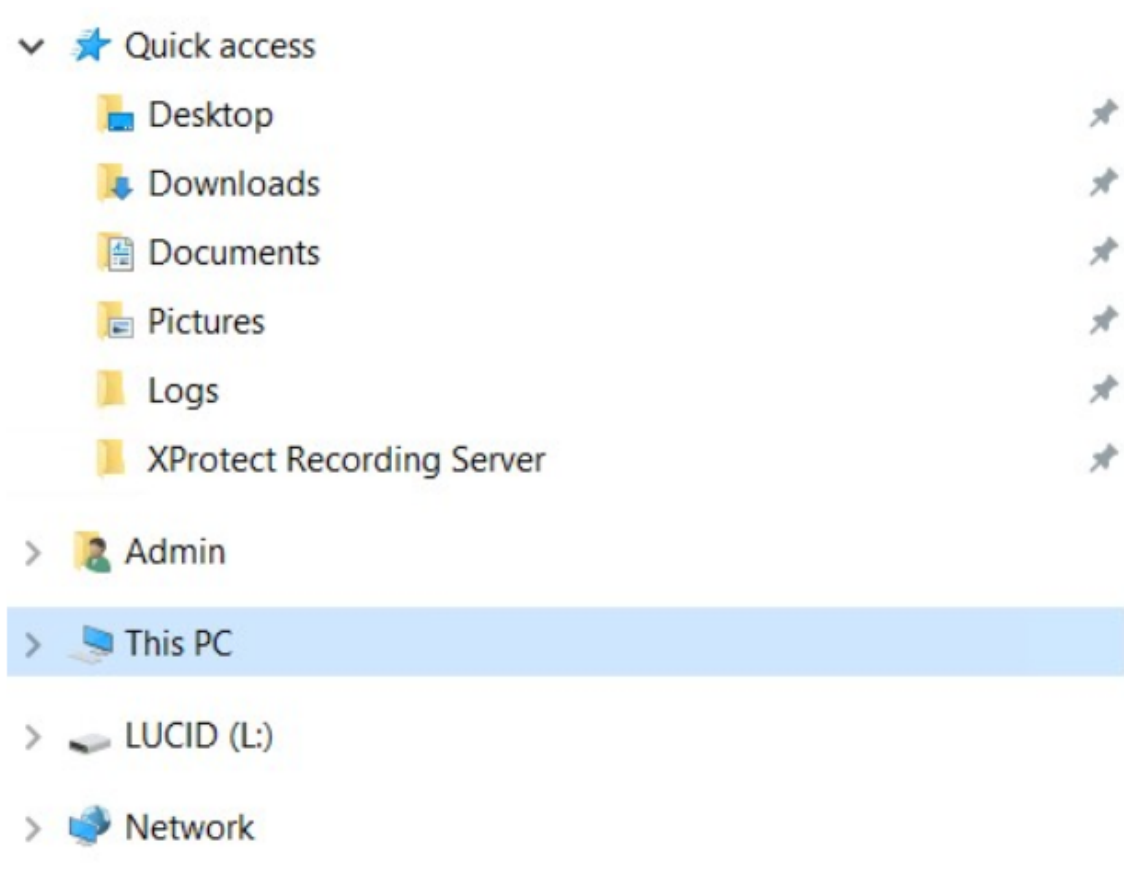


12. Once initialization completes, LucidLink will create a local copy of your filesystem metadata (the file index), whilst the data itself will reside in Wasabi Cloud Storage. Once complete, click "Open the folder", At this point all of the videos to edit and/or alter can be moved or migrated to this folder on your workstation via a drag and drop or other file copy operations.



13. Your LucidLink Filespace namespace will appear as a shared drive on your workstation as shown below.



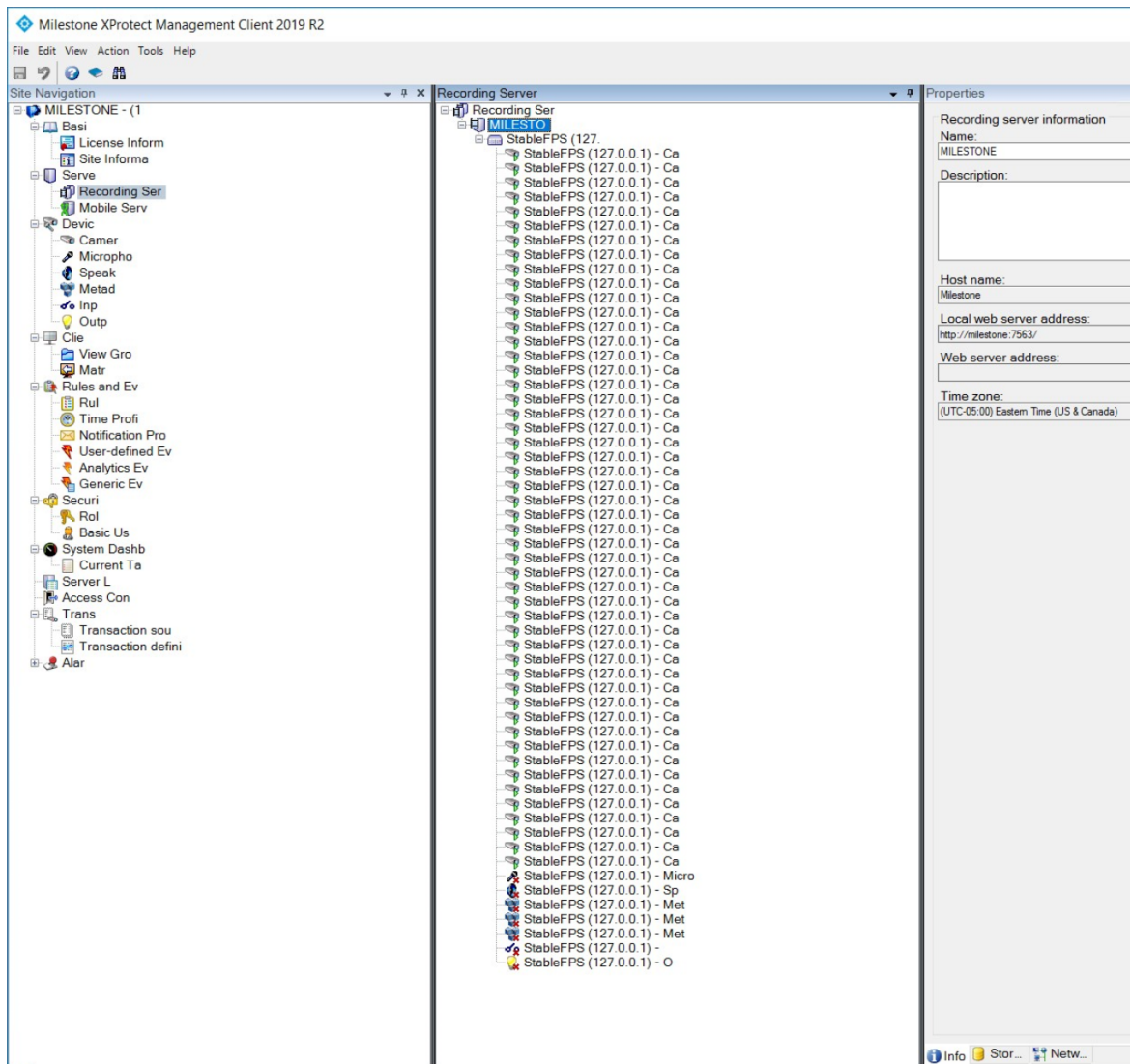


14. The 'test' LucidLink namespace points to Wasabi storage account bucket name "milestonelucidlink". All of the data stored on "test" will physically live on Wasabi cloud storage as objects. These objects aggregate upto all the assets stored on "LUCID (L:)" share.

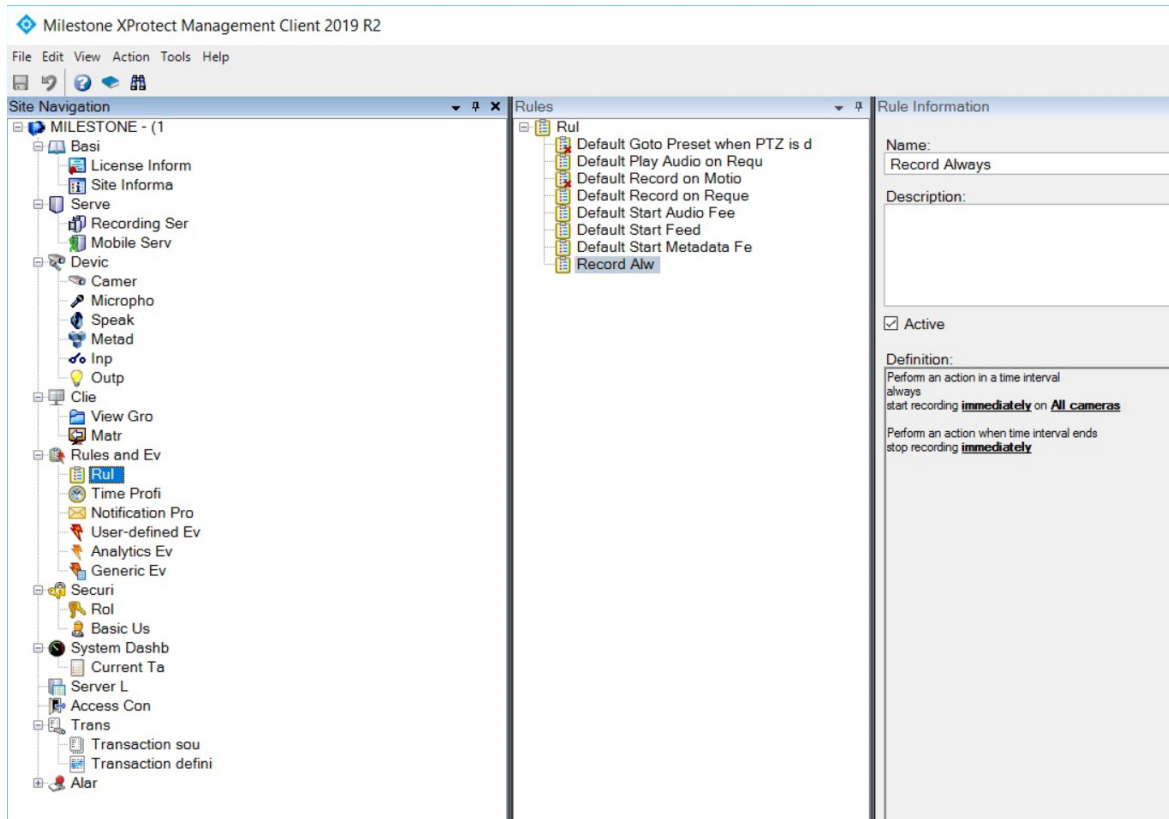
Object Storage				
<div> <span>CREATE FOLDER</span> <span>UPLOAD FILES</span> <span>MORE</span> </div> <div> <span>Search Objects By Prefix</span> </div>				
All Buckets / milestonelucidlink /				
Storage Browser - Objects				
	Name		Last Modified	Size
<input type="checkbox"/>				
<input type="checkbox"/>		000095cd-e801-4b56-aaba-e0469a91ed9b	Sep 10, 2019 6:06 PM	258.5 KB
<input type="checkbox"/>		00015bbf-f0a5-45f3-b8d7-d87d52d5af46	Sep 10, 2019 6:04 PM	257.6 KB
<input type="checkbox"/>		00022763-3197-4747-89a6-8be6316ae3e9	Sep 10, 2019 6:08 PM	257.5 KB
<input type="checkbox"/>		00036f08-a19b-44a8-bc4e-7a773598ba35	Sep 10, 2019 6:03 PM	257.2 KB
<input type="checkbox"/>		00039da2-41e2-4542-a9fd-64dad6afd8a5	Sep 10, 2019 6:26 PM	258.2 KB

#### • Milestone XProtect Management 2019

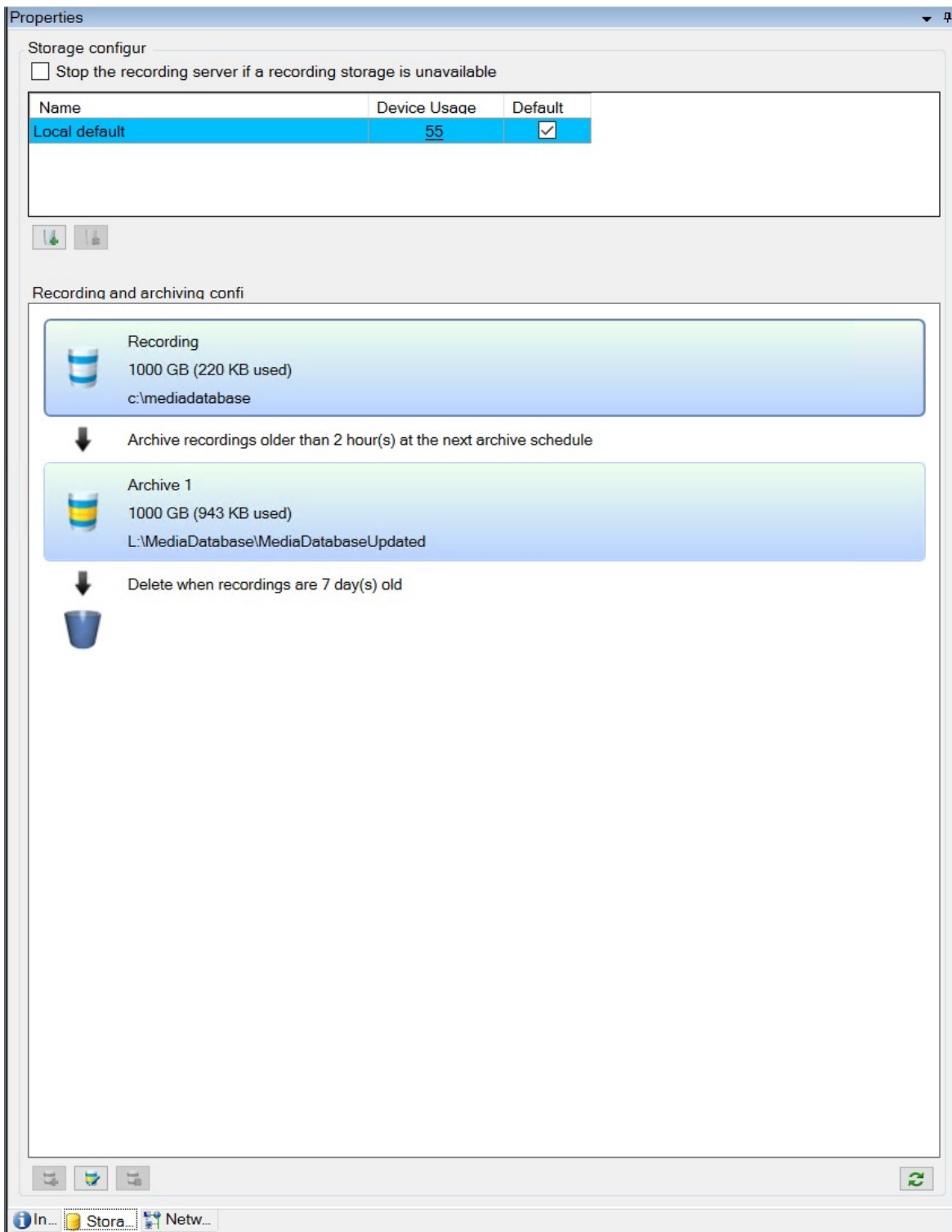
The Milestone XProtect should be installed and configured with the video surveillance cameras that are setup to be 'recording'.



The rules within the Milestone application are configured to “start recording immediately on all cameras”. This triggers the Milestone application to record all the camera output (irrespective of motion sensed) and write it to storage.



In the Storage settings (shown below), the live Recordings are written to a local storage (C:\) for a short duration of 2 hours after which the videos are then archived over to Wasabi's cloud storage via the LucidLink shared drive (L:\).



## Use Cases

### *Retention*

XProtect Corporate manages the transfer from multiple recording server's live databases to Wasabi using LucidLink, as well as the number of days of retention for the archived data. LucidLink copies the archive database using S3 protocol to Wasabi. Wasabi's bucket retention policies can then be enforced to purge the data based on the set retention time.

### *Retrieval and Playback*

LucidLink's distributed file service allows users to view the video within the XProtect Smart Client. LucidLink is a distributed file system that splits the data and the metadata layers allowing simultaneous user access. It streams, prefetches data and offers caching support.