



# VuWall2

---

Video Wall Control Software - 2.10.4

---

## Video Management System Client Plugin

---

Oct 2019

---

[www.vuwall.com](http://www.vuwall.com)

© 2019 VuWall technology, Inc

---

Simplicity in AV networks & video wall management

## Table of Contents

Introduction.....	2
Requirements.....	2
Activating the VMS Client Plugin.....	3
Genetec Security Desk Operation with VuWall2 Plugin.....	4
Milestone XProtect Operation with VuWall2 Plugin .....	5
Manipulating Cameras from the VuWall2 Plugin.....	6
Saving Layouts from the VuWall2 Plugin.....	9
Filtering Sources from the VuWall2 Plugin .....	10

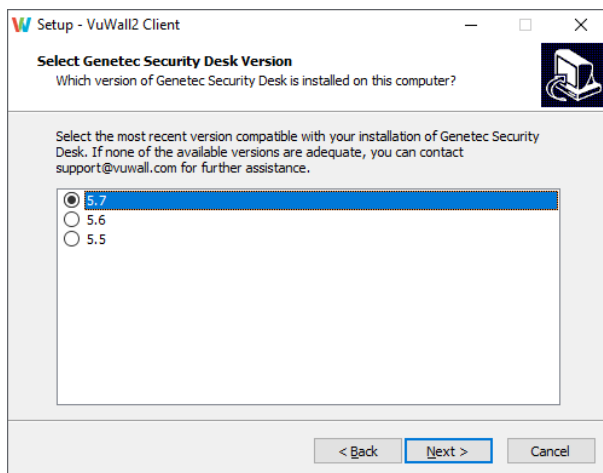
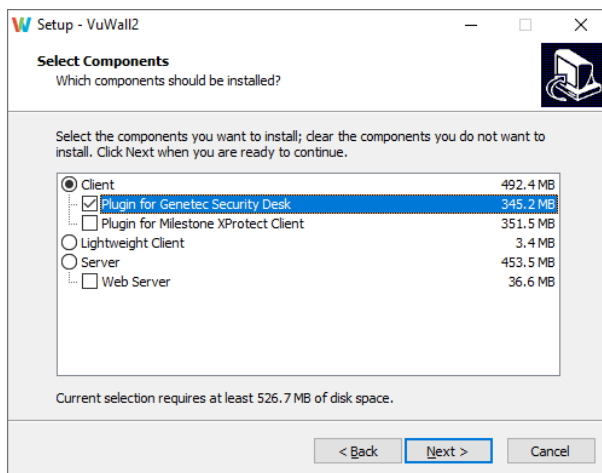
### Introduction

The VuWall2 Plugin for Video Management Systems provides a seamless connection between cameras managed by Genetec Security Center or Milestone XProtect, and other source types managed by VuWall2 Servers. It allows you to open and arrange your VMS cameras as well as input types supported by VuWall2 Server (*Layouts, Inputs, Clients, VNC Sources, Shortcuts, IP Devices, Browsers*) all from within Genetec Security Desk or Milestone XProtect Smart Client, meaning operators do not need multiple applications open to control their video wall, and have less interfaces to learn thereby improving operator efficiency and reducing training required.

### Requirements

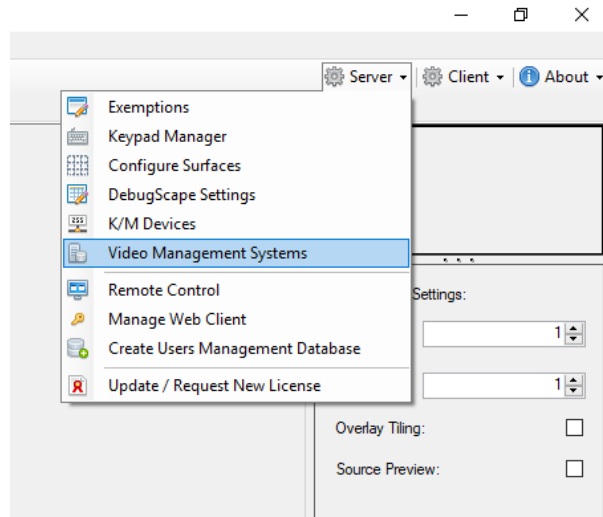
- A Genetec Security Center Server version 5.5 or above
  - Activated with part no. GSC-1SDK-VuWall-VuWall2
- A Milestone XProtect Server 2018 or later
- Video Wall Controller running
  - VuWall2 Server 2.10.1 Pro with VMS feature
  - VLC Media Player, Matrox IPX or Datapath SQX decoding hardware
- One PC running
  - Genetec Security Desk 5.5 or above
  - Milestone XProtect Smart Client 2018 or later
  - VuWall2 Client 2.10.1 or above

During installation of the VuWall2 Client, select which VMS platform is currently installed to include the video wall management plugin. For Genetec, you will also have to indicate the version of Security Desk you have installed

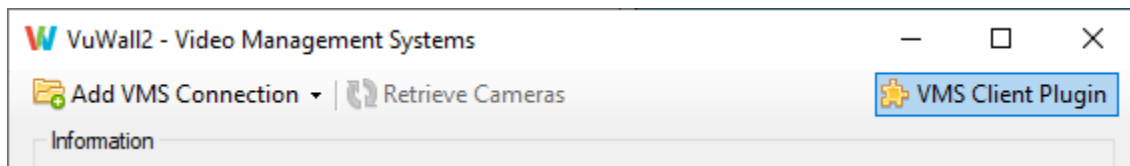


### Activating the VMS Client Plugin

Using the VuWall2 Client, connect to your server, then click on the Server **“Gear”** icon and select **“Video Management Systems”** as below.



A window entitled **“VuWall2 – Video Management Systems”** will appear, make sure **“VMS Client Plugin”** button is highlighted (Enabled), if not a simple click will do.



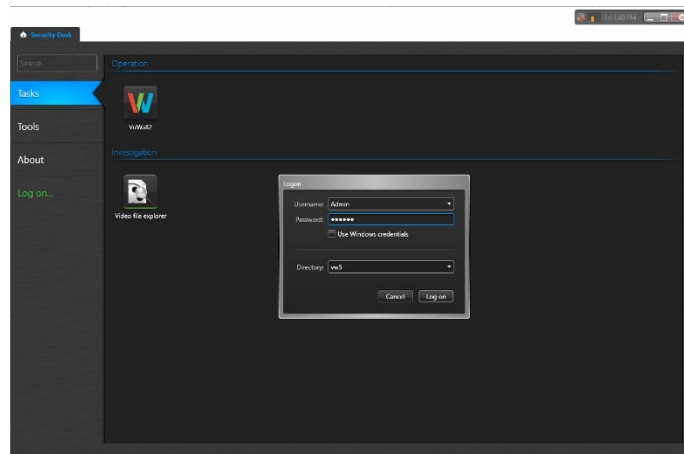
Following the instructions from the document **“Video Management Systems Integration”**, you can now add the connection details for the VMS Server. Alternatively, you can start using the plugin from the VMS Client software, which will register the basic connection information automatically. You will have to come back to this form to validate or fill in missing details, otherwise camera sources may not appear on the video wall.

You can now close the VuWall2 client. The following steps are set on the operator workstation and in the VMS client software.

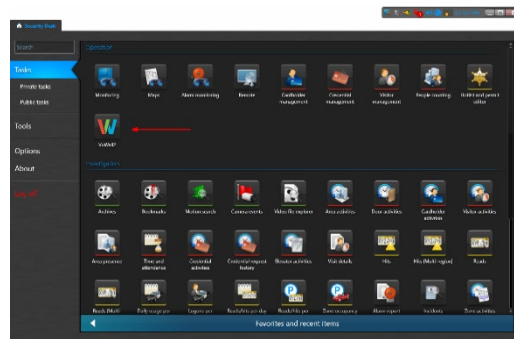
### Genetec Security Desk Operation with VuWall2 Plugin

Launch Genetec Security Desk, the Desktop Client. A **“Logon”** Window is showing, type in your Genetec user credentials. The plugin is installed into this client instance and is available to every authenticated user.

**“Directory”** corresponds to the name of your Genetec Server.



Once started, a **VuWall icon** appears in Genetec Security Desk, in the **“Tasks”** section. Double click on it to see the **“Server Connection”** popup window.



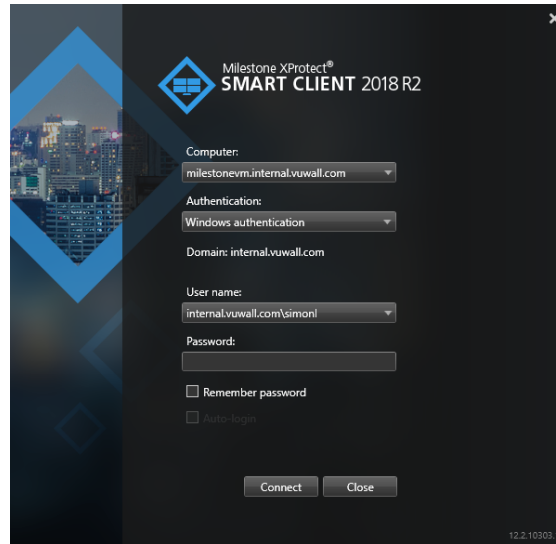
Click on the **VuWall icon**, and the server connection popup appears.



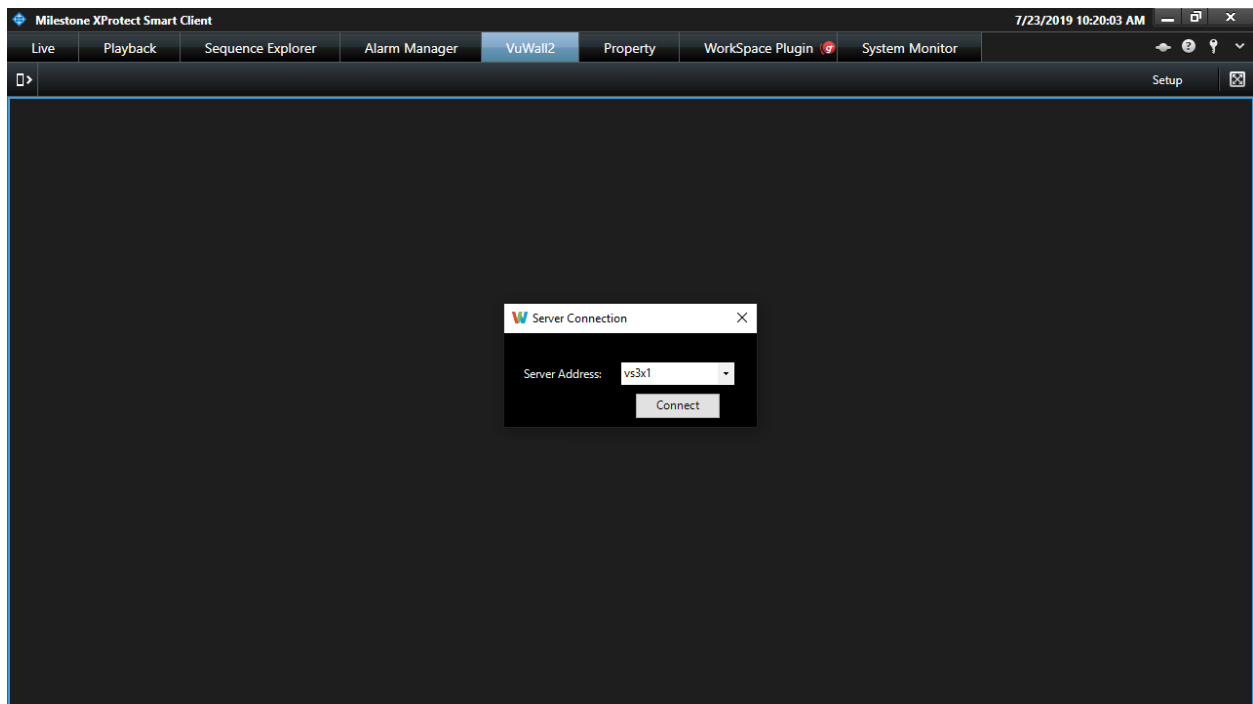
Enter the host name or IP address of the video wall controller, then click on **“Connect”**.

### Milestone XProtect Operation with VuWall2 Plugin

Launch Milestone XProtect Smart Client, the Desktop Client A **“Logon”** Window is showing, type in your Milestone user credentials. The plugin is installed into this client instance and is available to every authenticated user.

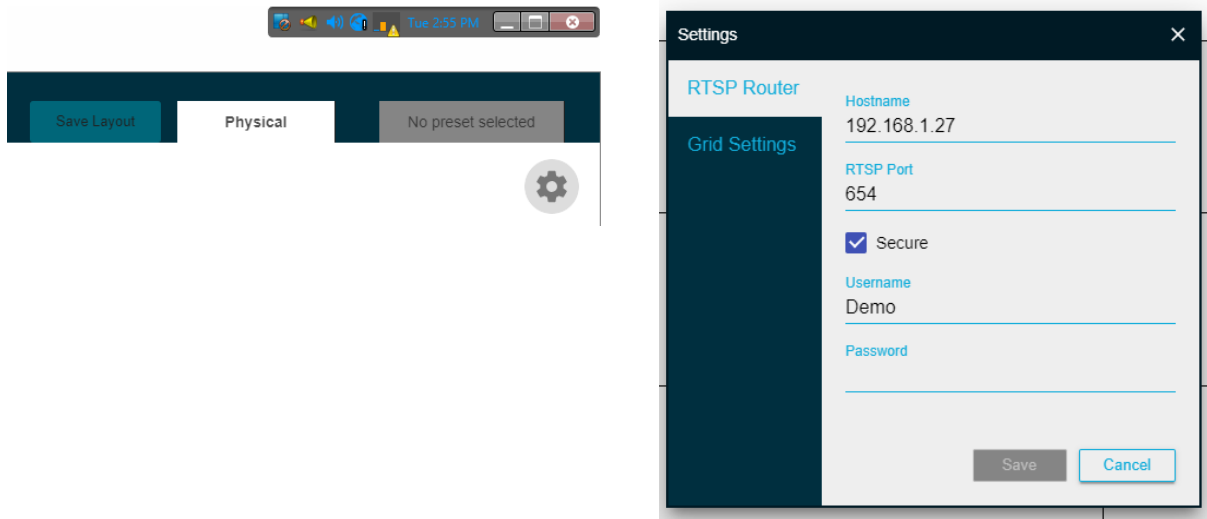


Once started, a VuWall2 section is available in the navigation bar. Click on the **“VuWall2”** header and the **“Server Connection”** popup appears. Enter the host name or IP address of the video wall controller, then click on **“Connect”**.

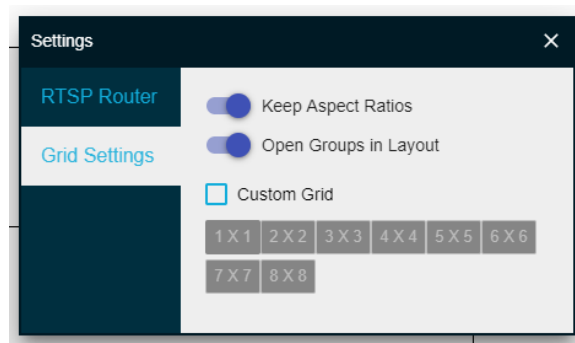


### Manipulating Cameras from the VuWall2 Plugin

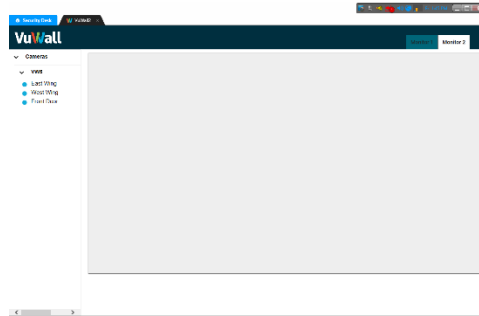
Before you can display cameras onto the video wall, you must enter the RTSP streaming details of the VMS Server. Click on the **"Gear"** icon in the top right corner of the user interface to bring up the **"RTSP Router"** section of the **"Settings"** form. Some fields will already have been filled out based on the current client connection and known VMS default values. To validate this information and enter any missing details, refer to the instructions relevant to your VMS in the document **"Video Management Systems Integration"**.



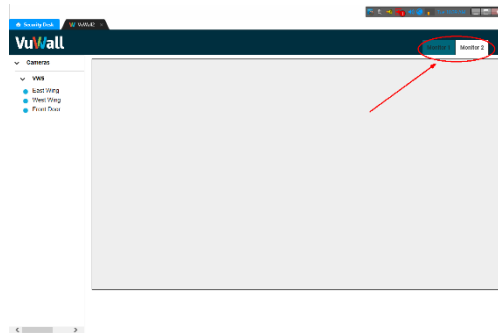
If you select the **"Grid Settings"** section of the **"Settings"** form, you can find a few options to customize your interactions with the VMS plugin user interface.



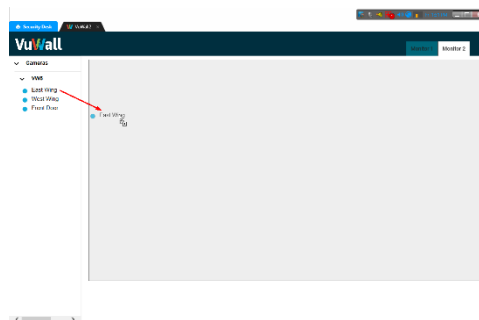
The plugin adds a new tab entitled **"VuWall2"** and displays previously configured connections and their attached cameras.



To display a camera on a wall, first click the tab corresponding to the proper Video Wall.

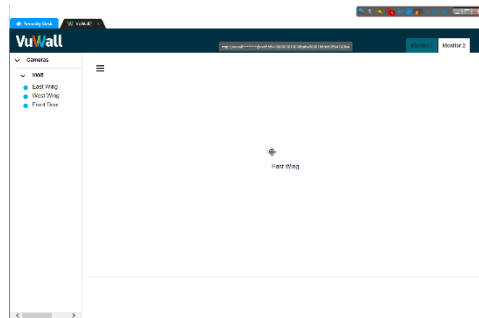


Then simply drag and drop the camera.

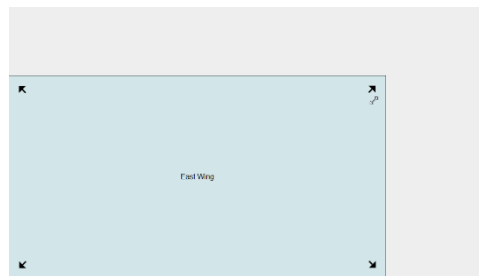




By default, it occupies the whole wall.



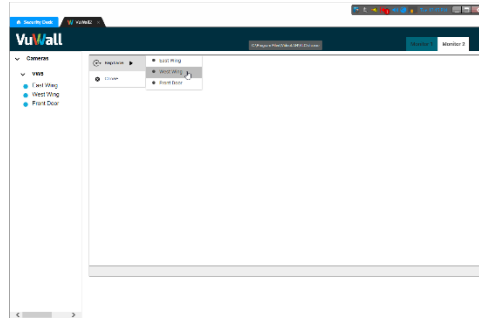
The dimension of the rendered image is set by a click and hold on a corner arrow, then a drag toward the centre and release mouse button when it reaches the intended size.



To move a camera within a wall, direct your mouse cursor in the middle of the window, its shape changes to a "Four arrows" symbol. Click, hold, and move the window where you want.



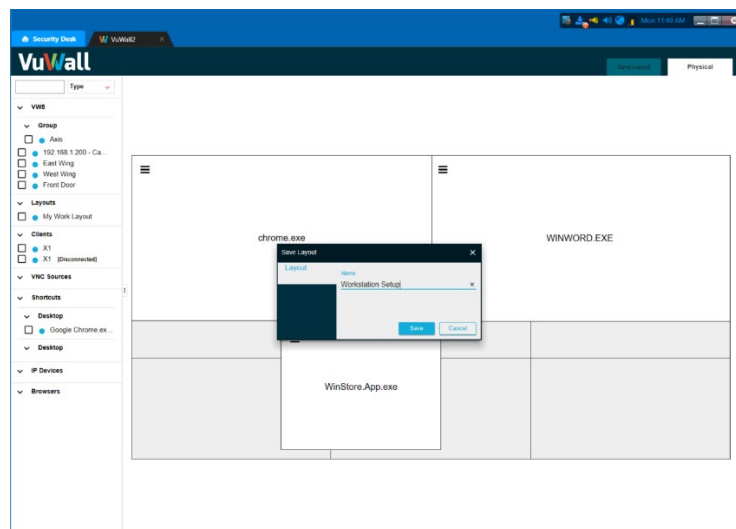
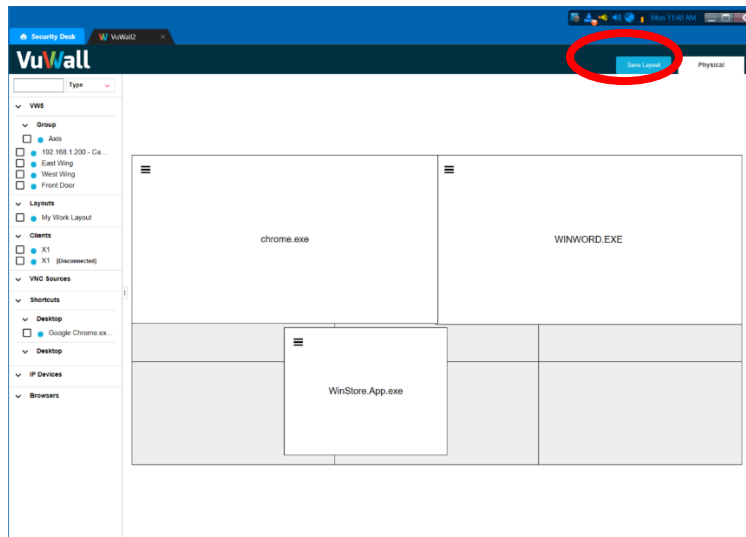
Optionally, click the 3 horizontal lines icon on the top left corner of a window to switch cameras and retain the same size and position.



Clicking on **“Close”** terminates the rendering of that camera on the wall.

## Saving Layouts from the VuWall2 Plugin

Once you are pleased with the configuration of your wall, click the **“Save Layout”** button in the top-right corner to be prompted to enter a name for the Layout. The saved layout will appear in the list of Layouts on the left-hand side and can be drag and dropped to recall the state of the wall when that layout was saved.



## Filtering Sources from the VuWall2 Plugin

As VMS installations can sometimes comprise many thousands of cameras, it is possible to filter/search the list of sources in the VuWall2 Plugin by name and type.

*Note: At this time Security Desk does not expose the IP Address of its cameras, so if you would like to be able to search for a camera by its IP, you must include that IP in the name of the camera itself.*

